



WR-90 Flexible Waveguide Twist With a CPR-90G Flange Operating From 8.2 GHz to 12.4 GHz

Waveguide Twists Technical Data Sheet

PE-W90TF006-24

**Features**

- Twenty four inch long WR-90 waveguide
- Twistable
- Flexes in both the E and H plane
- Neoprene sleeve allows pressurization
- 8.2 GHz to 12.4 GHz Frequency Range
- Brass flanges with a silver plating

**Applications**

- Simplifies positioning of reflectors for line microwave radio links.
- Eliminates installation problems caused by misalignment.
- Test Benches
- Allows expansion/contraction due to thermal issues.
- Pressurized waveguide systems
- Provides vibration isolation
- Microwave Radio

**Description**

The PE - W90TF006 - 24 is part of Pasternack's family of flexible waveguide. The waveguide body is made of a helically wound silver coated brass strip. It can be twisted and/or bent in both the E and H planes without impairing VSWR or attenuation. The waveguide is covered by a neoprene jacket which protects the waveguide, provides mechanical support and allows the waveguide to be pressurized.

Electrical Specifications

Description	Minimum	Typical	Maximum	Units
Frequency Range	8.2		12.4	GHz
VSWR		1.07:1		
Insertion Loss		0.3		dB

Mechanical Specifications

Waveguide Size	WR-90
Waveguide Design	Twistable
Section Length	24 in [609.6 mm]
E - Plane Minimum Bend Radius	205 in [5180 mm]
E - Plane Minimum Bend Radius, 10°	100 in [2540 mm]
H - Plane Minimum Bend Radius, 50°	110 in [2794 mm]
H - Plane Minimum Bend Radius, 20°	100 in [2540 mm]
Maximum Offset Rotation, One Foot	9.7 degrees/ft
Maximum Offset Rotation, Repeat	2.4 degrees/ft
Maximum Operating Pressure	45 psig

Click the following link (or enter part number in "SEARCH" on website) to obtain additional part information including price, inventory and lead time: [WR-90 Flexible Waveguide Twist With a CPR-90G Flange Operating From 8.2 GHz to 12.4 GHz PE-W90TF006-24](#)

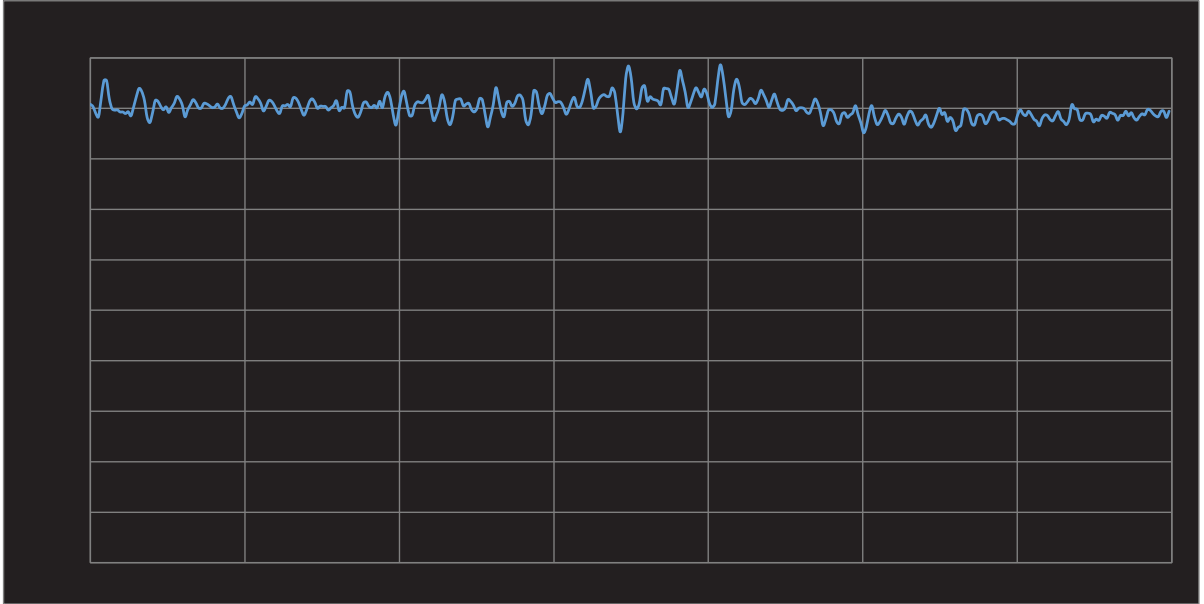




WR-90 Flexible Waveguide Twist With a CPR-90G  
Flange Operating From 8.2 GHz to 12.4 GHz

Waveguide Twists Technical Data Sheet

PE-W90TF006-24



WR-90 Flexible Waveguide Twist With a CPR-90G Flange Operating From 8.2 GHz to 12.4 GHz. Pasternack Enterprises has same day shipment for this product and we maintain a 99% availability and are part of the broadest selection in the industry.

Click the following link (or enter part number in "SEARCH" inventory and <http://www.pasternack.com/wr-90-flexible-waveguide-twist-pe-w90tf006-24>)

URL: <http://www.pasternack.com/wr-90-flexible-waveguide-twist-pe-w90tf006-24>

The information contained in this document is accurate to the best of our knowledge and representative of the part described herein. It may be necessary to make modifications to the part and/or the documentation of the part, in order to implement improvements. Pasternack reserves the right to make such changes as required. Unless otherwise stated, all specifications are nominal. Pasternack does not make any representation or warranty regarding the suitability of the part described herein for any particular purpose, and Pasternack does not assume any liability arising out of the use of any part or documentation.

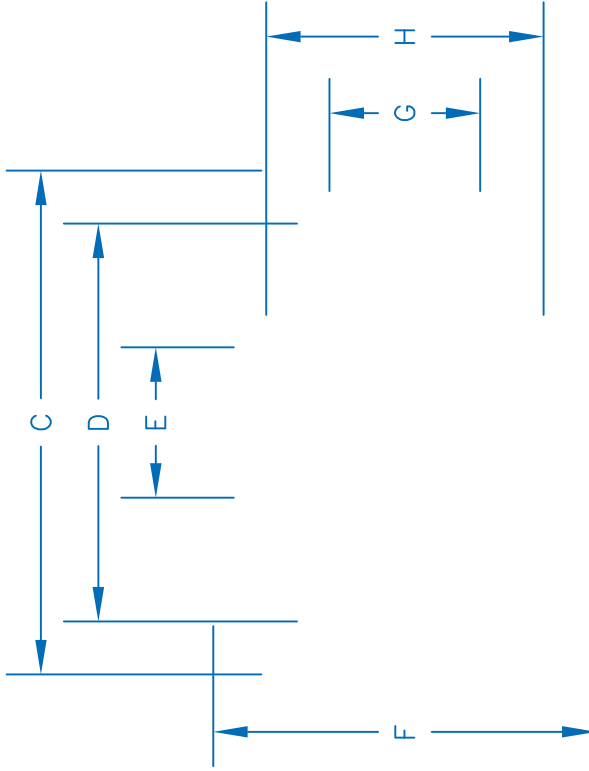
# PE-W90TF006-24 CAD Drawing

WR-90 Flexible Waveguide Twist With a CPR-90G Flange  
Operating From 8.2 GHz to 12.4 GHz



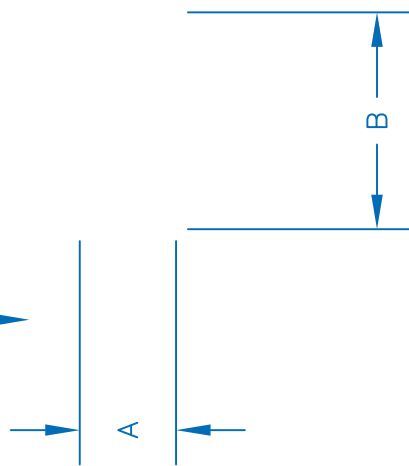
PASTERNAK  
PE-W90TF006-24

CPR 90G	Dimension	Inches	mm
A		0.400	10.16
B		0.900	22.86
C		2.092	53.14
D		1.652	41.96
E		0.624	15.85
F		1.592	40.44
G		0.626	15.90
H		1.152	29.26



0.170 $\phi$   
[4.3] THRU  
(8 HOLES)

CPR 90G  
FLANGE



NOTES:  
1. UNLESS OTHERWISE SPECIFIED ALL DIMENSIONS ARE NOMINAL.  
2. ALL SPECIFICATIONS ARE SUBJECT TO CHANGE WITHOUT NOTICE AT ANY TIME.  
3. DIMENSIONS ARE IN INCHES [mm].

DWG TITLE  
**PE-W90TF006-24**

FSCM NO. 53919

CAD FILE 100115

SCALE N/A

SIZE A

2233

**PE PASTERNAK**  
THE ENGINEER'S RF SOURCE

Pasternack Enterprises, Inc.  
P.O. Box 16759 | Irvine | CA | 92623

Phone: (949) 261-1920 | Fax: (949) 261-7451  
Website: www.pasternack.com | E-Mail: sales@pasternack.com