

## General Description

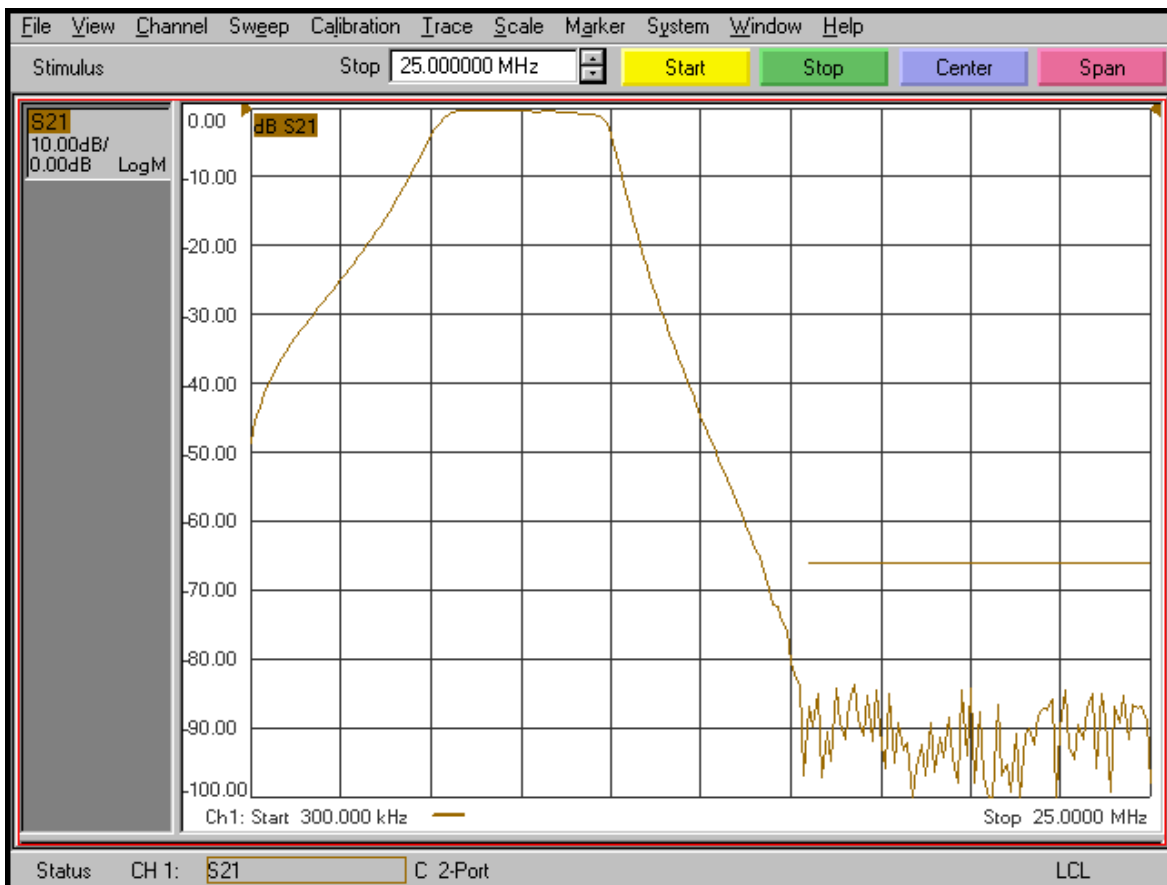
KR Electronics part number 2710-7.8M-SMA is a 7.8 MHz bandpass filter. The filter has a minimum 3 dB bandwidth of 4 MHz and 65 dB at 15.6 MHz. Other center frequencies and bandwidths are available. Please consult the factory.

### Features

- 7.8 MHz Bandpass Filter
- 4 MHz min 3 dB Bandwidth
- 50  $\Omega$  Source and Load
- SMA Connectors
- Also available as surface mount

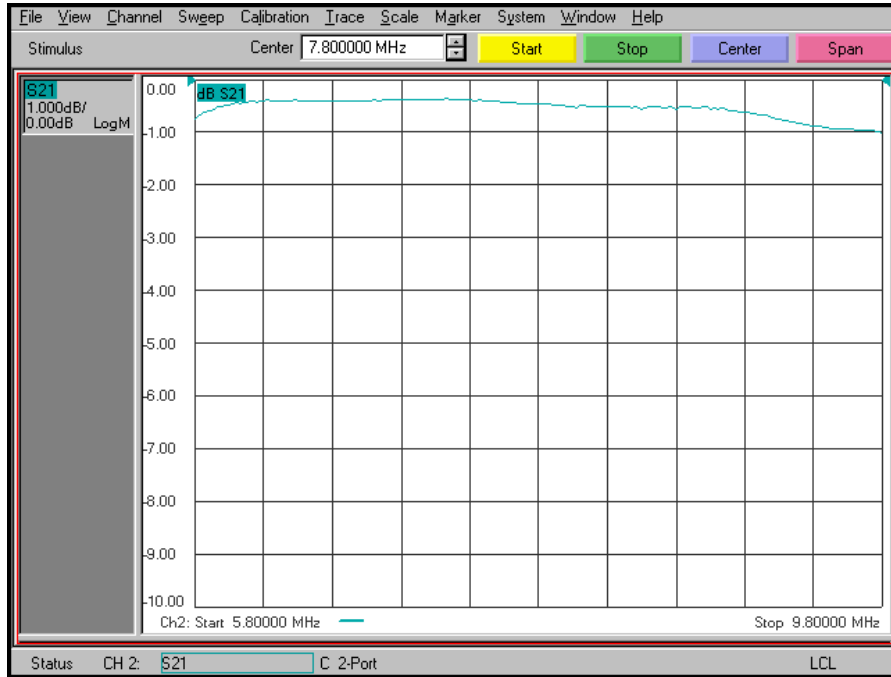
## Typical Performance

**Overall Response**  
(10 dB/div)

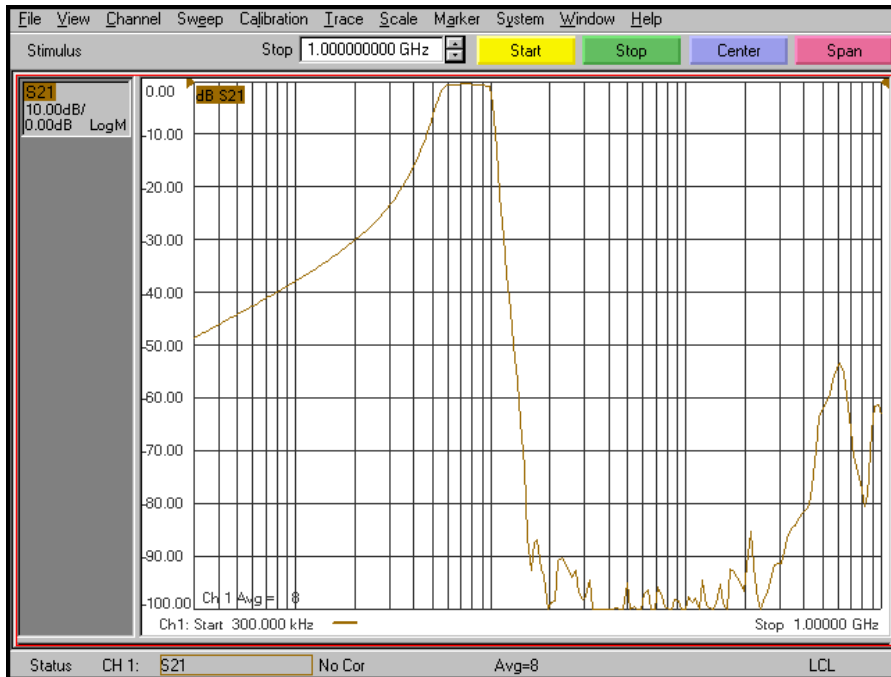


# KR Electronics 2710-7.8M-SMA

## Passband Amplitude (1 dB/div)



## Overall Response (10 dB/div)



KR Electronics, Inc.  
91 Avenel Street  
Avenel, NJ 07001

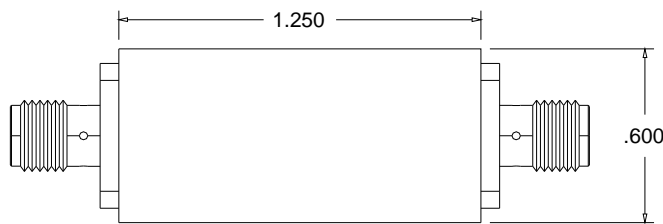
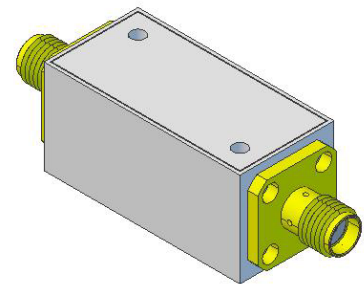
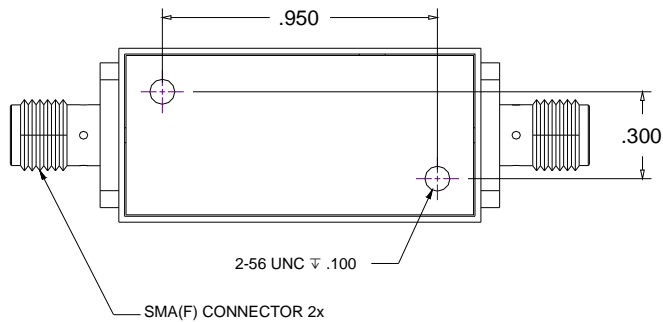
Web [www.krfilters.com](http://www.krfilters.com)  
Email [sales@krfilters.com](mailto:sales@krfilters.com)  
Phone (732) 636-1900  
Fax (732) 636-1982

# KR Electronics 2710-7.8M-SMA

## Specifications

| Parameter                  | Specification              |
|----------------------------|----------------------------|
| Filter type                | Bandpass                   |
| Center Frequency           | 7.8 MHz                    |
| Insertion Loss             | 2 dB max<br>< 1 dB typical |
| 3 dB Bandwidth             | 4 MHz min                  |
| Rejection at 15.6 MHz & up | 65 dB min                  |
| Source and Load            | 50 Ω                       |

## Physical Dimensions



### Notes:

1. Dimensions in inches
2. Metal Case
3. SMA(F) Connectors
4. Also available in surface mount package

KR Electronics, Inc.  
91 Avenel Street  
Avenel, NJ 07001

Web [www.krfilters.com](http://www.krfilters.com)  
Email [sales@krfilters.com](mailto:sales@krfilters.com)  
Phone (732) 636-1900  
Fax (732) 636-1982