



XTV series

XTV 12800 12V 80AH

Valve Regulated Lead Acid Battery

Maintenance-Free Sealed Lead Acid Battery.

Absorbent Glass Mat (AGM) technology for efficient gas recombination of up to 99%.

Design for Standby Power Applications at Extreme Temperatures

【Design Life】

Up to 12 Years in Standby Service at 25°C
Eurobat (20°C) : 10-12 years, Long Life

【Operating Temperature Range】

Nominal Operating Temperature : 25°C (77°F)
Discharge : -20°C ~ 50°C (-4°F~122°F)
Charge: -20°C ~ 50°C (-4°F~122°F)
Storage: -15°C ~ 40°C (5°F~104°F)

【Float Charging Voltage】

13.5 ~ 13.8 VDC/Unit at 25°C (77°F)

【Equalization Charging Voltage】

14.4 ~ 15.0 VDC/Unit at 25°C (77°F)

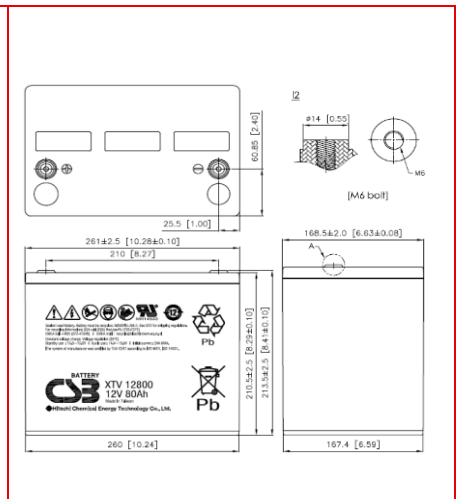
【Self Discharge】

Less than 10% after 90 days, can be stored up to 6 months at 25°C (77°F); Fully recharging is required before usage, and charged sooner if stored at higher temperature than 25°C (77°F).

Specification

Design according with IEC 60896-21/22:2004

Nominal Voltage	12V (6 cells per unit)		
Nominal Capacity	80 Ah @20hr-rate to 1.75V per cell @25°C (77°F)		
Weight	Approx. 25.50 Kg (56.20 lbs)		
Maximum Discharge Current	800A (5sec)		
Internal Resistance	Approx. 4.70 mΩ		
Short Circuit Current	1484A		
Maximum Charge Current	24A		
Terminal types	I2 thread lead alloy terminal to accept M6 bolt		
Terminal hardware Torque	138.6 Kgf-cm / 120.3 Lbf-in / 13.58 N-m		
Container Material	PP (UL 94-HB) & Flame Retardant (94-V0) available upon request		
Dimensions	Length (L)	261.0±2.5 mm	10.28±0.10 inch
	Width (W)	168.5±2.0 mm	5.45±0.06 inch
	Container Height (h)	210.5±2.5 mm	8.29±0.10 inch
	Overall Height (H)	213.5±2.5 mm	8.41±0.10 inch



Constant Current Discharge Characteristics Unit: A (25°C, 77°F)

F.V/Time	5 MIN	10MIN	15MIN	30MIN	60MIN	90MIN	2HR	3HR	5HR	8HR	10HR	20HR
1.60V	303	204	155	92.7	54.7	40.1	31.6	22.1	14.3	9.49	7.82	4.13
1.67V	269	192	151	91.4	54.2	39.8	31.3	22.0	14.2	9.42	7.75	4.11
1.70V	255	185	148	90.8	53.8	39.5	31.1	21.9	14.1	9.38	7.73	4.08
1.75V	229	172	142	88.1	53.0	38.9	30.6	21.6	13.9	9.27	7.65	4.00
1.80V	202	157	128	83.5	51.3	38.0	29.9	21.2	13.6	9.12	7.53	3.96
1.85V	151	138	112	77.7	48.3	36.2	28.5	20.1	13.0	8.72	7.23	3.81

Constant Power Discharge Characteristics Unit: W (25°C, 77°F)

F.V/Time	5 MIN	10MIN	15MIN	30MIN	60MIN	90MIN	2HR	3HR	5HR	8HR	10HR	20HR
1.60V	2925	2114	1660	1033	627	464	367	262	170	112	92.7	49.3
1.67V	2742	2023	1618	1026	625	462	366	260	169	111	92.6	49.2
1.70V	2649	1977	1596	1014	621	459	363	258	168	110	92.5	49.0
1.75V	2438	1867	1517	996	614	454	361	256	167	109	91.8	48.5
1.80V	2143	1746	1397	951	594	444	352	251	165	108	89.8	47.8
1.85V	1775	1507	1242	898	560	424	335	242	158	106	86.9	45.9

Please refer to the official site for the latest rating confirmation. URL: www.csb-battery.com

Issued: 161101

Sales Offices

日立化成能源科技股份有限公司
Hitachi Chemical Energy Technology Co., Ltd.

BUSINESS HEADQUARTERS

Tel: +886-2-2880-5600
Fax: +866-2-2888-3300

USA OFFICE

Tel: +1-817-244-7777 / 1-(800)3-CSB-USA (272872)
Fax: +1-817-244-4445

SHENZHEN OFFICE (CHINA)

Tel: +86-755-8831-6488, 8831-6775
Fax: +86-755-8831-6075

EUROPE (EMEA) OFFICE

Tel: +31(0)180-418-140
Fax: +31(0)180-418-327

SHANGHAI OFFICE (CHINA)

Tel: +86-21-5046-1622, 5046-0833
Fax: +86-21-5046-1046

TAIPEI OFFICE

Tel: +886-2-2880-5600
Fax: +866-2-2888-3300

BEIJING OFFICE (CHINA)

Tel: +86-10-5820-5336, 5820-5338
Fax: +86-10-5820-3053

Recognized under UL 1989,
and certified by ISO 9001, 14001.

