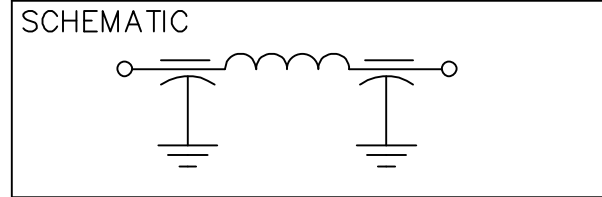


CAPACITANCE	.05uF GMV
TEMP. RANGE	-40°C TO 125°C
CURRENT	10 AMP MAX.
WORKING VOLTAGE	85°C 100 VDC 125°C 70 VDC
IL=PER MIL-STD-220, @25°C N/L 60db @ 10MHz	
I.L. PER MIL-STD-220	
FREQ. MHz	I.L. (db)
1	15
10	60
100	75
1 GHz	75
10 GHz	75



MARKING:
 PART: S 1216-001
 BAG: 1216-001
 DATE CODE
 LOT #
 QTY./BAG (100 MAX.)

- NOTE:
 1. SUGGESTED MTG. HOLE ø.221
 2. HARDWARE IS INCLUDED

	10	9	8	7	6	5	4	3	2	1	0	REV. NO.	TOLERANCES UNLESS OTHERWISE SPECIFIED
	CN 201643	CN 201433	CN 192782	CN 184996	CN 155235	CN 149664	CN 148888	CN 148903	CN 148210	CN 146693	CN 146192	CHANGE NOTICE	Fractions ± 1/64
	REDRAWN			UPDATED									Dec. .xx±
													Dec. .xxx± .010
													Angles ±0° 30'
													CODE IDENT. NO. OLSP2

ERIE, FAIRVIEW PENNSYLVANIA

SPECTRUM CONTROL INC.

Dwn. J.KAUFFMAN Description

Ckd. 5/14/01 FILTER, SING, PI, BSHG

Apvd.

Scale NONE 1216-001