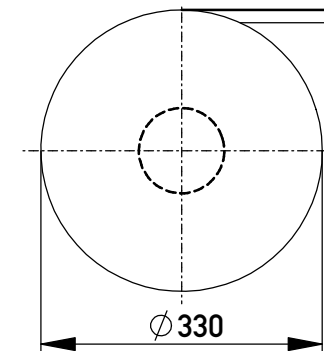
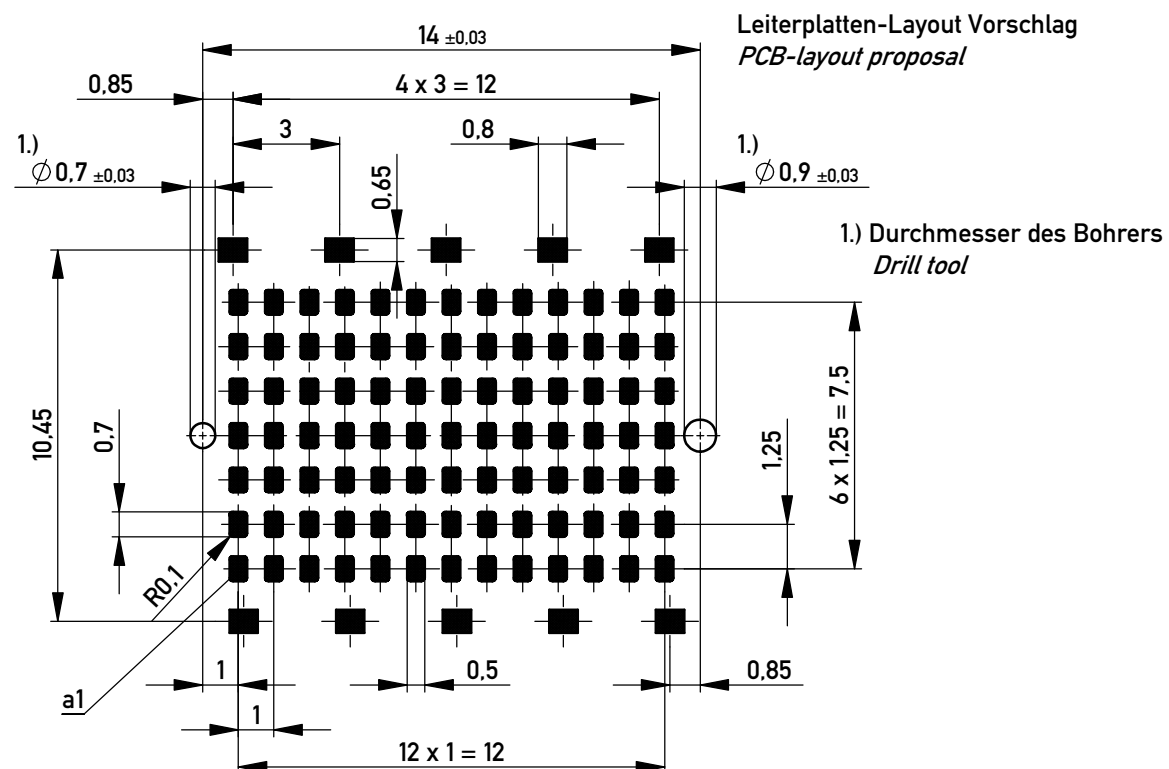
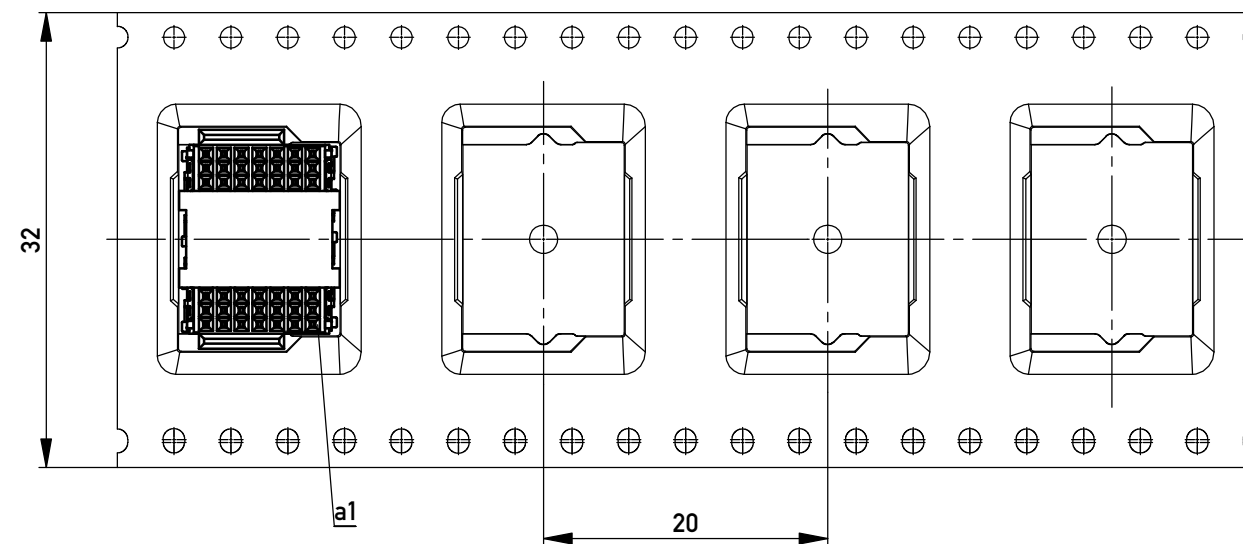
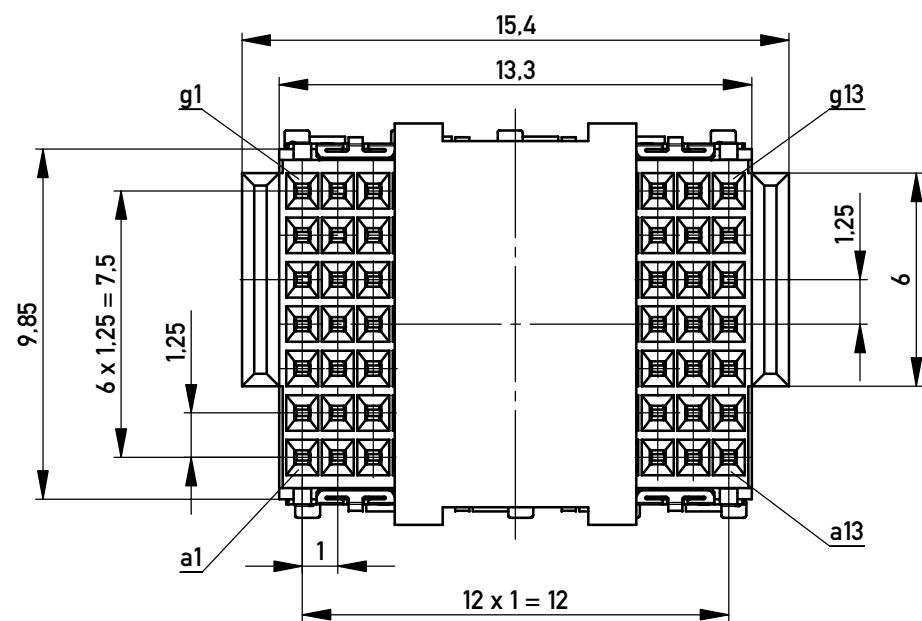


Verpackt in Gurtverpackung
Tape on Reel Packaging
Verpackungseinheit: 380 Stück
Packaging unit: 380 pcs



Abspulrichtung - Reel off Direction



Anforderungsstufe 1
Performance Level 1

Kontaktbereich vergoldet
Mating Area gold plating

Anschlussbereich verzinkt 4-6 µm
Terminal Area 4-6 µm tin plating

Koplanarität der Anschlüsse ≤ 0,1 mm
Coplanarity Area of Termination ≤ 0,1 mm

| | | | | |
|---|--|--------------------------|--|-----|
| Information: | Tolerances | All Dimensions in mm | Scale | 5:1 |
| | All rights reserved. Only for Information. To ensure that this is the latest version of this drawing, please contact one of the ERNI companies before using. | | Designation Federleiste SMD, 91-pol. BM Female con. SMD, 91 cont. BM | |
| Subject to modification without prior notice. Drawing will not be updated. | | www.ERNI.com | 100201930001 | |
| c | 19.02.2013 | | Class MSPEED | |
| Index | Date | K A3 | | |

Copyright by ERNI GmbH
Proprietary notice pursuant to ISO 16016 to be observed.