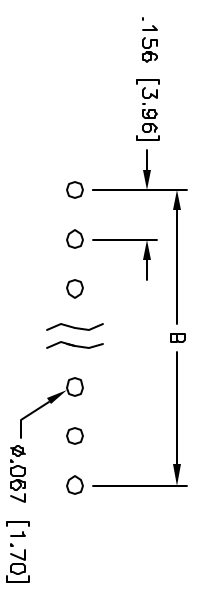
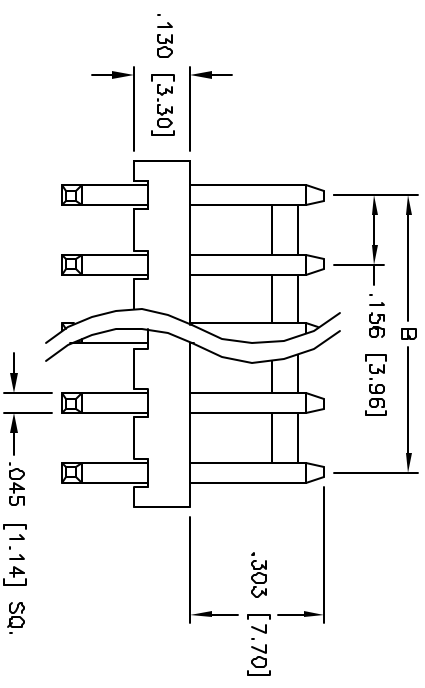
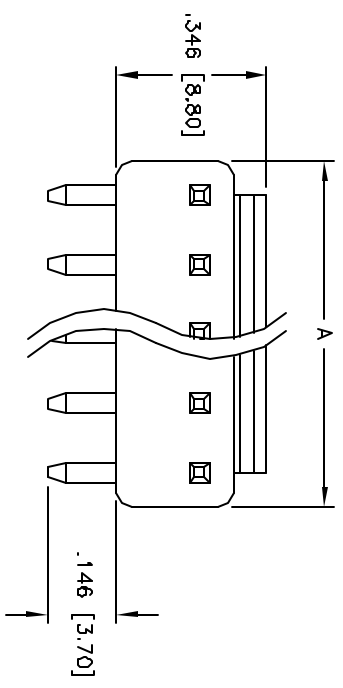


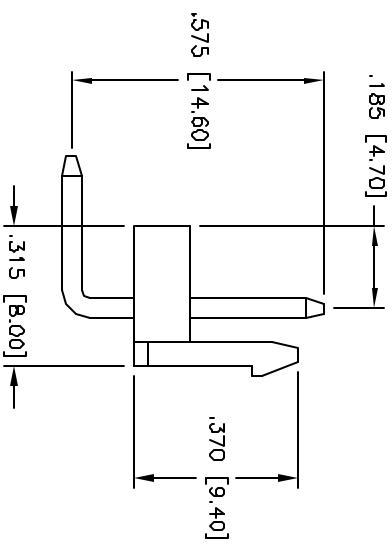
APPROVED: _____

DATE: _____ TITLE: _____

Rev	AWO #	Description	Date	Appr
-		RELEASED	4/12/05	



PCB LAYOUT



Positions: 2 thru 14
 A = .156 [3.96] x No. of Positions + .010 [0.25]
 B = .156 [3.96] x No. of Spaces

UNLESS OTHERWISE SPECIFIED
 ALL DIMENSIONS ARE INCHES [MM]
 TOLERANCES: EXCEPT AS NOTED

INCHES	HILES
X .10	ϕ X \pm .10
XX \pm .020	ϕ XX \pm .010
.XXX \pm .015	ϕ XXX \pm .010

ADAM TECH
 909 Rahway Avenue, Union, NJ 07083
 Phone: 908-687-5000 Fax: 908-687-5710

TITLE: **.156 [3.96] POWER HEADER
 RIGHT ANGLE WITH REAR LOCK**

SPECIFICATIONS:
 Material: Insulator: Nylon 66, rated UL 94V-0
 Insulator color: White
 Contacts: Brass
 Plating: Tin over Copper underplate overall
 Electrical:
 Operating voltage: 250 VAC max
 Current rating: 5 Amps max
 Contact resistance: 20 mohms max
 Insulation resistance: 1,000 Mohms max
 Dielectric withstanding voltage: 1,500 VAC for 1 minute
 Temperature Rating:
 Operating temperature: -25°C to +85°C
 Environmental:
 Lead free, RoHS compliant
 Recommended soldering temp: 230°C for 5 seconds



APPROVALS	DATE	TITLE	SIZE	PART NO.	SCALE	SHEET	OF
DRAWN	SS	4/12/05	X	LHC-XX-983	NTB	1	1
CHECKED							
APPROVED							