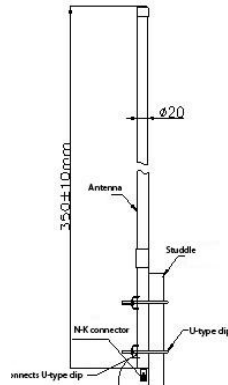


WPANT30087-R1A

900 MHz ISM band Omni-directional Antenna



Note: This is a physical drawing of the actual Antenna.

Description / Application

This is an Omni-directional Pole/Wall mount antenna that operates in the 900 – 960 MHz ISM / cellular band. It comes with a Type-N male connector. The antenna is at DC ground to ensure protection against lightning.

We can assist your engineers to optimize mounting positions for these antennas in your specific application and can further customize the antennas for your specific needs. Please contact sales@worldproducts.com with your specific application requirements.

Electrical Properties

Operating Frequency	900 – 960 MHz
Approximate Antenna Impedance [Ω]	50 Ω
VSWR – Typical	< 2:1
Peak Gain [dBi] (Typical)	3 dBi
Polarization	Vertical
Pattern	Omni Directional
Accepted Power [W] (Max)	50 Watts
Lightning Protection	DC ground

Mechanical / Environmental Properties

Antenna Dimensions	13.8" Height X 0.8" (Dia) (350mm X 20mm)
Antenna Color	White
Connector	Type-N Male
Antenna Radome	Fiberglass
Operating / Storage Temperature	-40°C to +90°C
Environmental	Meets standards for UL 94V-0
Hazardous Materials	RoHS Compliant

Pictures of the Antenna (Drawing)

