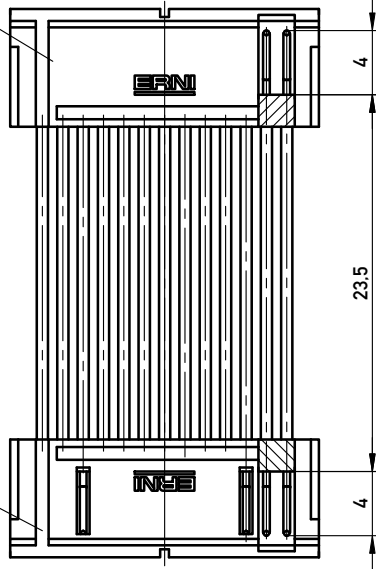
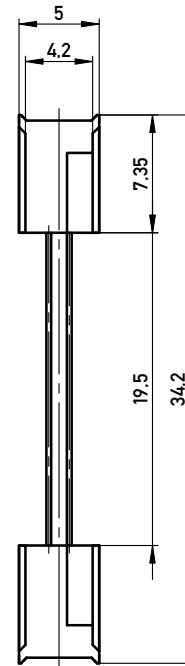
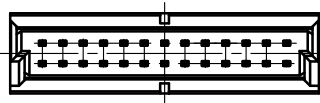


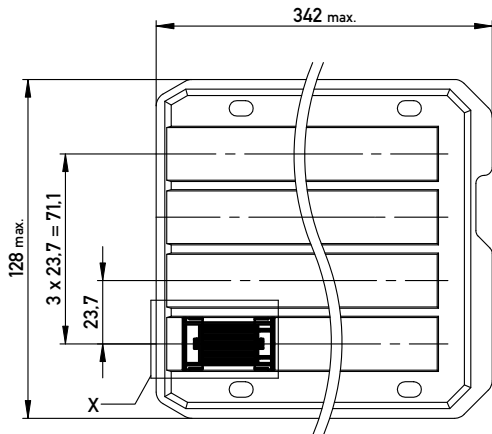
ohne Verriegelung
without interlocking



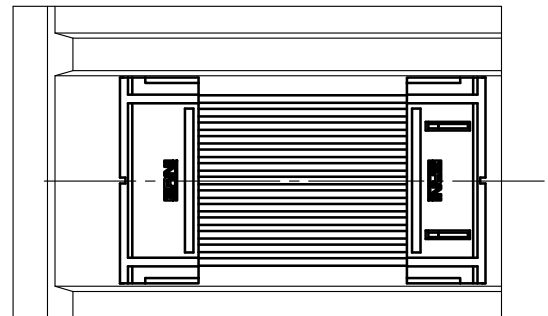
mit Verriegelung
with interlocking



Verpackt in Tray -tray packaging
Verpackungseinheit 36 Stück -packaging unit 36



Einzelheit X (M 2:1)
detail X



Adapterstück für board-to-board Abstand von 36mm (beidseitig verbaut mit Federleiste: 154806, Low Profile)
Adapter for board-to-board height 36mm (in combination with two female connectors: 154806, low profile)

Copyright by ERNI GmbH Proprietary notice pursuant to ISO 16016 to be observed.	Information:	Tolerances All Dimensions in mm	Scale 3:1
	All rights reserved. Only for Information. To ensure that this is the latest version of this drawing, please contact one of the ERNI companies before using.	Subject to modification without prior notice. Drawing will not be updated.	Designation 1,27 DRC Adapterstück BTB 36mm <i>26-polig</i>
	E01 Index	26.06.2008 Date	www.ERNI.com