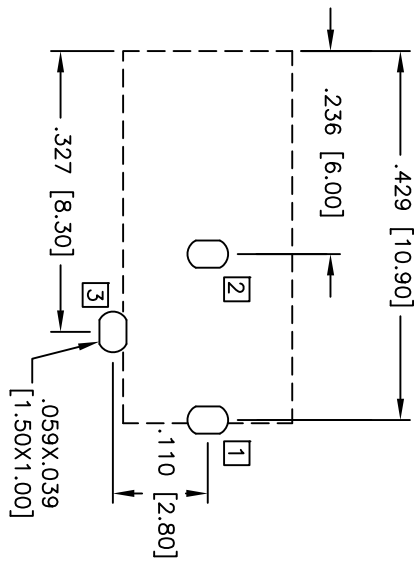
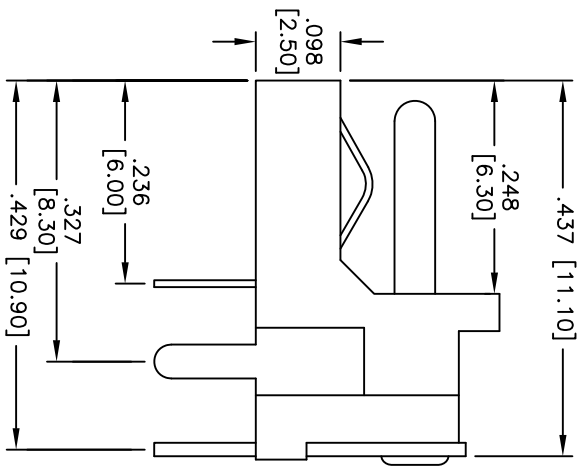
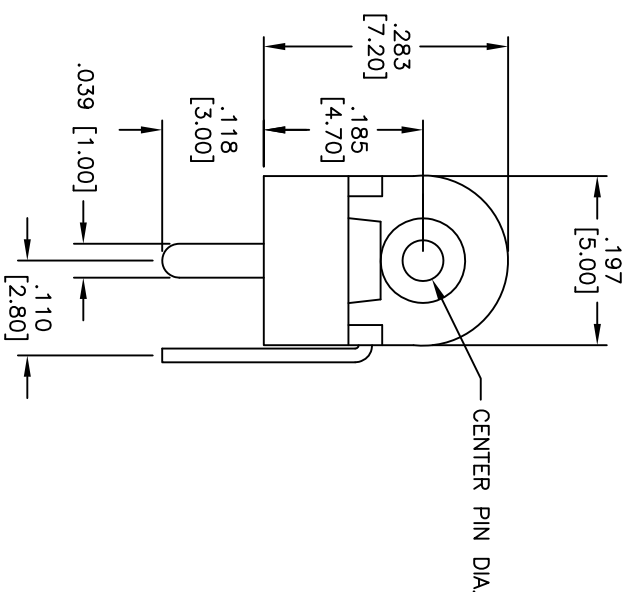


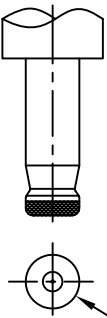
Rev	AWO #	Description	Date	Appr
-		RELEASED	12/10/04	
A		REDRAWN	5/04/09	
B		ADDED DIM.	3/19/10	

APPROVED: _____ TITLE: _____
 DATE: _____

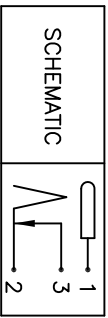


RECOMMENDED PCB LAYOUT
(TOP VIEW)

PART NO.	CENTER PIN DIA.	DC PLUG O.D.
ADC-009-3	.039 [1.00]	.138 [3.50]
ADC-009-4	.051 [1.30]	.138 [3.50]
ADC-009-8	.026 [0.65]	.093 [2.35]



DC MATE PLUG



SCHEMATIC

SPECIFICATIONS:

Material: Insulator: PBT, Glass reinforced, rated UL 94V-0

Insulator color: Black

Center Pin: Brass, Nickel plated

Contacts: Copper Alloy

Plating: Silver over Nickel underplate

Electrical:

Operating voltage: 30 VDC max.

Current rating: 1 Amp max.

Contact resistance: 50 mohms max.

Insulation resistance: 100 Mohms min.

Dielectric withstanding voltage: 500 VAC for 1 minute

Temperature Rating:

Operating temperature: -20°C to +70°C

Environmental:

Lead free, RoHS compliant

Recommended soldering temp: 235°C for 5 sec.



6

5

4

3

2

1

ADAM TECH

909 Railway Avenue, Union, NJ 07083
 Phone: 908-687-5000 Fax: 908-687-5710

TITLE: DC POWER JACK, 1.00mm, 1.30mm, 1.30mm, 0.65mm CENTER PIN

UNLESS OTHERWISE SPECIFIED ALL DIMENSIONS ARE INCHES [MM] TOLERANCES: EXCEPT AS NOTED INCHES		HOLDS	
X	± .10	ØX	± .10
XX	± .020	ØXX	± .015
XXX	± .015	ØXXX	± .010
APPROVALS		DATE	
DRAWN	DY	3/19/10	
CHECKED			
APPROVED			

SIZE	PART NO.	REV.
X	ADC-009-X	B
REF:	S0002C	SCALE: NTS
SHEET 1 OF 1		