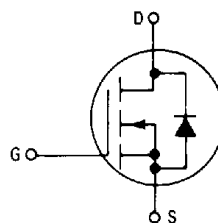
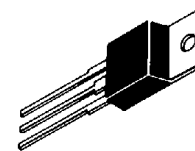


MOTOROLA
SEMICONDUCTOR
TECHNICAL DATA
Designer's Data Sheet
Power Field Effect Transistor
N-Channel Enhancement
Mode Silicon Gate

This TMOS Power FET is designed for high voltage, high speed power switching applications such as switching regulators, converters, solenoid and relay drivers.

- Silicon Gate for Fast Switching Speeds — Switching Times Specified at 100°C
- Designer's Data — I_{DSS} , $V_{DS(on)}$, $V_{GS(th)}$ and SOA Specified at Elevated Temperature
- Rugged — SOA is Power Dissipation Limited
- Source-to-Drain Diode Characterized for Use With Inductive Loads


MTP3N100
TMOS POWER FET
3 AMPERES
 $R_{DS(on)} = 4 \text{ OHMS}$
1000 VOLTS

CASE 221A-06
TO-220AB

3

MAXIMUM RATINGS

Rating	Symbol	Value	Unit
Drain-Source Voltage	V_{DSS}	1000	Vdc
Drain-Gate Voltage ($R_{GS} = 1 \text{ M}\Omega$)	V_{DGR}	1000	Vdc
Gate-Source Voltage — Continuous	V_{GS}	± 20	Vdc
— Non-repetitive ($t_p \leq 50 \mu\text{s}$)	V_{GSM}	± 40	Vpk
Drain Current			Adc
Continuous	I_D	3	
Pulsed	I_{DM}	16	
Gate Current — Pulsed	I_{GM}	1.5	Adc
Total Power Dissipation @ $T_C = 25^\circ\text{C}$	P_D	75	Watts
Derate above 25°C		0.6	W/°C
Operating and Storage Temperature Range	T_J, T_{stg}	-65 to 150	°C

THERMAL CHARACTERISTICS

Thermal Resistance Junction to Case	$R_{\theta JC}$	1.67	°C/W
Thermal Resistance Junction to Ambient	$R_{\theta JA}$	62.5	°C/W
Maximum Lead Temp. for Soldering Purposes, 1/8" from case for 5 seconds	T_L	260	°C

Designer's Data for "Worst Case" Conditions — The Designer's Data Sheet permits the design of most circuits entirely from the information presented. SOA Limit curves — representing boundaries on device characteristics — are given to facilitate "worst case" design.

MTP3N100

ELECTRICAL CHARACTERISTICS ($T_C = 25^\circ\text{C}$ unless otherwise noted)

Characteristic	Symbol	Min	Max	Unit
----------------	--------	-----	-----	------

OFF CHARACTERISTICS

Drain-Source Breakdown Voltage ($V_{GS} = 0, I_D = 0.25 \text{ mA}$)	$V_{(BR)DSS}$	1000	—	Vdc
Zero Gate Voltage Drain Current ($V_{DS} = \text{Rated } V_{DSS}, V_{GS} = 0$) ($V_{DS} = 0.8 \text{ Rated } V_{DSS}, V_{GS} = 0, T_J = 125^\circ\text{C}$)	I_{DSS}	—	0.2 1	mAdc
Gate-Body Leakage Current, Forward ($V_{GSF} = 20 \text{ Vdc}, V_{DS} = 0$)	I_{GSSF}	—	100	nAdc
Gate-Body Leakage Current, Reverse ($V_{GSR} = 20 \text{ Vdc}, V_{DS} = 0$)	I_{GSSR}	—	100	nAdc

ON CHARACTERISTICS

Gate Threshold Voltage ($V_{DS} = V_{GS}, I_D = 1 \text{ mA}$) ($T_J = 100^\circ\text{C}$)	$V_{GS(th)}$	2 1.5	4.5 4	Vdc
Static Drain-Source On-Resistance ($V_{GS} = 10 \text{ Vdc}, I_D = 1.5 \text{ Adc}$) ($V_{GS} = 10 \text{ Vdc}, I_D = 2 \text{ Adc}$)	$R_{DS(on)}$	— —	4 —	Ohm
Drain-Source On-Voltage ($V_{GS} = 10 \text{ V}$) ($I_D = 3 \text{ Adc}$) ($I_D = 1.5 \text{ Adc}, T_J = 100^\circ\text{C}$) ($I_D = 4 \text{ Adc}$) ($I_D = 2 \text{ Adc}, T_C = 100^\circ\text{C}$)	$V_{DS(on)}$	— — — —	12 10 — 14	Vdc
Forward Transconductance ($V_{DS} = 10 \text{ V}, I_D = 1.5 \text{ A}$) ($V_{DS} = 10 \text{ V}, I_D = 2 \text{ A}$)	g_{FS}	2 —	— —	mhos

DYNAMIC CHARACTERISTICS

Input Capacitance	$(V_{DS} = 25 \text{ V}, V_{GS} = 0,$ $f = 1 \text{ MHz})$	C_{iss}	—	1500	pF
Output Capacitance		C_{oss}	—	150	
Reverse Transfer Capacitance		C_{rss}	—	60	

SWITCHING CHARACTERISTICS ($T_J = 100^\circ\text{C}$)

Turn-On Delay Time	$(V_{DD} = 25 \text{ V}, I_D = 0.5 \text{ Rated } I_D$ $R_{gen} = 50 \text{ ohms}$ See Figs. 8 and 9.	$t_{d(on)}$	—	40	ns
Rise Time		t_r	—	40	
Turn-Off Delay Time		$t_{d(off)}$	—	250	
Fall Time		t_f	—	75	
Total Gate Charge	$(V_{DS} = 0.8 \text{ Rated } V_{DSS},$ $I_D = \text{Rated } I_D, V_{GS} = 10 \text{ Vdc}$ See Figs. 10 and 11.	Q_g	55 (Typ)	85	nC
Gate-Source Charge		Q_{gs}	30 (Typ)	—	
Gate-Drain Charge		Q_{gd}	25 (Typ)	—	

SOURCE DRAIN DIODE CHARACTERISTICS

Forward On-Voltage	$(I_S = \text{Rated } I_D, V_{GS} = 0)$	V_{SD}	1.1 (Typ)	1.5	Vdc
Forward Turn-On Time		t_{on}	200 (Typ)	—	ns
Reverse Recovery Time		t_{rr}	1000 (Typ)	—	ns

TYPICAL CHARACTERISTICS

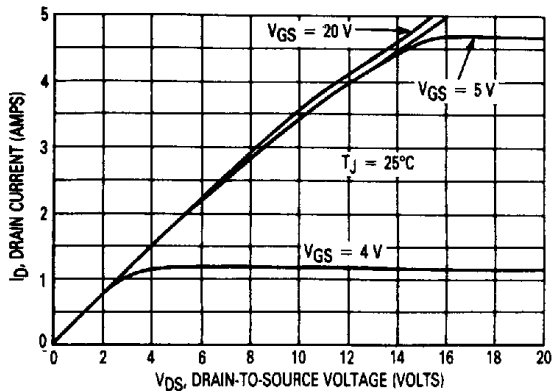


Figure 1. On-Region Characteristics

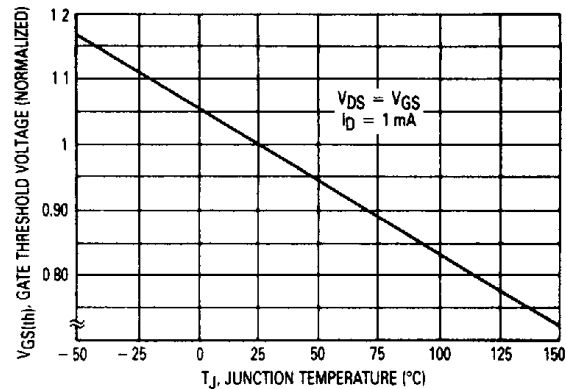


Figure 2. Gate-Threshold Voltage Variation with Temperature

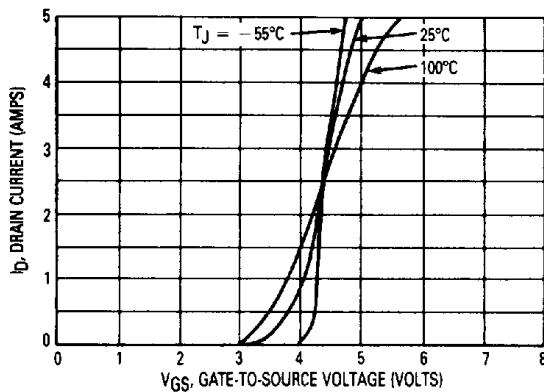


Figure 3. Transfer Characteristics

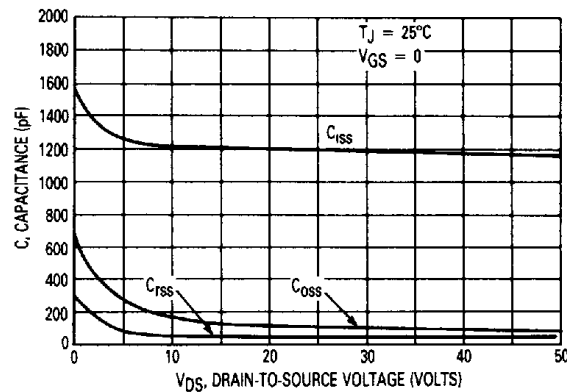


Figure 4. Capacitance Variation

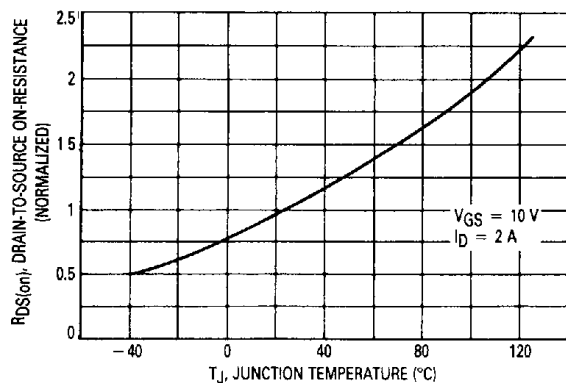


Figure 5. Normalized On-Resistance versus Temperature

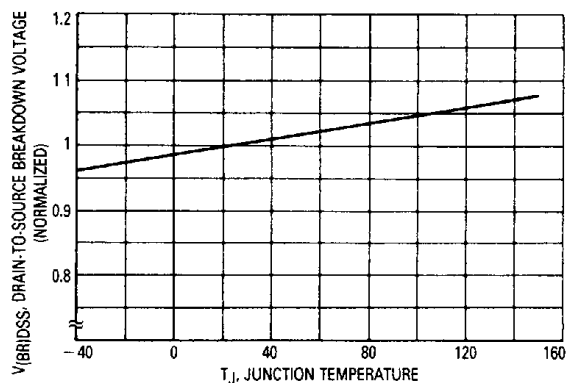


Figure 6. Normalized Breakdown Voltage versus Temperature

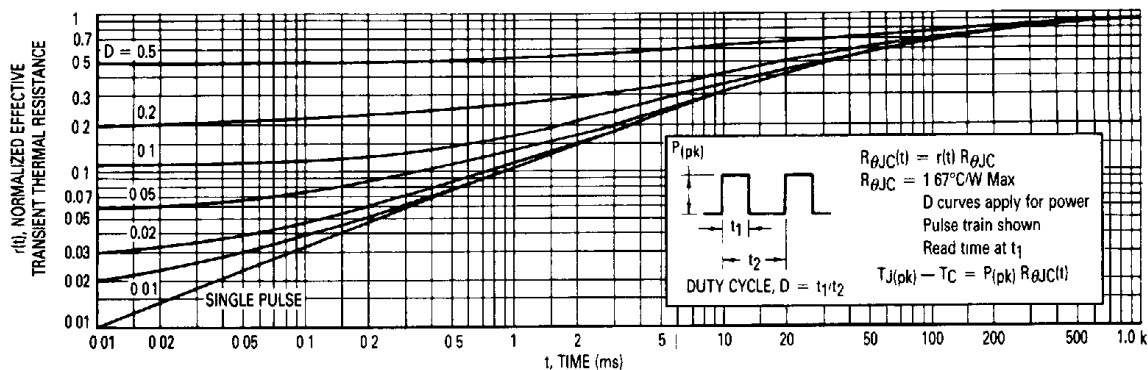


Figure 7. Thermal Response

3

RESISTIVE SWITCHING

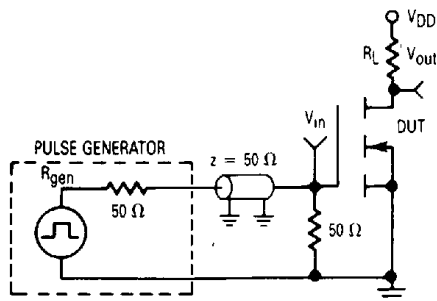


Figure 8. Switching Test Circuit

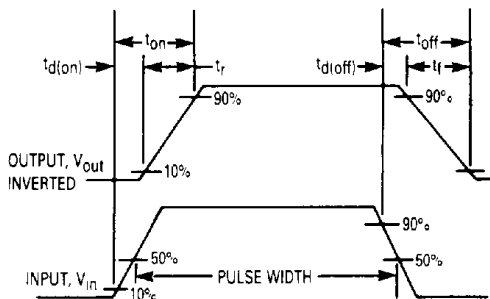


Figure 9. Switching Waveforms

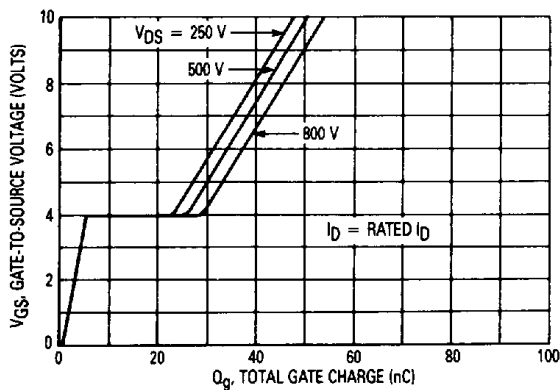


Figure 10. Gate Charge Variation

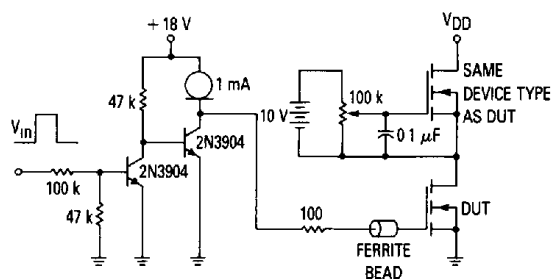


Figure 11. Gate Charge Test Circuit

SAFE OPERATING AREA INFORMATION

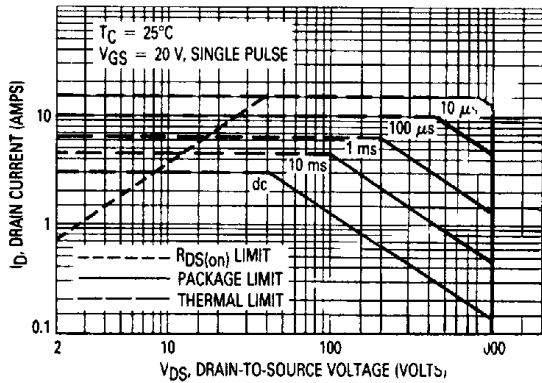


Figure 12. Maximum Rated Forward Biased Safe Operating Area

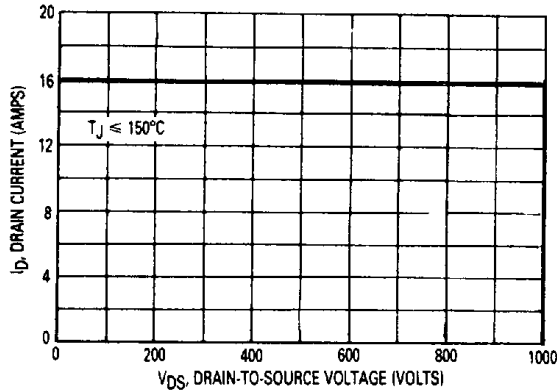


Figure 13. Maximum Rated Switching Safe Operating Area

FORWARD BIASED SAFE OPERATING AREA

The dc data of Figure 11 is based on a case temperature (Tc) of 25°C and a maximum junction temperature (Tjmax) of 150°. The actual junction temperature depends on the power dissipated in the device and its case temperature. For various pulse widths, duty cycles, and case temperatures, the peak allowable drain current (IDM) may be calculated with the aid of the following equation:

$$I_{DM} = I_{D(25^{\circ}C)} \left[\frac{T_{J(max)} - T_C}{P_D \cdot R_{\theta JC} \cdot r(t)} \right]$$

where

ID(25°C) = the dc drain current at Tc = 25°C from Figure 11

TJ(max) = rated maximum junction temperature

Tc = device case temperature

PD = rated power dissipation at Tc = 25°C

RθJC = rated steady state thermal resistance

r(t) = normalized thermal response from Figure 7

SWITCHING SAFE OPERATING AREA

The switching safe operating area (SOA) of Figure 12 is the boundary that the load line may traverse without incurring damage to the MOSFET. The fundamental limits are the peak current, IDM and the breakdown voltage, V(BR)DSS. The switching SOA shown in Figure 12 is applicable for both turn-on and turn-off of the devices for switching times less than one microsecond.

The power averaged over a complete switching cycle must be less than:

$$\frac{T_{J(max)} - T_C}{R_{\theta JC}}$$