



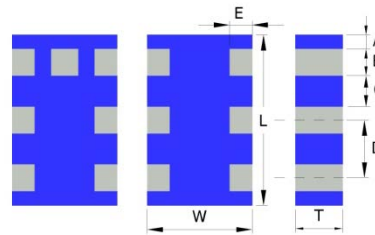
PRODUCT FEATURES

1. Surface mount band pass filter with a small size of 2.0 X 1.25 X 0.6 mm, RoHS compliant.
2. Provide low insertion loss and high rejection rate.
3. Highly stable under temperature and humidity changes.

RF CHARACTERISTICS

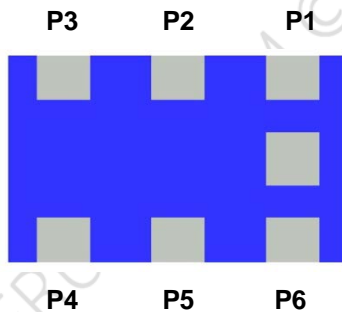
P/N BM2450K0805AT	Specification
Frequency range	2400 - 2500 MHz
Insertion Loss (max)	1.5 dB max at 25°C 1.7 dB max -40°C to +85°C
Return Loss	9.5 dB Min.
Impedance (Unbalanced)	50 Ω
Impedance (Balanced)	Impedance match to T.I. CC253X, CC254X, CC257X, CC853X and CC852X Chipsets
Attenuation (min.)	12 dB @ 1000 MHz 15 dB @ 4800 - 5000 MHz 20 dB @ 7200 - 7500 MHz
Operating temperature range	-40°C to +85°C

PHYSICAL DIMENSIONS



Symbol	Dimension (mm)
L	2.00 ± 0.10
W	1.25 ± 0.10
T	0.60 ± 0.10
A	0.20 ± 0.10
B	0.30 ± 0.10
C	0.35 ± 0.10
D	0.65 ± 0.10
E	0.25 ± 0.10

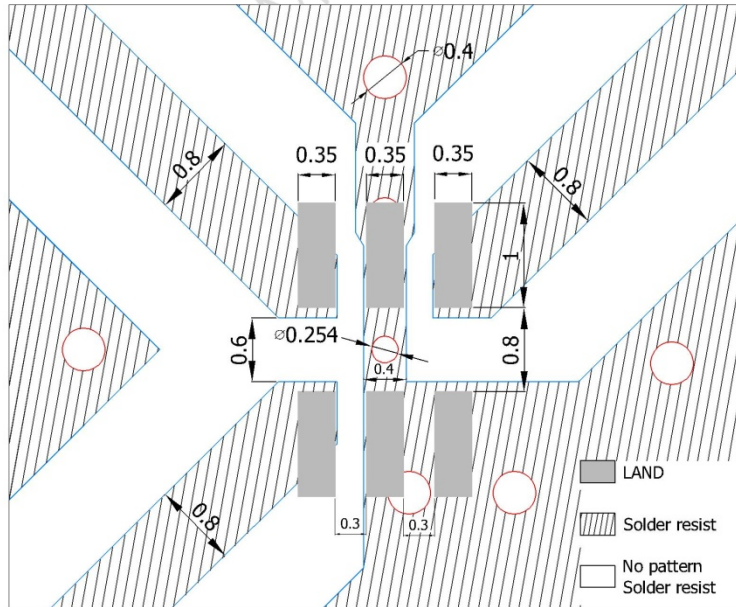
TERMINAL CONFIGURATION



PIN	Connection	PIN	Connection
P1	Unbalance Port	P4	Balance Port
P2	GND	P5	GND
P3	Balance Port	P6	GND



PCB DESIGN/LAYOUT CONSIDERATION



Note:

- Design trace width to be 50Ω impedance.

Typical RF Performance

