

## TO-92 Plastic-Encapsulate Transistors

### 79L05 Three-terminal positive voltage regulator

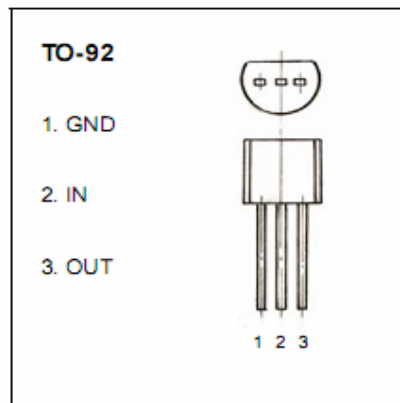
**FEATURES:**

Maximum Output current ICM: 0.1A

Output voltage VO: -5V

Continuous total dissipation

PD: 0.625W(Ta=25°C)



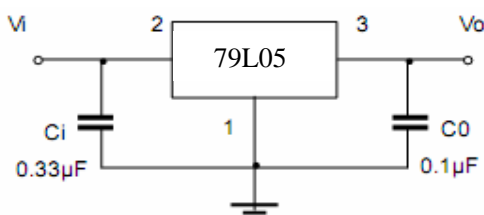
#### ABSOLUTE MAXIMUM RATINGS(Operating temperature unless otherwise specified)

Symbol (符号)	Parameter (参数名称)	Value (额定值)	Units (单位)
$V_i$	Input Voltage	-30	V
$T_{OPR}$	Operating junction Temperature Range	0~+125	°C
$T_{stG}$	Storage Temperature Range	-55~+150	°C

#### ELECTRICAL CHARACTERISTICS (Tamb=25°C unless otherwise specified)

Parameter	Symbol	Test conditions	MIN	TYP	MAX	UNIT	
Output voltage	$V_o$	25°C	-4.8	-5.0	-5.2	V	
		$-7V \leq V_i \leq -20V, I_o = 1mA \sim 40mA$	0-125°C	-4.75	-5.0	-5.25	V
		$I_o = 1mA \sim 70mA$		-4.75	-5.0	-5.25	V
Load Regulation	$\Delta V_o$	$I_o = 1mA \sim 100mA$ 25°C		20	60	mV	
		$I_o = 1mA \sim 40mA$ 25°C		10	30	mV	
Line regulation	$\Delta V_o$	$-7V \leq V_i \leq -20V$		15	150	mV	
		$-8V \leq V_i \leq -20V$ 25°C		12	100	mV	
Quiescent Current	$I_q$	25°C			6	mA	
Quiescent Current Change	$\Delta I_q$	$-8V \leq V_i \leq -20V$ 0-125°C			1.5	mA	
	$\Delta I_q$	$1mA \leq V_i \leq 40mA$ 0-125°C			0.1	mA	
Output Noise Voltage	$V_N$	$10Hz \leq f \leq 100KHz$ 25°C		40		uV	
Ripple Rejection	RR	$-8V \leq V_i \leq -18V, f = 120Hz$ 0-125°C	41	49		dB	
Dropout Voltage	$V_d$	25°C		1.7		V	

**TYPICAL APPLICATION**



Note : Bypass capacitors are recommended for optimum stability and transient response and should be located as close as possible to the regulators.