

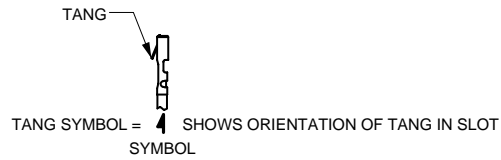
Contura Accessories

To easily integrate Contura products into your system, Carlingswitch also offers many accessories, including:

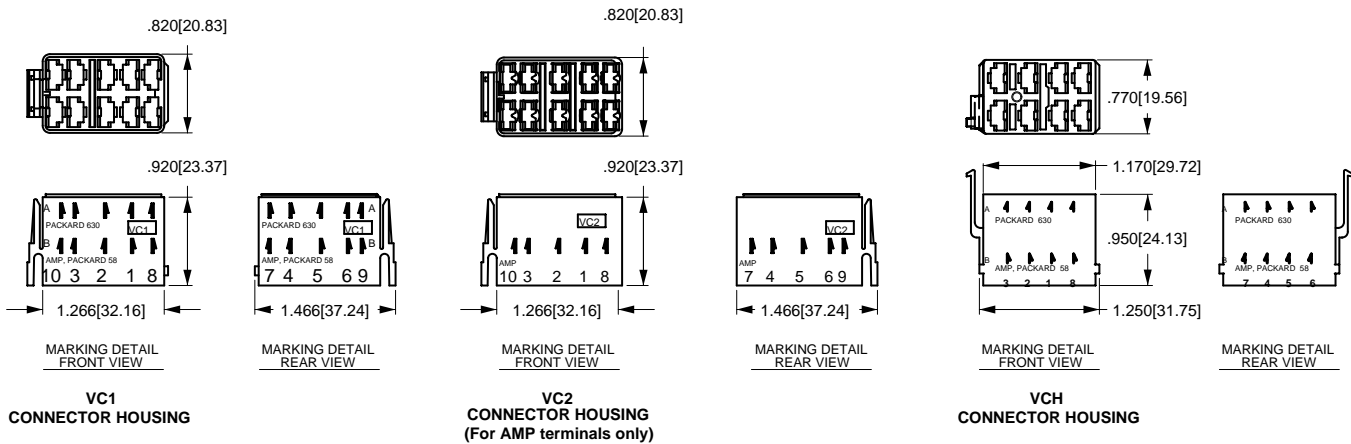
Contura Connectors



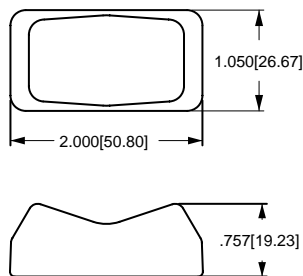
Q.C. SELECTION GUIDE					
COMPANY SERIES	PART NO		WIRE RANGE		ORIENTATION
	PLAIN BRASS	TIN PLATED BRASS	AWG	MM ² (REF)	
PACKARD 58 SERIES	02965580		12	3.0	B
	02965471	12010601	(2)16-14	(2)1.0-2.0	
	02965470		16-14	1.0-2.0	
	02965469	06288318	20-18	.5-8	
PACKARD METRI-PACK 630 SERIES		12084590	12	3.0	A
		12052224	12	3.0	
		12015870	16-14	1.0-2.0	
		12020035	(2)22-18	(2).5-.8	
	12015832	12015869	20-18	.5-.8	
		12052222	20-22	.35-.5	
AMP 250 SERIES FASTIN-FASTON	60253-1	60253-2	16-12	1.3-3	B
	42100-1	42100-2	(2) 16	(2) 1.3	
	60295-1	60295-2	18-14	.8-2	
		22-18	.3-9		



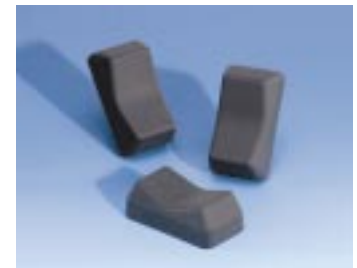
NOTE: Consult Delphi Packard and/or Amp on actual part numbers and availability.
AMP is a registered trademark of AMP Inc. Harrisburg, PA
Delphi Packard is a registered trademark of Delphi-Packard Electrical Systems Warren, Ohio



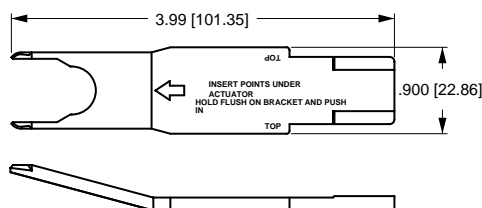
Contura X Boot



**VB1-01
CONTURA X BOOT**



Contura II, II & IV Actuator Removal Tool



**VRT
ACTUATOR REMOVAL
TOOL
(For flush bracket)**



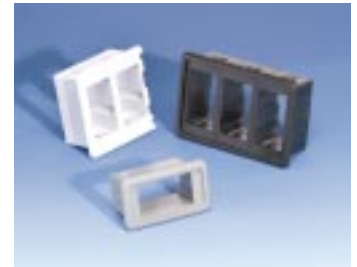
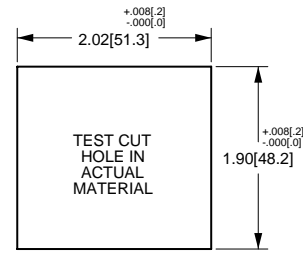
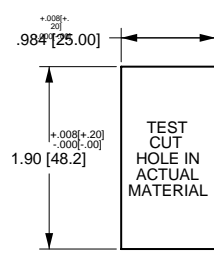
Contura Mounting Panels

MOUNTING PANEL

For additional units, add 1.03[26.2] per unit.
For more than 2 V-Series Switches, add middle section. Available in Panel Thicknesses listed below. Consult factory.

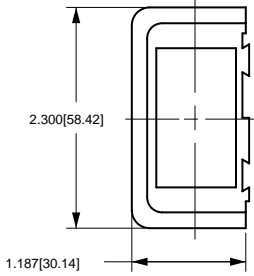
MOUNTING PANEL THICKNESS

.062[1.57]	.187[4.75]
.093[2.36]	.250[6.35]
.125[3.17]	.375[9.52]

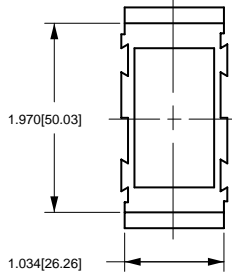


VMS MOUNTING PANEL HOLE

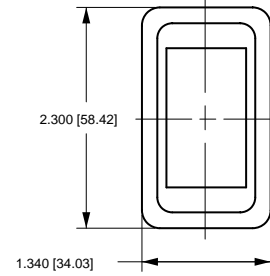
MOUNTING PANEL OPENING (2) UNITS



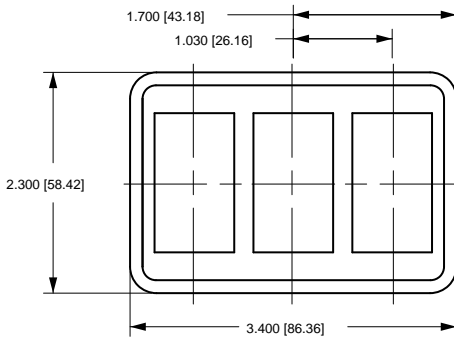
VME MOUNTING PANEL END



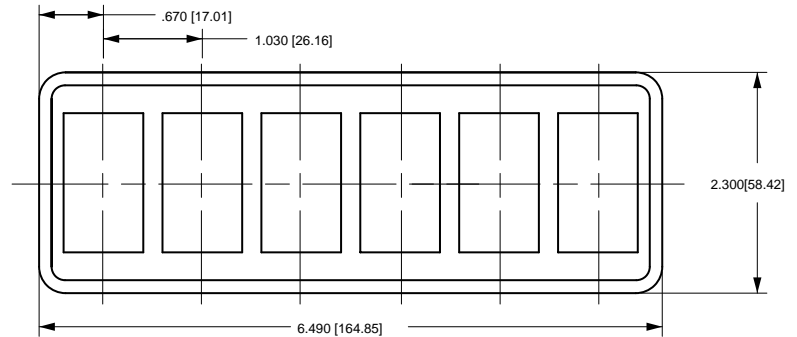
VMM MOUNTING PANEL MIDDLE



VMS MOUNTING PANEL

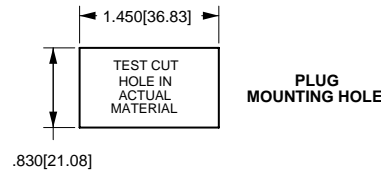


VM3 MOUNTING PANEL

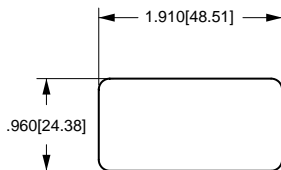
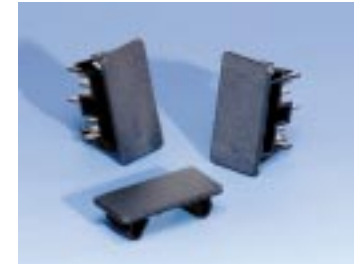


VM6 MOUNTING PANEL

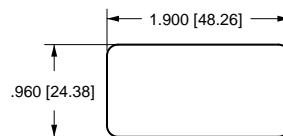
Contura Hole Plug



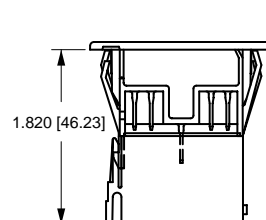
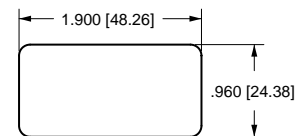
PLUG MOUNTING HOLE



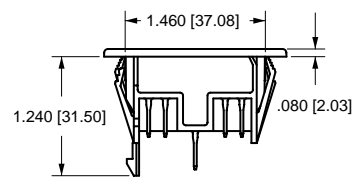
VHP MOUNTING PANEL PLUG



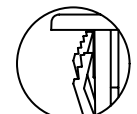
DETAIL VIEW VH1 HOLE PLUG (No wing serrations for ease of removal)



VH1 HOLE PLUG (No wing serrations) (With VC1 connector attached)



VH2 HOLE PLUG (With wing serrations)



DETAIL VIEW VH2 HOLE PLUG (With wing serrations)