

Product Features

- GaN on SiC Broadband High Power Amplifier
- 1000 ~ 2000MHz Operation Bandwidth
- Small Signal Gain 27dB min.
- 20W Typical. @ P3dB

Applications

- General Purpose.



Package Type : DP-75

Description

The power amplifier module is designed for Broadcasting, Telecommunication, Medical and Other markets.

Operating frequency range is from 1000 ~ 2000MHz.

Gallium Nitride on SiC technology is used and attached on an aluminum sub carrier. Full in/out matching for broadband performance is already applied.

Improved thermal handling by patented technology.

Electrical Specifications @ $V_{CC} = 28V$; $T_c = 45^\circ C$; $Z_s = Z_L = 50\Omega$

| PARAMETER | UNIT | MIN | TYP | MAX | CONDITION |
|--|------|------|---------|---------|---|
| Operating Frequency | MHz | 1000 | - | 2000 | - |
| Small Signal Gain | dB | 27 | 29 | 31 | - |
| Gain Variation vs Frequency | dBpp | - | ± 1 | ± 2 | - |
| P ₃ dB | dBm | 41 | 43 | - | 1000 ~ 1200MHz |
| | | 42 | 44 | - | 1200 ~ 2000MHz |
| OIP3 @ P _o = +33dBm (1MHz Tone spacing, CW 2-Tone) | dBm | 48 | 50 | - | 1000 ~ 1600 MHz |
| | | 46 | 48 | - | 1600 ~ 2000 MHz |
| Input Return Loss | dB | - | -10 | -6 | - |
| Output Return Loss | dB | - | -10 | -5 | - |
| 2 nd Harmonic suppression | dBc | - | -35 | -28 | CW 1-tone @P _o = +30dBm, Freq 1000MHz |
| Supply Voltage | V | 27.5 | 28 | 30 | V _{cc} (=V _{ds}) |
| Quiescent Current consumption | A | - | 2.2 | 2.5 | - |
| Current Consumption @ P ₃ dB | A | - | - | 3.6 | CW 1-tone |
| On/Off Switching Time* | uS | - | 3 | 5 | On : TTL "Low" |
| | | | | | Off : TTL "High"(30mA@Disable) |
| Shut Down or Switch On/Off TTL Voltage** | V | 0 | - | 0.5 | On : TTL "Low"(Enable) |
| | | 2.5 | 5 | 5.5 | Off : TTL "High" |

Note.

*. Gate On/Off : High speed switching

**.. Drain On/Off : 300ms delay

Absolute Maximum Ratings

| PARAMETER | UNIT | RATING |
|---------------------|------|-----------------------|
| Input RF Power | dBm | 20 |
| Supply Voltage | V | 30 |
| Load Mismatch Value | - | 3 : 1 @all load phase |

* Input Signal Condition : CW 1-Tone

Environmental Characteristics

| PARAMETER | UNIT | MIN | TYP | MAX | SYMBOL |
|----------------------------|-----------------------------------|-----|-----|-----|--------|
| Operating Case Temperature | °C | -10 | - | 80 | Tc |
| Storage Temperature | °C | -40 | - | 105 | Tstg |
| Vibration | MIL-STD-810G Method 514.6 ANNEX C | | | | VI |

Ordering Information

| Part Number | Package |
|--------------|-----------------------------------|
| RWP15020-50 | Pallet |
| RWP15020-5H* | Module assembled with RWP15020-50 |

* RWP15020-5H is a SMA connectorized housing version of RWP15020-50. Electrical parameters are all same as RWP15020-50.

For more information, please contact RFHIC

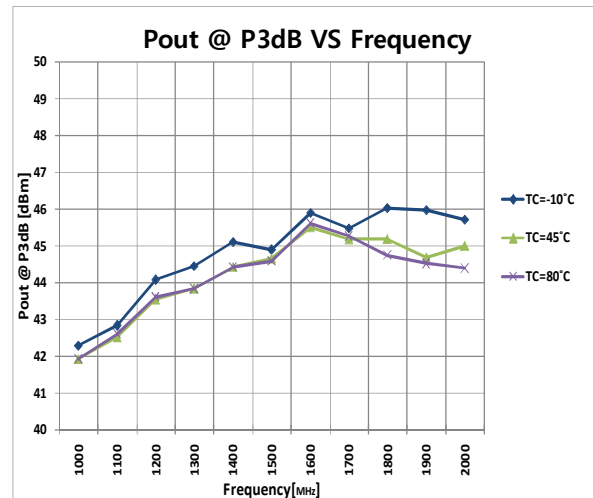
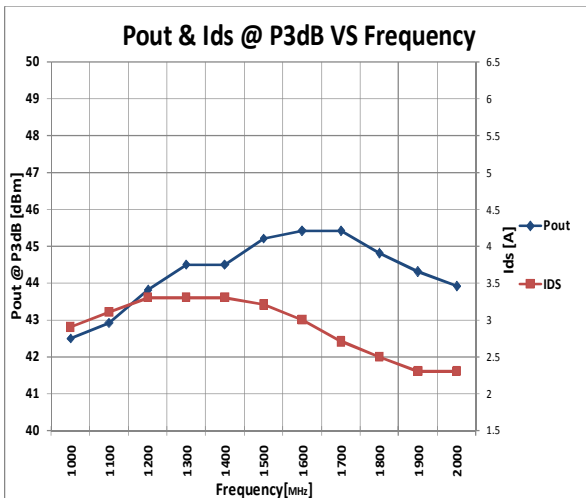
Mechanical Specifications

| PARAMETER | | UNIT | TYP |
|-----------------------------|---------|------|---------------------------|
| Dimension | Package | mm | 70(L) x 50.8(W) x 17.1(H) |
| | Housing | | 90(L) x 75(W) x 25(H) |
| Weight | Package | g | 75 |
| | Housing | | 270 |
| Housing RF IN/OUT Connector | | - | SMA Female |
| Cooling | | - | External Heat-sink |

*Dimension and weight may change without notice.

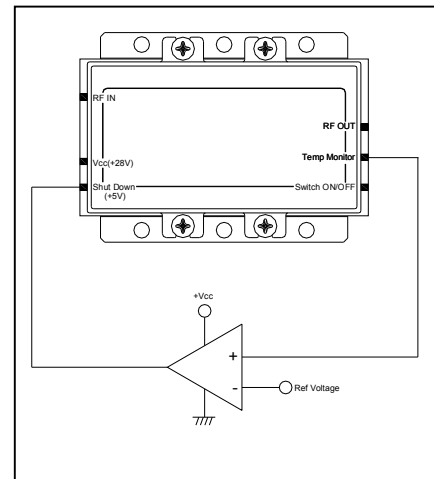
Typical Performance @ 25°C

| Frequency (MHz) | P1dB (dBm) | P3dB (dBm) | Current@P1dB (A) | Current@P3dB (A) | 2nd Harm@30dBm (dBc) | OIP3 (30dBm/Tone) (dBm) |
|--------------------|---------------|---------------|---------------------|---------------------|-------------------------|----------------------------|
| 1000 | 39.4 | 42.5 | 2.3 | 2.9 | -34.7 | 49.5 |
| 1100 | 39.8 | 42.9 | 2.4 | 3.1 | -43.5 | 49.8 |
| 1200 | 40.6 | 43.8 | 2.1 | 3.3 | -49.4 | 50.4 |
| 1300 | 41.5 | 44.5 | 2.5 | 3.3 | -47.7 | 50.8 |
| 1400 | 42.1 | 44.5 | 2.5 | 3.3 | -43.3 | 51.0 |
| 1500 | 42.3 | 45.2 | 2.5 | 3.2 | -41.8 | 51.1 |
| 1600 | 43.0 | 45.4 | 2.4 | 3.0 | -43.8 | 51.0 |
| 1700 | 43.2 | 45.4 | 2.3 | 2.7 | -46.1 | 50.3 |
| 1800 | 42.6 | 44.8 | 2.1 | 2.5 | -49.6 | 49.5 |
| 1900 | 42.4 | 44.3 | 2.0 | 2.3 | -52.7 | 48.5 |
| 2000 | 42.0 | 43.9 | 2.0 | 2.3 | -61.3 | 47.6 |



Precautions

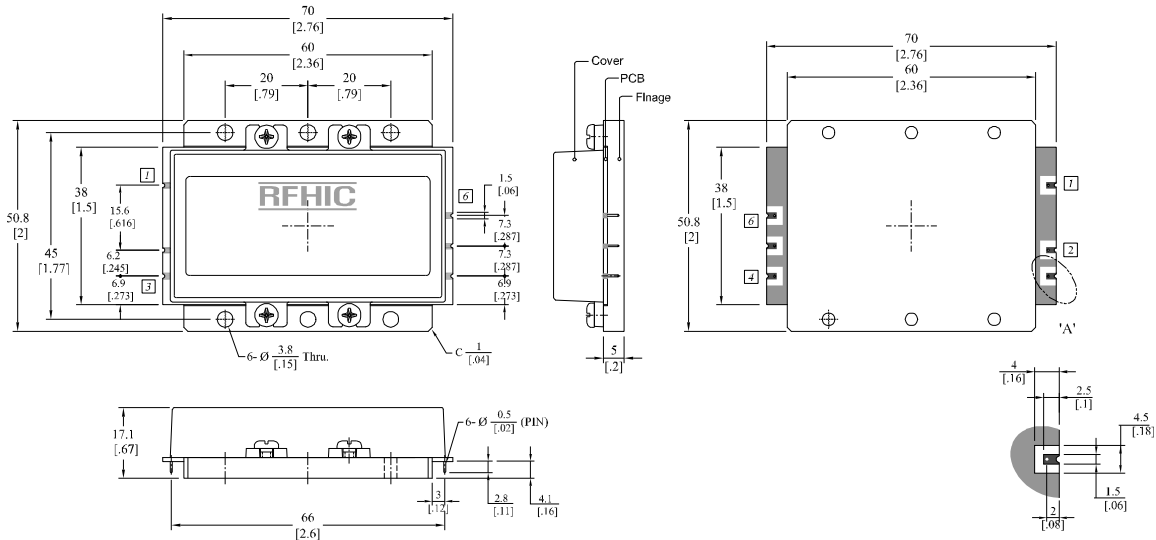
1. This product is designed to be used for broadband amplification. Heat generation is higher when there is no RF signal in the device. Therefore, the worst case scenario is when there is no RF signal, and the amplifier is “on” with current draw. The temperature must be calculated properly. Case temperature must maintain below 80°C. Right side drawing notes how to use a temperature monitoring function to protect against overheating.
2. Thermal Grease or Metal Thermal Interface Materials are recommended for heat dissipation. An example would be spreading thermal grease on the bottom of the device



Comparator Block (with hysteresis gap)

Package Dimensions (Type: DP-75)

* Unit: mm[inch] | Tolerance: ±0.2[.008]

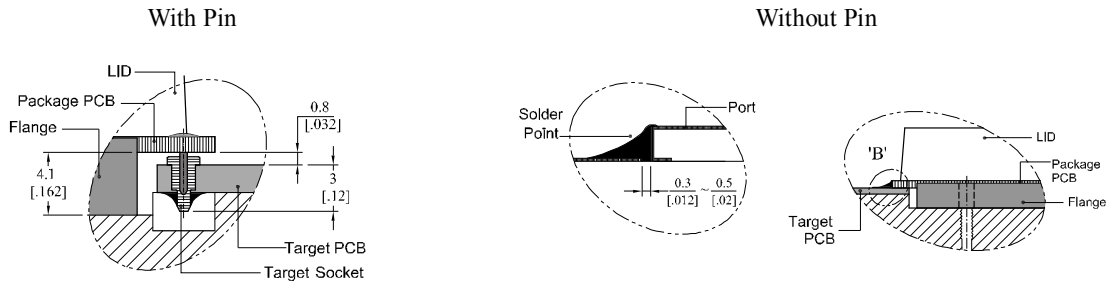


| Pin Description | | | |
|-----------------|----------------|--------|---------------|
| Pin No | Function | Pin No | Function |
| 1 | RF IN | 4 | Switch ON/OFF |
| 2 | Vcc(+28V) | 5 | Temp Monitor |
| 3 | Shut Down(+5V) | 6 | RF OUT |

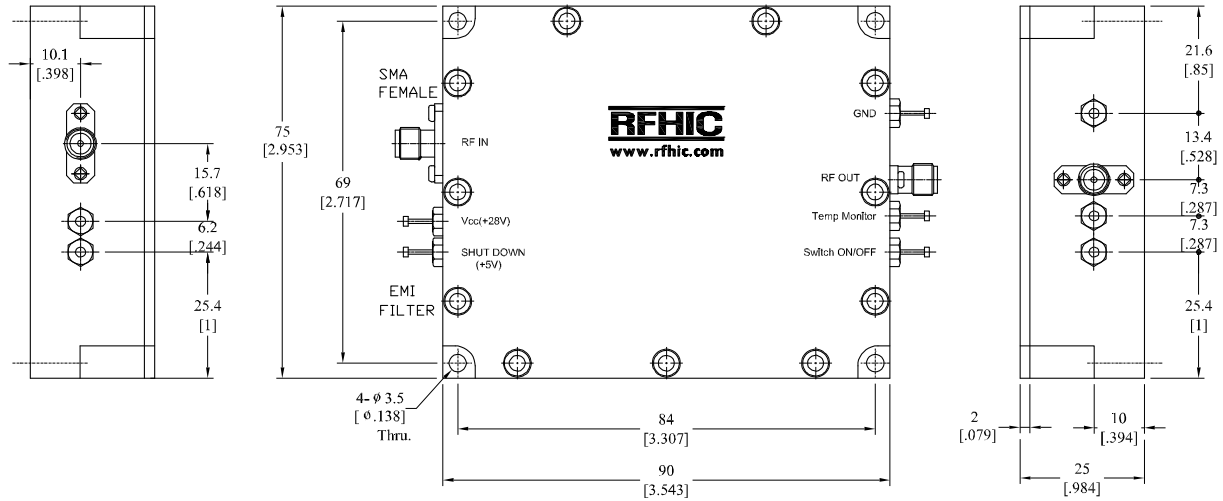
* Terminal Pin Information : ASK206091,AA (Acethink, Pin) , ASK20556,AA-1(Acethink, Pin Socket)

* Recommended Screw Torque : 8.0kgf.cm±1 using SEMS M3 10mm Bolt

How to connected the package to a target PCB



SMA Connectorized Housing Dimensions



Revision History

| Part Number | Release Date | Version | Modification | Data Sheet Status |
|--------------------|---------------------|----------------|--------------------------------|--------------------------|
| RWP15020-50 | 2014.5.23 | 1.7 | Condition & Graph modification | - |
| RWP15020-50 | 2014.4.2 | 1.6 | Mechanical Specifications | - |
| RWP15020-50 | 2013.10.18 | 1.5 | Parameter & Graph modification | - |

RFHIC Corporation reserves the right to make changes to any products herein or to discontinue any product at any time without notice. While product specifications have been thoroughly examined for reliability, RFHIC Corporation strongly recommends buyers to verify that the information they are using is accurate before ordering. RFHIC Corporation does not assume any liability for the suitability of its products for any particular purpose, and disclaims any and all liability, including without limitation consequential or incidental damages. RFHIC products are not intended for use in life support equipment or application where malfunction of the product can be expected to result in personal injury or death. Buyer uses or sells such products for any such unintended or unauthorized application, buyer shall indemnify, protect and hold RFHIC Corporation and its directors, officers, stockholders, employees, representatives and distributors harmless against any and all claims arising out of such unauthorized use.

Sales, inquiries and support should be directed to the local authorized geographic distributor for RFHIC Corporation. For customers in the US, please contact the US Sales Team at 919-677-8780. For all other inquiries, please contact the International Sales Team at 82-31-250-5078.