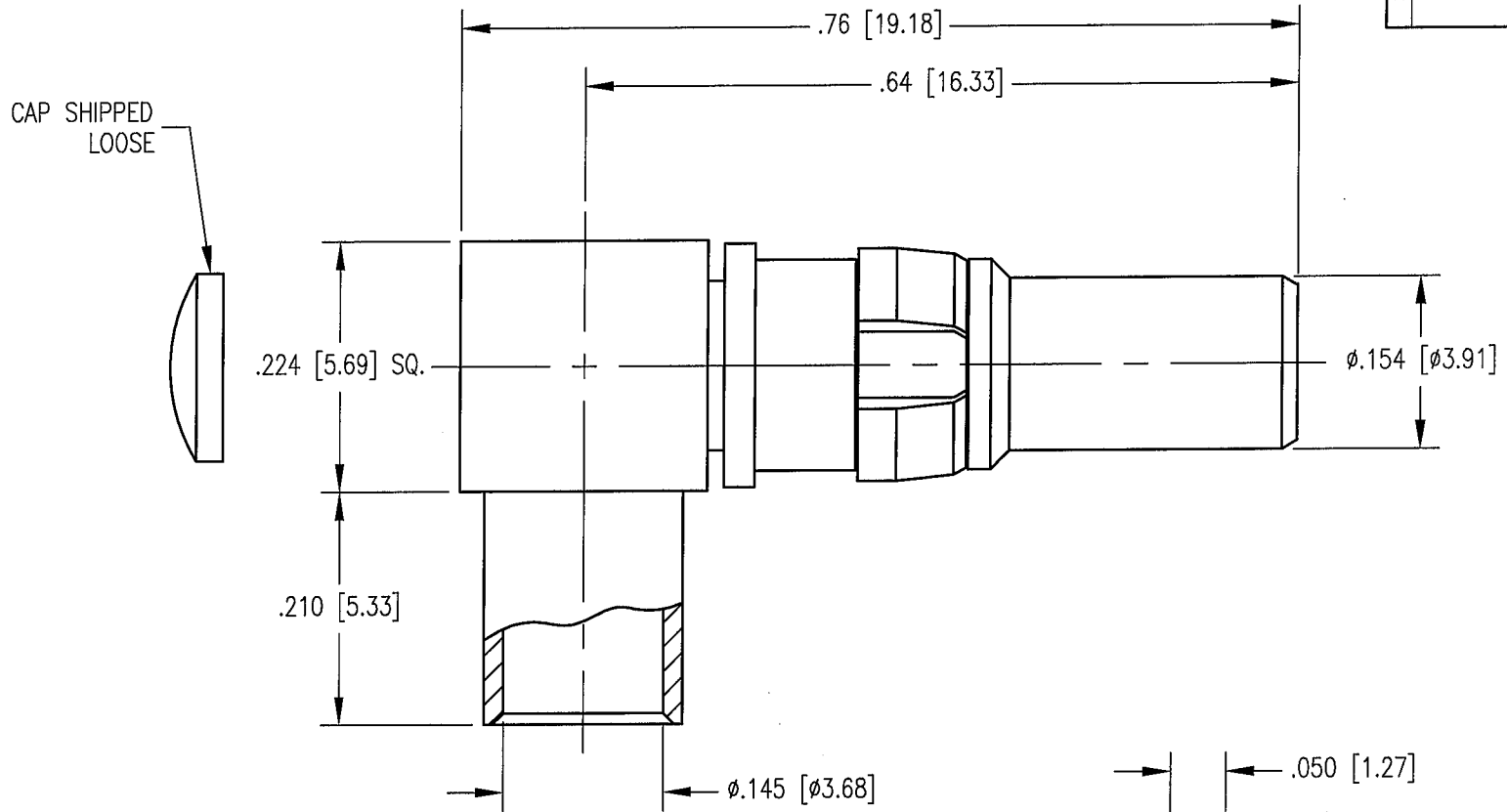
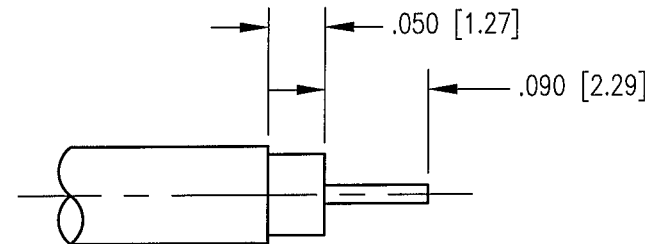


DWG. NO. 312-510-1410G			
REV	DESCRIPTION	BY DATE	APPD
A	ECR 7258	70/SLZ JUN	WJA



NOTES:

- MATERIALS:  
 CENTER CONTACT: COPPER ALLOY  
 CLIP RING: BERYLLIUM COPPER PER ASTM B194  
 INSULATOR: TEFLON PER ASTM D1710  
 ALL OTHER METAL PARTS: BRASS PER ASTM B16
- FINISHES:  
 BODY AND CENTER CONTACT: .000030 MIN. GOLD PER MIL-G-45204 OVER  
 .000050 MIN. NICKEL PER QQ-N-290  
 CAP: .000005 MIN. GOLD PER MIL-G-45204 OVER  
 .000050 MIN. NICKEL PER QQ-N-290  
 CLIP RING: .000100 MIN. NICKEL PER QQ-N-290 OVER  
 COPPER FLASH
- ELECTRICAL:  
 DIELECTRIC WITHSTANDING VOLTAGE: 800 VRMS  
 RECOMMENDED FREQUENCY RANGE: 0-3 GHz
- FOR USE WITH .141 DIA. SEMI-RIGID CABLE OR EQUIVALENT.
- FOR CABLING PROCEDURES USE CAP 5-03 WITH TRIMMING DIMENSIONS SHOWN.



RECOMMENDED TRIMMING DIMENSIONS

PER ASME Y14.5M-1994 UNLESS OTHERWISE SPECIFIED: DIMENSIONS ARE IN INCHES (MM)				<b>NORTHROP GRUMMAN</b>			
TOLERANCES: DECIMALS .XX ± .01 [0.254] .XXX ± .005 [0.127] ANGLES ± 2°				Winchester Electronics 400 Park Road Watertown, CT 06795			
SCALE: 6:1				TITLE			
<b>CUSTOMER DRAWING</b>				31 SERIES RIGHT ANGLE PLUG			
DRAWN JED	DATE 6/1/98	CHECKED JMC	DATE 6/1/98	A		312-510-1410G	SHT. OF REV. 1 1 A
APPROVED PRP	DATE 6/1/98	APPROVED PRP	DATE 6/1/98				