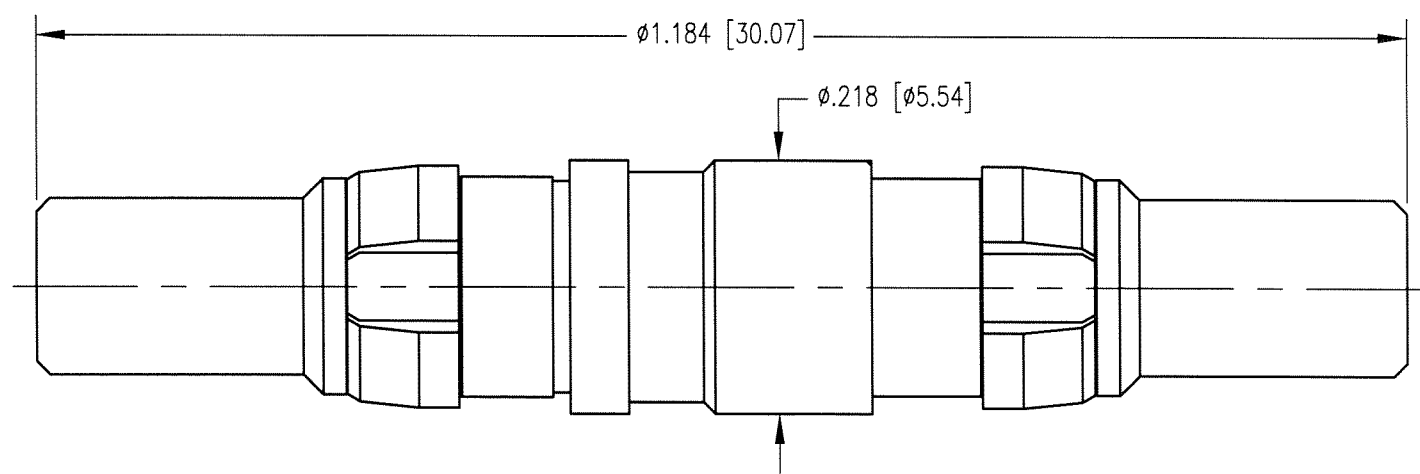


REV	DESCRIPTION	BY DATE	APPD
C	ECR 7046	MJF 10/4/01	[Signature]



NOTES:

1. MATERIALS:

- BODY AND CENTER CONTACT: COPPER ALLOY
- PLUG BODY: BRASS PER ASTM B16
- CLIP RING: BERYLLIUM COPPER PER ASTM B194
- INSULATOR: TEFLON PER ASTM D1710

2. FINISH:

- CLIP RING: .000100 MIN. NICKEL PER QQ-N-290  
OVER COPPER FLASH
- ALL OTHER METAL PARTS: .000030 MIN. GOLD PER MIL-G-45204 OVER  
.000050 MIN. NICKEL PER QQ-N-290

PER ASME Y14.5M-1994 UNLESS OTHERWISE SPECIFIED: DIMENSIONS ARE IN INCHES [MM]		<b>Litton</b> 400 Park Road Watertown, Connecticut 06795	
TOLERANCES: DECIMALS .xx ± .01/0.254 .xxx ± .005/0.127 ANGLES ± 2°		SCALE: 6:1	
<b>CUSTOMER DRAWING</b>		TITLE RDM, ADAPTER, PLUG-PLUG	
DRAWN MJF	DATE 10/4/01	CHECKED [Signature]	DATE [Signature]
APPROVED [Signature]	DATE 10/4/01	APPROVED [Signature]	DATE 10/4/01
A		200-200-0000G	SH. OF REV. 1 1 C