

SYNCHRONOUS DRAM MODULE

MT8LSDT264A, MT16LSDT464A
For the latest data sheet revisions, please refer to the Micron Web site: www.micron.com/mti/msp/html/datasheet.html

FEATURES

- PC100-compliant; includes CONCURRENT AUTO PRECHARGE
- JEDEC-standard 168-pin, dual in-line memory module (DIMM)
- Nonbuffered
- 16MB (2 Meg x 64) and 32MB (4 Meg x 64)
- Single +3.3V $\pm 0.3V$ power supply
- Fully synchronous; all signals registered on positive edge of system clock
- Internal pipelined operation; column address can be changed every clock cycle
- Internal banks for hiding row access/precharge
- Programmable burst lengths: 1, 2, 4, 8 or full page
- Auto Precharge and Auto Refresh Modes
- Self Refresh Mode
- 64ms, 4,096-cycle refresh
- LVTTTL-compatible inputs and outputs
- Serial presence-detect (SPD)

OPTIONS

- Package
168-pin DIMM (gold)
- Frequency/CAS Latency
100 MHz/CL = 3 (8ns SDRAMs)
66 MHz/CL = 2 (10ns SDRAMs)
- Component Revision Designator
Alpha character
- Printed Circuit Board Revision Designator
Numeric character

MARKING

G

-10B

-662

Factory Defined

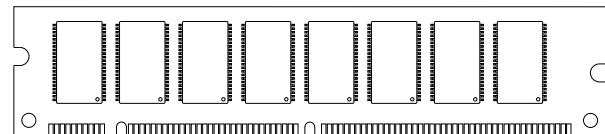
Factory Defined

KEY SDRAM COMPONENT TIMING PARAMETERS

MODULE MARKING	SPEED GRADE	CAS LATENCY	ACCESS TIME	SETUP TIME	HOLD TIME
-10B	-8B	3	6ns	2ns	1ns
-662	-10	2	9ns	3ns	1ns

PIN ASSIGNMENT (Front View)

168-Pin DIMM



PIN	SYMBOL	PIN	SYMBOL	PIN	SYMBOL	PIN	SYMBOL
1	V _{SS}	43	V _{SS}	85	V _{SS}	127	V _{SS}
2	DQ0	44	DNU	86	DQ32	128	CKE0
3	DQ1	45	S2#	87	DQ33	129	S3#*
4	DQ2	46	DQMB2	88	DQ34	130	DQMB6
5	DQ3	47	DQMB3	89	DQ35	131	DQMB7
6	V _{DD}	48	DNU	90	V _{DD}	132	RFU
7	DQ4	49	V _{DD}	91	DQ36	133	V _{DD}
8	DQ5	50	NC	92	DQ37	134	NC
9	DQ6	51	NC	93	DQ38	135	NC
10	DQ7	52	NC	94	DQ39	136	NC
11	DQ8	53	NC	95	DQ40	137	NC
12	V _{SS}	54	V _{SS}	96	V _{SS}	138	V _{SS}
13	DQ9	55	DQ16	97	DQ41	139	DQ48
14	DQ10	56	DQ17	98	DQ42	140	DQ49
15	DQ11	57	DQ18	99	DQ43	141	DQ50
16	DQ12	58	DQ19	100	DQ44	142	DQ51
17	DQ13	59	V _{DD}	101	DQ45	143	V _{DD}
18	V _{DD}	60	DQ20	102	V _{DD}	144	DQ52
19	DQ14	61	NC	103	DQ46	145	NC
20	DQ15	62	NC	104	DQ47	146	NC
21	NC	63	CKE1*	105	NC	147	NC
22	NC	64	V _{SS}	106	NC	148	V _{SS}
23	V _{SS}	65	DQ21	107	V _{SS}	149	DQ53
24	NC	66	DQ22	108	NC	150	DQ54
25	NC	67	DQ23	109	NC	151	DQ55
26	V _{DD}	68	V _{SS}	110	V _{DD}	152	V _{SS}
27	WE#	69	DQ24	111	CAS#	153	DQ56
28	DQMB0	70	DQ25	112	DQMB4	154	DQ57
29	DQMB1	71	DQ26	113	DQMB5	155	DQ58
30	SO#	72	DQ27	114	S1#*	156	DQ59
31	DNU	73	V _{DD}	115	RAS#	157	V _{DD}
32	V _{SS}	74	DQ28	116	V _{SS}	158	DQ60
33	A0	75	DQ29	117	A1	159	DQ61
34	A2	76	DQ30	118	A3	160	DQ62
35	A4	77	DQ31	119	A5	161	DQ63
36	A6	78	V _{SS}	120	A7	162	V _{SS}
37	A8	79	CK2	121	A9	163	CK3
38	A10	80	NC	122	BA0	164	NC
39	RFU	81	NC/WP**	123	RFU	165	SA0
40	V _{DD}	82	SDA	124	V _{DD}	166	SA1
41	V _{DD}	83	SCL	125	CK1	167	SA2
42	CK0	84	V _{DD}	126	RFU	168	V _{DD}

*32MB version only **-10B only

PART NUMBERS

PART NUMBER	CONFIGURATION	SYSTEM BUS SPEED
MT8LSDT264AG-10B_	2 Meg x 64	100 MHz
MT8LSDT264AG-662_	2 Meg x 64	66 MHz
MT16LSDT464AG-10B_	4 Meg x 64	100 MHz
MT16LSDT464AG-662_	4 Meg x 64	66 MHz

NOTE: All part numbers end with a two-place code (not shown), designating component and PCB revisions. Consult factory for current revision codes. Example:
MT8LSDT264AG-10BD2.

GENERAL DESCRIPTION

The MT8LSDT264A and MT16LSDT464A are high-speed CMOS, dynamic random-access, 16MB and 32MB memories organized in a x64 configuration. These modules use SDRAMs that are internally configured as dual memory arrays with a synchronous interface (all signals are registered on the positive edge of the clock signals CK0-CK3).

Read and write accesses to the SDRAM module are burst oriented; accesses start at a selected location and continue for a programmed number of locations in a programmed sequence. Accesses begin with the registration of an ACTIVE command, which is then followed by a READ or WRITE command. The address bits registered coincident with the ACTIVE command are used to select the bank and row to be accessed (BA0 selects the bank; A0-A10 select the row). The address bits registered coincident with the READ or WRITE command are used to select the starting column location for the burst access.

The modules provide for programmable READ or WRITE burst lengths of 1, 2, 4 or 8 locations, or full page, with a burst terminate option. An AUTO PRECHARGE function may be enabled to provide a self-timed row precharge that is initiated at the end of the burst sequence.

The modules use an internal pipelined architecture to achieve high-speed operation. This architecture is compatible with the $2n$ rule of prefetch architectures, but it also allows the column address to be changed on every clock cycle to achieve a high-speed, fully random access. Precharging one bank while accessing the alternate bank will hide the PRECHARGE cycles and provide seamless, high-speed, random-access operation.

The modules are designed to operate in 3.3V, low-power memory systems. An auto refresh mode is provided, along with a power-saving, power-down mode. All inputs and outputs are LVTTTL-compatible.

SDRAM modules offer substantial advances in DRAM operating performance, including the ability to synchronously burst data at a high data rate with automatic column-address generation, the ability to interleave between internal banks in order to hide precharge time and the capability to randomly change column addresses on each clock cycle during a burst access. For more information regarding the SDRAM operation, refer to the 16Mb: x4, x8 SDRAM data sheet.

SERIAL PRESENCE-DETECT OPERATION

This module incorporates serial presence-detect (SPD). The SPD function is implemented using a 2,048-bit EEPROM. This nonvolatile storage device contains 256 bytes. The first 128 bytes can be programmed by Micron to identify the module type and various SDRAM organizations and timing parameters. The remaining 128 bytes of storage are available for use by the customer. System READ/WRITE operations between the master (system logic) and the slave EEPROM device (DIMM) occur via a standard IIC bus using the DIMM's SCL (clock) and SDA (data) signals, together with SA(2:0), which provide eight unique DIMM/EEPROM addresses.

SPD CLOCK AND DATA CONVENTIONS

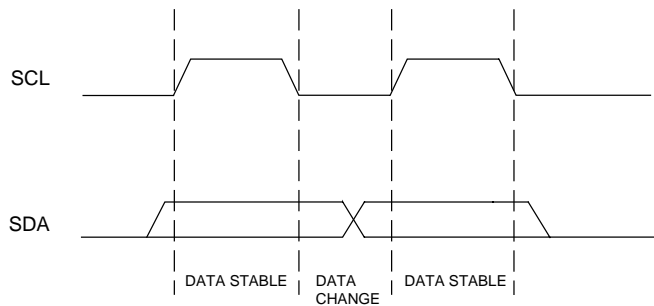
Data states on the SDA line can change only during SCL LOW. SDA state changes during SCL HIGH are reserved for indicating start and stop conditions (Figures 1 and 2).

SPD START CONDITION

All commands are preceded by the start condition, which is a HIGH-to-LOW transition of SDA when SCL is HIGH. The SPD device continuously monitors the SDA and SCL lines for the start condition and will not respond to any command until this condition has been met.

SPD STOP CONDITION

All communications are terminated by a stop condition, which is a LOW-to-HIGH transition of SDA when SCL is HIGH. The stop condition is also used to place the SPD device into standby power mode.

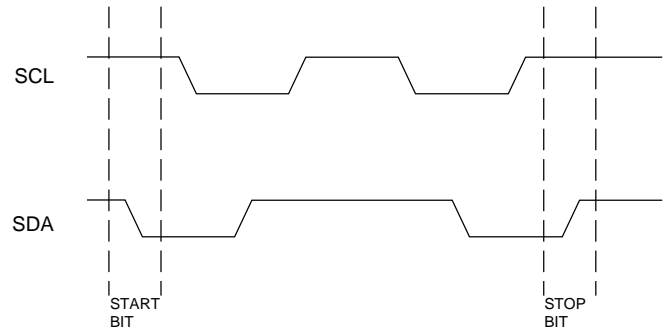


**Figure 1
DATA VALIDITY**

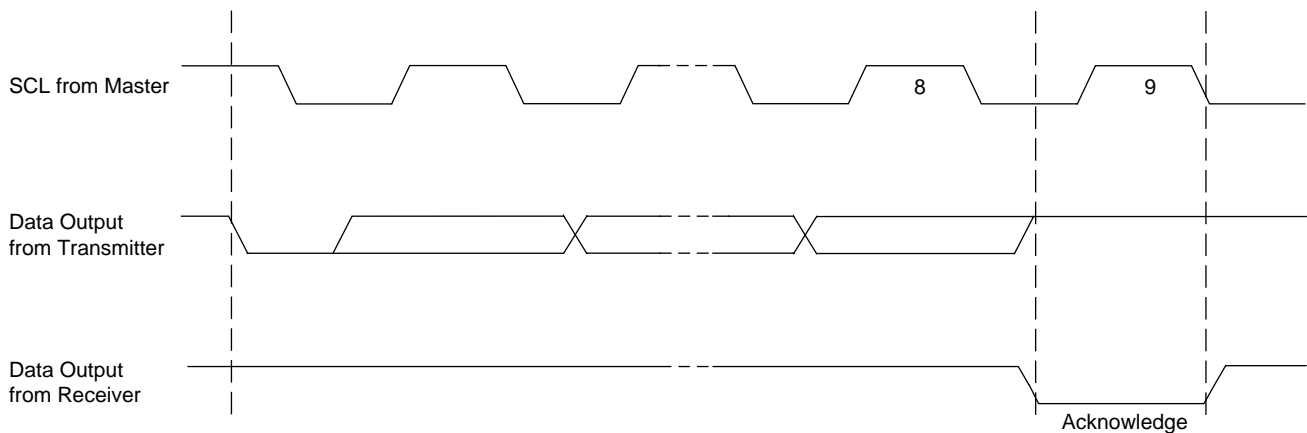
SPD ACKNOWLEDGE

Acknowledge is a software convention used to indicate successful data transfers. The transmitting device, either master or slave, will release the bus after transmitting eight bits. During the ninth clock cycle, the receiver will pull the SDA line LOW to acknowledge that it received the eight bits of data (Figure 3).

The SPD device will always respond with an acknowledge after recognition of a start condition and its slave address. If both the device and a WRITE operation have been selected, the SPD device will respond with an acknowledge after the receipt of each subsequent eight-bit word. In the read mode the SPD device will transmit eight bits of data, release the SDA line and monitor the line for an acknowledge. If an acknowledge is detected and no stop condition is generated by the master, the slave will continue to transmit data. If an acknowledge is not detected, the slave will terminate further data transmissions and await the stop condition to return to standby power mode.

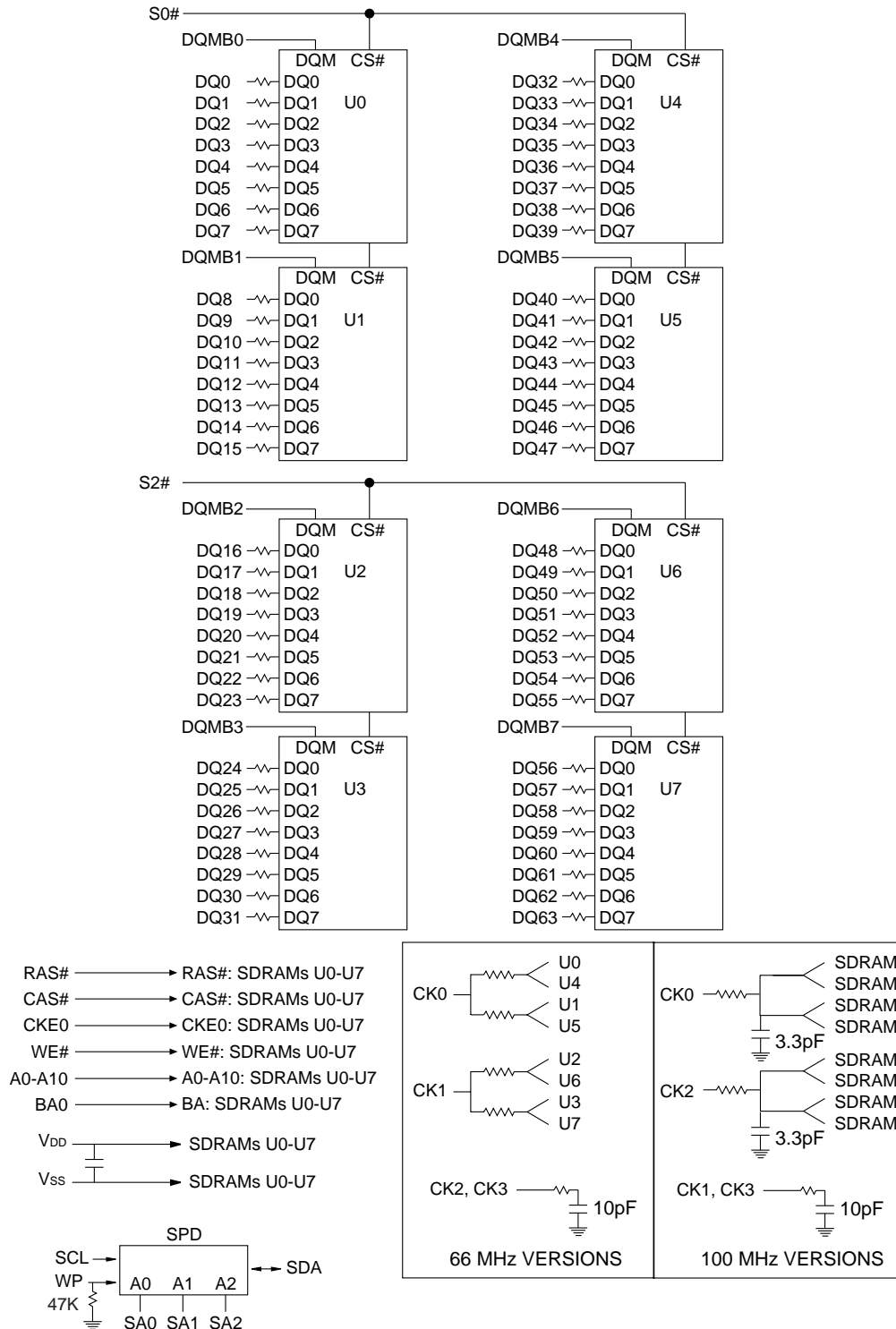


**Figure 2
DEFINITION OF START AND STOP**



**Figure 3
ACKNOWLEDGE RESPONSE FROM RECEIVER**

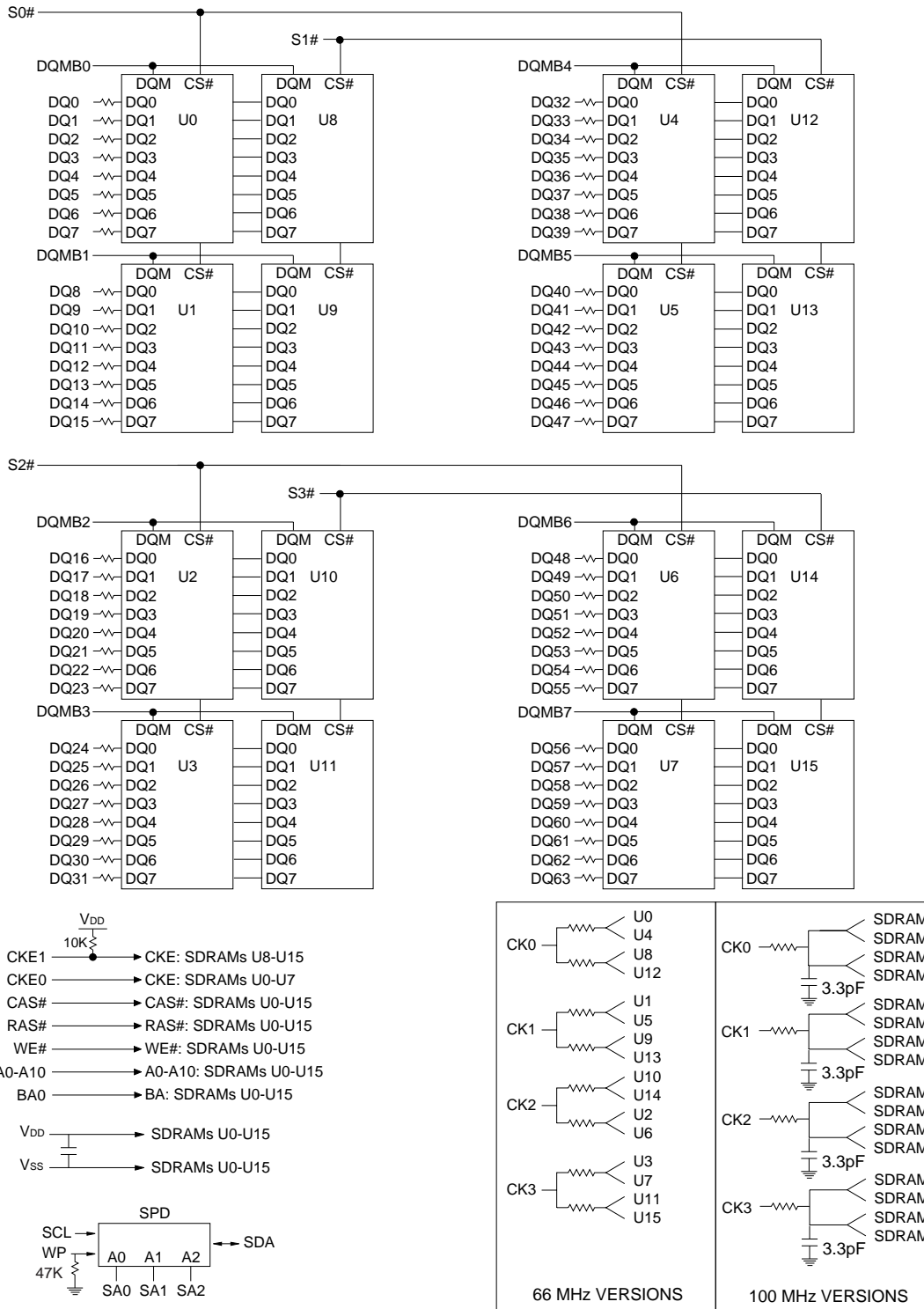
**FUNCTIONAL BLOCK DIAGRAM
MT8LSDT264A (16MB)**



NOTE: All resistor values are 10 ohms.

U0-U7 = MT48LC2M8A1TG SDRAMs

FUNCTIONAL BLOCK DIAGRAM MT16LSDT464A (32MB)



NOTE: All resistor values are 10 ohms unless otherwise specified.

U0-U15 = MT48LC2M8A1TG SDRAMs

PIN DESCRIPTIONS

PIN NUMBERS	SYMBOL	TYPE	DESCRIPTION
115, 111, 27	RAS#, CAS#, WE#	Input	Command Inputs: RAS#, CAS# and WE# (along with S0#-S3#) define the command being entered.
42, 125, 79, 163	CK0-CK3	Input	Clock: CK0-CK3 are driven by the system clock. All SDRAM input signals are sampled on the positive edge of CK. CK also increments the internal burst counter and controls the output registers.
128, 63	CKE0, CKE1	Input	Clock Enable: CKE0-CKE1 activate (HIGH) and deactivate (LOW) the CK0-CK3 signals. Deactivating the clock provides POWER-DOWN and SELF REFRESH operation (all banks idle) or CLOCK SUSPEND operation (burst access in progress). CKE0-CKE1 are synchronous except after the device enters power-down and self refresh modes, where CKE0-CKE1 become asynchronous until after exiting the same mode. The input buffers, including CK0-CK3, are disabled during power-down and self refresh modes, providing low standby power.
30, 114, 45, 129	S0#-S3#	Input	Chip Select: S0#-S3# enable (registered LOW) and disable (registered HIGH) the command decoder. All commands are masked when S0#-S3# are registered HIGH. S0#-S3# are considered part of the command code.
28-29, 46-47, 112-113, 130-131	DQMB0-DQMB7	Input	Input/Output Mask: DQMB is an input mask signal for write accesses and an output enable signal for read accesses. Input data is masked when DQMB is sampled HIGH during a WRITE cycle. The output buffers are placed in a High-Z state (two-clock latency) when DQMB is sampled HIGH during a READ cycle.
122	BA0	Input	Bank Address: BA0 defines to which bank the ACTIVE, READ, WRITE or PRECHARGE command is being applied. BA0 is also used to program the 12th bit of the Mode Register.
33-38, 117-121	A0-A10	Input	Address Inputs: A0-A10 are sampled during the ACTIVE command (row-address A0-A10) and READ/WRITE command (column-address A0-A8, with A10 defining AUTO PRECHARGE) to select one location out of the memory array in the respective bank. A10 is sampled during a PRECHARGE command to determine if both banks are to be precharged (A10 HIGH). The address inputs also provide the op-code during a LOAD MODE REGISTER command.
2-5, 7-11, 13-17, 19-20, 55-58, 60, 65-67, 69-72, 74-77, 86-89, 91-95, 97-101, 103, 104, 139-142, 144, 149-151, 153-156, 158-161	DQ0-DQ63	Input/Output	Data I/O: Data bus.

PIN DESCRIPTIONS (continued)

PIN NUMBERS	SYMBOL	TYPE	DESCRIPTION
6, 18, 26, 40, 41, 49, 59, 73, 84, 90, 102, 110, 124, 133, 143, 157, 168	V _{DD}	Supply	Power Supply: +3.3V ±0.3V.
1, 12, 23, 32, 43, 54, 64, 68, 78, 85, 96, 107, 116, 127, 138, 148, 152, 162	V _{SS}	Supply	Ground.
81	WP	Input	Write Protect: Serial presence-detect hardware write protect. Applies to -10B version only.
82	SDA	Input/Output	Serial Presence-Detect Data: SDA is a bidirectional pin used to transfer addresses and data into and out of the presence-detect portion of the module.
83	SCL	Input	Serial Clock for Presence-Detect: SCL is used to synchronize the presence-detect data transfer to and from the module.
165-167	SA0-SA2	Input	Presence-Detect Address Inputs: These pins are used to configure the presence-detect device.
39, 123, 126, 132	RFU	–	Reserved for Future Use: These pins should be left unconnected.
31, 44, 48	DNU	–	Do Not Use: These pins are not connected on these modules but are assigned pins on the compatible DRAM version.

SERIAL PRESENCE-DETECT MATRIX

BYTE	DESCRIPTION	ENTRY (VERSION)	SYMBOL	BIT7	BIT6	BIT5	BIT4	BIT3	BIT2	BIT1	BIT0	HEX
0	NUMBER OF BYTES USED BY MICRON	128		1	0	0	0	0	0	0	0	80
1	TOTAL NUMBER OF SPD MEMORY BYTES	256		0	0	0	0	1	0	0	0	08
2	MEMORY TYPE	SDRAM		0	0	0	0	0	1	0	0	04
3	NUMBER OF ROW ADDRESSES	11		0	0	0	0	1	0	1	1	0B
4	NUMBER OF COLUMN ADDRESSES	9		0	0	0	0	1	0	0	1	09
5	NUMBER OF BANKS	1 (16MB) 2 (32MB)		0	0	0	0	0	0	0	1	01 02
6	MODULE DATA WIDTH	64		0	1	0	0	0	0	0	0	40
7	MODULE DATA WIDTH (continued)	0		0	0	0	0	0	0	0	0	00
8	MODULE VOLTAGE INTERFACE LEVELS	LVTTTL		0	0	0	0	0	0	0	1	01
9	SDRAM CYCLE TIME (CAS LATENCY = 3)	8 (-10B) 10 (-662)	^t CK	1	0	0	0	0	0	0	0	80 A0
10	SDRAM ACCESS FROM CLOCK (CAS LATENCY = 3)	6 (-10B) 7.5 (-662)	^t AC	0	1	1	0	0	0	0	0	60 75
11	MODULE CONFIGURATION TYPE	NONPARITY		0	0	0	0	0	0	0	0	00
12	REFRESH RATE/TYPE	15.6μs/SELF		1	0	0	0	0	0	0	0	80
13	SDRAM WIDTH (PRIMARY SDRAM)	8		0	0	0	0	1	0	0	0	08
14	ERROR-CHECKING SDRAM DATA WIDTH	NONE		0	0	0	0	0	0	0	0	00
15	MINIMUM CLOCK DELAY FROM BACK-TO-BACK RANDOM COLUMN ADDRESSES	1	^t CCD	0	0	0	0	0	0	0	1	01
16	BURST LENGTHS SUPPORTED	1, 2, 4, 8 PAGE		1	0	0	0	1	1	1	1	8F
17	NUMBER OF BANKS ON SDRAM DEVICE	2		0	0	0	0	0	0	1	0	02
18	CAS LATENCIES SUPPORTED	1, 2, 3		0	0	0	0	0	1	1	1	07
19	CS LATENCY	0		0	0	0	0	0	0	0	1	01
20	WE LATENCY	0		0	0	0	0	0	0	0	1	01
21	SDRAM MODULE ATTRIBUTES	NONBUFFERED		0	0	0	0	0	0	0	0	00
22	SDRAM DEVICE ATTRIBUTES: GENERAL	0E		0	0	0	0	1	1	1	0	0E
23	SDRAM CYCLE TIME (CAS LATENCY = 2)	12 (-10B) 15 (-662)	^t CK	1	1	0	0	0	0	0	0	C0 F0
24	SDRAM ACCESS FROM CLK (CAS LATENCY = 2)	9	^t AC	1	0	0	1	0	0	0	0	90
25	SDRAM CYCLE TIME (CAS LATENCY = 1)	30	^t CK	0	1	1	1	1	0	0	0	78
26	SDRAM ACCESS FROM CLK (CAS LATENCY = 1)	27	^t AC	0	1	1	0	1	1	0	0	6C
27	MINIMUM ROW PRECHARGE TIME	24 (-10B) 30 (-662)	^t RP	0	0	0	1	1	0	0	0	18 1E
28	MINIMUM ROW ACTIVE TO ROW ACTIVE	20	^t RRD	0	0	0	1	0	1	0	0	14
29	MINIMUM RAS# TO CAS# DELAY	20 (-10B) 30 (-662)	^t RCD	0	0	0	1	0	1	0	0	14 1E
30	MINIMUM RAS# PULSE WIDTH	50 (-10B) 60 (-662)	^t RAS	0	0	1	1	0	0	1	0	32 3C
31	MODULE BANK DENSITY	16MB		0	0	0	0	0	1	0	0	04
32	COMMAND AND ADDRESS SETUP TIME	2 (-10B) 0 (-662)	^t AS, ^t CMS	0	0	1	0	0	0	0	0	20 00

NOTE: 1. "1"/"0": Serial Data, "driven to HIGH"/"driven to LOW."

SERIAL PRESENCE-DETECT MATRIX (continued)

BYTE	DESCRIPTION	ENTRY (VERSION)	SYMBOL	BIT7	BIT6	BIT5	BIT4	BIT3	BIT2	BIT1	BIT0	HEX
33	COMMAND AND ADDRESS HOLD TIME	1 (-10B) 0 (-662)	^t AH, ^t CMH	0 0	0 0	0 0	1 0	0 0	0 0	0 0	0 0	10 00
34	DATA SIGNAL INPUT SETUP TIME	2 (-10B) 0 (-662)	^t DS	0 0	0 0	1 0	0 0	0 0	0 0	0 0	0 0	20 00
35	DATA SIGNAL INPUT HOLD TIME	1 (-10B) 0 (-662)	^t DH	0 0	0 0	0 0	1 0	0 0	0 0	0 0	0 0	10 00
36-61	RESERVED			0	0	0	0	0	0	0	0	00
62	SPD REVISION	REV. 1.2 (-10B) REV. 1.0 (-662)		0 0	0 0	0 0	1 0	0 0	0 0	1 0	0 1	12 01
63	CHECKSUM FOR BYTES 0-62	16MB (-10B) 16MB (-662) 32MB (-10B) 32MB (-662)		0 0 0 0	0 0 0 0	0 0 0 0	0 1 1 1	1 1 0 0	1 0 0 0	1 0 0 0	1 0 0 1	0F 1D 10 1E
64	MANUFACTURER'S JEDEC ID CODE	MICRON		0	0	1	0	1	1	0	0	2C
65-71	MANUFACTURER'S JEDEC ID CODE (CONT.)			1	1	1	1	1	1	1	1	FF
72	MANUFACTURING LOCATION			0 0 0 0 0 0	0 0 0 0 0 0	0 0 0 0 0 0	0 0 0 0 0 0	0 0 0 1 1 1	0 0 0 1 0 1	0 1 1 0 0 1	1 0 1 0 1 0	01 02 03 04 05 06
73-90	MODULE PART NUMBER (ASCII)			x	x	x	x	x	x	x	x	xx
91	PCB IDENTIFICATION CODE	1 2 3 4		0 0 0 0	0 0 0 0	0 0 0 0	0 0 0 0	0 0 0 0	0 0 0 1	0 1 1 0	1 0 1 0	01 02 03 04
92	IDENTIFICATION CODE (CONT.)	0		0	0	0	0	0	0	0	0	00
93	YEAR OF MANUFACTURE IN BCD			x	x	x	x	x	x	x	x	xx
94	WEEK OF MANUFACTURE IN BCD			x	x	x	x	x	x	x	x	xx
95-98	MODULE SERIAL NUMBER			x	x	x	x	x	x	x	x	xx
99-125	MANUFACTURER-SPECIFIC DATA (RSVD)			-	-	-	-	-	-	-	-	-
126	SYSTEM FREQUENCY	100 MHz (-10B) 66 MHz (-662)		0 0	1 1	1 1	0 0	0 0	1 1	0 1	0 0	64 66
127	SDRAM COMPONENT & CLOCK DETAIL	16MB (-10B) 32MB (-10B) (-662)		1 1 0	0 1 0	1 1 0	0 1 0	1 1 0	1 1 1	0 0 1	1 1 0	AD FD 06

NOTE:

1. "1"/"0": Serial Data, "driven to HIGH"/"driven to LOW."
2. x = Variable Data.

COMMANDS

Truth Table 1 provides a general reference of available commands. For a more detailed description of commands and operations, refer to the 16Mb: x4, x8 SDRAM data sheet.

TRUTH TABLE 1 – Commands and DQMB Operation

(Notes: 1)

NAME (FUNCTION)	CS#	RAS#	CAS#	WE#	DQMB	ADDR	DQs	NOTES
COMMAND INHIBIT (NOP)	H	X	X	X	X	X	X	
NO OPERATION (NOP)	L	H	H	H	X	X	X	
ACTIVE (Select bank and activate row)	L	L	H	H	X	Bank/Row	X	3
READ (Select bank and column, and start READ burst)	L	H	L	H	X	Bank/Col	X	4
WRITE (Select bank and column, and start WRITE burst)	L	H	L	L	X	Bank/Col	Valid	4
BURST TERMINATE	L	H	H	L	X	X	Active	
PRECHARGE (Deactivate row in bank or banks)	L	L	H	L	X	Code	X	5
AUTO REFRESH or SELF REFRESH (Enter self refresh mode)	L	L	L	H	X	X	X	6, 7
LOAD MODE REGISTER	L	L	L	L	X	Op-code	X	2
Write Enable/Output Enable	–	–	–	–	L	–	Active	8
Write Inhibit/Output High-Z	–	–	–	–	H	–	High-Z	8

- NOTE:**
1. CKE is HIGH for all commands shown except SELF REFRESH.
 2. A0-A10 and BA0 define the op-code written to the Mode Register.
 3. A0-A10 provide row address, and BA0 determines which bank is made active (BA0 LOW = Bank 0; BA0 HIGH = Bank 1).
 4. A0-A8 provide column address; A10 HIGH enables the auto precharge feature (nonpersistent), while A10 LOW disables the auto precharge feature; BA0 determines which bank is being read from or written to (BA0 LOW = Bank 0; BA0 HIGH = Bank 1).
 5. A10 LOW: BA0 determines which bank is being precharged (BA0 LOW = Bank 0; BA0 HIGH = Bank 1). A10 HIGH: both banks are precharged and BA0 is "Don't Care."
 6. This command is AUTO REFRESH if CKE is HIGH, SELF REFRESH if CKE is LOW.
 7. Internal refresh counter controls row addressing; all inputs and I/Os are "Don't Care" except for CKE.
 8. Activates or deactivates the DQs during WRITES (zero-clock delay) and READS (two-clock delay).

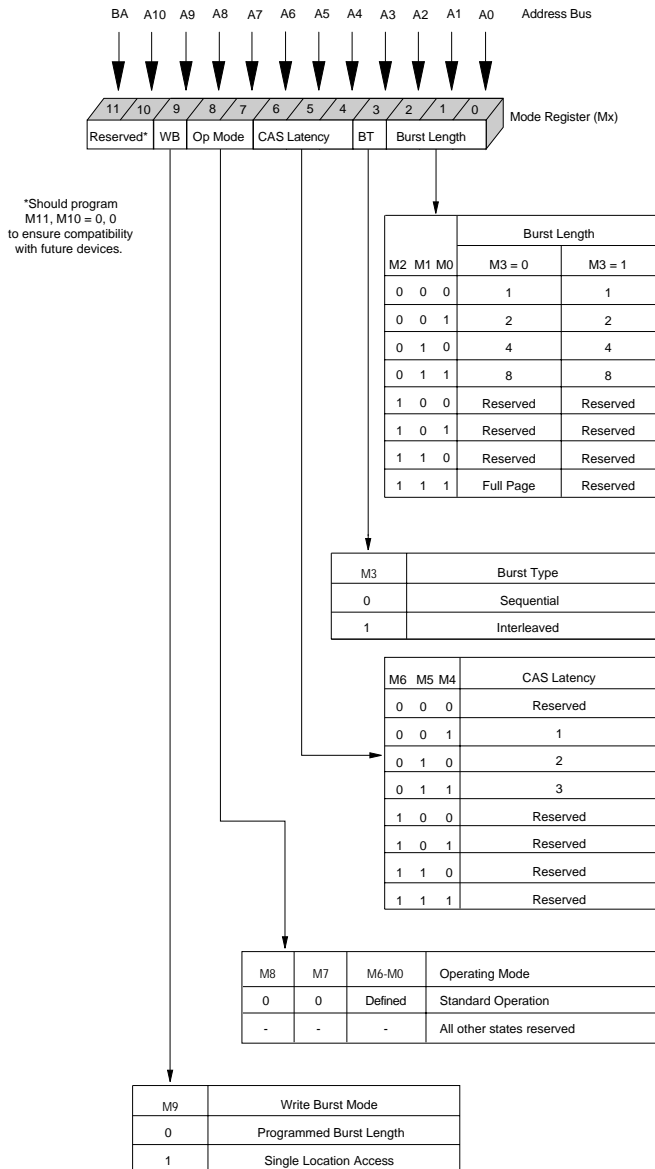


Figure 1
MODE REGISTER DEFINITION

Table 1
BURST DEFINITION

Burst Length	Starting Column Address	Order of Accesses Within a Burst	
		Type = Sequential	Type = Interleaved
2	A0		
	0	0-1	0-1
	1	1-0	1-0
4	A1 A0		
	0 0	0-1-2-3	0-1-2-3
	0 1	1-2-3-0	1-0-3-2
	1 0	2-3-0-1	2-3-0-1
	1 1	3-0-1-2	3-2-1-0
8	A2 A1 A0		
	0 0 0	0-1-2-3-4-5-6-7	0-1-2-3-4-5-6-7
	0 0 1	1-2-3-4-5-6-7-0	1-0-3-2-5-4-7-6
	0 1 0	2-3-4-5-6-7-0-1	2-3-0-1-6-7-4-5
	0 1 1	3-4-5-6-7-0-1-2	3-2-1-0-7-6-5-4
	1 0 0	4-5-6-7-0-1-2-3	4-5-6-7-0-1-2-3
	1 0 1	5-6-7-0-1-2-3-4	5-4-7-6-1-0-3-2
	1 1 0	6-7-0-1-2-3-4-5	6-7-4-5-2-3-0-1
1 1 1	7-0-1-2-3-4-5-6	7-6-5-4-3-2-1-0	
Full Page (512)	n = A0-A8 (location 0-511)	Cn, Cn + 1, Cn + 2 Cn + 3, Cn + 4... ... Cn - 1, Cn...	Not Supported

- NOTE:**
- For a burst length of two, A1-A8 select the block-of-two burst; A0 selects the starting column within the block.
 - For a burst length of four, A2-A8 select the block-of-four burst; A0-A1 select the starting column within the block.
 - For a burst length of eight, A3-A8 select the block-of-eight burst; A0-A2 select the starting column within the block.
 - For a full-page burst, the full row is selected, and A0-A8 select the starting column.
 - Whenever a boundary of the block is reached within a given sequence above, the following access wraps within the block.
 - For a burst length of one, A0-A8 select the unique column to be accessed, and Mode Register bit M3 is ignored.

ABSOLUTE MAXIMUM RATINGS*

 Voltage on V_{DD} Supply Relative to V_{SS} -1V to +4.6V

Voltage on Inputs, NC or I/O Pins

 Relative to V_{SS} -1V to +4.6V

 Operating Temperature, T_A (ambient) 0°C to +70°C

Storage Temperature (plastic) -55°C to +125°C

Power Dissipation 8W

*Stresses greater than those listed under “Absolute Maximum Ratings” may cause permanent damage to the device. This is a stress rating only, and functional operation of the device at these or any other conditions above those indicated in the operational sections of this specification is not implied. Exposure to absolute maximum rating conditions for extended periods may affect reliability.

DC ELECTRICAL CHARACTERISTICS AND OPERATING CONDITIONS

 (Notes: 1, 6) (V_{DD} = +3.3V ±0.3V)

PARAMETER/CONDITION	SYMBOL	MIN	MAX	UNITS	NOTES	
SUPPLY VOLTAGE	V _{DD}	3	3.6	V		
INPUT HIGH VOLTAGE: Logic 1; All inputs	V _{IH}	2	V _{DD} + 0.3	V	25	
INPUT LOW VOLTAGE: Logic 0; All inputs	V _{IL}	-0.5	0.8	V	25	
INPUT LEAKAGE CURRENT: Any input 0V ≤ V _{IN} ≤ V _{DD} (All other pins not under test = 0V)	DQMB0-DQMB7	I _{I1}	-10	10	μA	22
	CK0-CK3, S0#-S3#	I _{I2}	-20	20	μA	
	CKE0-CKE1	I _{I3}	-40	40	μA	
	RAS#, CAS#, A0-A10, BA0, WE#	I _{I4}	-80	80	μA	22
OUTPUT LEAKAGE CURRENT: DQs are disabled; 0V ≤ V _{OUT} ≤ V _{DD}	DQ0-DQ63	I _{OZ}	-10	10	μA	22
OUTPUT LEVELS: Output High Voltage (I _{OUT} = -2mA) Output Low Voltage (I _{OUT} = 2mA)	V _{OH}	2.4	–	V		
	V _{OL}	–	0.4	V		

I_{CC} SPECIFICATIONS AND CONDITIONS

 (Notes: 1, 6, 11, 13) (V_{DD} = +3.3V ±0.3V)

PARAMETER/CONDITION	SYMBOL	SIZE	MAX		UNITS	NOTES
			-10B	-662		
OPERATING CURRENT: Active Mode; Burst = 2; READ or WRITE; ^t RC = ^t RC (MIN); CAS latency = 3; ^t CK = 15ns	I _{CC1}	16MB	840	720	mA	3, 18, 19
		32MB	1,200	1,040		
STANDBY CURRENT: Power-Down Mode; ^t CK = 15ns (10ns for -10B); CKE ≤ V _{IL} (MAX); All banks idle	I _{CC2}	16MB	24	16	mA	
		32MB	48	32		
STANDBY CURRENT: Active Mode; S0#-S3# = HIGH; ^t CK = 15ns (10ns for -10B); CKE = HIGH; All banks active after ^t RCD met; No accesses in progress	I _{CC3}	16MB	360	320	mA	3, 12, 19
		32MB	720	640		
OPERATING CURRENT: Burst Mode; Continuous burst; READ or WRITE; ^t CK = 15ns (10ns for -10B); All banks active; CAS latency = 3	I _{CC4}	16MB	1,000	680	mA	3, 18, 19
		32MB	1,360	1,000		
AUTO REFRESH CURRENT: ^t RC = ^t RC (MIN); CAS latency = 3; CKE = HIGH; S0#-S3# = HIGH; ^t CK = 15ns (10ns for -10B)	I _{CC5}	16MB	760	680	mA	3, 12, 18, 19
		32MB	1,120	1,000		
SELF REFRESH CURRENT: CKE ≤ 0.2V	I _{CC6}	16MB	8	16	mA	4
		32MB	16	32		

CAPACITANCE

PARAMETER	SYMBOL	16MB		32MB		UNITS	NOTES
		MIN	MAX	MIN	MAX		
Input Capacitance: A0-A10, BA0, RAS#, CAS#, WE#	C _{I1}	25	45	45	88	pF	2
Input Capacitance: S0#-S3#, CK0-CK3	C _{I2}	15	25	15	25	pF	2
Input Capacitance: CKE0, CKE1	C _{I3}	25	45	25	45	pF	2
Input Capacitance: DQMB0#-DQMB7#	C _{I4}	4	8	7	14	pF	2
Input Capacitance: SCL, SA0-SA2	C _{I5}	–	6	–	6	pF	2
Input/Output Capacitance: DQ0-DQ63, SDA	C _{I0}	6	10	12	15	pF	2

SDRAM COMPONENT* AC ELECTRICAL CHARACTERISTICS

(Notes: 5, 6, 7, 8, 9, 11)

AC CHARACTERISTICS		SYMBOL	-10B		-662		UNITS	NOTES
PARAMETER			MIN	MAX	MIN	MAX		
Access time from CLK (positive edge)	CL = 3	t _{AC}		6		7.5	ns	
	CL = 2	t _{AC}		9		9	ns	
	CL = 1	t _{AC}		27		27	ns	
Address hold time		t _{AH}	1		1		ns	
Address setup time		t _{AS}	2		3		ns	
CLK high-level width		t _{CH}	3		3.5		ns	
CLK low-level width		t _{CL}	3		3.5		ns	
Clock cycle time	CL = 3	t _{CK}	8		10		ns	26
	CL = 2	t _{CK}	12		15		ns	26
	CL = 1	t _{CK}	30		30		ns	26
CKE hold time		t _{CKH}	1		1		ns	
CKE setup time		t _{CKS}	2		3		ns	
CS#, RAS#, CAS#, WE#, DQM hold time		t _{CMH}	1		1		ns	
CS#, RAS#, CAS#, WE#, DQM setup time		t _{CMS}	2		3		ns	
Data-in hold time		t _{DH}	1		1		ns	
Data-in setup time		t _{DS}	2		3		ns	
Data-out high-impedance time	CL = 3	t _{HZ}		6		8	ns	10
	CL = 2	t _{HZ}		7		10	ns	10
	CL = 1	t _{HZ}		15		15	ns	10
Data-out low-impedance time		t _{LZ}	1		2		ns	
Data-out hold time		t _{OH}	3		3		ns	
ACTIVE to PRECHARGE command period		t _{RAS}	50	120,000	60	120,000	ns	
AUTO REFRESH, ACTIVE command period		t _{RC}	80		90		ns	
ACTIVE to READ or WRITE delay		t _{RCD}	20		30		ns	
Refresh period (4,096 cycles)		t _{REF}		64		64	ms	
PRECHARGE command period		t _{RP}	24		30		ns	21
ACTIVE bank A to ACTIVE bank B command period		t _{RRD}	20		20		ns	
Transition time		t _T	0.3	1.2	1	1.2	ns	7
WRITE recovery time		t _{WR}	1		1		t _{CK}	27
			10		10		ns	28
Exit SELF REFRESH to ACTIVE command		t _{XSR}	80		90		ns	20

*Specifications for the SDRAM components used on the module.

AC FUNCTIONAL CHARACTERISTICS

(Notes: 5, 6, 7, 8, 9, 11)

PARAMETER	SYMBOL	-10B	-662	UNITS	NOTES	
READ/WRITE command to READ/WRITE command	^t CCD	1	1	^t CK	17	
CKE to clock disable or power-down entry mode	^t CKED	1	1	^t CK	14	
CKE to clock enable or power-down exit setup mode	^t PED	1	1	^t CK	14	
DQM to input data delay	^t DQD	0	0	^t CK	17	
DQM to data mask during WRITES	^t DQM	0	0	^t CK	17	
DQM to data high-impedance during READs	^t DQZ	2	2	^t CK	17	
WRITE command to input data delay	^t DWD	0	0	^t CK	17	
Data-in to ACTIVE command	^t DAL	4	3	^t CK	15, 21	
Data-in to PRECHARGE command	^t DPL	1	1	^t CK	16, 24	
Last data-in to PRECHARGE command	^t RDL	1	1	^t CK	16	
Last data-in to burst STOP command	^t BDL	1	1	^t CK	17, 24	
Last data-in to new READ/WRITE command	^t CDL	1	1	^t CK	17	
LOAD MODE REGISTER command to ACTIVE or REFRESH command	^t MRD	2	2	^t CK	29	
Data-out to high-impedance from PRECHARGE command	CL = 3	^t ROH	3	3	^t CK	17
	CL = 2	^t ROH	2	2	^t CK	17
	CL = 1	^t ROH	1	1	^t CK	17

SDRAM COMPONENT* ELECTRICAL TIMING CHARACTERISTICS BETWEEN -8 SPEED OPTIONS

(Notes: 5, 6, 8, 9, 11)

AC CHARACTERISTICS			-8E		-8D		-8C		-8B		-8A			
PARAMETER		SYMBOL	MIN	MAX	MIN	MAX	MIN	MAX	MIN	MAX	MIN	MAX	UNITS	NOTES
Access time from CLK (pos. edge)	CL = 3	^t AC		6		6		6		6		6	ns	30
	CL = 2	^t AC		6		7		9		9		9	ns	30
	CL = 1	^t AC		27		27		27		27		27	ns	30
Clock cycle time	CL = 3	^t CK	8		8		8		8		8		ns	30
	CL = 2	^t CK	10		10		12		12		12		ns	30
	CL = 1	^t CK	30		30		30		30		30		ns	30
ACTIVE to READ or WRITE delay		^t RCD	20		20		20		20		24		ns	30
PRECHARGE command period		^t RP	20		20		20		24		24		ns	30
AUTO REFRESH, ACTIVE command period		^t RC	70		70		70		80		80		ns	30
WRITE recovery time		^t WR	2		2		2		2		2		^t CK	21
100 MHz Speed Reference (CL- ^t RCD- ^t RP)			2-2-2		2-2-2		3-2-2		3-2-3		3-3-3		CLKs	

*Specifications for the SDRAM components used on the module.

SERIAL PRESENCE-DETECT EEPROM DC OPERATING CONDITIONS
(Notes: 1) ($V_{DD} = +3.3V \pm 0.3V$)

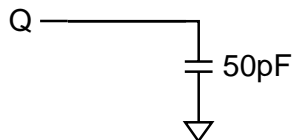
PARAMETER/CONDITION	SYMBOL	MIN	MAX	UNITS	NOTES
SUPPLY VOLTAGE	V_{DD}	3	3.6	V	
INPUT HIGH VOLTAGE: Logic 1; All inputs	V_{IH}	$V_{DD} \times 0.7$	$V_{DD} + 0.5$	V	
INPUT LOW VOLTAGE: Logic 0; All inputs	V_{IL}	-1	$V_{DD} \times 0.3$	V	
OUTPUT LOW VOLTAGE: $I_{OUT} = 3mA$	V_{OL}	-	0.4	V	
INPUT LEAKAGE CURRENT: $V_{IN} = GND$ to V_{DD}	I_{LI}	-	10	μA	
OUTPUT LEAKAGE CURRENT: $V_{OUT} = GND$ to V_{DD}	I_{LO}	-	10	μA	
STANDBY CURRENT: SCL = SDA = $V_{DD} - 0.3V$; All other inputs = GND or $3.3V + 10\%$	I_{SB}	-	30	μA	
POWER SUPPLY CURRENT: SCL clock frequency = 100 KHz	I_{CC}	-	2	mA	

SERIAL PRESENCE-DETECT EEPROM AC OPERATING CONDITIONS
(Notes: 1) ($V_{DD} = +3.3V \pm 0.3V$)

PARAMETER/CONDITION	SYMBOL	MIN	MAX	UNITS	NOTES
SCL LOW to SDA data-out valid	t_{AA}	0.3	3.5	μs	
Time the bus must be free before a new transition can start	t_{BUF}	4.7		μs	
Data-out hold time	t_{DH}	300		ns	
SDA and SCL fall time	t_F		300	ns	
Data-in hold time	$t_{HD:DAT}$	0		μs	
Start condition hold time	$t_{HD:STA}$	4		μs	
Clock HIGH period	t_{HIGH}	4		μs	
Noise suppression time constant at SCL, SDA inputs	t_I		100	ns	
Clock LOW period	t_{LOW}	4.7		μs	
SDA and SCL rise time	t_R		1	μs	
SCL clock frequency	t_{SCL}		100	KHz	
Data-in setup time	$t_{SU:DAT}$	250		ns	
Start condition setup time	$t_{SU:STA}$	4.7		μs	
Stop condition setup time	$t_{SU:STO}$	4.7		μs	
WRITE cycle time	t_{WRC}		10	ms	23

NOTES

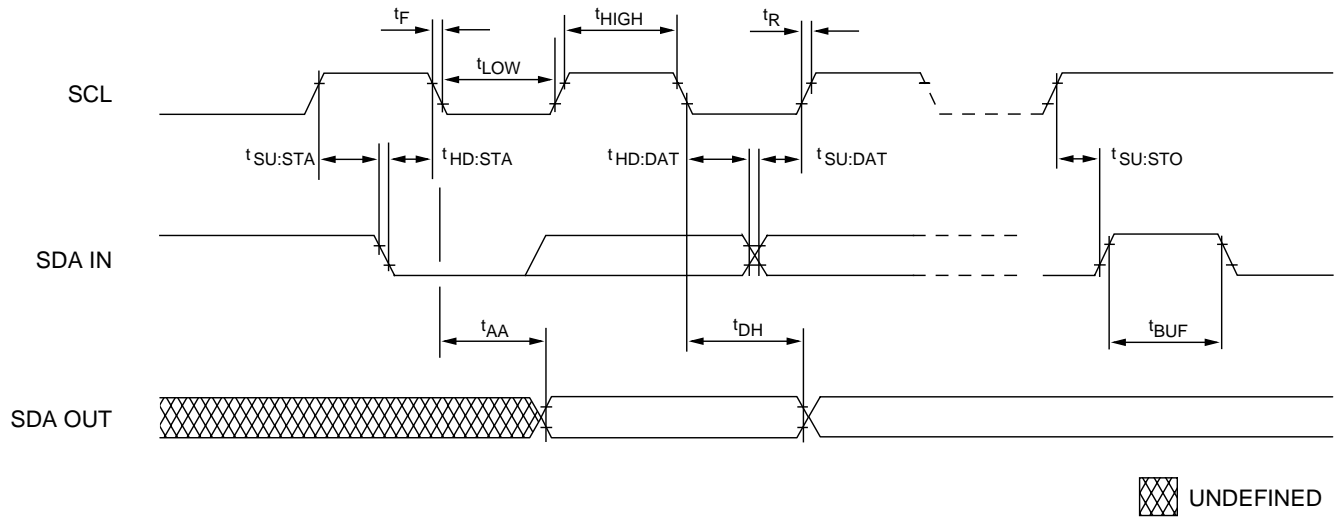
1. All voltages referenced to V_{SS} .
2. This parameter is sampled. $V_{DD} = +3.3V$; $f = 1\text{ MHz}$.
3. I_{CC} is dependent on output loading and cycle rates. Specified values are obtained with minimum cycle time and the outputs open.
4. Enables on-chip refresh and address counters.
5. The minimum specifications are used only to indicate cycle time at which proper operation over the full temperature range ($0^{\circ}\text{C} \leq T_A \leq 70^{\circ}\text{C}$) is ensured.
6. An initial pause of $100\mu\text{s}$ is required after power-up, followed by two AUTO REFRESH commands, before proper device operation is ensured. The two AUTO REFRESH command wake-ups should be repeated any time the t_{REF} refresh requirement is exceeded.
7. AC characteristics assume $t_T = 1\text{ ns}$.
8. In addition to meeting the transition rate specification, the clock and CKE must transit between V_{IH} and V_{IL} (or between V_{IL} and V_{IH}) in a monotonic manner.
9. Outputs measured at $1.5V$ with equivalent load:



10. t_{HZ} defines the time at which the output achieves the open circuit condition; it is not a reference to V_{OH} or V_{OL} . The last valid data element will meet t_{OH} before going High-Z.
11. AC timing tests have $V_{IL} = 0V$ and $V_{IH} = 3V$, with timing referenced to $1.5V$ crossover point.
12. Other input signals are allowed to transition no more than once in any 30 ns period (20 ns on $-10B$) and are otherwise at valid V_{IH} or V_{IL} levels.
13. I_{CC} specifications are tested after the device is properly initialized.
14. Timing actually specified by t_{CKS} ; clock(s) specified as a reference only at minimum cycle rate.

15. Timing actually specified by t_{WR} plus t_{RP} ; clock(s) specified as a reference only at minimum cycle rate.
16. Timing actually specified by t_{WR} .
17. Required clocks are specified by JEDEC functionality and are not dependent on any timing parameter.
18. The I_{CC} current will decrease as the CAS latency is reduced. This is because the maximum cycle rate is slower as the CAS latency is reduced.
19. Address transitions an average of one transition every 30 ns (20 ns on $-10B$).
20. CLK must be toggled a minimum of two times during this period.
21. Based on $t_{CK} = 100\text{ MHz}$ for $-10B$ and 66 MHz for -662 .
22. 16 MB module values will be half of those shown.
23. The SPD EEPROM WRITE cycle time (t_{WRC}) is the time from a valid stop condition of a write sequence to the end of the EEPROM internal erase/program cycle. During the WRITE cycle, the EEPROM bus interface circuit is disabled, SDA remains HIGH due to the pull-up resistor, and the EEPROM does not respond to its slave address.
24. It is recommended that the DRAM controller use two clocks for t_{WR} to support future design requirements.
25. V_{IH} overshoot: $V_{IH}(\text{MAX}) = V_{DD} + 2V$ for a pulse width $\leq 10\text{ ns}$, and the pulse width cannot be greater than one third of the cycle rate. V_{IL} undershoot: $V_{IL}(\text{MIN}) = -2V$ for a pulse width $\leq 10\text{ ns}$, and the pulse width cannot be greater than one third of the cycle rate.
26. 16 MB module values will be half of those shown.
27. Auto precharge mode only.
28. Precharge mode only.
29. JEDEC and PC100 specify three clocks.
30. These five parameters vary between speed grades and define the differences between the -8 SDRAM speeds: $-8A$, $-8B$, $-8C$, $-8D$ and $-8E$. All other -8 timing parameters remain constant.

SPD EEPROM



**SERIAL PRESENCE-DETECT EEPROM
TIMING PARAMETERS**

SYMBOL	MIN	MAX	UNITS
t_{AA}	0.3	3.5	μs
t_{BUF}	4.7		μs
t_{DH}	300		ns
t_F		300	ns
$t_{HD:DAT}$	0		μs
$t_{HD:STA}$	4		μs

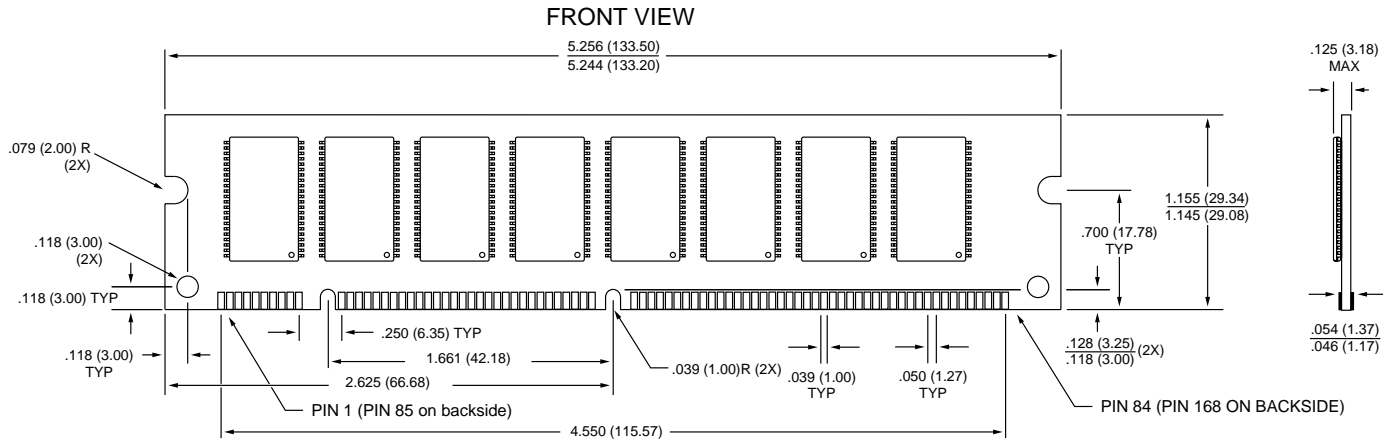
SYMBOL	MIN	MAX	UNITS
t_{HIGH}	4		μs
t_{LOW}	4.7		μs
t_R		1	μs
$t_{SU:DAT}$	250		ns
$t_{SU:STA}$	4.7		μs
$t_{SU:STO}$	4.7		μs

OBSOLETE

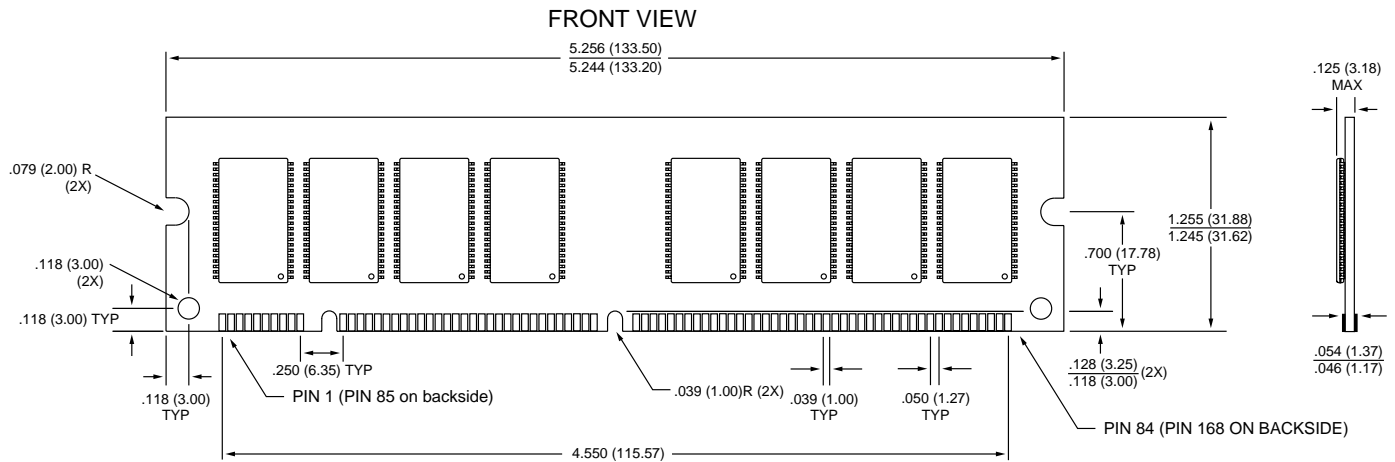


2, 4 MEG x 64
SDRAM DIMMs

168-PIN DIMM DF-17 (16MB, 66 MHz)



168-PIN DIMM DF-29 (16MB, 100 MHz)



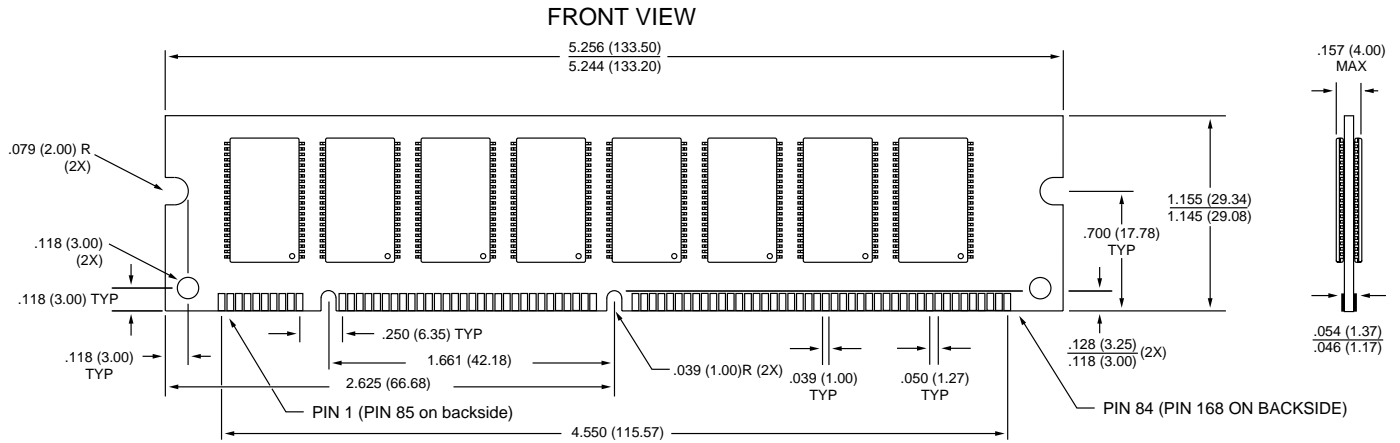
NOTE: 1. All dimensions in inches (millimeters) $\frac{\text{MAX}}{\text{MIN}}$ or typical where noted.

OBSOLETE

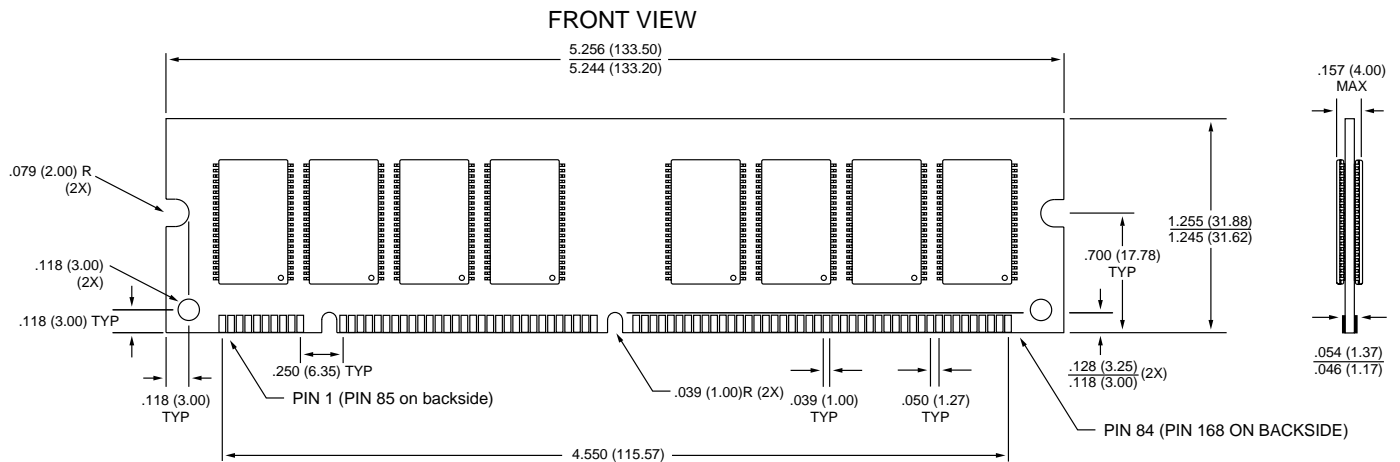


2, 4 MEG x 64
SDRAM DIMMs

168-PIN DIMM
DF-18 (32MB, 66 MHz)



168-PIN DIMM
DF-28 (32MB, 100 MHz)



NOTE: 1. All dimensions in inches (millimeters) $\frac{\text{MAX}}{\text{MIN}}$ or typical where noted.