

## Features

- IEEE 802.3af Ethernet compatible
- Designed for AMD IC manufacturers
- Fully integrated for adapter, hub and motherboard applications
- RoHS compliant\*

## Applications

- LAN (Local Area Network)
- Ethernet

# PT61017PEL LAN 10/100 Base-Tx

### Electrical Specifications @ 25 °C

Turns Ratio  
 TX ± 3% .....1CT\*:1CT\*  
 RX ± 3% .....1CT\*:1CT\*

Inductance  
 Pin 1-3, 6-8 ..350 µH min. @ 100 KHz,  
 0.1 Vrms, 8 mA DC Bias

DCR  
 Pin 1-3, 6-8 ..... 0.6 Ω max.  
 Pin 9-11, 14-16..... 1.1 Ω max.

Insertion Loss  
 0.1-100 MHz .....1.1 dB max. (TX/RX)

Return Loss  
 30 MHz..... -18 dB min. (TX/RX)  
 60 MHz..... -12 dB min. (TX/RX)  
 100 MHz..... -10 dB min. (TX/RX)

Common Mode Rejection  
 30 MHz..... -40 dB Min. (TX/RX)  
 50 MHz..... -40 dB Min. (TX/RX)  
 100 MHz..... -40 dB Min. (TX/RX)

Crosstalk  
 30 MHz..... -38 dB Min. (TX to RX)  
 62 MHz..... -38 dB Min. (TX to RX)  
 100 MHz..... -38 dB Min. (TX to RX)

Hipot  
 1 mA, 2 sec. ....1500 VAC (PRI-SEC)

Operating Temperature ....0 °C to +70 °C

\*CT: Center tap

### Material

Termination..... Tin

### Packaging Specifications

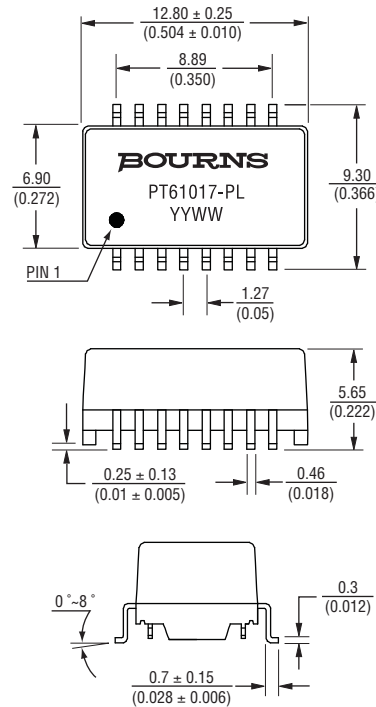
Tape & Reel ..... 600 pcs./reel

### How To Order

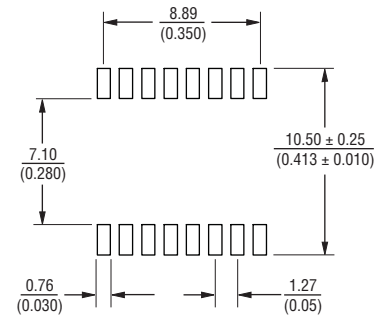
**PT61017 P E L**

Model	_____
Construction	_____
P = Potted	
Packaging	_____
E = Tape and Reel (600 pcs./reel)	
Termination	_____
L = Tin only (RoHS Compliant)	

### Product Dimensions



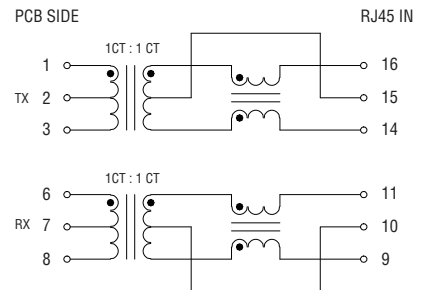
### Recommended Layout



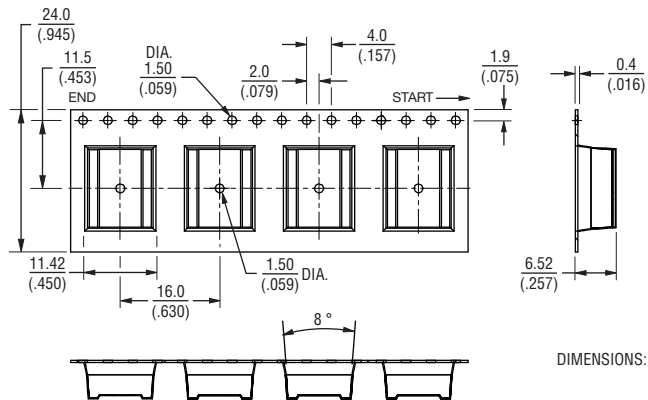
DIMENSIONS:  $\frac{\text{MM}}{\text{(INCHES)}}$

TOLERANCES:  $\frac{0.05}{(0.002)}$  UNLESS OTHERWISE NOTED

### Electrical Schematic



### Packaging Specifications



DIMENSIONS:  $\frac{\text{MM}}{\text{(INCHES)}}$

TOLERANCES:  $\frac{0.10}{(0.004)}$

USER DIRECTION OF FEED  
 600 PCS. PER REEL