

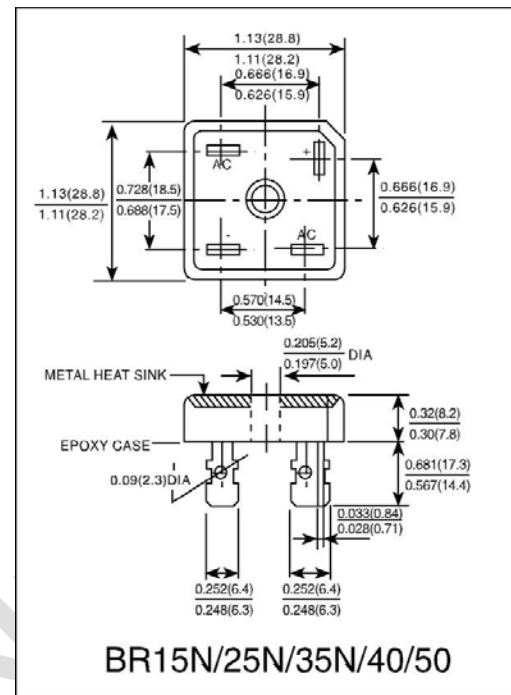
### SINGLE-PHASE BRIDGE RECTIFIER

#### FEATURES

- Low cost
- This series is UL recognized under component index, file number E127707
- High forward surge current capability
- Integrally molded heatsink provide very low thermal resistance.
- High isolation voltage from case to lugs
- High temperature soldering guaranteed: 260°C/10 second, at 5 lbs. (2.3kg) tension.

#### MECHANICAL DATA

- Case: Molded plastic body, Suffix "N" for thinner type.
- Terminal: Plated 0.25" (6.35mm) lug.
- Polarity: Polarity symbols marked on case.
- Mounting: Thru hole for #10 screw, 20 in.- lbs. Torqute Max.
- Weight: 0.55 ounce, 15.6 gram(KBPC35N)



#### MAXIMUM RATINGS AND ELECTRICAL CHARACTERISTICS

- Ratings at 25°C ambient temperature unless otherwise specified
- Single phase, half wave, 60Hz, resistive or inductive load.
- For capacitive load derate current by 20%

	SYMBOLS	KBPC 35005N	KBPC 3501N	KBPC 3502N	KBPC 3504N	KBPC 3506N	KBPC 3508N	KBPC 3510N	UNIT
Maximum Repetitive Peak Reverse Voltage	$V_{RRM}$	50	100	200	400	600	800	1000	Volts
Maximum RMS Voltage	$V_{RMS}$	35	70	140	280	420	560	700	Volts
Maximum DC Blocking Voltage	$V_{DC}$	50	100	200	400	600	800	1000	Volts
Maximum Average Forward Rectified Output Current, at $T_C = 50^\circ\text{C}$ (Note 1)	$I_{(AV)}$	35							Amps
Peak Forward Surge Current 8.3ms single half sine - wave superimposed on rated load (JEDEC method )	$I_{FSM}$	400							Amps
Rating for Fusing ( $t < 8.3\text{ms}$ )	$I^2t$	664							$\text{A}^2\text{s}$
Maximum Instantaneous Forward Voltage Drop per bridge element at 17.5A	$V_F$	1.1							Volts
Maximum DC Reverse Current at rated DC blocking voltage per element	$T_A = 25^\circ\text{C}$	$I_R$							$\mu\text{A}$
	$T_A = 100^\circ\text{C}$	1.0							mA
Isolation Voltage from case to lugs.	$V_{ISO}$	2500							$V_{AC}$
Typical Thermal Resistance (Note 1,2)	$R_{\theta JC}$	2.0							$^\circ\text{C}/\text{W}$
Operating Temperature Range	$T_J$	(-65 to +150)							$^\circ\text{C}$
Storage Temperature Range	$T_{STG}$	(-65 to +150)							

1. Unit mounted on 9" X 3.5" X 4.6" (23cm X 9cm X 11.8cm)Al. finned Plate.

2. Bolt down on heat-sink with silicon thermal compound between bridge and mounting surface for maximum heat transfer efficiency with # 10 screw.

FIG.1-DERATING CURVE FOR  
OUTPUT RECTIFIED CURRENT

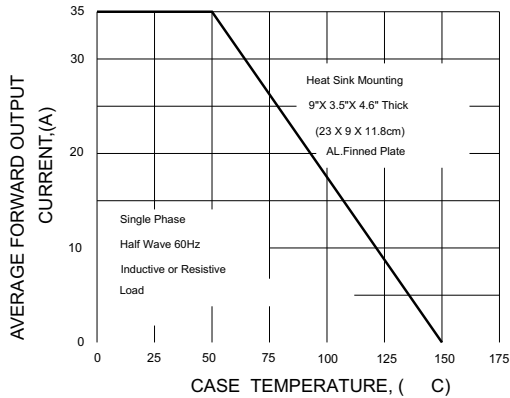


FIG.2-MAXIMUM NON-REPETITIVE PEAK  
FORWARD SURGE CURRENT PER ELEMENT

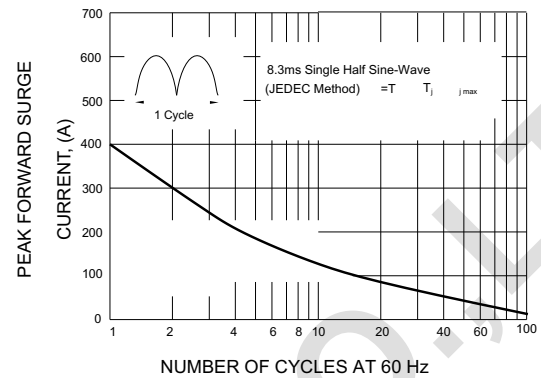


FIG.3-TYPICAL FORWARD CHARACTERISTICS  
PER BRIDGE ELEMENT

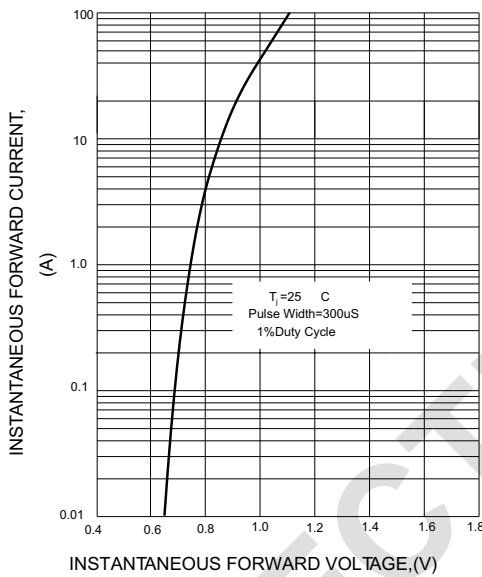


FIG.4-TYPICAL REVERSE CHARACTERISTICS  
PER BRIDGE ELEMENT

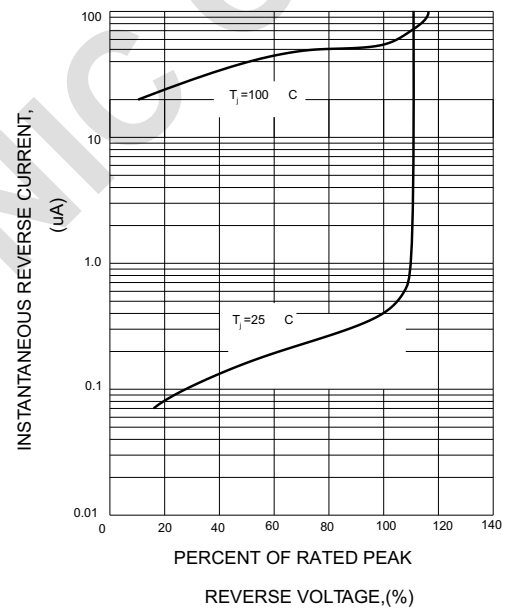


FIG.5-TYPICAL JUNCTION CAPACITANCE  
PER BRIDGE ELEMENT

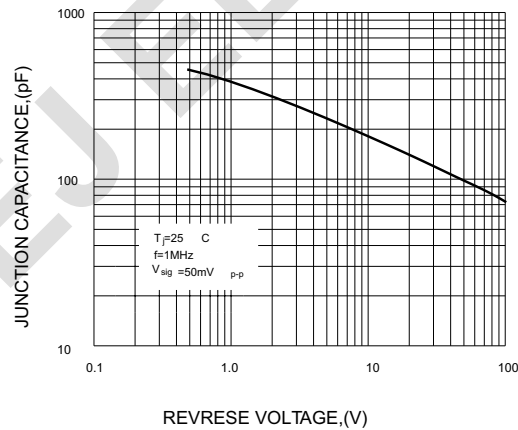


FIG.6-MAXIMUM POWER DISSIPATION

