



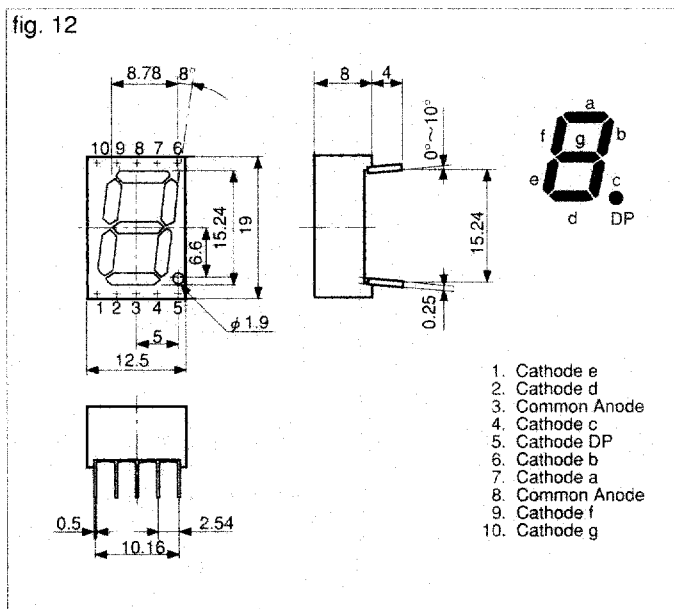
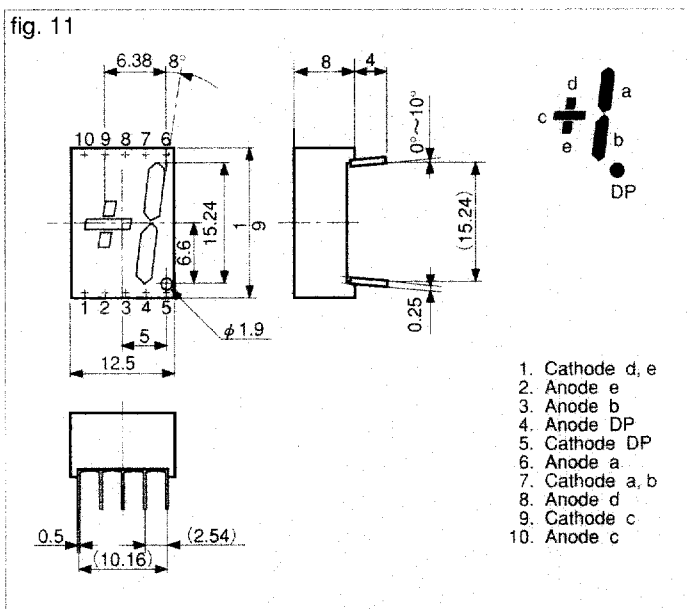
▼15mm TYPE

Ta=25°C

Case Size (W×H)	Shape	Type No.		Emitted Color	Luminous Intensity Iv						Fig.	
		Anode Common	Cathode Common		Rank A		Rank B		Rank C			
					MIN.	TYP.	MIN.	TYP.	MIN.	TYP.		IF
12.5 × 17.0	Arrow feather type	NSR161/163		Red	3	6	6	12	12	15	20	11
		NSG161/163		Pure Green	1	2	2	4	—	—	20	
		NSG161P/163P		Green	1	2	2	4	—	—	20	
		NSY161/163		Yellow	2	4	4	8	—	—	20	
		NSA161/163		Orange	2	4	4	8	—	—	20	
12.5 × 19.0	Arrow feather type	NAR161/163	NKR161/163	Red	3	6	6	12	12	15	20	12
		NAG161/163	NKG161/163	Pure Green	1	2	2	4	—	—	20	
		NAG161P/163P	NKG161P/163P	Green	1	2	2	4	—	—	20	
		NAY161/163	NKY161/163	Yellow	2	4	4	8	—	—	20	
		NAA161/163	NKA161/163	Orange	2	4	4	8	—	—	20	
25.2 × 19.0	Arrow feather type	NAR261/263	NKR261/263	Red	3	6	6	1	12	15	20	13
		NAG261/263	NKG261/263	Pure Green	1	2	2	2	—	—	20	
		NAG261P/263P	NKG261P/263P	Green	1	2	2	4	—	—	20	
		NAY261/263	NKY261/263	Yellow	2	4	4	4	—	—	20	
		NAA261/263	NKA261/263	Orange	2	4	4	8	—	—	20	

▼DIMENSIONS Unit : mm

Tolerance: ±0.25 mm



● Common cathode types shown in fig.12 and 13 have a reverse polarity.

