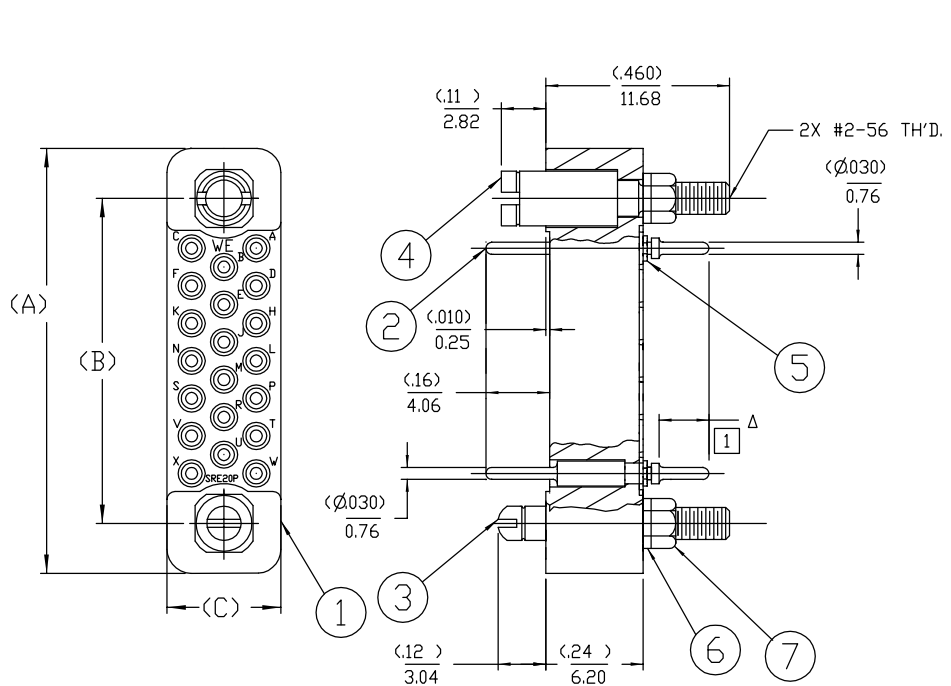


REV	DESCRIPTION	BY DATE	APPD
A	RELEASED PER ER21670	02/09/10	PSN VEH

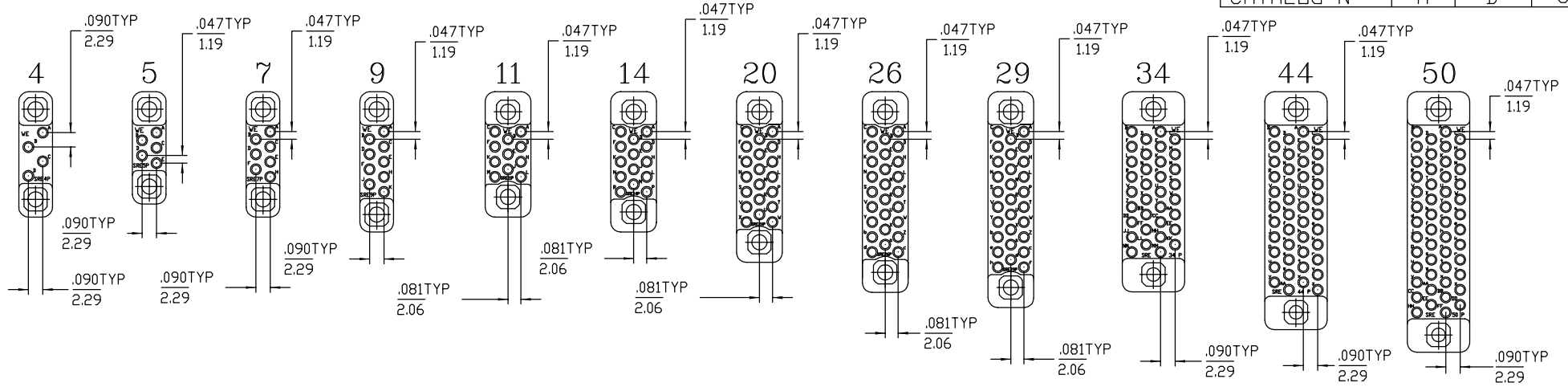


- 1 MOLDING, MALE - DIALLYL PHTHALATE, TYPE SDG-F
- 2 CONTACT, PIN - BRASS, GOLD OVER COPPER
- 3 GUIDE PIN - STAINLESS STEEL, PASSIVATING DIP
- 4 GUIDE SOCKET - STAINLESS STEEL, PASSIVATING DIP
- 5 CLIP SPRING - BERYLLIUM COPPER, GOLD OVER COPPER
- 6 LOCK WASHER - STAINLESS STEEL, PASSIVATING DIP
- 7 HEX NUT - STAINLESS STEEL, PASSIVATING DIP

SRE20PD5NSS5570 SHOWN

Δ	LENGTH OF DIP SOLDER PIN
2	.06
3	.09
4	.13
5	.16
6	.19
7	.22
8	.25
9	.28
10	.31

SRE	A	B	C
SRE50PDΔNSS5570	1.63	1.408	.39
SRE44PDΔNSS5570	1.48	1.267	.39
SRE34PDΔNSS5570	1.25	1.032	.39
SRE29PDΔNSS5570	1.34	1.094	.28
SRE26PDΔNSS5570	1.25	1.000	.28
SRE20PDΔNSS5570	1.06	.814	.28
SRE14PDΔNSS5570	.88	.625	.28
SRE11PDΔNSS5570	.78	.531	.28
SRE 9PDΔNSS5570	.88	.656	.21
SRE 7PDΔNSS5570	.78	.562	.21
SRE 5PDΔNSS5570	.70	.482	.21
SRE 4PDΔNSS5570	.78	.562	.21
CATALOG N°	A	B	C



FACES OF THE SRE MOLDINGS

MALE CONTACT NO. 4 THRU 50

NOTE:

- 1 Δ = CONTACT TAIL LENGTHS IN INCREMENTS OF 1/32, WHEN MEASURED FROM CONTACT SHOULDER TO CONTACT END ARE AVAILABLE. (SEE CHART)
2. HARDWARE TO BE SHIPPED UNASSEMBLED IN BULK PACKAGING.

PER ANSI Y14.5M-1982 UNLESS OTHERWISE SPECIFIED: DIMENSIONS ARE IN INCHES OR INCHES / MM DIMENSIONS ARE FOR REFERENCE ONLY TOLERANCES: .XX ± DECIMALS, .XXX ± ANGLES ± SCALE: 4:1		 Winchester Electronics 62 Barnes Industrial Road, North Wallingford, CT 06492	
<b>CUSTOMER DRAWING</b>		TITLE COMPOSITE OUTLINE ASSEMBLY SRE**PD NSS	
DRAWN CWB	DATE 05/22/08	CHECKED WPM	DATE 02/09/10
APPROVED VBH	DATE 05/22/08	APPROVED BB	DATE 02/09/10
C		26491	SHEET 1 OF 1
			REV. A