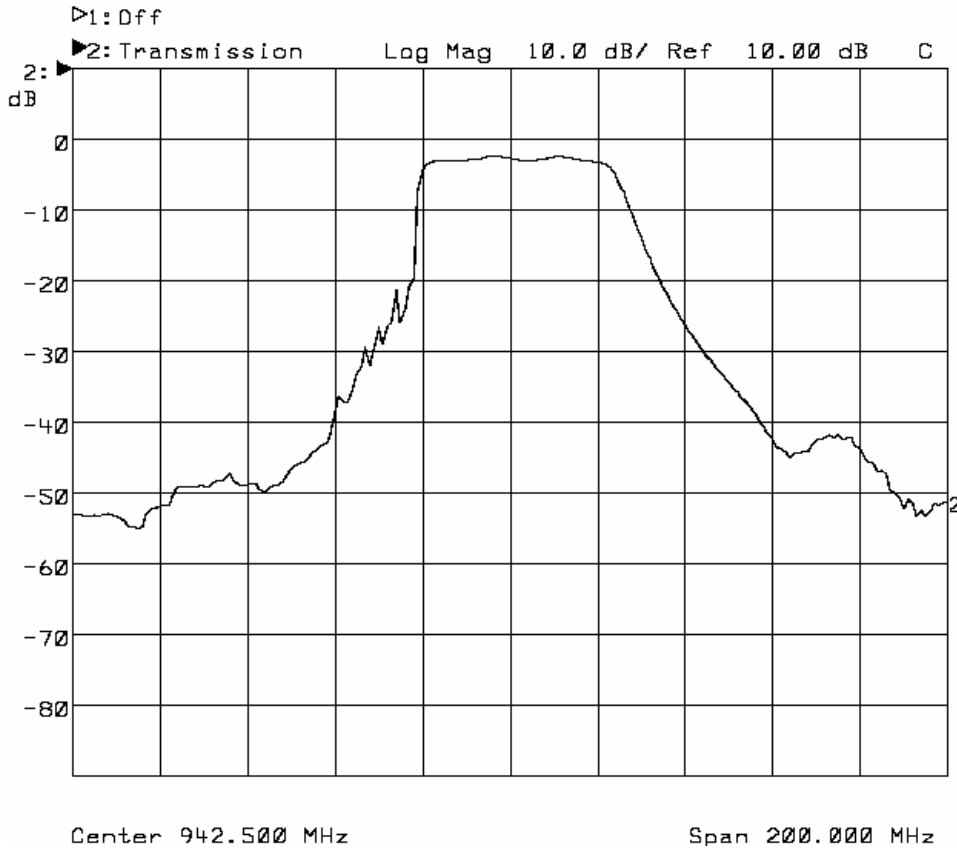




## DESCRIPTION

- 942.5 MHz SAW bandpass filter with 35 MHz bandwidth for cellular telephone applications.
- 3 x 3 mm ceramic LCC package.
- RoHS compliant.

## TYPICAL PERFORMANCE





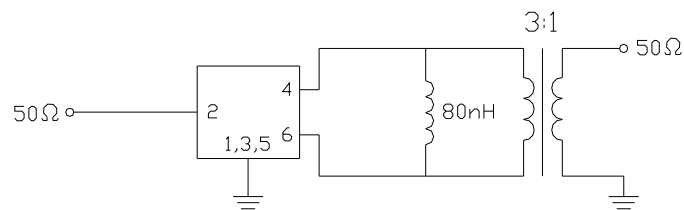
## SPECIFICATION

Parameter	Min	Typ	Max	Units
Center Frequency (Fc)	-	942.5	-	MHz
PassBand Width	-	35	-	MHz
Insertion Loss (925–960 MHz)	-	-	3.8	dB
Ripple (925 –960 MHz)			1.4	dB
Attenuation (0-880 MHz)	50	-	-	dB
Attenuation (880-905 MHz)	28	-	-	dB
Attenuation (905-915 MHz)	18	-	-	dB
Attenuation (980-1050 MHz)	20	-	-	dB
Attenuation (1050-1500 MHz)	50	-	-	dB
Attenuation (1500-2130 MHz)	45	-	-	dB
Attenuation (2130-3000 MHz)	40	-	-	dB
Terminating Impedance Input Output	50 Ohm Unbalanced 150 Ohm//80nH Balanced			

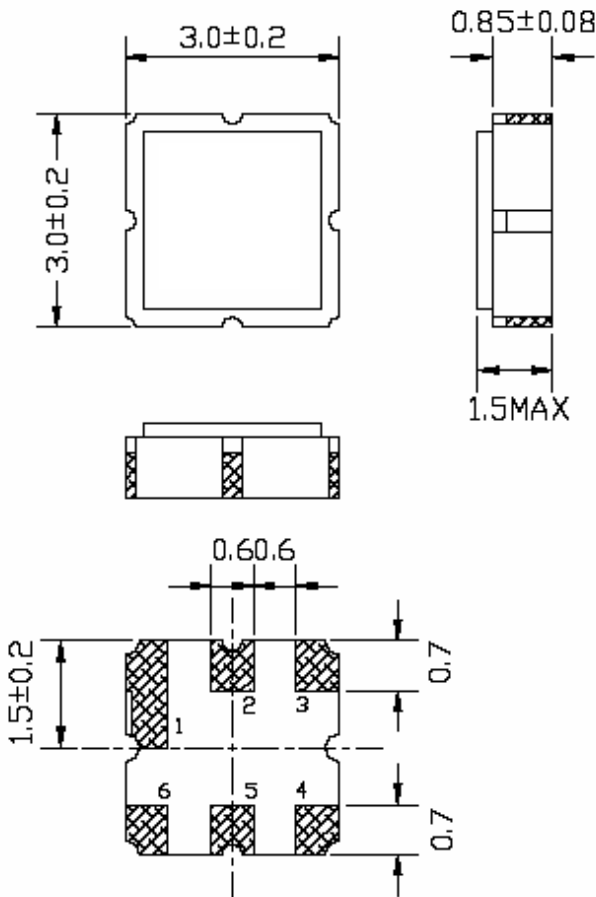
## MAXIMUM RATINGS

Parameter	Min	Max	Units
Storage Temperature Range	-40	+85	°C
Operating Temperature Range	-10	+75	°C
Input Power Level	-	18	dBm
Permissive Voltage	-	5	V DC

## MATCHING CIRCUIT



**PACKAGE OUTLINE**

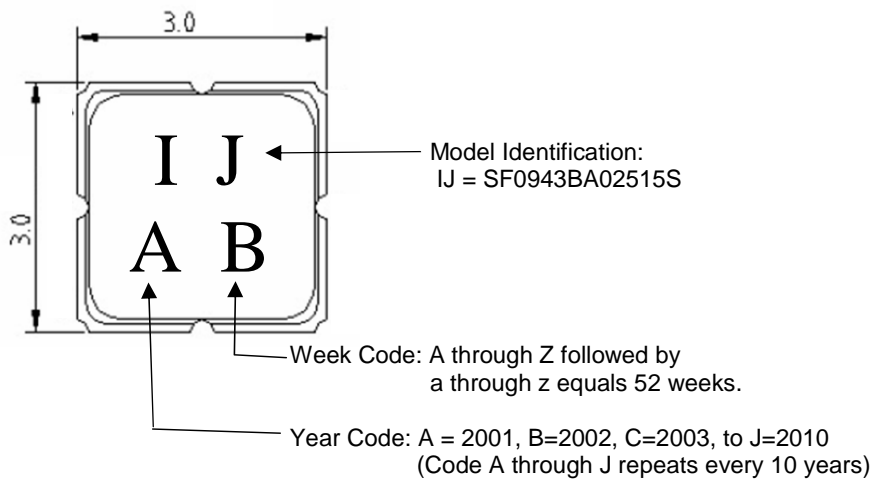


Pad Configuration:	
2	Input, Unbalanced
4, 6	Output, Balanced
All Others	Case Ground

NOTE:  
 Dimensions shown are all nominal in millimeters. All tolerances are  $\pm 0.15$ mm except where indicated.

Package Material:  
 Body:  $Al_2O_3$  ceramic  
 Lid: Kovar, Ni plated  
 Terminations: Au plating 1  $\mu$ m min, over a 1.3-8.9  $\mu$ m Ni plating

**MARKING**



ISO 9001  
 Registered

All specifications are believed to be accurate and reliable. However, MNC reserves the right to make changes without notice.  
 © 2007 All rights reserved.