

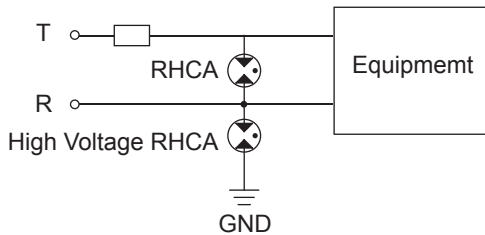
RHCA7044 Series is SMD type- Surge Protective Device for protection from indirect lightning surge. This series has excellent surge suppression performance and 2,000A 8/20 μ s impulse current capacity, also meets electric strength test standards such as AC withstand voltage test.

Features

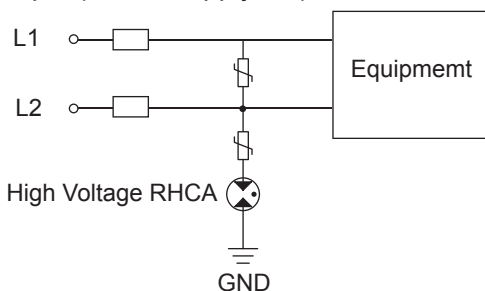
- Chip surge absorber for protection from indirect lightning surge, adaptable to high density surface mount technology
- SMD type, usable for reflow soldering
- Impulse current capacity 2,000A 8/20 μ s
- Small electrostatic capacity (Maximum 0.6pF)
- Creepage distance is more than 6mm

Application

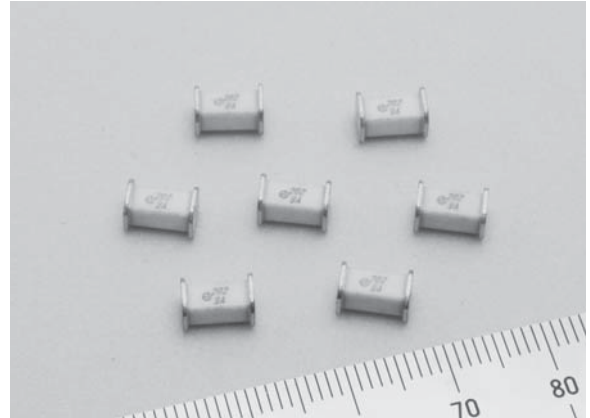
Example (Telecommunication Line):



Example (Power supply AC):

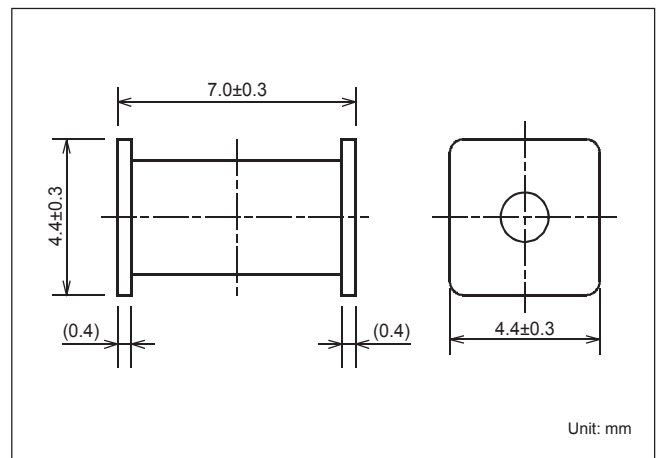


Safety Standard		File No.
UL	:UL1449	E322107
cUL	:C22.2 No.8	



NEW

Dimensions



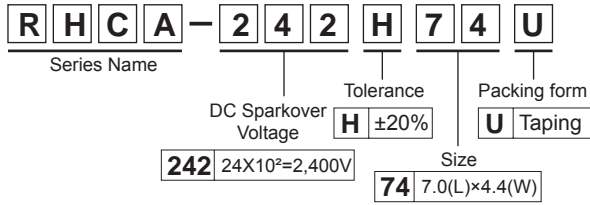
Electrical Specifications

Safety Standard	Model Number	Impulse Sparkover Voltage 1.2/50 μ s (V)		Withstand Voltage Test 50/60Hz	Insulation Resistance min. (M Ω)	Capacitance 1MHz	Impulse Life Test	Impulse Discharge Current	DC Sparkover Voltage (Reference Value)
		Applied Voltage	Specification						
	RHCA-242H74U *1	5,000	4,500 max.	AC1,000V-60sec AC1,200V- 3sec	1,000 (DC500V)	0.6pF Max.	8/20 μ s 100A 300 times	8/20 μ s 2,000A 1 times	2,400V \pm 20%
	RHCA-302H74U *1,2		4,700 max.	AC1,500V-60sec					3,000V \pm 20%
	RHCA-362H74U *1,2		4,950 max.	AC1,500V-60sec AC1,800V- 3sec					3,600V \pm 20%
	RHCA-452H74U *1,2	8,000	7,950 max.	AC2,000V- 60sec	1,000 (DC1,000V)	4,500V \pm 20%			

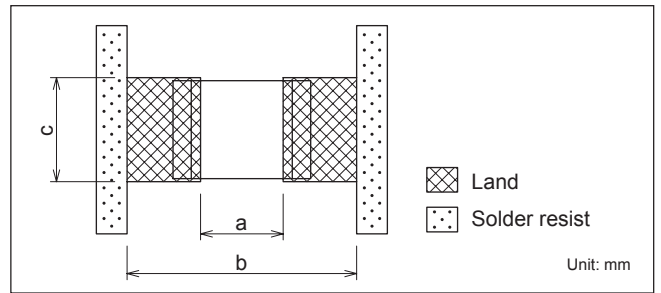
*1 Rated voltage AC125V: Approved if it is connected to UL approved varistor (V1.0mA \geq 270V, D \geq ϕ 10mm).

*2 Rated voltage AC250V: Approved if it is connected to UL approved varistor (V1.0mA \geq 470V, D \geq ϕ 10mm).

● Model numbering system

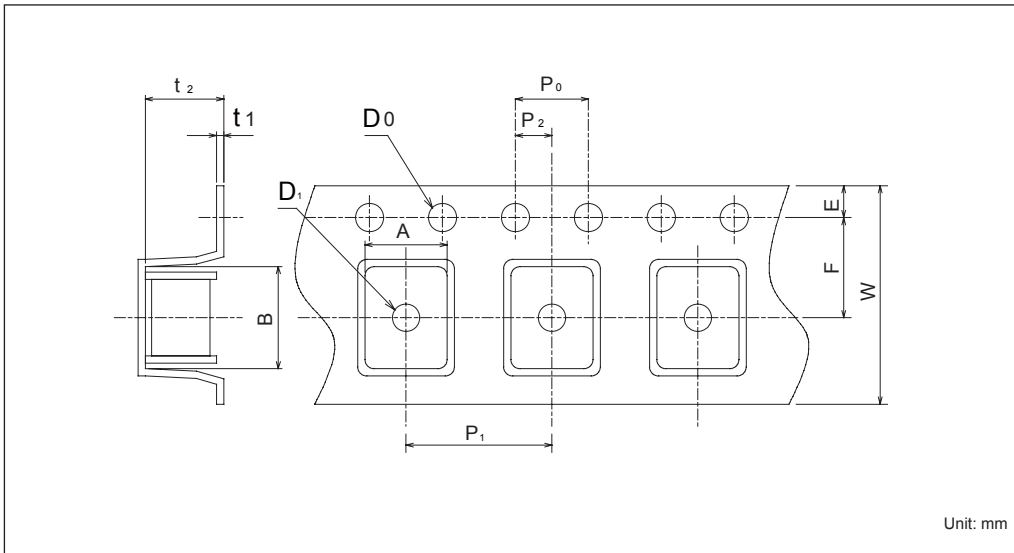


● Recommended Land Pattern



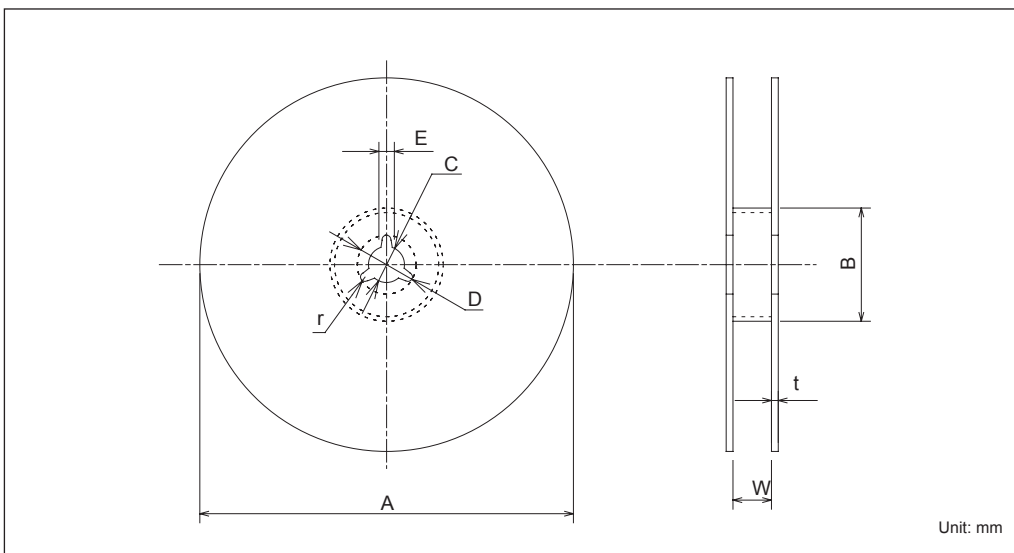
	Dimensions (mm)		
	a	b	c
Reflow Soldering	5.8	8.5	4.8

● Taping Dimensions



Dimensions (mm)	
A	5.0±0.3
B	7.6±0.3
W	16.0±0.4
F	7.5±0.2
E	1.75±0.2
P1	8.0±0.2
P2	2.0±0.2
P0	4.0±0.2
D0	φ 1.55±0.1
D1	φ 1.5 min.
t1	0.40±0.2
t2	4.8±0.2

● Reel Dimensions (2,000pcs per one reel)



Dimensions (mm)	
A	φ 380±3
B	φ 80±2
C	φ 13.0±0.5
D	φ 21±1
E	2.0±1
W	17.5±2
t	2.0±0.5
r	1.0±0.2