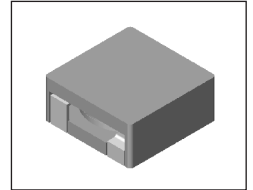


SMT Power Inductor

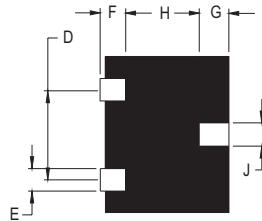
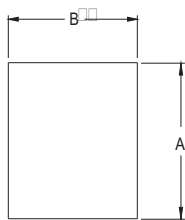
HMP1360 Type

Features

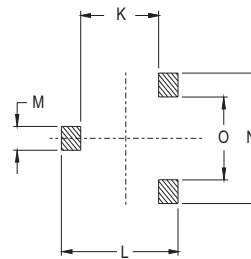
- RoHS compliant.
- Low profile, SMD type.
- High current.
- Magnetic shielded.
- High energy storage and low DCR.
- Provided with embossed carrier tape packing.
- Ideal for power source circuits, DC-DC converter, DC-AC inverters inductor applications.
- In addition to the standard versions shown here, customized inductors are available to meet your exact requirements.



Mechanical Dimension :



RECOMMENDED PAD PATTERNS



UNIT : mm/inch
 D = 7.80 / 0.307
 F = 2.50 / 0.098
 G = 2.50 / 0.098
 H = 8.00 / 0.315
 J = 3.20 / 0.126
 K = 7.00 / 0.276
 L = 14.00 / 0.551
 M = 3.70 / 0.146

UNIT : mm/inch

PART NO.	A	B	C (MAX)	E	N	O
HMP1360	12.70 ± 0.5 / 0.50 ± 0.02	13.00 ± 0.5 / 0.512 ± 0.02	6.00 / 0.236	2.40 / 0.094	11.20 / 0.441	4.40 / 0.173
HMP1360S	12.70 ± 0.5 / 0.50 ± 0.02	13.00 ± 0.5 / 0.512 ± 0.02	6.00 / 0.236	1.80 / 0.071	10.60 / 0.417	5.00 / 0.197

Electrical Characteristics : At 25°C: 100KHz, 1V

PART NO.	L^1 (μ H)	L_i (μ H) MIN	DCR (m Ω) MAX	I_{sat}^2 (Adc)	I_{rms}^3 (Adc)
HMP1360-0R5	0.50	0.40	1.0	40	45
HMP1360-R56	0.56	0.45	1.0	30	45
HMP1360M-0R6	0.60	0.48	1.0	35	45
HMP1360-1R0	1.00	0.80	1.3	30	35
HMP1360-1R0HS	1.00	0.80	2.5	40	25
HMP1360-1R2	1.20	0.96	1.3	25	35
HMP1360M-2R2	2.20	1.76	2.5	18	25
HMP1360M-2R4HS	2.40	1.50	6.6	30	15
HMP1360S-3R5HS	3.50	2.80	7.5	20	11
HMP1360S-4R7	4.70	3.76	7.5	16	11

1. Tolerance of inductance is $\pm 20\%$.
2. I_{sat} is the DC current which cause the inductance drop to L_i .
3. I_{rms} is the DC current which cause the surface temperature of the part increase less than 45°C.
4. Operating temperature : -20°C to 105°C (including self-temperature rise).



DELTA ELECTRONICS, INC.

(TAOYUAN PLANT CPBG) 252, SAN YING ROAD, KUEISAN INDUSTRIAL ZONE, TAOYUAN SHIEN, 333, TAIWAN, R.O.C.

TEL: 886-3-3591968; FAX: 886-3-3591991

<http://www.deltaww.com>