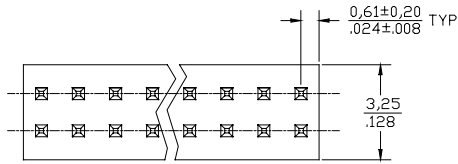


THROUGH HOLE HEADERS

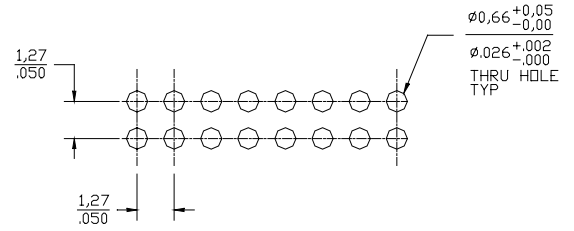
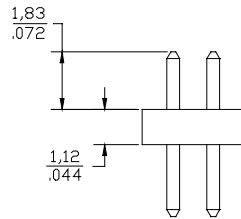
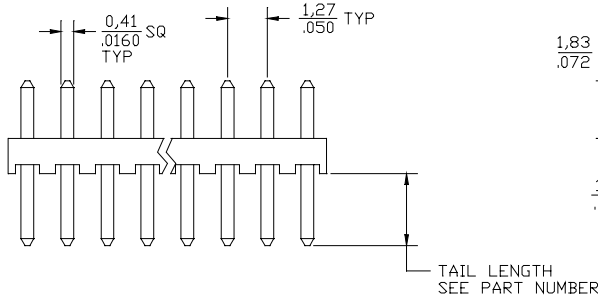
TH50DXXS33-XX-X



Packaging: B=Bulk
T=Tubes

Tail Length: 01=0.060
02=0.090

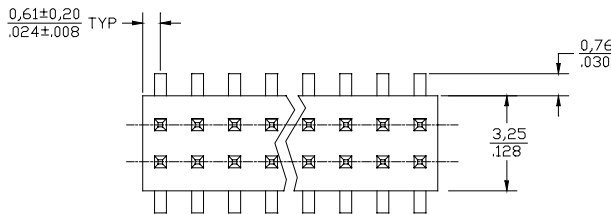
Pins/rows (02 through 15)



SUGGESTED PCB LAYOUT

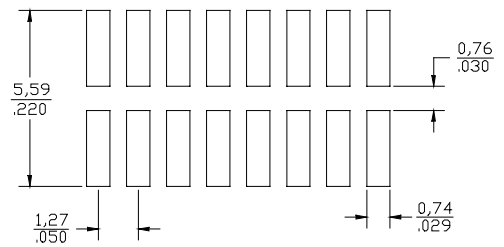
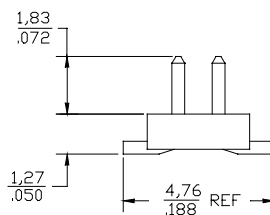
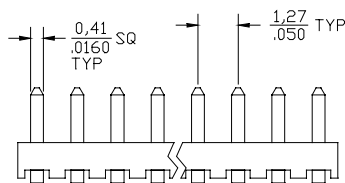
SMT HEADERS

SMH50DXX33-01X



Packaging: T = Tubes (Standard)
R = Tape and Reel

Pins/rows (02 through 15)



PCB LAYOUT