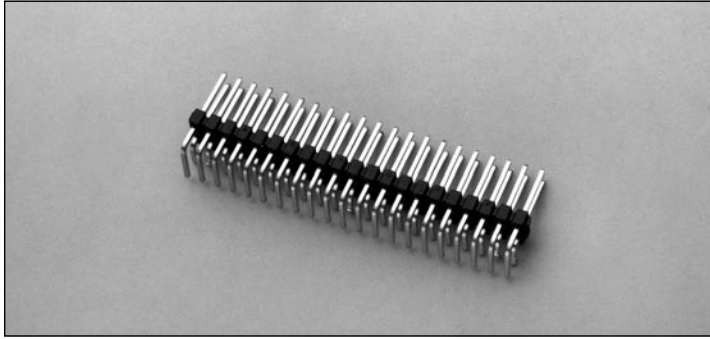
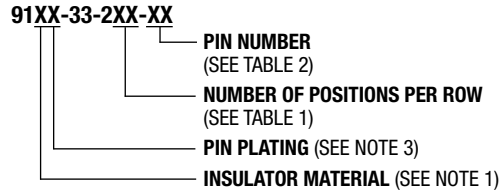


.100" (2.54mm) Dual Row, Through Hole, Right Angle Header with Retention Tails

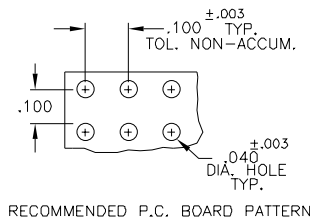
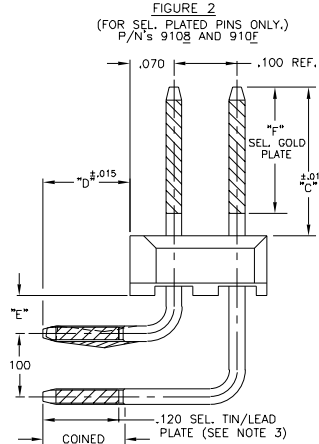
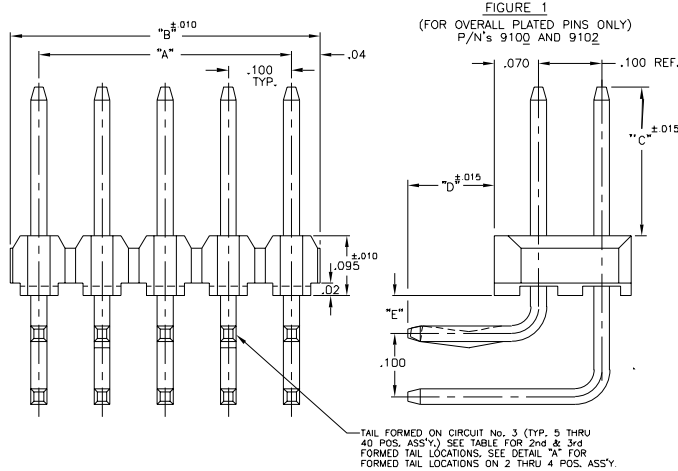
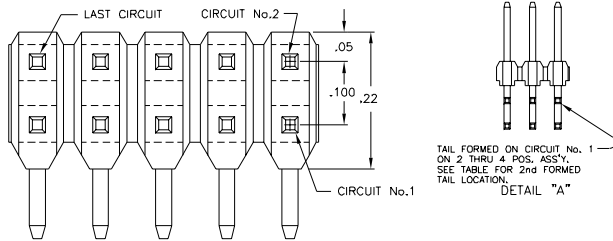


9100 SERIES ("POST/BOXE")

PART NUMBER LEGEND



MATING CONNECTORS: 9000 SERIES



NOTES:

- INSULATOR MATERIAL : 910X - GLASS FILLED POLYESTER (PET); UL 94V-0; COLOR: BLACK
911X - GLASS FILLED POLYESTER (PCT); UL 94V-0; COLOR: BLACK
- PIN MATERIAL : PHOSPHOR BRONZE
- PIN FINISH :
9100 - BRITE TIN OVER NICKEL PLATE.
9102 - .000015 GOLD OVER NICKEL PLATE.
9108 - .000050/.000150 NICKEL PLATE ALL OVER; .000030 SEL. GOLD PLATE AS INDICATED; .0001-.0002 SEL. 90/10 TIN/LEAD ON SOLDER TAIL AS INDICATED.
910E - .000050/.000150 NICKEL PLATE ALL OVER; .000015 SEL. GOLD PLATE AS INDICATED; .0001-.0002 SEL. 90/10 TIN/LEAD ON SOLDER TAIL AS INDICATED.

PART No.	"C"	"D"	"E"	"F"
-01	.230	.110	.06	.200
-02	.320	.110	.06	.200
-03	.225±.008	.085±.008	.035	.200
-04	.342±.008	.102	.06	.200

PART NUMBER	NO. OF CIRCUITS	DIM. A	DIM. B	2nd FORMED TAIL LOCATION CIRCUIT No.	3rd FORMED TAIL LOCATION CIRCUIT No.
910X-33-202-XX	4	1.100	1.190	3	-
-203-	6	.200	.290	5	-
-204-	8	.300	.390	7	-
-205-	10	.400	.490	7	-
-206-	12	.500	.590	9	-
-207-	14	.600	.690	11	-
-208-	16	.700	.790	13	-
-209-	18	.800	.890	15	-
-210-	20	.900	.990	17	-
-211-	22	1.000	1.090	19	-
-212-	24	1.100	1.190	21	-
-213-	26	1.200	1.290	23	-
-214-	28	1.300	1.390	25	-
-215-	30	1.400	1.490	27	-
-216-	32	1.500	1.590	29	-
-217-	34	1.600	1.690	31	-
-218-	36	1.700	1.790	33	-
-219-	38	1.800	1.890	35	-
-220-	40	1.900	1.990	37	-
-221-	42	2.000	2.090	39	21
-222-	44	2.100	2.190	41	21
-223-	46	2.200	2.290	43	23
-224-	48	2.300	2.390	45	23
-225-	50	2.400	2.490	47	25
-226-	52	2.500	2.590	49	25
-227-	54	2.600	2.690	51	27
-228-	56	2.700	2.790	53	27
-229-	58	2.800	2.890	55	29
-230-	60	2.900	2.990	57	29
-231-	62	3.000	3.090	59	31
-232-	64	3.100	3.190	61	31
-233-	66	3.200	3.290	63	33
-234-	68	3.300	3.390	65	33
-235-	70	3.400	3.490	67	35
-236-	72	3.500	3.590	69	35
-237-	74	3.600	3.690	71	37
-238-	76	3.700	3.790	73	37
-239-	78	3.800	3.890	75	39
910X-33-240-XX	80	3.900	3.990	77	39