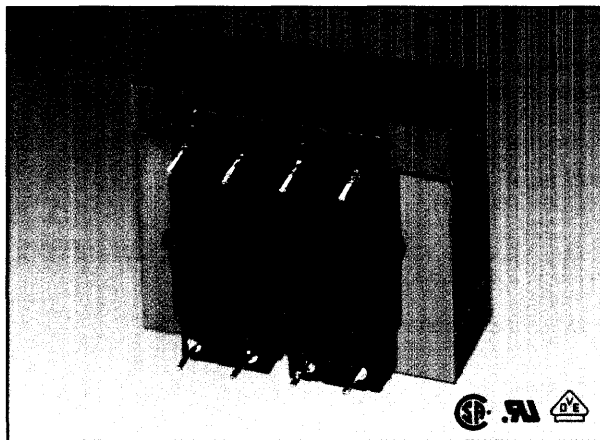


One-4-All™ International Transformers Printed Circuit Mount



International Standards at Lower Cost and Better Performance



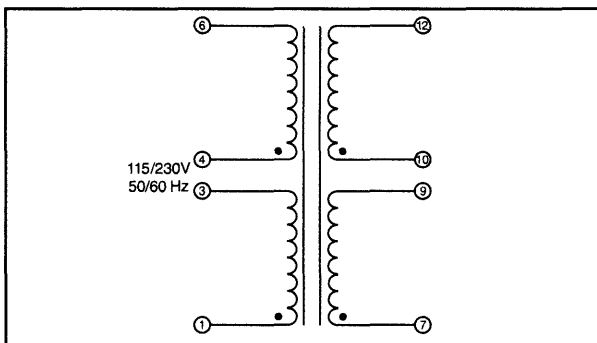
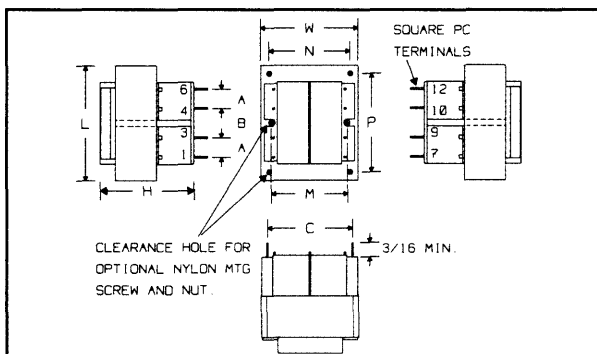
Signal's 14A transformers are used in low power applications and provide the high isolation, creepage and clearance necessary to comply with international safety standards.

General Specifications

- Power – 20 VA to 56 VA
- Dielectric Strength – 4000VRMS Hipot
- Primaries – Dual primaries (115/230V - 50/60 Hz)
- Secondaries – Series or parallel secondaries
- Electrostatic Shield – Not necessary, split or dual bobbin construction
- Insulation – Class F insulation (155°C)
- Flammability Rating – Bobbin and wrap around shroud material meet UL 94V0

Agency Standards

- UL recognized to UL 506 (File #E63829)
- CSA certified to C22.2 #66 (File #LR 51265)
- VDE certified to VDE 0805 / EN 60950 (File #1446)
- VDE certified to IEC 950



Part No.	VA (Size)	Secondary RMS Rating	
		Series	Parallel
14A-20-10	20	10VCT @ 2.0A	5V @ 4.0A
14A-30-10	30	10VCT @ 3.0A	5V @ 6.0A
14A-56-10	56	10VCT @ 5.6A	5V @ 11.2A
14A-20-12	20	12.6VCT @ 1.6A	6.3V @ 3.2A
14A-30-12	30	12.6VCT @ 2.4A	6.3V @ 4.8A
14A-56-12	56	12.6VCT @ 4.4A	6.3V @ 8.8A
14A-20-16	20	16VCT @ 1.25A	8V @ 2.5A
14A-30-16	30	16VCT @ 1.9A	8V @ 3.8A
14A-56-16	56	16VCT @ 3.5A	8V @ 7.0A
14A-20-20	20	20VCT @ 1.0A	10V @ 2.0A
14A-30-20	30	20VCT @ 1.5A	10V @ 3.0A
14A-56-20	56	20VCT @ 2.8A	10V @ 5.6A
14A-20-24	20	24VCT @ 0.83A	12V @ 1.66A
14A-30-24	30	24VCT @ 1.25A	12V @ 2.50A
14A-56-24	56	24VCT @ 2.33 A	12V @ 4.66A
14A-20-28	20	28VCT @ 0.72A	14V @ 1.44A
14A-30-28	30	28VCT @ 1.06A	14V @ 2.12A
14A-56-28	56	28VCT @ 2.0A	14V @ 4.0A
14A-20-36	20	36VCT @ 0.56A	18V @ 1.12A
14A-30-36	30	36VCT @ 0.82A	18V @ 1.64A
14A-56-36	56	36VCT @ 1.56A	18V @ 3.12A

VA (Size)	Dimensions						Sq. Pin Dimensions	Mtg. Dim.			Mtg. Screw		Wgt
	L	W	H	A	B	C		M	N	P	Size	Qty	
20	2.25" 57.2mm	1.87" 47.6mm	1.62" 41.3mm	0.400" 10.2mm	0.400" 10.2mm	1.460" 37.1mm	0.038" 0.97mm	1.50" 38.1mm	-	-	#4	2	0.90 lbs 0.41 kg
30	2.62" 66.7mm	1.18" 55.5mm	1.56" 39.7mm	0.550" 13.9mm	0.275" 7.0mm	1.680" 42.7mm	0.045" 1.14 mm	-	1.75" 44.4mm	2.18" 55.5mm	#6	4	1.15 lbs 0.52 kg
56	3.00" 76.2mm	2.50" 63.5mm	1.81" 46.0mm	0.600" 15.2mm	0.300" 7.6mm	1.900" 48.3mm	0.045" 1.14mm	-	2.00" 50.8mm	2.50" 6.35mm	#6	4	1.70 lbs 0.77 kg

If you don't see a specific part that meets your requirement, see page 31 for our custom magnetics design data sheet.



CALL: 516-239-5777 • FAX: (24hrs) 516-239-7208

500 Bayview Avenue, Inwood, New York 11096