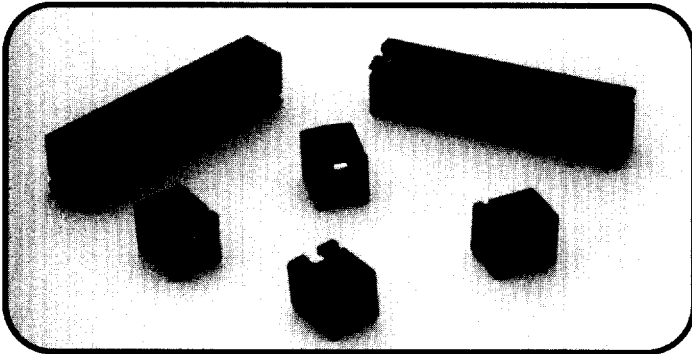


S9 Series

0.1 (2.54mm) Centers



FEATURES

- Two to ten positions
- Mates with 0.025 (0.635) square contact post on 0.100 centers
- Unique dual leaf contact gives balanced forces and low resistance
- Fully stackable side to side or end to end without loss of positions
- Tin or three types of gold plating options
- Open top to accommodate mating with long contact post

Performance Specifications

Materials and Finish

Dielectric Body: PBT thermoplastic, black color, 30% glass filled, self-extinguishing, 94V-0 rated

Contact Material: Phosphor bronze

Contact Finish: Tin: 100 microinch tin over 70 microinch copper

- Gold: (A) 10 microinch gold over 50 microinch nickel
 (B) 15 microinch gold over 50 microinch nickel
 (C) 30 microinch gold over 50 microinch nickel

Electrical Characteristics

Contact Current Rating: 2 amps

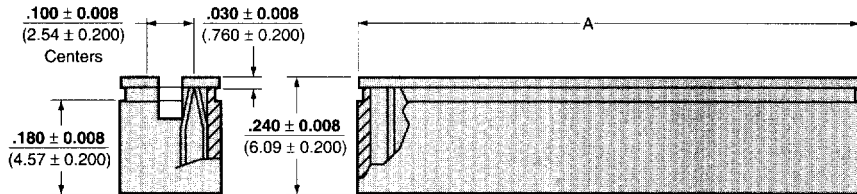
Contact Resistance: 10 milliohms maximum

Dielectric Withstanding Voltage: 630Vdc minimum

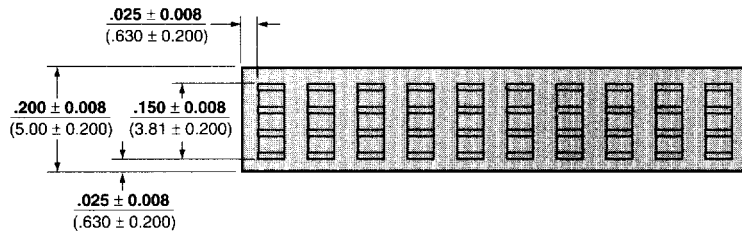
Insulation Resistance: 5,000 megohms minimum

Temperature Rating: -55° C to + 125° C

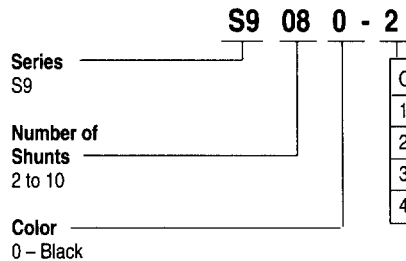
DIMENSIONS



No. of Shunts	Dimensions A
2	0.300
3	0.400
4	0.500
5	0.600
6	0.700
7	0.800
8	0.900
9	1.000
10	1.100



How To ORDER



Code	Plating Options
1	100 microinch tin
2	10 microinch gold
3	15 microinch gold
4	30 microinch gold