



Non-Insulated Terminals Turret Solid Subminiature

Please refer to Figure 2064

Part No.	Board Thick	Mounting Hole Dia	D Nom	L Nom	Swage Tool
2064AA	.016	.034	.032	.037	2064
2064A	.031	.034	.032	.053	2064
2064B	.062	.034	.032	.084	2064
2064C	.094	.034	.032	.115	2064
2064D	.125	.034	.032	.147	2064

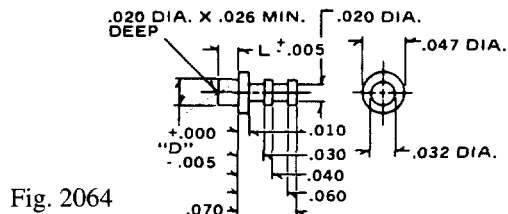


Fig. 2064

Please refer to Figure 2031

Part No.	Board Thick	Mounting Hole Dia	D Nom	L Nom	Swage Tool
2031AA	.016	.044	.042	.037	2031
2031A	.031	.044	.042	.053	2031
2031B	.062	.044	.042	.084	2031
2031C	.094	.044	.042	.115	2031
2031D	.125	.044	.042	.147	2031

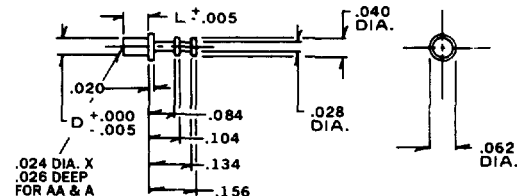


Fig. 2031

Please refer to Figure 2030

Part No.	Board Thick	Mounting Hole Dia	D Nom	L Nom	Swage Tool
2030AA	.015	.064	.062	.037	2030
2030A	.031	.064	.062	.053	2030
2030B	.062	.064	.062	.084	2030
2030C	.094	.064	.062	.115	2030
2030D	.125	.064	.062	.147	2030

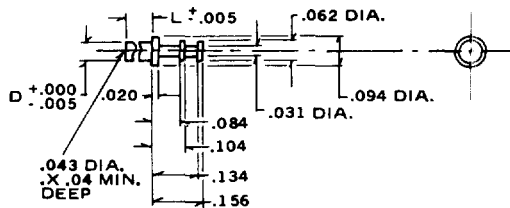


Fig. 2030

Please refer to Figure 2520

Part No.	Board Thick	Mounting Hole Dia	D Nom	L Nom	Swage Tool
2520A	.031	.075	.073	.053	2520
2520B	.062	.075	.073	.084	2520
2520C	.094	.075	.073	.115	2520
2520D	.125	.075	.073	.147	2520

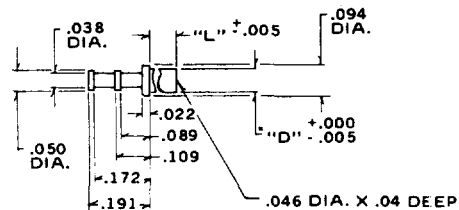


Fig. 2520

Non-Insulated Terminals Turret Hollow Miniature

Please refer to Figure 1392

Part No.	Board Thick	Mounting Hole Dia	D Nom	L Nom	Swage Tool
1392A	.031	.113	.111	.075	1392
1392B	.062	.113	.111	.105	1392
1392C	.094	.113	.111	.135	1392
1392D	.125	.113	.111	.165	1392

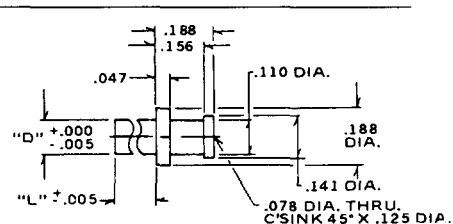


Fig. 1392

Standard Plating Suffix to Part Number
See Page 93 for all plating options.

Terminal
-1 (Ag over Cu)

TOLERANCE: .xxx ± .005, .xx ± .01 (ALL DIMS. BEFORE PLATING)