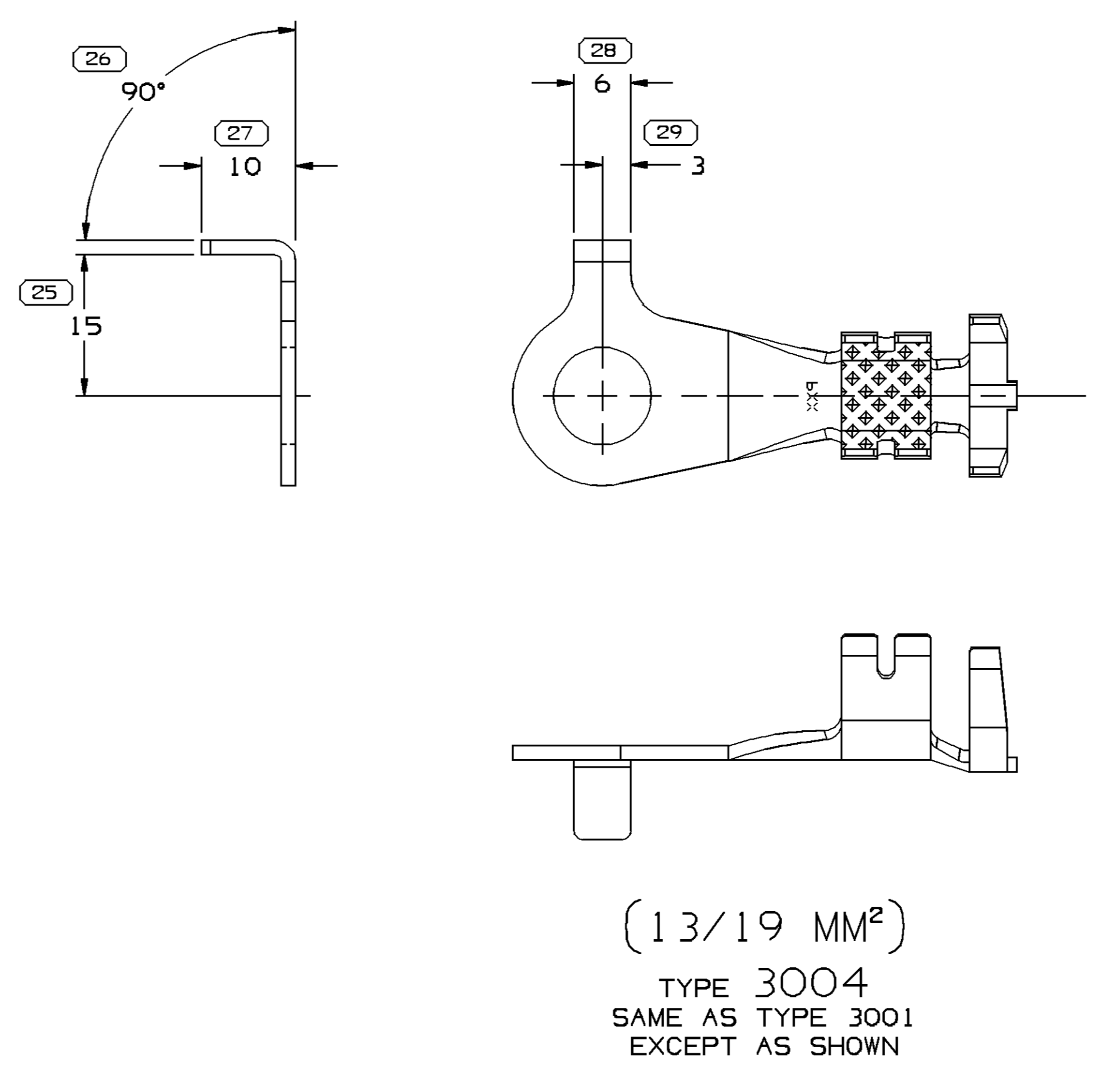
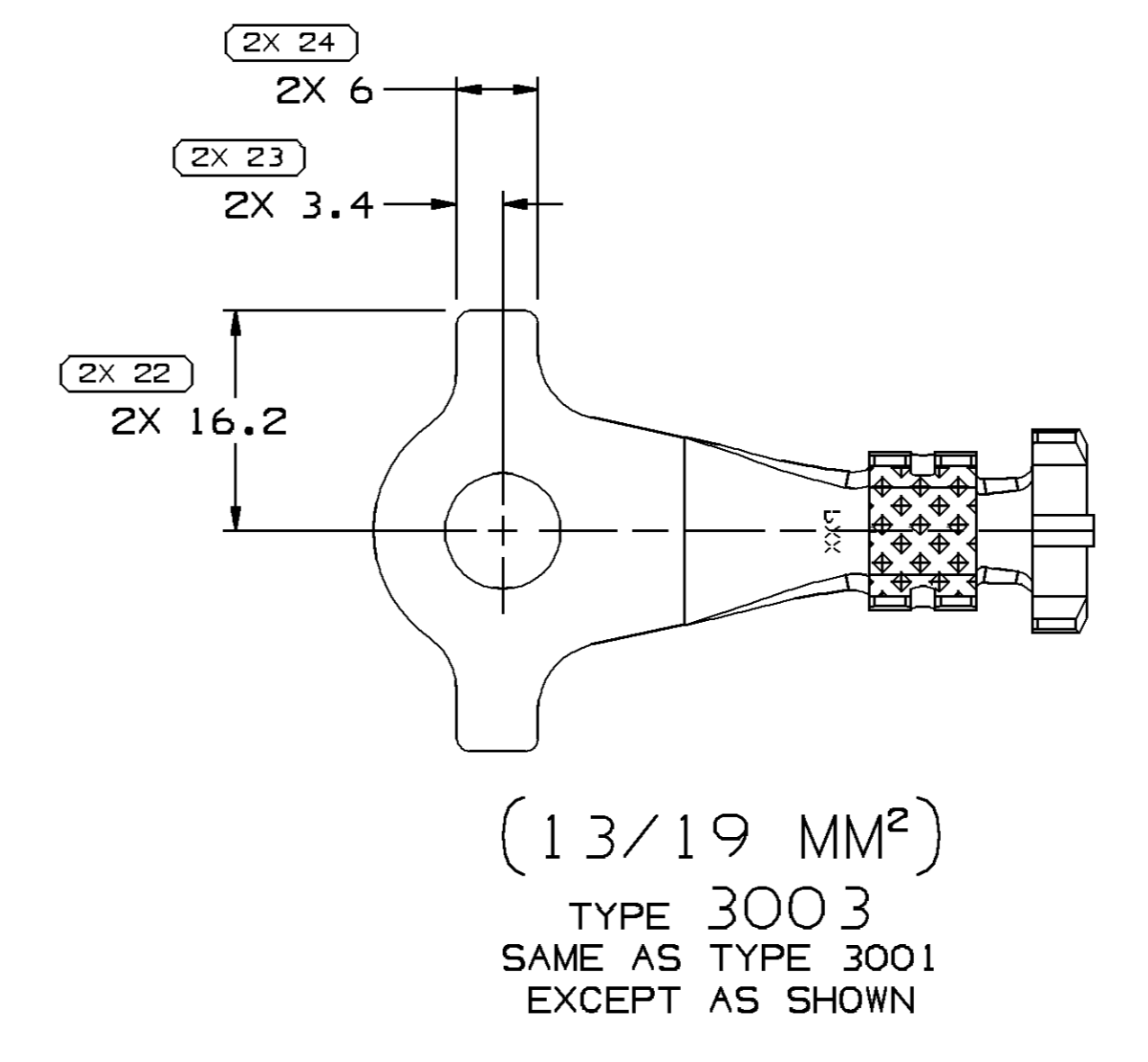
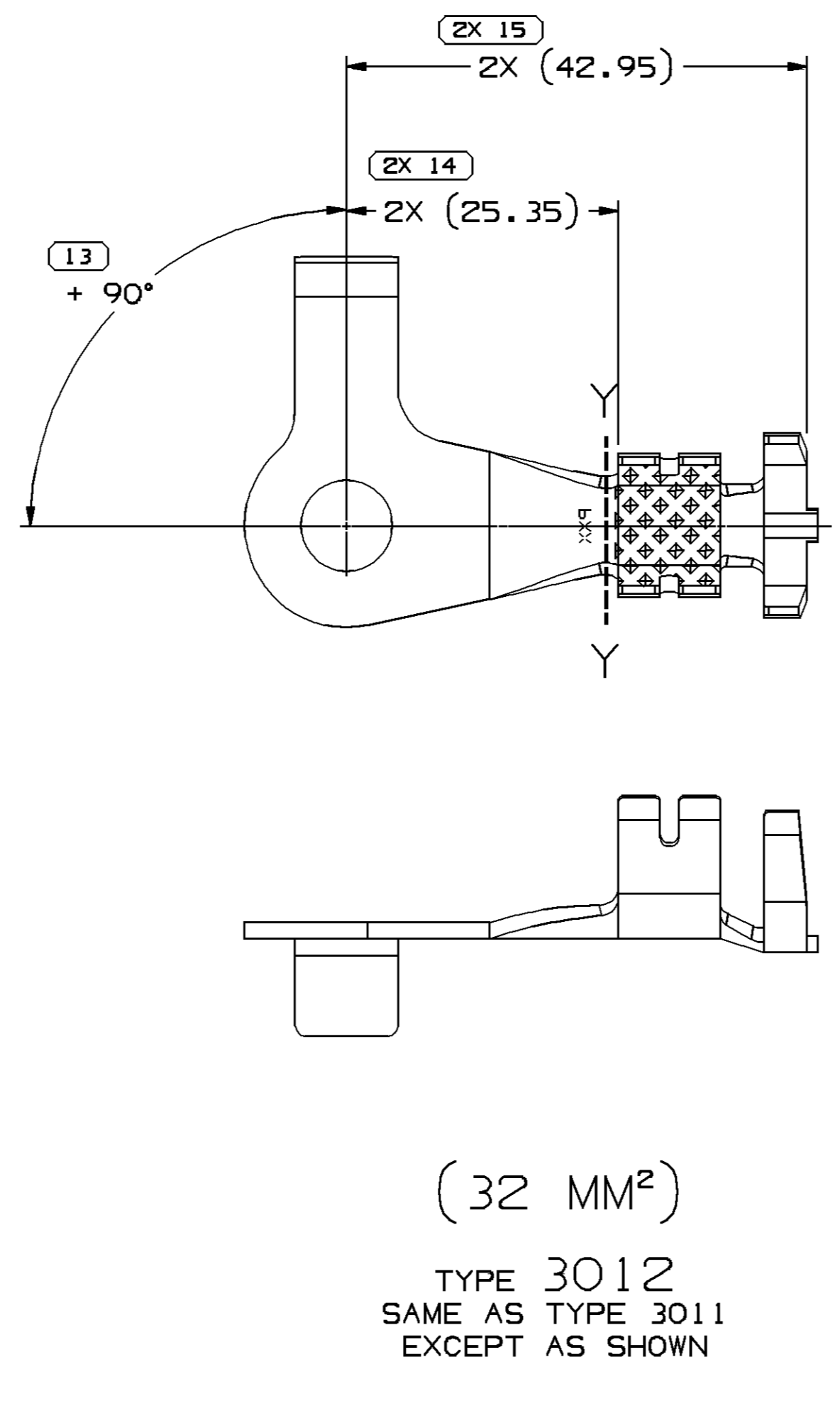
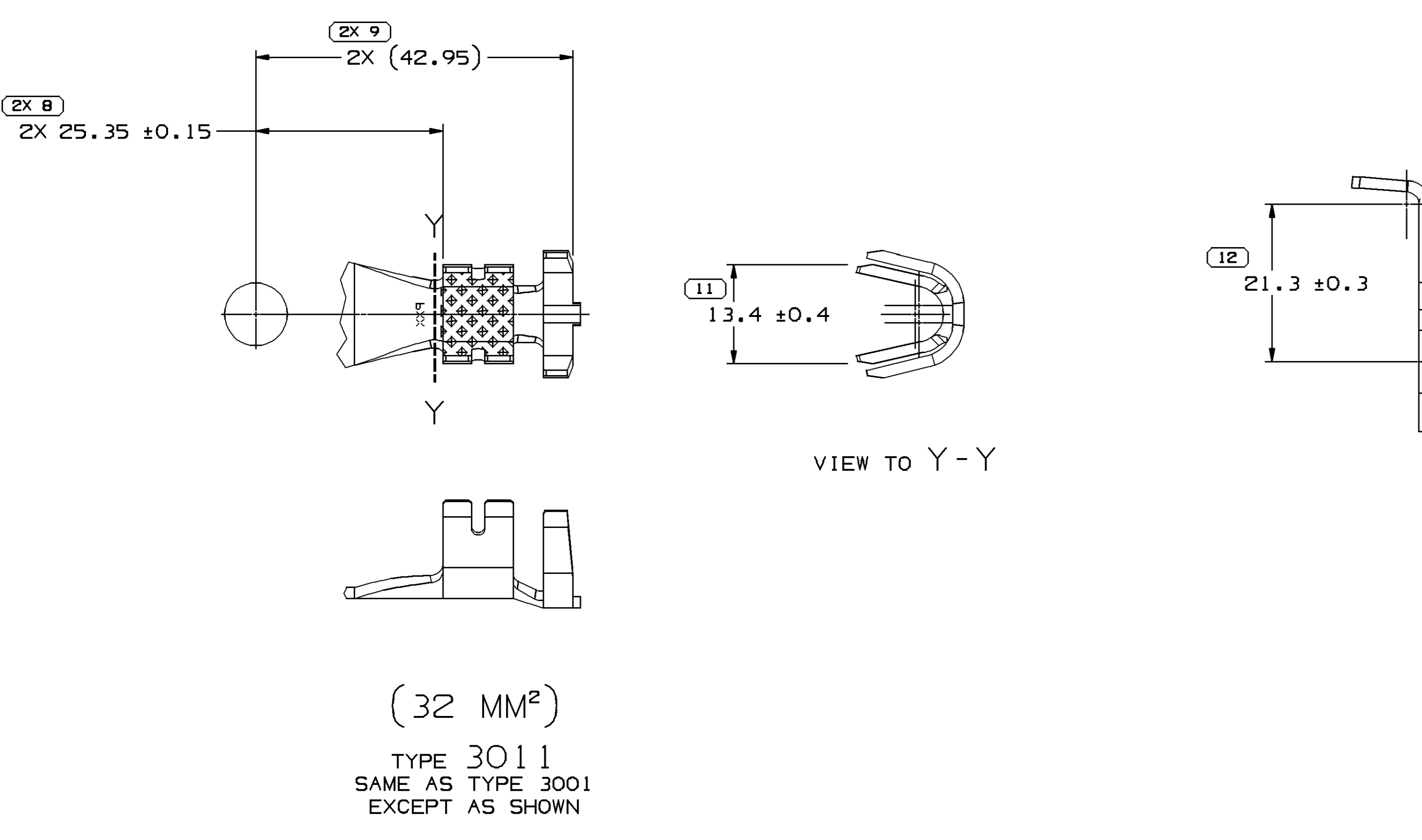
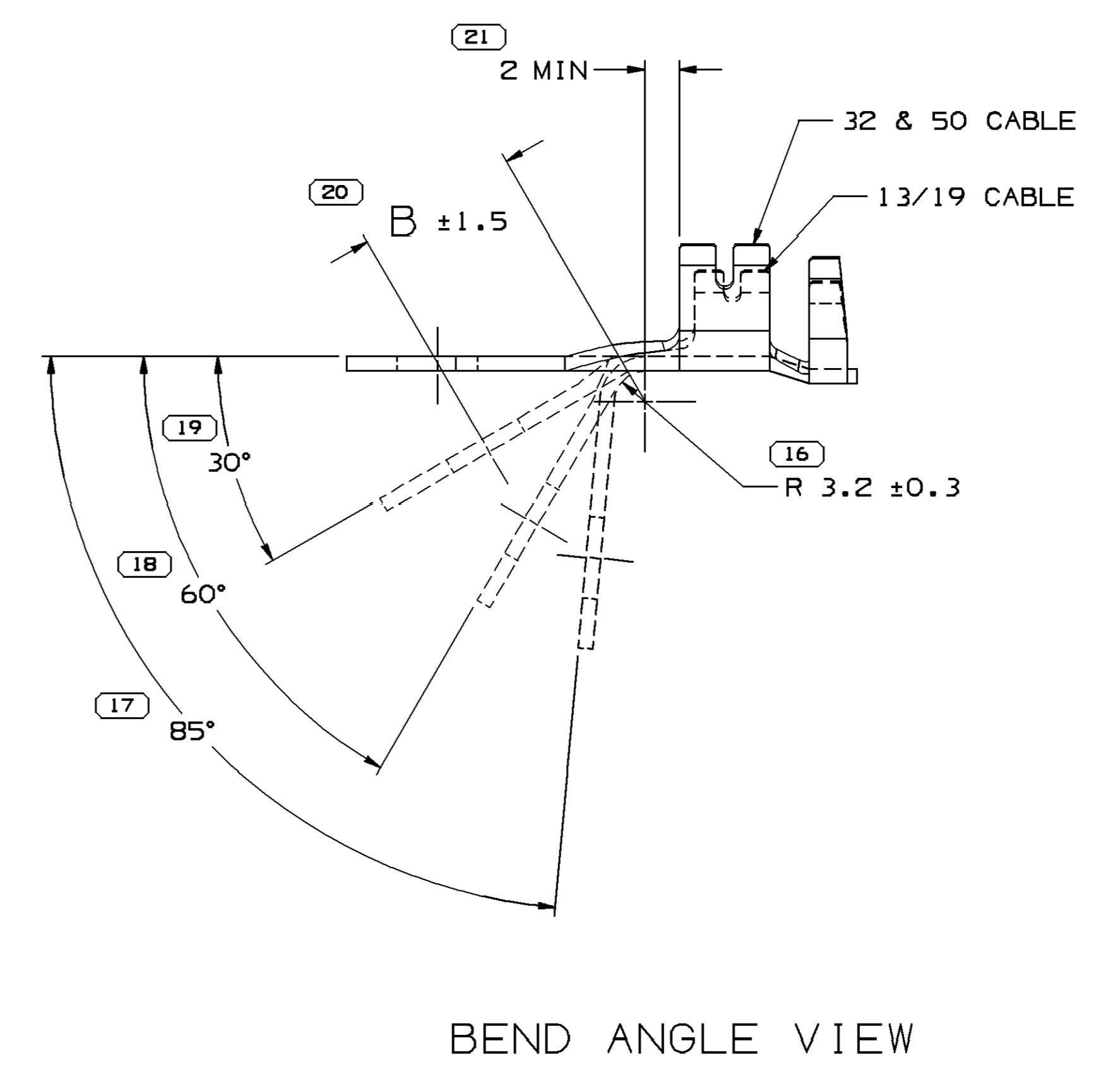
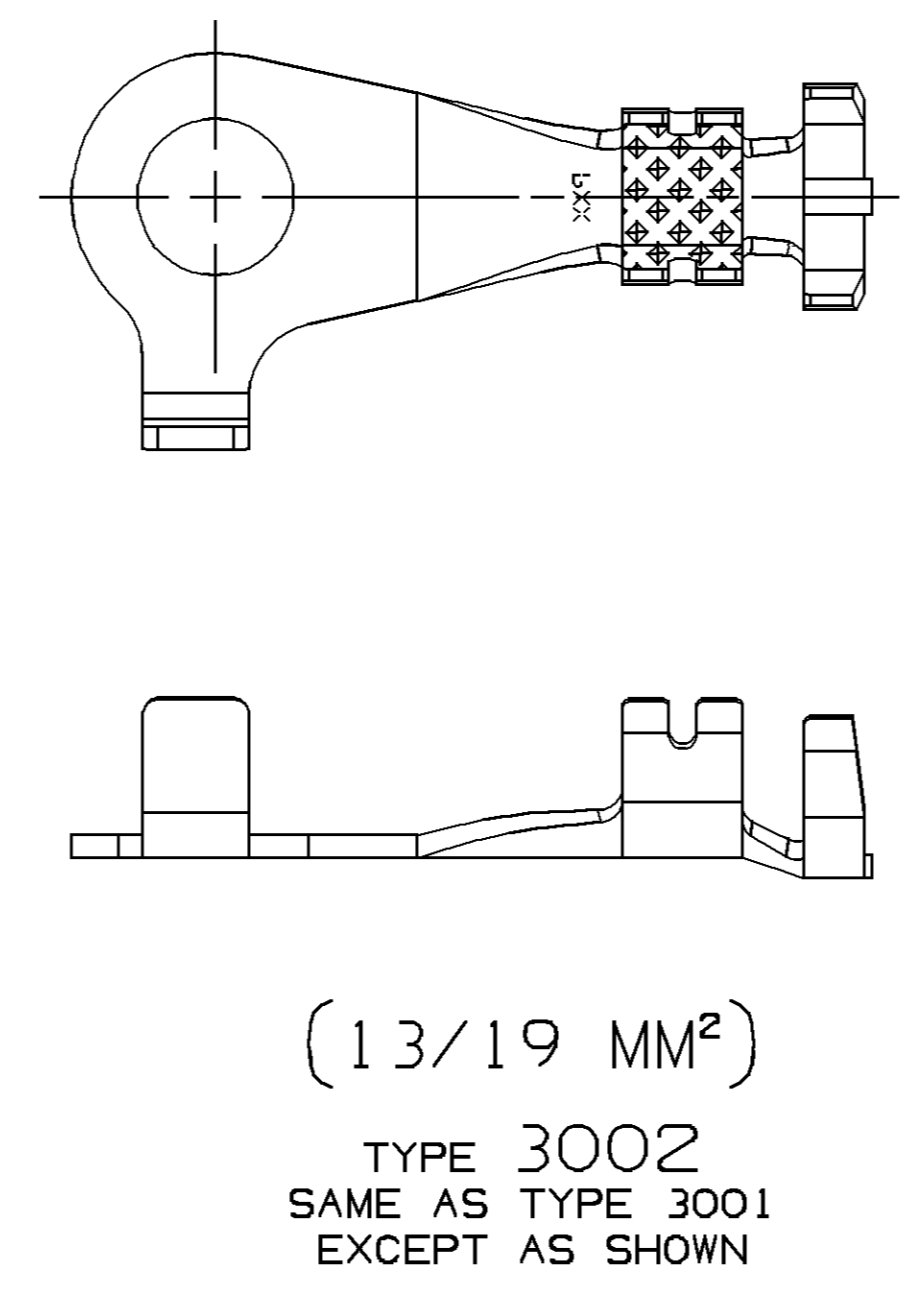
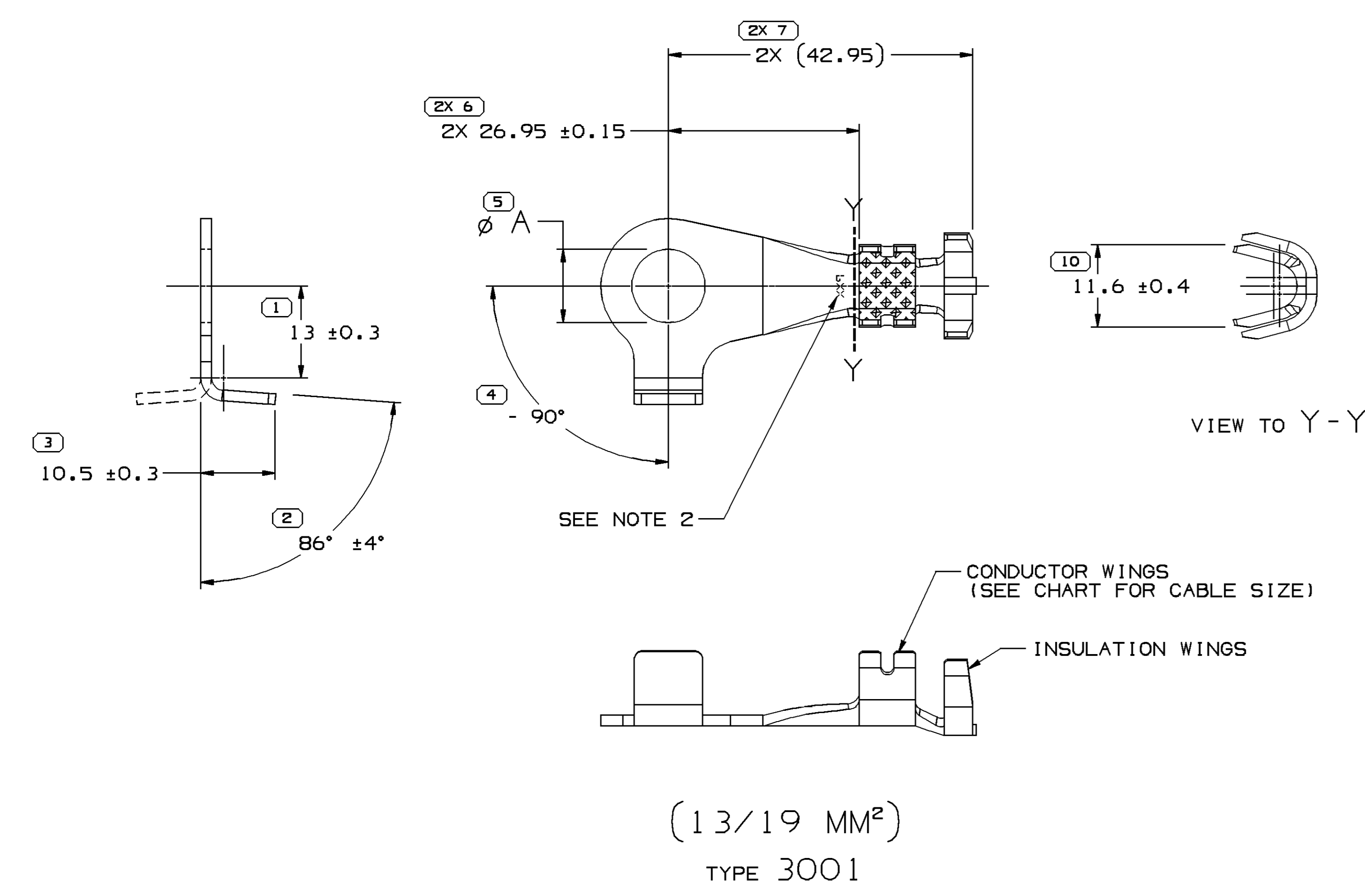
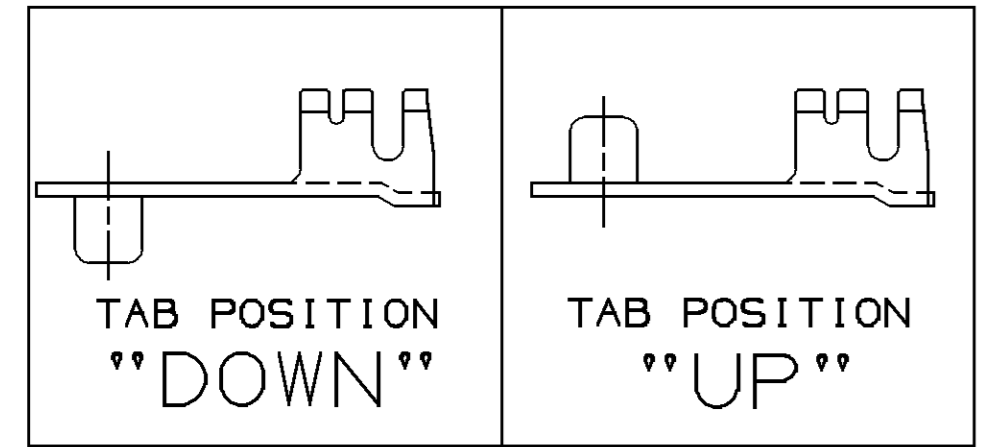


SYMBOL DEFINITION		TOTAL NO OF INSPECTIONS REQUIRED	MISSING SYMBOLS
A DIMENSION WITHOUT AN INSPECTION REPORT SYMBOL DOES NOT REQUIRE INSPECTION. IT MAY BE CONTROLLED ON THE INDIVIDUAL COMPONENT DRAWING.		38	NO MISSING SYMBOL NUMBER
		LAST NO. USED	29

DWG STATUS				REVISION HISTORY				AUTH		DR		AP/VD	
DATE	STG	REV	N/P	CHG	ZONE								
19MR02	R	001	-	-		15423377 & 15423378 - RELEASED ; 15411122 - WAS ON TAXI 12129597, SHT 3	222470	JAA	JAA	JK	JK		
12M105	R	02	-	-		13528318 AND 13528319 - RELEASED	267891	RH	RH	6R	6R		
19SE05	R	03	-	-		13528318 AND 13528319 - MAT'L SPEC WAS M1598491	272501	TLD	TLD	6R	6R		
09N005	R	04	-	-		13546213 & 13546704 - RELEASED	273983	JS	JS	WM	WM		
23M106	R	05	-	-		13581425 - RELEASED	280570	RTV	JVM	J6S	J6S		
09SE06	R	06	-	-		13581425 - UPDATED PDM ATTRIBUTES	284437	CCV	JAA	J6S	J6S		



DEDUCT		
ANGLE	CABLE 13/19	CABLE 32,50
0°	27	25
30°	25	23
60°	19	17
85°	9	7



10.34 ± 0.13	3/8	M10
8.5 ± 0.13	5/16	MB
6.7 ± 0.13	1/4	M6
∅ A	STANDARD	METRIC
	SCREW/STUD	SIZE

NOTES
 1. UNLESS OTHERWISE SPECIFIED AND/OR INDICATED:
 DIMENSIONS ARE TO FACE OF VIEW SHOWN AND AUTOMATICALLY ROUNDED BY COMPUTER FOR INSPECTION (SEE MATH MODEL FOR PRECISE DIMENSIONS). FOR ALL OTHER DIMENSIONS NOT SHOWN BUT REQUIRED FOR TOOL BUILD, SEE MATH MODEL FOR PRECISE TOOL PATH DATA.
 2. "PXX" INDICATES "P" PLUS LAST TWO DIGITS OF MAKE DIE SERIES NUMBER (P01, P02, P03, ETC.).

PART NO	REV	N/P	STATUS	MATERIAL SPECIFICATION AND COLOR	SIZE	CABLE	TYPE	+	-	DOWN	UP	M6	MB	M10	30° ± 5°	REV	N/P	STATUS	60° ± 5°	REV	N/P	STATUS	85° ± 5°	REV	N/P	STATUS	B DIM
13581425	01	AA	-	M1598174 210 GILDING EX SPR SN PLTD	1.52 X 40.49	13/19	3004	X	-	X	-	-	-	X	-	-	-	-	-	-	-	-	-	-	-	-	-
13546213	01	-	-	M1598170 C21000 EX SPR	1.52 X 33.32	13/19	3003	X	X	-	-	-	X	-	-	-	-	-	-	-	-	-	-	-	-	-	-
13528318	01	AA	-	M1598174 210 GILDING EX SPR SN PLTD	1.52 X 40.49	13/19	3002	-	X	-	X	-	-	X	-	-	-	-	-	-	-	-	-	-	-	-	16.8
15411122	001	AB	-	M1598491 210 GILDING EX SPR SN PLTD	1.52 X 55.98	32	3012	X	-	X	-	-	X	-	-	-	-	-	-	-	-	-	-	-	-	-	16.8
15423377	001	-	-	M1598174 210 GILDING EX SPR SN PLTD	1.52 X 40.49	13/19	3001	-	X	-	X	-	-	X	-	-	-	-	-	-	-	-	-	-	-	-	16.8

PART DRAWING	
STYLE	D
VOLUME 10/1	DISTR CODE
UNLESS OTHERWISE SPECIFIED	
THIS DOCUMENT IS IN ACCORDANCE WITH ASME Y14.9M-1994 AS MODIFIED BY THE IN CHARGE, DIMENSIONING AND TOLERANCE PRACTICES (DTP). ALL DIMENSIONS UNLESS OTHERWISE SPECIFIED ARE IN MILLIMETERS. UNLESS OTHERWISE SPECIFIED, DIMENSIONS ARE TO FACE OF VIEW SHOWN AND AUTOMATICALLY ROUNDED BY COMPUTER FOR INSPECTION (SEE MATH MODEL FOR PRECISE DIMENSIONS). FOR ALL OTHER DIMENSIONS NOT SHOWN BUT REQUIRED FOR TOOL BUILD, SEE MATH MODEL FOR PRECISE TOOL PATH DATA.	
THIRD ANGLE PROJECTION	DO NOT SCALE
USE MATH DATA	UNGRAPHS

DELPHI
 DELPHI PACKARD ELECTRIC SYSTEMS
 WARREN, OH

DR	DATE
APV01 J.S. ALVARADO	19MR02
APV02 J.S. ALVARADO	22MR02
APV03 JOHN KOUNTZ	27MR02
APV04	
APV05	

SUBSTANCES OF CONCERN AND RECYCLED CONTENT PER DELPHI 10949001

MATERIAL SEE CHART

DRAWING NAME
 TAXI TERM RING BATT

DRAWING NUMBER
02973866

SCALE: 2:1
 FRAME NO: 1 OF 1
 SHEET NO: 30 OF 30
 REV: R 06

(S) PROCESS SENSITIVE DIMENSION	
DIMENSIONS ENCLOSED IN () INDICATE REFERENCE DIMENSIONS AND NO TOLERANCE LIMITS ARE ESTABLISHED	
DIMENSIONAL RANGE: DIM	CHART D
FROM 0 TO 12	> 12
TOLERANCE UNLESS OTHERWISE SPECIFIED	
±0.1	±0.2
ANGULAR TOLERANCE 32°	

DATE: 13-SEP-08 TIME: 13:03