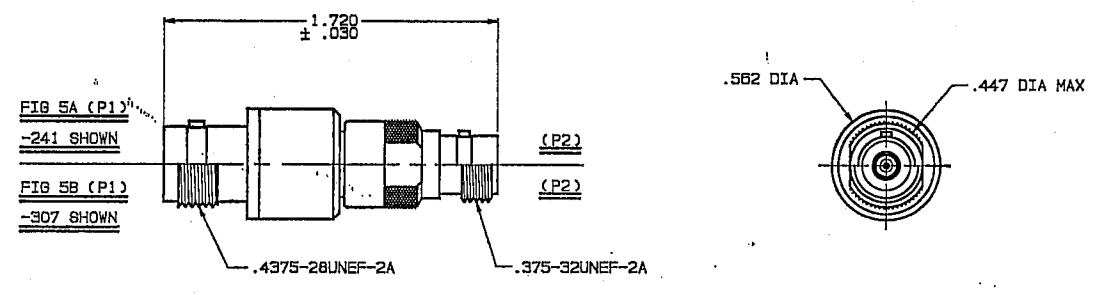
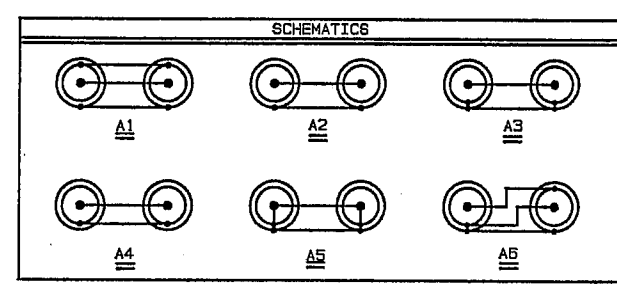
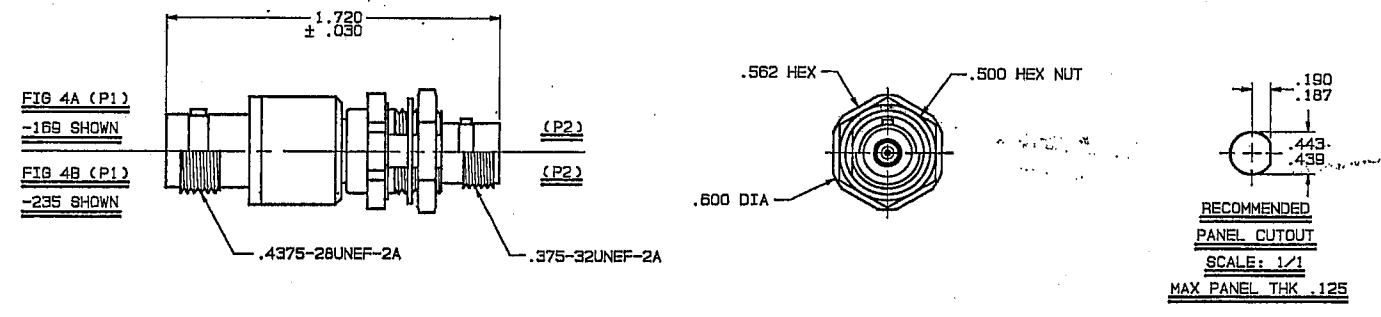
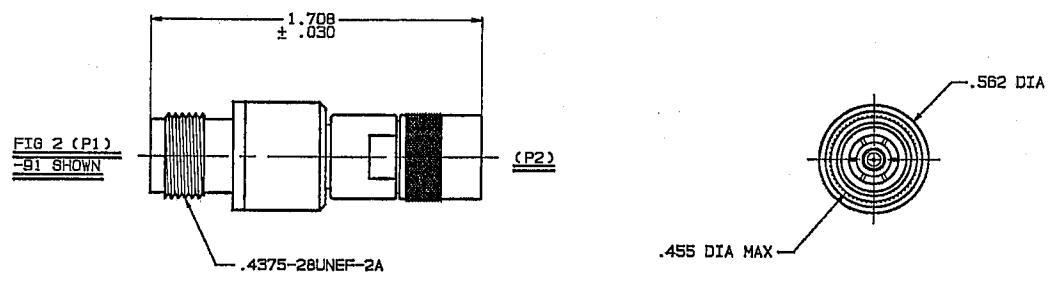
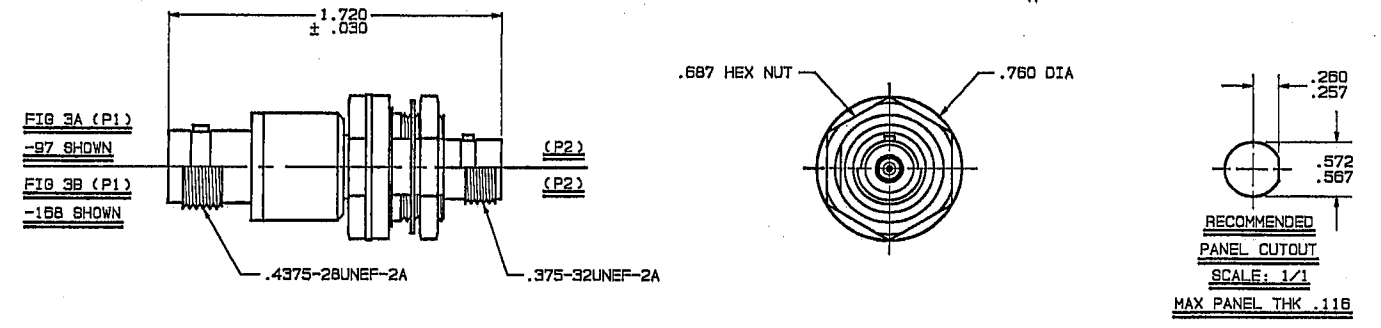
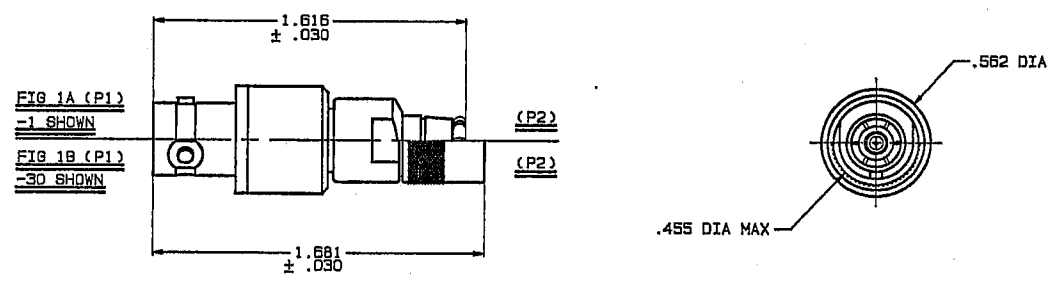


P2 CONN TYPE	FIG NO	PI CONN TYPE																														INCH	MM
		BJ77TL															BJ77FL																
		SCHEMATICS																															
A1	A2	A3	A4	A5	A6	A1	A2	A3	A4	A5	A6	A1	A2	A3	A4	A5	A6	A1	A2	A3	A4	A5	A6	A1	A2	A3	A4	A5	A6				
PL153	1A	-1	-2	-3	-4	-5	-6	-7	-8	-9	-10	-11	-12	-13	-14	-15	-16	-17	-18	-19	-20	-21	-22	-23	-24	.125	3.18						
PL155	1B	-25	-26	-27	-28	-29	-30	-31	-32	-33	-34	-35	-36	-37	-38	-39	-40	-41	-42	-43	-44	-45	-46	-47	-48	.187	4.75						
PL155FL	1B	-49	-50	-51	-52	-53	-54	-55	-56	-57	-58	-59	-60	-61	-62	-63	-64	-65	-66	-67	-68	-69	-70	-71	-72	.190	4.83						
PL315S	2	-73	-74	-75	-76	-77	-78	-79	-80	-81	-82	-83	-84	-85	-86	-87	-88	-89	-90	-91	-92	-93	-94	-95	-96	.257	6.53						
BJ154	3A	-97	-98	-99	-100	-101	-102	-103	-104	-105	-106	-107	-108	-109	-110	-111	-112	-113	-114	-115	-116	-117	-118	-119	-120	.260	6.60						
BJ154FL	3A	-121	-122	-123	-124	-125	-126	-127	-128	-129	-130	-131	-132	-133	-134	-135	-136	-137	-138	-139	-140	-141	-142	-143	-144	.439	11.15						
BJ3154	3B	-145	-146	-147	-148	-149	-150	-151	-152	-153	-154	-155	-156	-157	-158	-159	-160	-162	-163	-164	-165	-166	-167	-168	-169	.443	11.25						
BJ159	4A	-169	-170	-171	-172	-173	-174	-175	-176	-177	-178	-179	-180	-181	-182	-183	-184	-185	-186	-187	-188	-189	-190	-191	-192	.447	11.35						
BJ159FL	4A	-193	-194	-195	-196	-197	-198	-199	-200	-201	-202	-203	-204	-205	-206	-207	-208	-209	-210	-211	-212	-213	-214	-215	-216	.455	11.56						
BJ3159	4B	-217	-218	-219	-220	-221	-222	-223	-224	-225	-226	-227	-228	-229	-230	-231	-232	-233	-234	-235	-236	-237	-238	-239	-240	.500	12.70						
CJ150	5A	-241	-242	-243	-244	-245	-246	-247	-248	-249	-250	-251	-252	-253	-254	-255	-256	-257	-258	-259	-260	-261	-262	-263	-264	.562	14.27						
CJ150FL	5A	-265	-266	-267	-268	-269	-270	-271	-272	-273	-274	-275	-276	-277	-278	-279	-280	-281	-282	-283	-284	-285	-286	-287	-288	.567	14.40						
CJ3150	5B	-289	-290	-291	-292	-293	-294	-295	-296	-297	-298	-299	-300	-301	-302	-303	-304	-305	-306	-307	-308	-309	-310	-311	-312	.572	14.53						
																										.600	15.24						
																										.687	17.45						
																										.760	19.30						
																										1.616	41.05						
																										1.681	42.70						
																										1.708	43.36						
																										1.720	43.69						

REVISIONS				22-16	8H 1
REV	EO	DESCRIPTION	DWN	APPROVED	DATE
A	802B	ITEMS 1, 2, 3 & 4 P/N'S WERE 3-0001, 305-0508, 3-0094, AND 305-0013 AND REDWN	RAG	<i>CMJ</i>	6-8-88

RED INDICATES ORIGINAL



- EXAMPLE OF COMPLETE MODEL NO:
AD - BJ77 - A1 - PL153
ADAPTER (P1) CONN TYPE SCHEMATIC (P2) CONN TYPE
- EXAMPLE OF COMPLETE PART NO:
22-16-1
BASIC PART NO DASH NO
- BETWEEN SERIES ADAPTER, 2/3/4-LUG & THREADED CONCENTRIC TWINAX/TRIAX TRB & TRT TYPE TO COMPLETE *150* SERIES
- FINISH: TFS-1A (NICKEL)
- ALL DIM ARE IN INCHES

QTY	DESCRIPTION	PART NUMBER	ITEM
TOL UNLESS SPECIFIED .XX ± .005 .XXX ± .005 ANGLES	TROMPETER ELECTRONICS, INC.	ADAPTERS: BJ77/TL/FL/377	TO COMPLETE *150* SERIES
DWN RAG 6/1/88	MATERIAL CODE IDENT	DRAWING NO.	REV
CHK 6/1/88	14949	22-16	A
ENGR 6/7-88	SCALE 2/1	DATE 1/30/87	SHEET 1 OF 2
NEXT ASSY APPR 6-7-88			