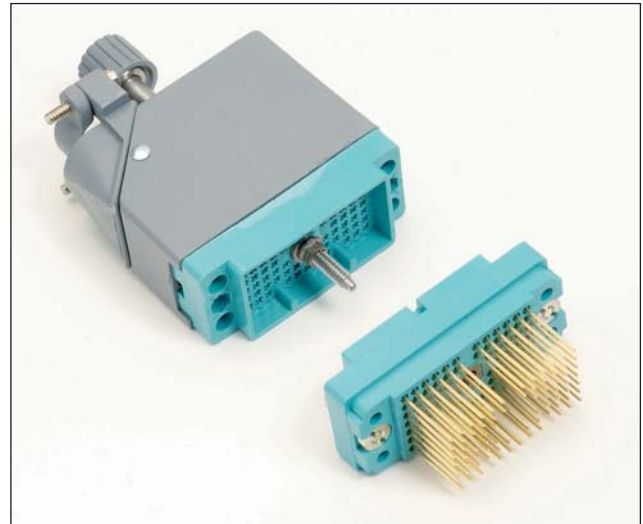


Series 8026 – 0.100" Rectangular Connector

FEATURES

- Economical miniature high-density connectors suitable for high-reliability and military applications.
- 0.100" (2.54mm) square grid rack and panel connectors with male and female insulators are available in four sizes: 33, 75, 117 and 165 contacts.
- Insertable / removable mini-varilok and mini-wrap contacts.
- Crimp and/or solderless wrap terminations.
- Exceptional versatility: all hardware can be mounted on plug or receptacle (see ordering code).
- Actuating screw facilitates mating and unmating; locks mated connectors together.
- Keyed and shrouded insulator design prevents incorrect mating and protects contacts from mishandling.
- Simplified polarizing hardware permits 36 polarization combinations per connector pair.
- Optional covers with top or side cable entry and clamp.
- Optional cable clamps.
- Choice of any combination of hardware — or no hardware.



TECHNICAL SPECIFICATIONS

CONTACTS

Current Rating:
5 amperes

Contact Resistance:
6 milliohms

Withdrawal Force:
2 to 8 ounces max. per contact

Material:
Phosphor Bronze

Standard Plating:
Gold, 10 microinches min.,
over Nickel,
50-100 microinches

Spacing:
0.100" (2.54mm)

INSULATORS

Insulation Resistance:
5,000 megohms, min.
(diallyl phthalate insulators)
5,000 megohms, min.
(polycarbonate insulators)

Operating Temperature:
-40°C to +120°C

Dielectric Withstanding Voltage:
Sea Level: 1,000 Volts rms

Materials:
0.100" (2.54mm) spacing –
diallyl phthalate, glass-filled,
flame resistant

ORDERING CODE

00

8026

033

Number of Contacts
033 = 33
075 = 75
117 = 117
165 = 165

000

Contact Code

Order crimp contacts separately by Part Number. Otherwise specify contact code 491.
000 = Crimp (3000 - contact reel)



Part Number
60 8216 0323 00 339

000 = Crimp (loose contact)
Accepts #22-30 AWG wire



Part Number
60 8216 0313 00 339

491 = Wire wrappable removable contact .025" (.635mm) sq. x .564" (14.33mm) tail



Part Number
60 8216 0413 00 339

803

Variation Code

Add 050 to order alternative keying (Pin & Socket)
i.e. 701 = Standard hermaphroditic keying
751 = Pin and socket keying
Complete a 15 digit assembly number for each mating part, male and female.

Series 8026 – 0.100" Rectangular Connector

VARIATION CODES

**33 Contacts
Table 1**

| Insulator Body Type | Variation Code No. | Actuating Screw | Fixed Nut | Keying Hardware | Cover |
|-------------------------------|--------------------|-----------------|-----------|-----------------|-------|
| Male (Exposed Contacts) | 701 | Yes | No | Yes | No |
| | 702 | Yes | No | No | No |
| | 703 | No | Yes | Yes | No |
| | 704 | No | Yes | No | No |
| | 733 | No | No | Yes | No |
| | 734 | No | No | No | No |
| Female (Recessed Contacts) | 801 | No | Yes | Yes | No |
| | 802 | No | Yes | No | No |
| | 803 | Yes | No | Yes | No |
| | 804 | Yes | No | No | No |
| | 833 | No | No | Yes | No |
| | 834 | No | No | No | No |

**33 Contacts
Table 2**

| Insulator Body Type | Variation Code No. | Actuating Nut | Fixed Nut | Keying Hardware | Cover |
|-------------------------------|--------------------|---------------|-----------|-----------------|-------|
| Male (Exposed Contacts) | 503 | No | Yes | Yes | No |
| | 504 | No | Yes | No | No |
| Female (Recessed Contacts) | 601 | No | Yes | Yes | No |
| | 602 | No | Yes | No | No |

**75, 117 & 165 Contacts
Table 3**

| Insulator Body Type | Variation Code No. | | | Cable Entrance | Actuating Screw | Fixed Nut | Keying Hardware | |
|----------------------------|-------------------------------|-------------------|-------------------|----------------|-----------------|-----------|-----------------|-----|
| | Without Cover | Cover Small Clamp | Cover Large Clamp | | | | | |
| Male (Exposed Contacts) | 701 | — | — | No | Yes | No | Yes | |
| | 702 | — | — | No | Yes | No | No | |
| | 703 | — | — | No | No | Yes | Yes | |
| | 704 | — | — | No | No | Yes | No | |
| | 733 | — | — | No | No | No | Yes | |
| | 734 | — | — | No | No | No | No | |
| | — | 705 | 713 | Top | Yes | No | Yes | |
| | — | 706 | 714 | Side | Yes | No | Yes | |
| | — | 707 | 715 | Top | Yes | No | No | |
| | — | 708 | 716 | Side | Yes | No | No | |
| | — | 709 | 717 | Top | No | Yes | Yes | |
| | — | 710 | 718 | Side | No | Yes | Yes | |
| | — | 711 | 719 | Top | No | Yes | No | |
| | — | 712 | 720 | Side | No | Yes | No | |
| | — | 735 | 739 | Top | No | No | Yes | |
| | — | 736 | 740 | Side | No | No | Yes | |
| | — | 737 | 741 | Top | No | No | No | |
| | — | 738 | 742 | Side | No | No | No | |
| | Female (Recessed Contacts) | 801 | — | — | No | No | Yes | Yes |
| | | 802 | — | — | No | No | Yes | No |
| 803 | | — | — | No | Yes | No | Yes | |
| 804 | | — | — | No | Yes | No | No | |
| 833 | | — | — | No | No | No | Yes | |
| 834 | | — | — | No | No | No | No | |
| — | | 805 | 813 | Top | No | Yes | Yes | |
| — | | 806 | 814 | Side | No | Yes | Yes | |
| — | | 807 | 815 | Top | No | Yes | No | |
| — | | 808 | 816 | Side | No | Yes | No | |
| — | | 809 | 817 | Top | Yes | No | Yes | |
| — | | 810 | 818 | Side | Yes | No | Yes | |
| — | | 811 | 819 | Top | Yes | No | No | |
| — | | 812 | 820 | Side | Yes | No | No | |
| — | | 835 | 839 | Top | No | No | Yes | |
| — | | 836 | 840 | Side | No | No | Yes | |
| — | | 837 | 841 | Top | No | No | No | |
| — | | 838 | 842 | Side | No | No | No | |

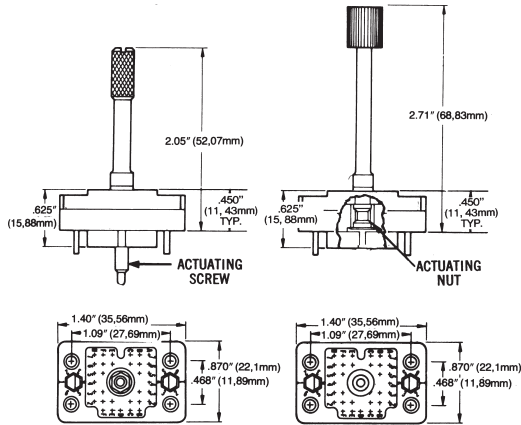
Series 8026 – 0.100" Rectangular Connector

33 CONTACTS

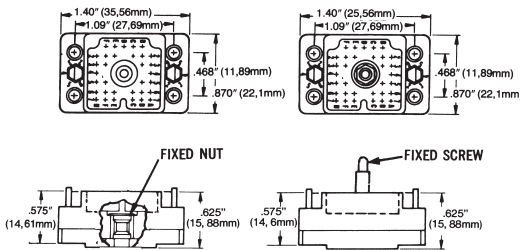
Female Plug (Recessed Contacts)
For variation code number

See Table 1
Page 29

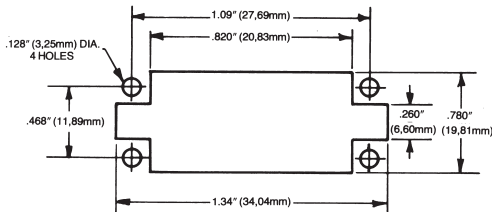
See Table 2
Page 29



MALE RECEPTACLE (Exposed Contacts)



RECOMMENDED CHASSIS LAYOUT

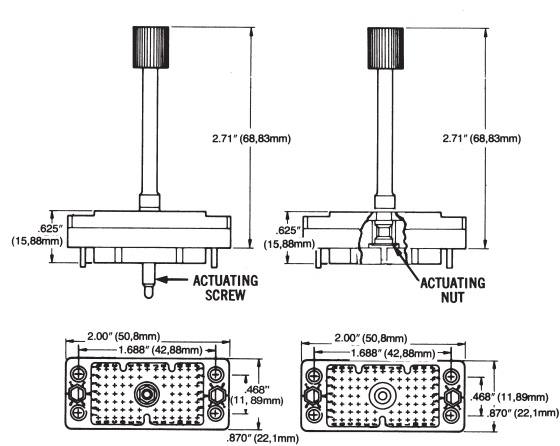


75 CONTACTS

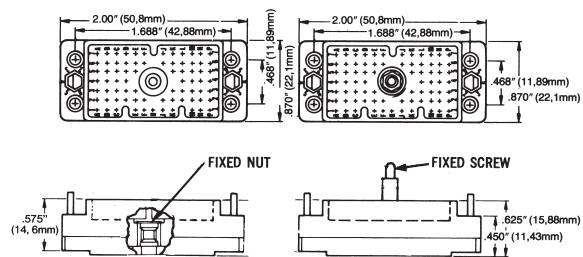
Female Plug (Recessed Contacts)
For variation code number

See Table 3
Page 29

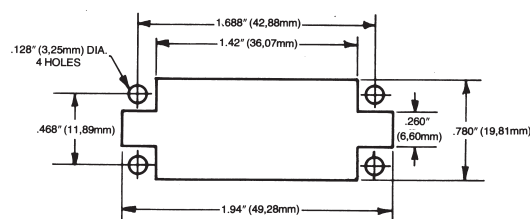
See Table 4
Page 29



MALE RECEPTACLE (Exposed Contacts)



RECOMMENDED CHASSIS LAYOUT



SERIES 8026 COVER CROSS REFERENCE. FOR DETAILS SEE PAGE 21

| Cover Number | Cable Entrance | Clamp | |
|---------------------|----------------|-------------|-------------------------|
| | | Description | 8026/.100" (2.54mm) sq. |
| 30 8016 9821 00 000 | Side | Small | 75 Pin |
| 30 8016 9822 00 000 | Top | Small | 75 Pin |
| 30 8016 9823 00 000 | Side | Small | 117 Pin |
| 30 8016 9824 00 000 | Top | Small | 117 Pin |
| 30 8016 9825 00 000 | Side | Large | 75 Pin |
| 30 8016 9826 00 000 | Top | Large | 75 Pin |
| 30 8016 9827 00 000 | Side | Large | 117 Pin |
| 30 8016 9828 00 000 | Top | Large | 117 Pin |
| 30 8016 9832 00 000 | Side | Large | 165 Pin |

| Cover Number | Cable Entrance | Clamp | |
|---------------------|----------------|-------------|-------------------------|
| | | Description | 8026/.100" (2.54mm) sq. |
| 30-8016-9833 00 000 | Top | Large | 165 Pin |
| 30-8016-9838 00 000 | Side | Ex-Large | 75 Pin |
| 30-8016-9839 00 000 | Top | Ex-Large | 75 Pin |
| 30-8016-9840 00 000 | Side | Ex-Large | 117 Pin |
| 30-8016-9842 00 000 | Top | Ex-Large | 117 Pin |
| 30-8016-9843 00 000 | Side | Ex-Large | 165 Pin |
| 30-8016-9844 00 000 | Top | Ex-Large | 165 Pin |
| 30-8016-9845 00 000 | Side | Ex-Large | — |
| 30-8016-9846 00 000 | Top | Ex-Large | — |

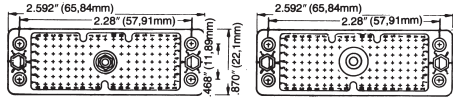
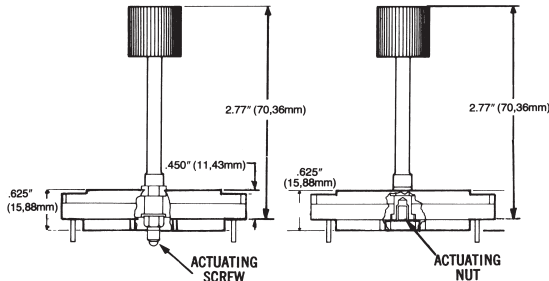
Series 8026 – 0.100" Rectangular Connector

117 CONTACTS Female Plug (Recessed Contacts)

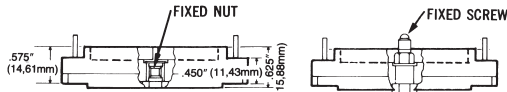
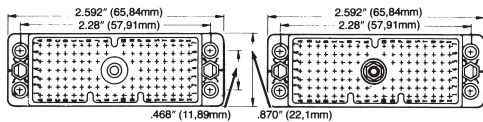
For variation code number

See Table 3
Page 29

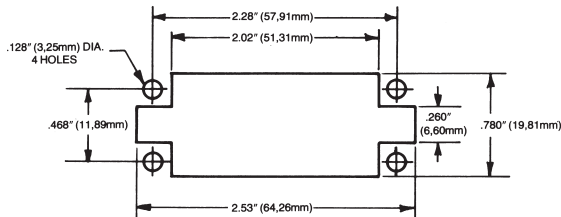
See Table 4
Page 29



MALE RECEPTACLE (Exposed Contacts)



RECOMMENDED CHASSIS LAYOUT

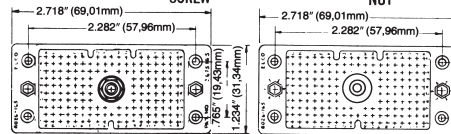
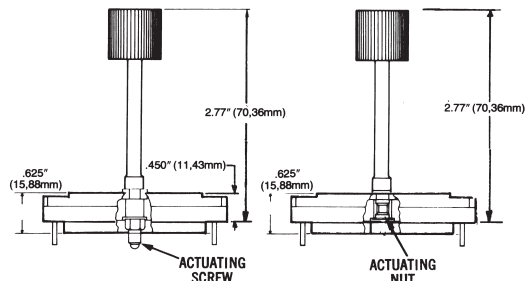


165 CONTACTS Female Plug (Recessed Contacts)

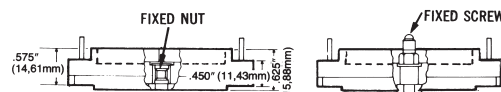
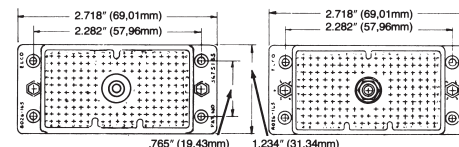
For variation code number

See Table 3
Page 29

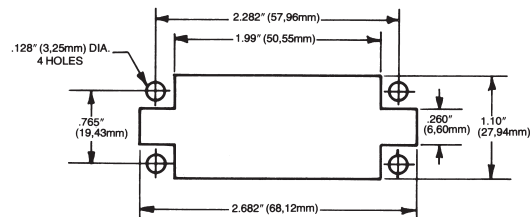
See Table 4
Page 29



MALE RECEPTACLE (Exposed Contacts)



RECOMMENDED CHASSIS LAYOUT



POLARIZATION CODE

Polarizing pins, when desired, are factory set in position #1. Customer can reset as shown below, use tool No. 06 1989 02. To order factory settings other than position #1, fill out

the "Polarizing Code" below and submit it along with the completed connector ordering code.

P

Insulator Body Type
P = Male, R = Female

LS

Left Side Pin

5

Left Side Pin Position
1 through 6

RS

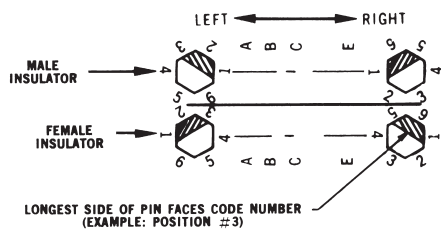
Right Side Pin

3

Right Side Pin Position
1 through 6

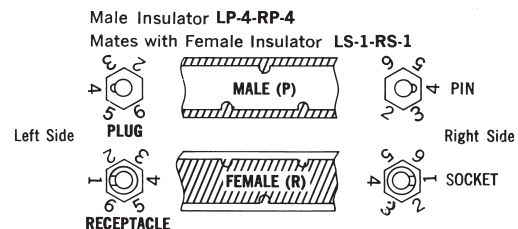
POLARIZATION / KEYING

EXAMPLE: P-LS-5-RS-3 Mates with R-LS-5-RS-3 as shown below



ALTERNATIVE KEYING

EXAMPLE (PIN & SOCKET)



NOTE: Same size of pin and socket keying hardware are used on all existing 8026 connectors (33, 75, 117, 165) – both sides