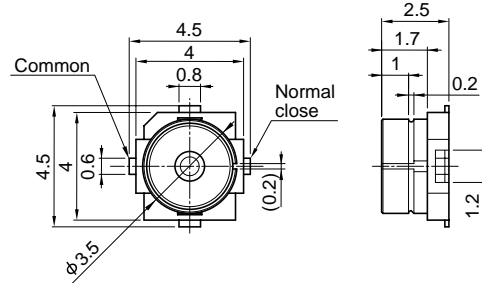


# RF Coaxial Connector with Switch (SMT), TS-2 Series <2GHz>



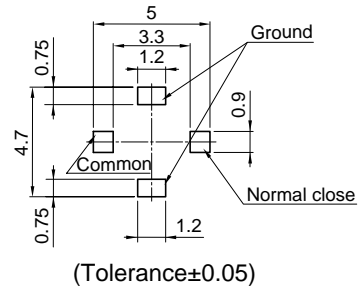
## ● Receptacle CRS 5001-0904



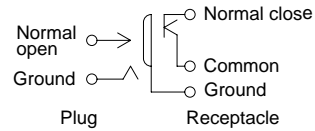
### ■ Features

1. An SMT-ready straight connector with a switch. Adjustment and characteristic verification of mobile communications equipment can be automated.
2. Only 2.5mm in height with a 4.5mm X 4.5mm footprint.
3. An operating range of DC through 2GHz can be covered.
4. Plugs come in two options, for either automatic or manual inspection.
5. Loss as low as 0.6dB

### ■ Applicable Board Pattern



### ■ Coaxial Switch Circuit



### ■ Note

1reel=3,000pcs

### ■ Specifications

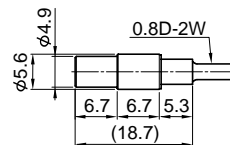
1. Rated Voltage : 100V AC / DC
2. Operating Frequency Range : DC to 2GHz
3. Characteristic Impedance : 50 $\Omega$
4. V.S.W.R. : 1.45 max.
5. Insertion Loss : 0.6dB max.
6. Operating Temperature Range :  $-10^{\circ}\text{C}$  to  $+60^{\circ}\text{C}$

### ■ Material and Plating

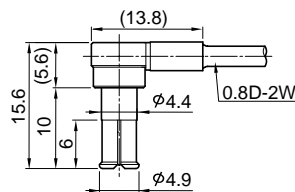
- Housing : Thermoplastic Resin
- Terminal : Copper Alloy, Selective Gold Plating

## ● Plug

### CRC 9001-1201 (Probe Type)



### CRC 9001-1302 (Connection Type)



### CRC 1001-0301 (SMA Adapter)

