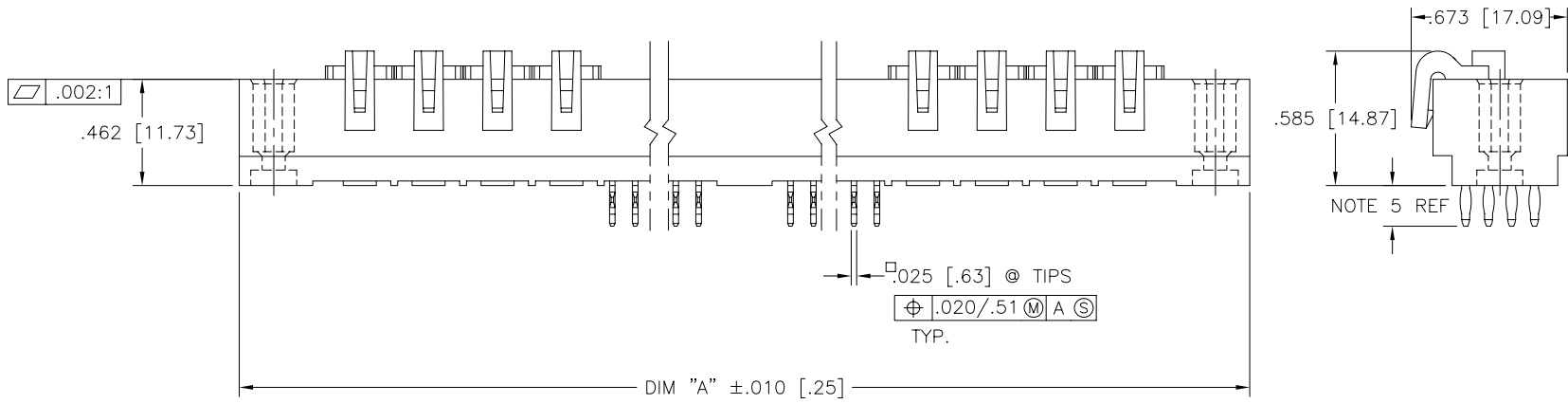
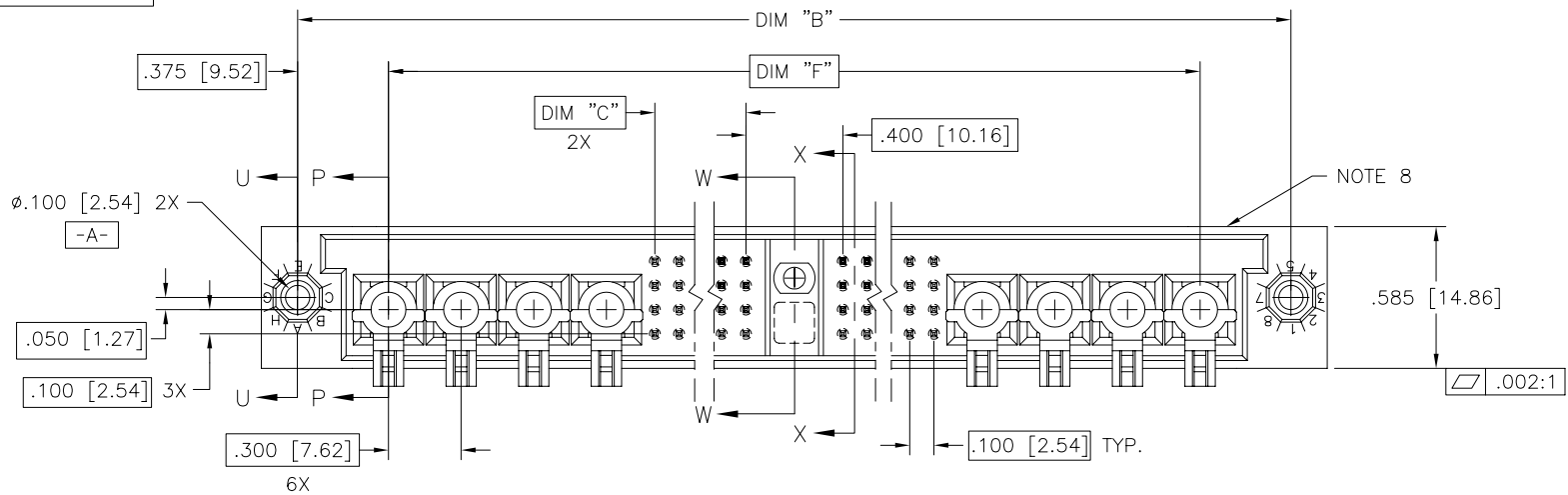


PRODUCT NUMBER
SEE NOTE 1



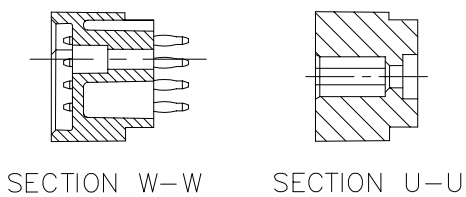
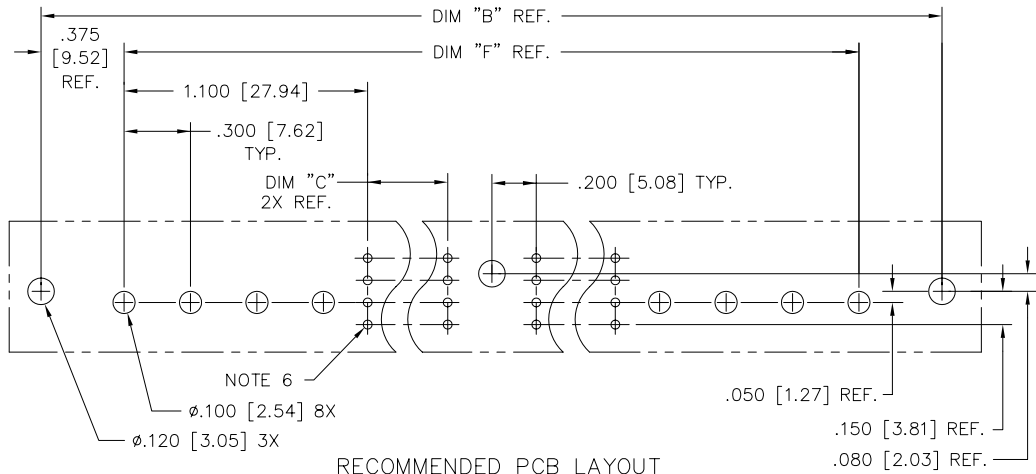
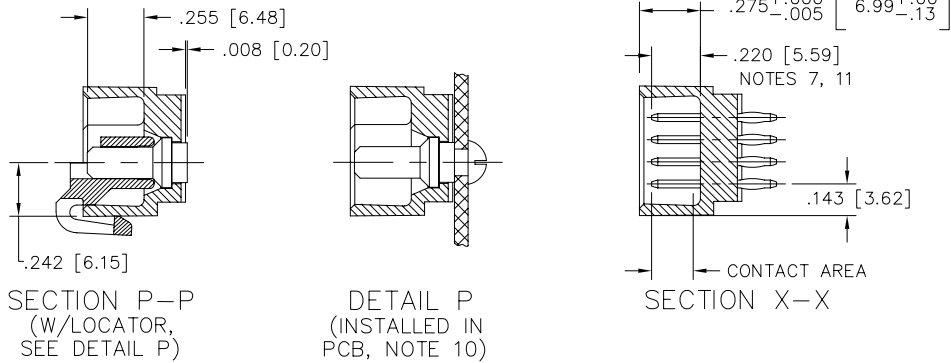
FCIconnect.com

Copyright FCI

mat'l. code		surface		tolerance		projection		product family	
NOTE 3		ISO 1302 ✓		ISO 406 ISO 1101				HPC	
ltr		ecn no		date		tolerances unless otherwise specified		title	
A	V22185	RDS	5/11/92	angles		.xx±.01/.3		4 ROW VERTICAL HEADER	
B	V40260	PDP	1/14/94	linear		.xxx±.005/.13		PRESS FIT, 1 G.P., 8 P.P.	
C	V41237	GAH	8/17/94	0'±2'		.xxx±.0020/.05		dwg no	
D	V91067	DLW	5/20/99	dr		D.SHEAFFER 5/7/92		sheet 1 of 2 size	
E	V00273	JWS	2/1/00	engr		S.CLARK 5/11/92		50519	
F	M06-0260	MHT	7/07/06	chr		S.CLARK 5/11/92		A3	
sheet		revision		F		F		type	
index		sheet		1		2		Product Customer Drawing	

PRODUCT NUMBER	DIM.	LENGTH FORMULAS
SEE NOTE 1	DIM "A"	.100/2.54 x NO. OF COLUMNS + 3.45/87.6
	DIM "B"	.100/2.54 x NO. OF COLUMNS + 3.150/80.01
	DIM "C"	.100/2.54 x NO. OF COLUMNS DIVIDED BY 2 - .100/2.54
	DIM "F"	.100/2.54 x NO. OF COLUMNS + 2.400/60.96

- NOTES:
- ① PRODUCT NUMBERING CODE:
 50519 - X YYY Z
 TAIL LENGTH (NOTE 5)
 NO. OF POSITIONS (NOTE 2)
 PLATING (NOTE 4)
 BASE NUMBER
- PRODUCT NUMBERING CODE FOR SELECT LOAD PART NUMBERS:
 50519 - XYYYY
 SEQUENCE NUMBER ALWAYS "XX"
 BASE NUMBER
- ② THIS PRODUCT IS CONFIGURED IN SIZES OF 20 THRU 120 COLUMNS IN INCREMENTS OF TWO. i.e.: 20,22,24,26,.....,118,120,120.
- ③ HOUSING MATERIAL: GLASS AND MINERAL FILLED HIGH TEMP. THERMOPLASTIC. FLAME RETARDANT PER UL94V-0. COLOR: BLACK.
 PIN MATERIAL: PHOS BRONZE
- ④ PLATING CONTACT AREA OPTIONS:
 A = 50u" Ni UNDER ALL WITH 30u" Au ON CONTACT AREA, SnPb ON PCB INTERFACE AND Au FLASH ON ALL OTHER AREAS.
 C = 50u" Ni UNDER ALL WITH 30u" Au ON CONTACT AREA, SnPb ON PCB INTERFACE, 30u" ON TAIL SIDE CONTACT AREA, AND Au FLASH ON ALL OTHER AREAS.
- ⑤ TAIL LENGTH OPTIONS:
 FOR PLATING OPTION "A":
 A = .177/4.5
 G = .250/6.35
 FOR PLATING OPTION "C":
 C = .533/13.54
 D = .733/18.62
- ⑥ ϕ .0453/1.151 DRILLED HOLE PLATED WITH .0003/.007 MIN. SnPb OVER .001/.03 TO .003/.08 Cu. PLATING TO ACHIEVE A ϕ .040 \pm .003/1.02 \pm .08 HOLE.
- ⑦ TO ASSURE PROPER INSTALLATION: TOOLING, AS SPECIFIED IN INSTRUCTION MANUAL 155915-001 MUST BE USED. PIN MATING LENGTH WILL BE \pm .002/.05 AFTER INSTALLATION.
- ⑧ MANUFACTURERS NAME, PART NUMBER AND LOT CODE TO APPEAR ON THIS SURFACE PER BUS-12-108.
9. FOR DOCUMENTATION MENU, SEE BUS-01-057.
- ⑩ POWER PIN LOCATOR (REF. 50234) TO BE REMOVED AFTER INSTALLATION.
- ⑪ REFERENCE 50805 FOR F.M.L.B. OPTIONS AND WORKSHEET.



mat'l. code		surface ISO 1302 <input checked="" type="checkbox"/>	tolerance ISO 406 ISO 1101	projection 	product family HPC
ltr		tolerances unless otherwise specified		INCH/MM	title 4 ROW VERTICAL HEADER PRESS FIT, 1 G.P., 8 P.P.
ec	no	angles	linear		
date		0'±2'	.xx±.01/.3 .xxx±.005/.13 .xxxx±.0020/.051	scale 1:1	sheet 2 of 2 size
dr		D.SHEAFFER	5/7/92		dwg no
enrg		S.CLARK	5/11/92		50519
chr		S.CLARK	5/11/92		A3
appd		S.CLARK	5/11/92		type Product Customer Drawing
sheet index	revision sheet				

FCI
FCIconnect.com

Copyright FCI