

REV. S

DIMENSIONS ARE IN INCHES UNLESS OTHERWISE NOTED TOLERANCES ARE:
 ONE PLACE DECIMALS ± .1[2.5] THREE PLACE DECIMALS ± .005[.127] ANGLES ± 2°
 TWO PLACE DECIMALS ± .01[.25] FOUR PLACE DECIMALS ± .0020[.051]

TITLE: ELEVATED 2MM C.L. ASM SOCKET

DWG NO: YTE-1XX-XX-XXX-X-XXX-XXX-XX SHEET 1 OF 2

YTE-1XX-XX-XXX-X-XXX-XXX-XX

POSITION SPECIFICATION
 -02 THRU -50 POSITIONS PER ROW (SEE NOTE 1)

LEAD STYLE SPEC
 -02: USE C-79-02-XXX
 -03: USE C-79-53-XXX

PLATING SPECIFICATION
 -F: FLASH SELECTIVE GOLD (USE C-79-XX-F)
 -L: LIGHT SELECTIVE (USE C-79-XX-L)
 -G: GOLD (USE C-79-XX-G)
 -S: SELECTIVE (USE C-79-XX-S)
 -M: MEDIUM SELECTIVE (USE C-79-XX-M)
 -H: HEAVY GOLD (USE C-79-XX-H)
 -TL: TIN LEAD (USE C-79-XX-TL)
 -STL: SELECTIVE TIN LEAD (USE C-79-XX-STL)
 -SM: HEAVY SELECTIVE GOLD, MATTE TIN TAIL (USE C-79-XX-S)
 -LM: LIGHT SELECTIVE GOLD, MATTE TIN TAIL (USE C-79-XX-L)
 -FM: FLASH SELECTIVE GOLD, MATTE TIN TAIL (USE C-79-XX-F)
 -MM: GOLD, MATTE TIN TAIL (USE C-79-XX-MM)

OPTION
 ** -MW: METAL WASHER (SEE FIG. 2, SHT. 2)
 (5 POS. MIN, 30 POS MAX)
 (.090 [2.29] MIN, .482 [12.19] MAX TAIL)

POLARIZATION OPTION
 -XXX INDICATES POSITION (SEE FIG 3, SHT. 2) (USE PK-07)

SPACE OPTION
 .340 [8.64] MIN FOR -Q ROW
 .375 [9.53] MIN FOR -5 & -6 ROWS
 "B" MAX (SEE TABLE 2)

ROW SPECIFICATION
 -Q: QUAD (SEE -Q)
 -5: FIVE (SEE -5)
 -6: SIX (SEE -6)

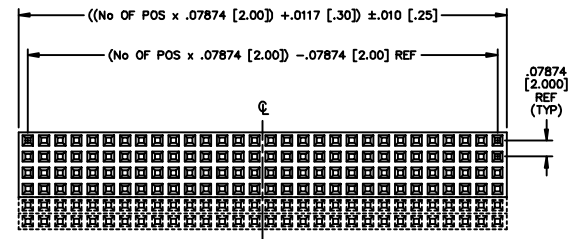
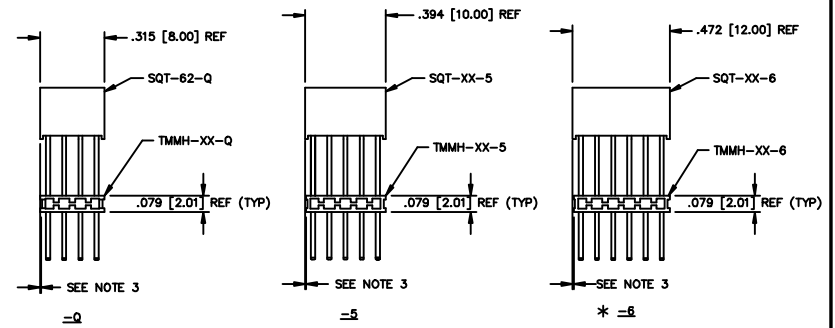
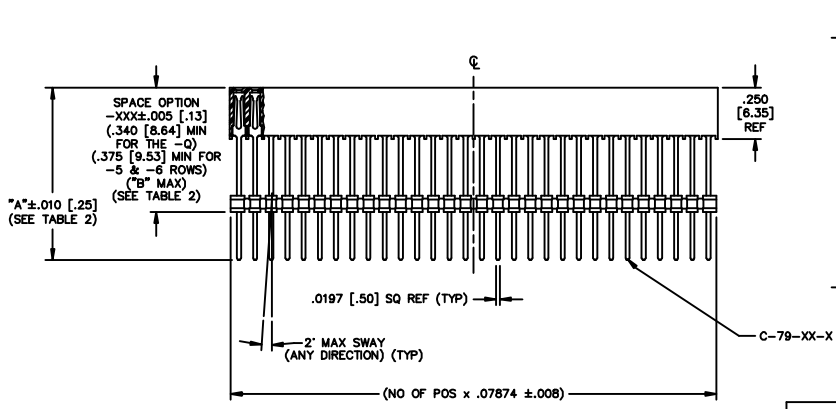


FIG. 1

DO NOT SCALE FROM THIS PRINT



LEAD STYLE	"A"	"B"
-02	.850 [21.59]	.800 [20.32]
-03	.458 [11.63]	.408 [10.36]

- NOTE:
1. TOOLING TO BE DESIGNED TO PRODUCE UP TO 61 POSITIONS.
 2. THIS NOTE WAS DELETED.
 3. TMMH BODIES ARE NOT TO BE MORE THAN ±.005 [.13] FROM PLANE SET BY SQT BODY.

PROPRIETARY NOTE
 THIS DOCUMENT CONTAINS INFORMATION CONFIDENTIAL AND PROPRIETARY TO SAMTEC INC. AND SHALL NOT BE REPRODUCED OR TRANSFERRED TO OTHER DOCUMENTS OR DISCLOSED TO OTHERS OR USED FOR ANY PURPOSE OTHER THAN THAT FOR WHICH IT WAS OBTAINED WITHOUT THE EXPRESSED WRITTEN CONSENT OF SAMTEC INC.

CONTACT: PHOS BRONZE
 MATERIAL: LCP
 COLOR: BLACK

520 PARK EAST BLVD. NEW ALBANY, INDIANA 47150
 PHONE (812) 944-6733 P.O. BOX 1147
 CODE 55322

MADE BY: BRATCHER 1-26-99

YTE-1XX-XX-XXX-X-XXX-XXX-XX SHEET 1 OF 2

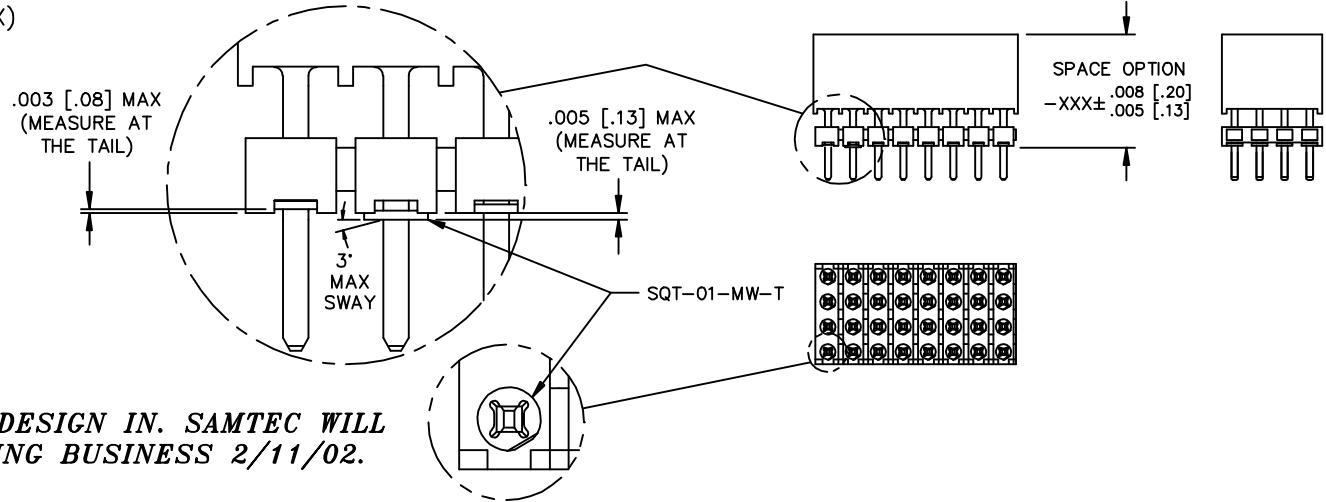
PLOT SCALE: 1=.44 / DIMSCALE: .3

REV S

FIG. 2

-MW: METAL WASHER
(ONE PER POSITION)
(5 POS. MIN, 30 POS. MAX)

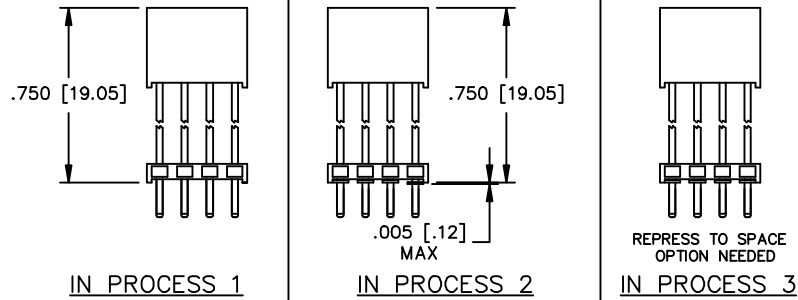
DIMENSIONS ARE IN INCHES		UNLESS OTHERWISE NOTED		TOLERANCES ARE:		TITLE: ELEVATED	DWG NO: YTE-1XX-XX-XXX-X-XXX-XXX-XX
ONE PLACE DECIMALS ± .1[2.5]		THREE PLACE DECIMALS ± .005[.127]		ANGLES ± 2°		2MM C.L. ASM	SHEET 2 OF 2
TWO PLACE DECIMALS ± .01[.25]		FOUR PLACE DECIMALS ± .0020[.051]				SOCKET	



DO NOT SCALE FROM THIS PRINT

**** - MW OPTION, DO NOT DESIGN IN. SAMTEC WILL ONLY SUPPORT EXISTING BUSINESS 2/11/02.**

-02 STYLE ONLY



STYLE	ROW	NO. OF POS.	PKG TUBE	TUBE PLUG
-02	-Q	15-50	PT-1-24-03-51	TP-13
-03	-Q	15-50	PT-1-24-16-29	TP-07
-02, -03	-Q	02-14	LAYER PACKAGING	
-02	-5	15-50	PT-1-24-01-56	TP-31
-03	-5	15-50	PT-1-24-01-08	TP-13
-02, -03	-5	02-14	LAYER PACKAGING	
-02	-6	15-50	PT-1-24-02-74	TP-13
-03	-6	15-50	PT-1-24-01-08	TP-13
-02, -03	-6	02-14	LAYER PACKAGING	

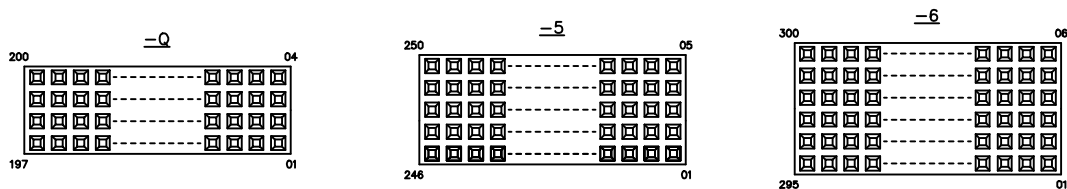


FIG. 3

POLARIZATION OPTION LOCATION
INSERT PK-07 INTO SPECIFIED POSITION AND BREAK OFF TAB

NOTE:
1. MINIMUM CONTACT RETENTION: 0.5 LB PER PIN.

PROPRIETARY NOTE

THIS DOCUMENT CONTAINS INFORMATION CONFIDENTIAL AND PROPRIETARY TO SAMTEC INC. AND SHALL NOT BE REPRODUCED OR TRANSMITTED TO OTHER DOCUMENTS OR DISCLOSED TO OTHERS OR USED FOR ANY PURPOSE OTHER THAN THAT FOR WHICH IT WAS OBTAINED WITHOUT THE EXPRESSED WRITTEN CONSENT OF SAMTEC INC.

PLOT SCALE: 1=.44 / DIMSCALE: .3



520 PARK EAST BLVD. NEW ALBANY, INDIANA 47150
PHONE (812) 944-6733 P.O. BOX 1147
CODE 55322

MADE BY: BRATCHER 1-26-99

YTE-1XX-XX-XXX-X-XXX-XXX-XX
SHEET 2 OF 2