

# SMD BANDSWITCH DIODES

## DESCRIPTION

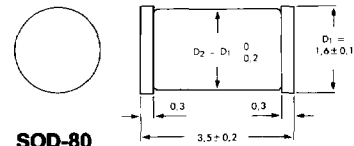
- Philips Components bandswitch diodes are intended specifically for use in radio, television, and other tuning applications. Primary attributes are extremely low dynamic capacitance and series resistance.

## FEATURES

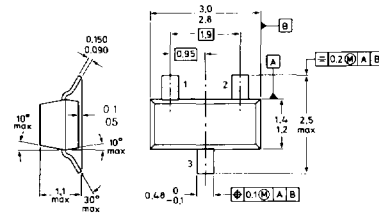
- Guaranteed maximum dynamic capacitance as low as 1.2 pF at 3V reverse voltage
- Guaranteed maximum dynamic resistances as low as  $0.7\Omega$  at 3 mA
- SOD-80 for low-cost, hermetic glass packaging

## MECHANICAL DATA

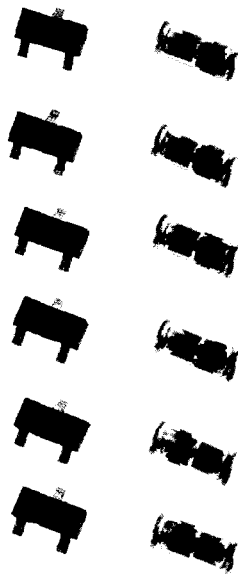
(Dimensions in mm)



SOD-80



SOT-23 TOP VIEW

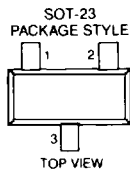


## SMD BANDSWITCH DIODES

### ELECTRICAL SPECIFICATIONS

TYPE	PACKAGE	RATINGS		$C_d$ (max)		$r_D$ (max)			PINOUT
		$V_R$ V	$I_F$ mA	pF	@ $V_R$ V	$\Omega$	@ $I_F$ mA	@f MHz	
BA423L	SOD-80	20	50	3.5	6	1.5	10	1	—
BA682	SOD-80	35	100	1.25	3	0.7	3	200	—
BA683	SOD-80	35	100	1.20	3	1.2	3	200	—
BAT18	SOT-23	35	100	1.00	20	0.7	5	200	H

### PINOUT DIAGRAMS



PINOUT H: SOT-23      PIN 1      PIN 2      PIN 3  
N.C.      A      K

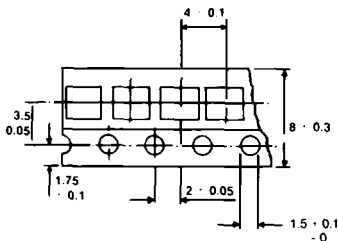
### MARKING CODES

Type No.	Code or Stripe Color
BA423L	Green and Red Stripes
BA682	Red Stripe
BA683	Red and Orange Stripes
BAT18	A2

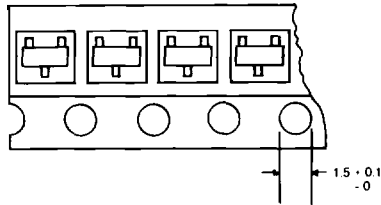
### TAPE AND REEL SPECIFICATIONS

(Dimensions in mm)

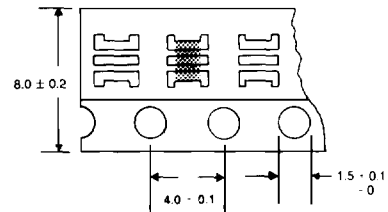
SM Package	Devices per reel	Reel Size (in)	Tape Width (mm)	Ordering Suffix
SOT-23	3K	7	8	TRL
	10K	13	8	TRL 13
SOD-80	2.5K	7	8	TRL
	10K	13	8	TRL 13



**SOT-23**  
TAPE DIMENSIONS



**SOT-23**  
ORIENTATION



**SOD-80**  
TAPE DIMENSIONS  
AND ORIENTATION  
(STANDARD DIODE ORIENTATION IS  
CATHODE BAND AT SPROCKET HOLE SIDE)