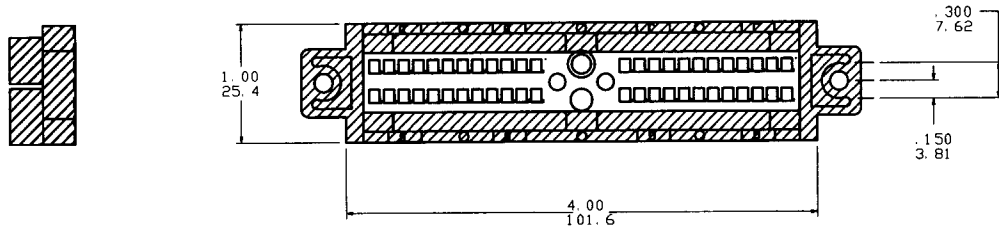
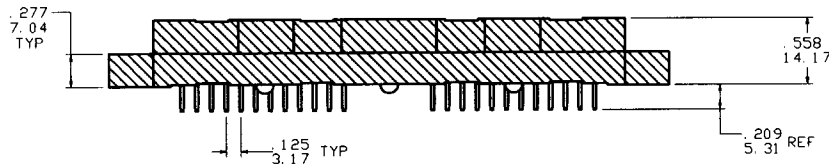
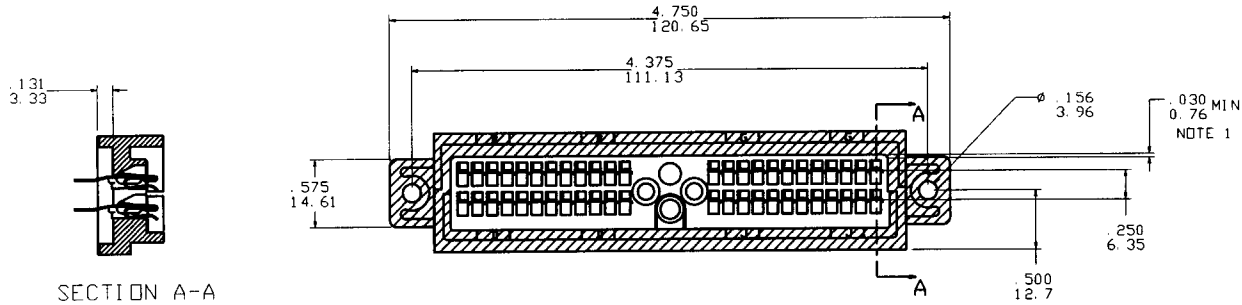


PRODUCT NUMBER	MATERIAL	
90803-001	ABS / POLYCARBONATE	OBSOLETE
90803-001 A	POLYETHERIMIDE	



NOTES:

- ① PART IS TO BE METALIZED WITH 99.99% PURE ALUMINUM #01-011. ONLY THE OUTSIDE OF THE HOUSING SHALL BE METALIZED. THERE SHALL BE NO SIGNS OF METALIZATION WITHIN .03/.8 OF THE SERPENT CAVITIES. TYP BOTH SIDES.

REVISIONS				SHEET INDEX	ISSUE SH NO.	C							
REV	ECN/DDR#	BY	DATE										
A	V20021	MRC	1/16/92										
B	V50209	MRC	2/14/95										
C	V80222	SAR	2/25/98										

TOLERANCES UNLESS OTHERWISE SPECIFIED		MAT	DR	DATE	CUSTOMER COPY
.00±.005 / .002-.13			J.MUSTARD	4/4/91	
.0000±.0020 / .000±.051		FINISH	H.SUNDY	1/16/92	
LINEAR		PRODUCT FAMILY	CHK	1/16/92	THIRD ANGLE PROJ
		SERPENT	H.SUNDY	1/16/92	UNIT INCH MM
ANGLES	0±7	DATE CODE	APPRO	1/16/92	SCALE SIZE DWG. NO. SHEET
		22526	H.SUNDY		2:1 D 90803 1 OF 1

BERG
ELECTRONICS

TITLE: SOLDER TAB METALLIZED SERPENT ASS'Y. "A"