



**Non-Insulated Terminals  
Feed-Thru Turret Miniature  
& Subminiature**

Please refer to Figure 1290

Part No.	Board Thick	Mounting Hole Dia +.003 -.001	D Nom	L Nom	Swage Tool
1290A	.031	.116	.114	.075	1290
1290B	.062	.116	.114	.105	1290
1290C	.094	.116	.114	.135	1290
1290D	.125	.116	.114	.165	1290

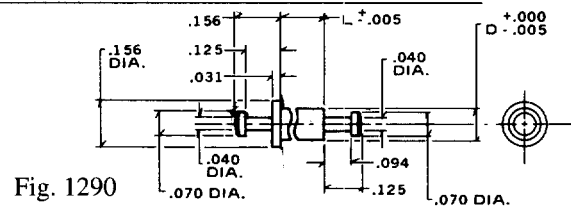


Fig. 1290

Please refer to Figure 2040

Part No.	Board Thick	Mounting Hole Dia +.003 -.001	D Nom	L Nom	Swage Tool
2040A	.031	.128	.126	.075	2040
2040B	.062	.128	.126	.105	2040
2040C	.094	.128	.126	.135	2040
2040D	.125	.128	.126	.165	2040

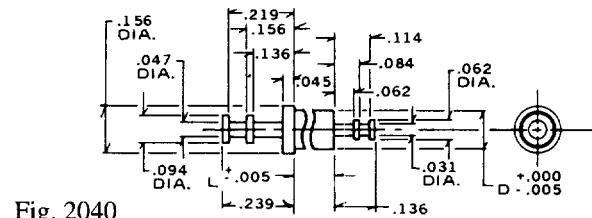


Fig. 2040

Please refer to Figure 1360

Part No.	Board Thick	Mounting Hole Dia +.003 -.001	D Nom	L Nom	Swage Tool
1360C	.094	.206	.204	.135	1360
1360D	.125	.206	.204	.165	1360

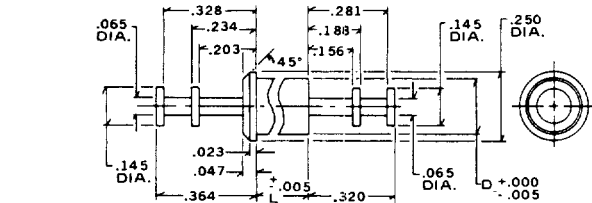


Fig. 1360

Please refer to Figure 2530

Part No.	Board Thick	Mounting Hole Dia +.003 -.001	D Nom	L Nom	Swage Tool
2530A	.031	.075	.073	.053	2530
2530B	.062	.075	.073	.084	2530
2530C	.094	.075	.073	.115	2530
2530D	.125	.075	.073	.147	2530

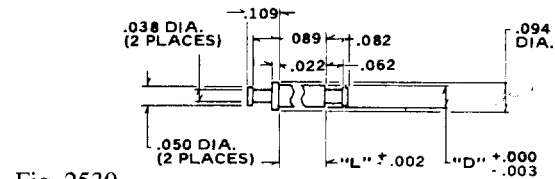


Fig. 2530

Please refer to Figure 2509

Part No.	Board Thick	Mounting Hole Dia +.003 -.001	D Nom	L Nom	Swage Tool
2509A	.031	.075	.073	.053	2509
2509B	.062	.075	.073	.084	2509
2509C	.094	.075	.073	.115	2509
2509D	.125	.075	.073	.147	2509

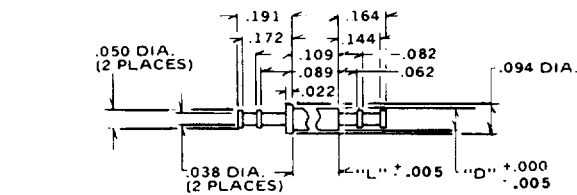


Fig. 2509

Please refer to Figure 2510

Part No.	Board Thick	Mounting Hole Dia +.003 -.001	D Nom	L Nom	Swage Tool
2510A	.031	.075	.073	.053	2510
2510B	.062	.075	.073	.084	2510
2510C	.094	.075	.073	.115	2510
2510D	.125	.075	.073	.147	2510

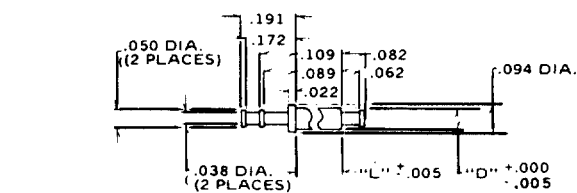


Fig. 2510

**Standard Plating Suffix to Part Number**      **Terminal**  
See Page 93 for all plating options.            -I (Ag over Cu)

TOLERANCE: .xxx ± .005, .xx ± .01 (ALL DIMS. BEFORE PLATING)

