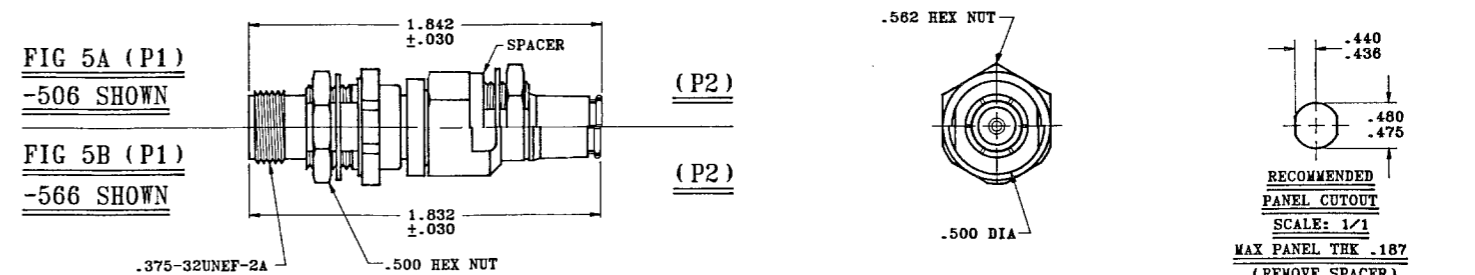
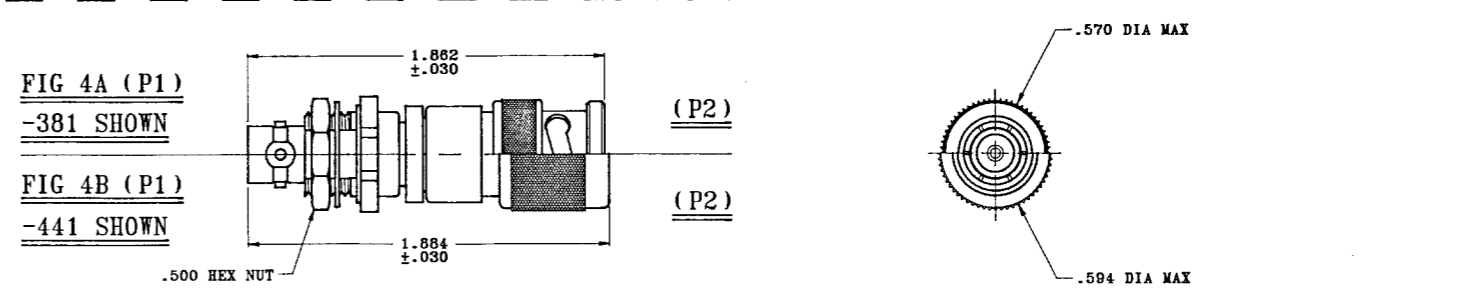
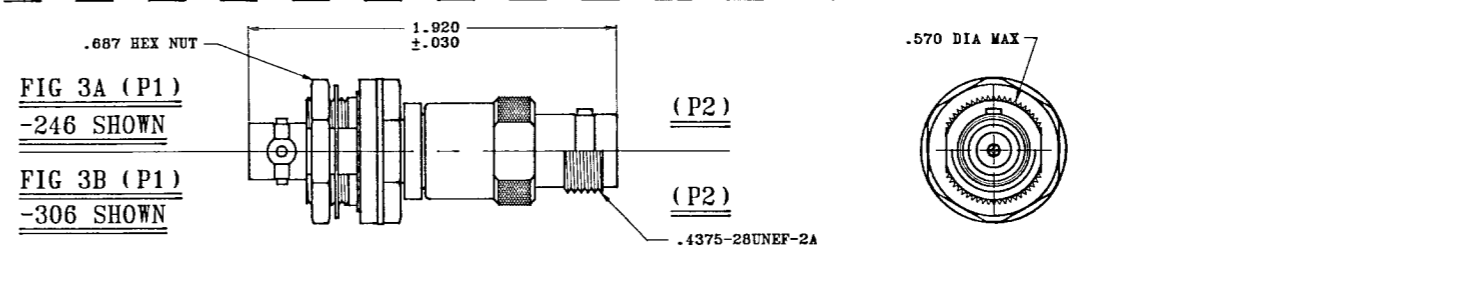
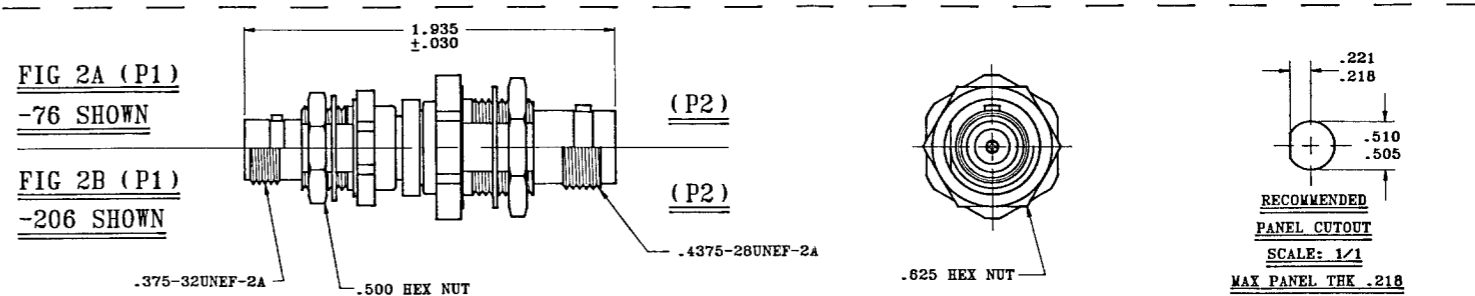
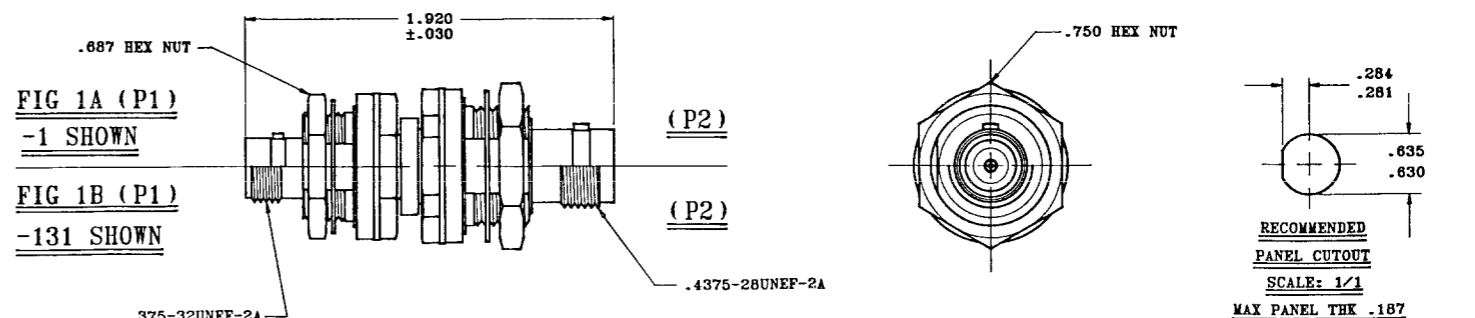
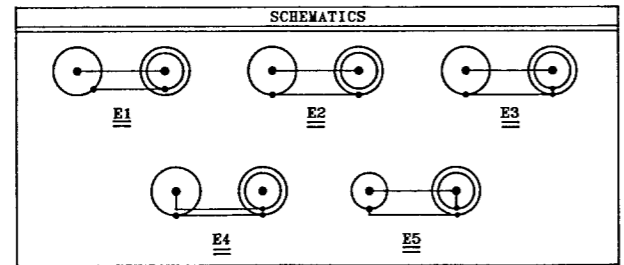
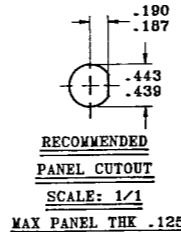
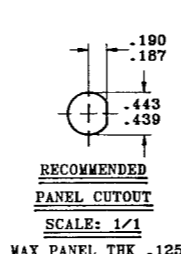
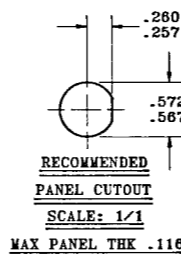
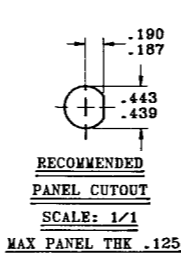
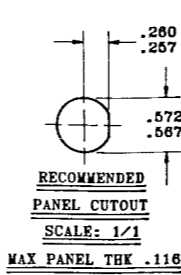


P2 CONN TYPE	FIG NO	P1 CONN TYPE																									INCH	MM					
		BJ154					BJ154FL					BJ3154					BJ159					BJ159FL							BJ3159				
		E1	E2	E3	E4	E5	E1	E2	E3	E4	E5	E1	E2	E3	E4	E5	E1	E2	E3	E4	E5	E1	E2	E3	E4	E5			E1	E2	E3	E4	E5
BJ26	1A	-1	-2	-3	-4	-5	-6	-7	-8	-9	-10	-11	-12	-13	-14	-15	-16	-17	-18	-19	-20	-21	-22	-23	-24	-25	-26	-27	-28	-29	-30	.005	0.13
UBJ26	1A	-31	-32	-33	-34	-35	-36	-37	-38	-39	-40	-41	-42	-43	-44	-45	-46	-47	-48	-49	-50	-51	-52	-53	-54	-55	-56	-57	-58	-59	-60	.030	0.76
BJ29	2A	-61	-62	-63	-64	-65	-66	-67	-68	-69	-70	-71	-72	-73	-74	-75	-76	-77	-78	-79	-80	-81	-82	-83	-84	-85	-86	-87	-88	-89	-90	.116	2.98
UBJ29	2A	-91	-92	-93	-94	-95	-96	-97	-98	-99	-100	-101	-102	-103	-104	-105	-106	-107	-108	-109	-110	-111	-112	-113	-114	-115	-116	-117	-118	-119	-120	.125	3.18
BJ46	1B	-121	-122	-123	-124	-125	-126	-127	-128	-129	-130	-131	-132	-133	-134	-135	-136	-137	-138	-139	-140	-141	-142	-143	-144	-145	-146	-147	-148	-149	-150	.187	4.76
UBJ46	1B	-151	-152	-153	-154	-155	-156	-157	-158	-159	-160	-161	-162	-163	-164	-165	-166	-167	-168	-169	-170	-171	-172	-173	-174	-175	-176	-177	-178	-179	-180	.190	4.83
BJ49	2B	-181	-182	-183	-184	-185	-186	-187	-188	-189	-190	-191	-192	-193	-194	-195	-196	-197	-198	-199	-200	-201	-202	-203	-204	-205	-206	-207	-208	-209	-210	.218	5.54
UBJ49	2B	-211	-212	-213	-214	-215	-216	-217	-218	-219	-220	-221	-222	-223	-224	-225	-226	-227	-228	-229	-230	-231	-232	-233	-234	-235	-236	-237	-238	-239	-240	.221	5.61
CJ20	3A	-241	-242	-243	-244	-245	-246	-247	-248	-249	-250	-251	-252	-253	-254	-255	-256	-257	-258	-259	-260	-261	-262	-263	-264	-265	-266	-267	-268	-269	-270	.257	6.53
UCJ20	3A	-271	-272	-273	-274	-275	-276	-277	-278	-279	-280	-281	-282	-283	-284	-285	-286	-287	-288	-289	-290	-291	-292	-293	-294	-295	-296	-297	-298	-299	-300	.280	6.80
CJ40	3B	-301	-302	-303	-304	-305	-306	-307	-308	-309	-310	-311	-312	-313	-314	-315	-316	-317	-318	-319	-320	-321	-322	-323	-324	-325	-326	-327	-328	-329	-330	.281	7.14
UCJ40	3B	-331	-332	-333	-334	-335	-336	-337	-338	-339	-340	-341	-342	-343	-344	-345	-346	-347	-348	-349	-350	-351	-352	-353	-354	-355	-356	-357	-358	-359	-360	.284	7.21
PL20	4A	-361	-362	-363	-364	-365	-366	-367	-368	-369	-370	-371	-372	-373	-374	-375	-376	-377	-378	-379	-380	-381	-382	-383	-384	-385	-386	-387	-388	-389	-390	.436	11.07
UPL20	4A	-391	-392	-393	-394	-395	-396	-397	-398	-399	-400	-401	-402	-403	-404	-405	-406	-407	-408	-409	-410	-411	-412	-413	-414	-415	-416	-417	-418	-419	-420	.439	11.16
PL40	4B	-421	-422	-423	-424	-425	-426	-427	-428	-429	-430	-431	-432	-433	-434	-435	-436	-437	-438	-439	-440	-441	-442	-443	-444	-445	-446	-447	-448	-449	-450	.440	11.18
UPL40	4B	-451	-452	-453	-454	-455	-456	-457	-458	-459	-460	-461	-462	-463	-464	-465	-466	-467	-468	-469	-470	-471	-472	-473	-474	-475	-476	-477	-478	-479	-480	.443	11.26
PL122	5A	-481	-482	-483	-484	-485	-486	-487	-488	-489	-490	-491	-492	-493	-494	-495	-496	-497	-498	-499	-500	-501	-502	-503	-504	-505	-506	-507	-508	-509	-510	.475	12.07
UPL122	5A	-511	-512	-513	-514	-515	-516	-517	-518	-519	-520	-521	-522	-523	-524	-525	-526	-527	-528	-529	-530	-531	-532	-533	-534	-535	-536	-537	-538	-539	-540	.480	12.19
PL123	5B	-541	-542	-543	-544	-545	-546	-547	-548	-549	-550	-551	-552	-553	-554	-555	-556	-557	-558	-559	-560	-561	-562	-563	-564	-565	-566	-567	-568	-569	-570	.500	12.70
UPL123	5B	-571	-572	-573	-574	-575	-576	-577	-578	-579	-580	-581	-582	-583	-584	-585	-586	-587	-588	-589	-590	-591	-592	-593	-594	-595	-596	-597	-598	-599	-600	.505	12.83

INCH	MM
.005	0.13
.030	0.76
.116	2.98
.125	3.18
.187	4.76
.190	4.83
.218	5.54
.221	5.61
.257	6.53
.280	6.80
.281	7.14
.284	7.21
.436	11.07
.439	11.16
.440	11.18
.443	11.26
.475	12.07
.480	12.19
.500	12.70
.505	12.83
.510	12.95
.562	14.27
.567	14.40
.570	14.48
.572	14.53
.594	15.09
.625	15.88
.630	16.00
.635	16.13
.750	19.05
1.832	46.53
1.842	46.79
1.862	47.29
1.884	47.85
1.920	48.77
1.935	49.15



- EXAMPLE OF COMPLETE MODEL NO:  
AD - BJ154 - E1 - BJ26  
ADAPTER (P1) CONN TYPE (P2) CONN TYPE SCHEMATIC
- EXAMPLE OF COMPLETE PART NO:  
22-14-1  
BASIC PART NO DASH NO
- BETWEEN SERIES ADAPTER.  
"150" SERIES BULKHEAD JACK TO COMPLETE BNC/TNC SERIES
- FINISH: TFS-1A (NICKEL)
- ALL DIM ARE IN INCHES

QTY	DESCRIPTION	PART NUMBER	ITEM
TOL UNLESS SPECIFIED			
.XX ±			
.XXX ±			
.XXXX ±			
ANGLES			
DWN RAG 12/15/86	MATERIAL	CODE IDENT	DRAWING NO.
CHK F3 1-15-87		14949	22-14
ENGR 2/11 1-17-87			
NEXT ASSY APPR 1-19-87	SCALE 2/1	DATE 1-19-87	SHEET 1 OF 2