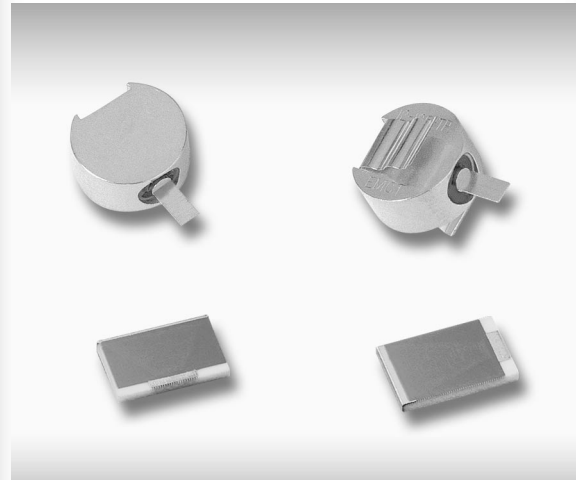


Features

- Nominal Impedance 50 or 100 Ohms
- Power Rating 5 to 250 Watts
- Frequency Range from DC to 26.5 GHz
- Substrates in BeO, AlN or Alumina
- Three Package Styles Available - Surface Mount, Chip, and Pill
- S-parameter Data Available
- Non-50 Ohm Resistance Values Available
- Conforms to Many Military Standards

Applications

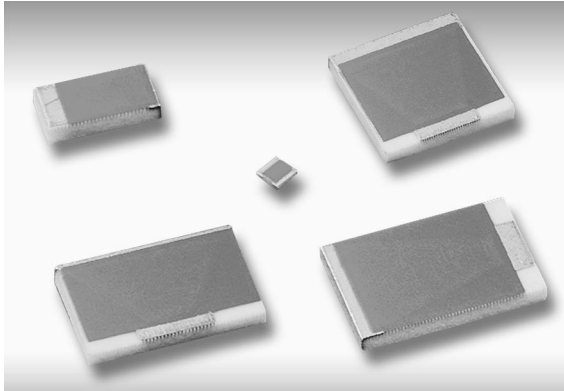
- Broadcast (TV and Radio)
- High Power Amplifiers
- High Power Filters
- Instrumentation
- Isolators
- Military
- Remote Termination
- Satellite Communication
- Splitters/Combiners
- Directional Couplers



EMC Technology is the world's premier manufacturer of surface mount, chip, and pill terminations. EMC invented the original pill termination (patent 3,354,412) and holds the patent for the asymmetrical surface mount termination (patent 5,739,743), allowing for improved power handling capabilities. EMC also offers small 0402 and 0505 size full ground plane terminations with alumina, AlN and BeO type substrates.

Table of Contents

Surface Mount	36
Chips – Standard	38
Chips – High Frequency	40
Chips – High Reliability	42
Pill Termination	44



EMC Technology offers the SC series terminations with alumina substrates for low power applications. These chip terminations have a full wrap-around ground plane for improved power handling capability.

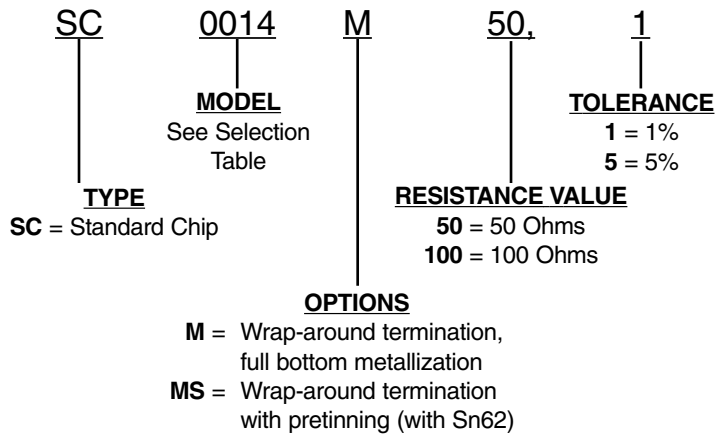
General Specifications

Resistance Values 50 and 100 Ohms Standard
 Frequency Range DC to 18 GHz
 Power Rating0.5 to 3 Watts
 Power Derating100% @ 100° C
 Derates to 0% @ 125° C
 Operating Temperature -55° C to 150° C

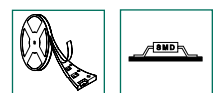
Material Specifications

Substrate Alumina
 Resistive Material Thick Film
 Termination Material Thick Film

Ordering Information



Other ohms values available upon request. Please contact factory.



Selection Table

Power (W)@		Tolerance	Available Options	Dimensions In. (mm)			Part Number*
125°C Ambient	100°C on Heat Sink			L	W	T ₁	
0.05	0.5	± 5%	M	0.075 (1.90)	0.025 (0.64)	0.021 (0.53)	SC1016M*
0.10	1	± 1%	M	0.100 (2.54)	0.050 (1.27)	0.021 (0.53)	SC0017M*
0.10	1	± 1%	M	0.150 (3.81)	0.075 (1.90)	0.013 (0.33)	SC0014M*
0.25	3	± 5%	M	0.250 (6.35)	0.100 (2.59)	0.122 (3.10)	SC0028M*

* To complete the part number, see ordering information on page 40.

