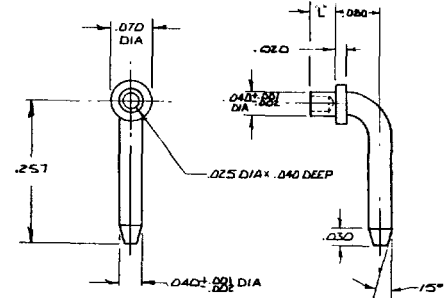


Please refer to Figure 7625

PART NO.	A	Board Thick
7725A	.051	.032
7725B	.082	.062
7725C	.113	.094

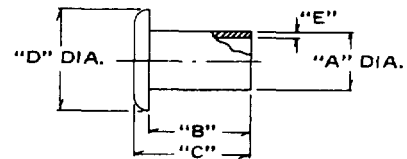
Fig. 7725



Please refer to Figure 7600

PART NO.	A	B	C	D	E
7600A	.030	.062	.072	.060	.005
7600B	.030	.094	.103	.060	.005
7601A	.047	.062	.071	.070	.006
7601B	.047	.094	.103	.070	.006
7601C	.047	.125	.134	.070	.006
7601D	.047	.156	.165	.070	.006
7602A	.058	.062	.078	.105	.007
7602B	.058	.094	.109	.105	.007
7603B	.075	.094	.110	.125	.008
7604B	.090	.094	.113	.150	.009
7604C	.090	.125	.145	.150	.009
7604D	.090	.156	.176	.150	.009

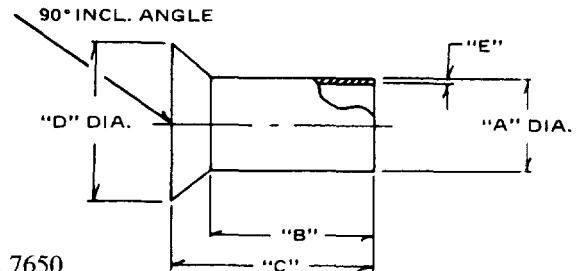
Fig. 7600



Please refer to Figure 7650

PART NO.	A	B	C	D	E
7650A	.030	.051	.071	.059	.006
7650B	.030	.082	.102	.059	.006
7651A	.047	.054	.077	.080	.006
7651B	.047	.085	.108	.080	.006
7651C	.047	.117	.140	.080	.006
7651D	.047	.148	.171	.080	.006
7652A	.058	.068	.105	.110	.007
7652B	.058	.099	.136	.110	.007
7653B	.075	.095	.128	.125	.008
7653C	.075	.127	.160	.125	.008

Fig. 7650



Standard Plating Suffix to Part Number      Terminal  
See Page 93 for all plating options.      -7 (Au over Cu)

TOLERANCE: .xxx ±.005, .xxx ±.01 (ALL DIMS. BEFORE PLATING)