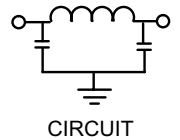
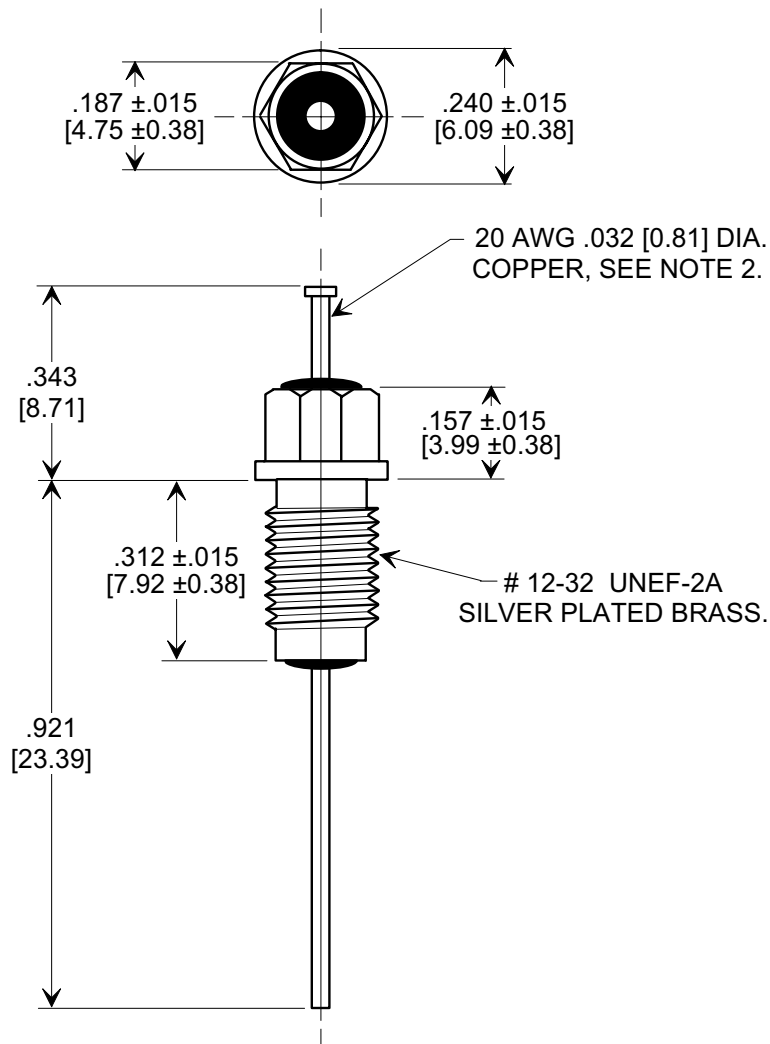
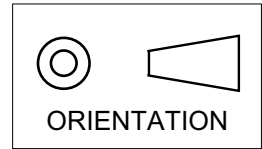


Electrical Testing  
per Tusonix standard  
test plans and Mil-Std-202  
Test Methods.

**MARKETING SALES DRAWING**  
**DIMENSIONS IN INCHES - DO NOT SCALE THIS DRAWING**  
**DIMENSIONS IN METRIC - [ ]**



**NOTES:**

- TUSONIX STANDARD PART NUMBER: 4203-051.  
TUSONIX RoHS COMPLIANT PART NUMBER: 4203-051 LF.  
CUSTOMER MUST SPECIFY STANDARD OR RoHS PART NUMBER WHEN ORDERING.
- LEAD FINISH: STANDARD PART #: 60/40 SOLDER PLATED COPPER. RoHS PART #: SILVER PLATED COPPER.
- PART MARKING: TRADEMARK AND VARIATION NUMBER ON HEX FLATS.  
STANDARD PART: BLACK INK. RoHS PART: GREEN INK.
- SUPPLIED WITH SILVER PLATED COPPER ALLOY HEX NUT AND INTERNAL TOOTH LOCK WASHER.

MIN. CAP. (pF)	WORKING VOLTAGE (WVdc)		CURRENT IDC	I.R. MIN. @ 100 (VDC.)	DWV (VDC)	MINIMUM NO LOAD INSERTION LOSS (dB) AT 25°C PER MIL-STD -220			
	85°C	125 °C				10 MHz	100 MHz	1 GHz	10 GHz
5000	200	100	10 A	10 G Ω	400	20	65	70	70

REVISION RECORD	Original Release C.O. <b>1653</b>	CURRENT UNIT "A" ADDED. L.E. 08-20-85 <b>2595</b> RDN TO COMP FMT & ADDED METRIC. S.M. 02-12-02 <b>200020522-6-05</b> ADDED IR & DWV. ADDED AND REVISED NOTES. DIM .240 WAS .235. S.M. 11-15-05 <b>20051027-3-03</b>	TOLERANCES unless otherwise specified 2 PLC. DECIMAL ± $\frac{\quad}{\quad}$ 3 PLC. DECIMAL ± .031 [0.79]		Title <b>BUSHING STYLE EMI FILTER</b>	
	ANGLES ± $\frac{\quad}{\quad}$		Drawn S.M. 05-22-02	Scale X 3		
	<b>TUSONIX</b> TUCSON, ARIZONA		Approved J.Mc. 05-22-02			
	<b>A</b>		<b>4203-051</b>			

X-2015 Rev-0