

| PRODUCT NO.    | COVER | BUTTON COLOR | MOUNT STYLE | STAND OFF | APPLICABLE HDR P/N | PACKAGING SPEC. | PRODUCT SPEC. | REVISIONS |             |          |     |         |
|----------------|-------|--------------|-------------|-----------|--------------------|-----------------|---------------|-----------|-------------|----------|-----|---------|
|                |       |              |             |           |                    |                 |               | REV       | DESCRIPTION | ECN      | BY  | DATE    |
| 10012993-22RMC | WITH  | BLACK        | ABOVE       | 2.2 mm    | 62598-22A          | GS-14-655       | 110-415       | 1         | SKETCHED    |          | M.H | 8/23/02 |
| 10012993-22ROC |       |              |             |           |                    |                 |               | A         | RELEASED    | J20485   | M.H | 9/2/02  |
|                |       |              |             |           |                    |                 |               | B         | REVISED     | J04-0148 | M.H | 4/23/04 |


9. オプション(カバー)装着品
8. ピンヘッダへの組込はb部を水平になるように押さえ、本品と確実に合せてから、c部をピンヘッダ上面まで押し込む。  
そして、取付穴へD部が嵌まるように手で押さえたままネジ締めを行う。
7. 本品はタイプ1, 2カード、及びクリックカードに対応しています。
6. 基板実装時の寸法を表す。
5. 基板への取付はM2 x P0.4ネジ及び座金を各4個使用する。
4. 取付ネジ長さは使用する基板厚と\*寸法を確認の上選定のこと。
3. 最大ネジ締め締付トルク: 0.245N・m (2.5kgf・cm)。
2. 本品はピンヘッダと合わせて使用する。
1. ボタンの色調は黒色。

9. OPTION(COVER) IS ATTACHED.
8. AS MOUNTING METHOD TO PIN-HEADER, IT SHALL BE PUT MARKED PORTION b HORIZONTALLY AND BE FITTED ON COMPLETELY, THEN IT SHALL BE PUSHED MARKED PORTION c BY TOP SURFACE OF THE PIN-HEADER, AND, IT'S SUPPRESSED BY THE HAND TO FITTING IN MARKED PORTION D TO THE MOUNTING HOLE, AND SCREWING.
7. PC CARD TYPE 1, 2 AND 'CLICK CARD' ARE APPLICABLE.
6. SHOW P.C. BOARD MOUNTING DIMENSIONS.
5. 4-M2xP0.4 SCREW WITH WASHER ARE REQUIRED FOR FASTENING CONNECTOR TO P.C. BOARD.
4. DETERMINE MOUNTING SCREW LENGTH UPON CHECKING P.C. BOARD THICKNESS AND '\* ' DIMENSION. ('\*' SHOWS REQUIRED SCREW LENGTH FROM MOUNTING SURFACE.)
3. MAXIMUM TIGHTENING TORQUE: 0.245N・m (2.5kgf・cm).
2. THIS PRODUCT USED WITH PIN-HEADER.
1. BUTTON COLOR IS BLACK.

注記

NOTE

|    |                |     |                 |                               |         |
|----|----------------|-----|-----------------|-------------------------------|---------|
| ⑥  | COVER          | 1   | STAINLESS STEEL |                               |         |
| ⑤  | SPECIAL SPACER | 2   | ZINC ALLOY      |                               |         |
| ④  | SPACER         | 2   | STAINLESS STEEL |                               |         |
| ③  | SHROUD         | 1   | COPPER ALLOY    | CONTACT AREA GOLD OVER NICKEL |         |
| ②  | BUTTON         | 1   | PBT             |                               | UL 94HB |
| ①  | CASE           | 2   | STAINLESS STEEL |                               |         |
| NO | DESCRIPTION    | QTY | MATERIAL        | FINISH                        | REMARKS |

|   |  |        |   |             |   |         |  |                  |  |   |  |
|---|--|--------|---|-------------|---|---------|--|------------------|--|---|--|
| <br><b>FCI</b> |  |        |   |             |   |         |  |                  |  |   |  |
| SHEET INDEX   |  | ISSUE  | B | B           | A |         |  |                  |  |   |  |
|   |  | SH NO. | 1 | 2           | 3 |         |  |                  |  |   |  |
| TOLERANCES UNLESS OTHERWISE SPECIFIED   |  | MAT    |   | DR          |   | DATE    |  | CUSTOMER         |  | TITLE   |  |
|   |  | —      |   | M. Hasegawa |   | 4/23/04 |  | COPY             |  | S/D SMTIL CARDBUS EJECT MECH.<br>2 STEP ABOVE MOUNT |  |
| LINEAR  |  | FINISH |   | ENGR        |   | 4/23/04 |  | THIRD ANGLE PROJ |  | PRODUCT FAMILY                                      |  |
|   |  | —      |   | M. Hasegawa |   |         |  | UNIT             |  | SATF Header CB SMT IL                               |  |
| ANGLES  |  |        |   | CHK         |   | 4/26/04 |  | SCALE            |  | SIZE  |  |
|   |  |        |   | APPLY       |   | 4/26/04 |  | 2/1              |  | B   |  |
|   |  |        |   |             |   |         |  | DWG. NO.         |  | REV   |  |
|   |  |        |   |             |   |         |  | 10012993         |  | B   |  |
|   |  |        |   |             |   |         |  | SHEET            |  | 1 of 3  |  |

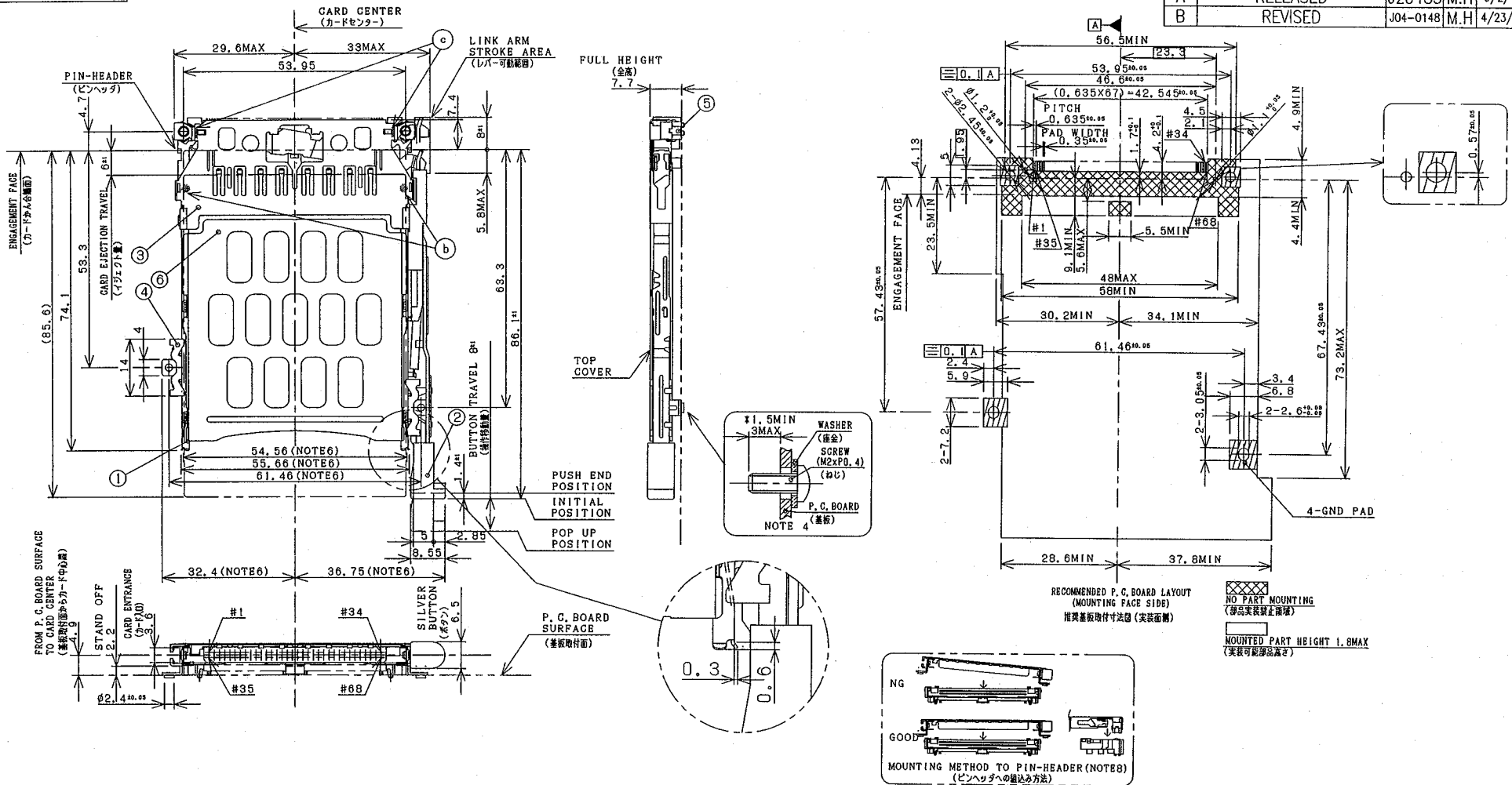
DO NOT SCALE PRINT THIS INFORMATION IS CONFIDENTIAL AND IS DISCLOSED TO YOU ON CONDITION THAT NO FURTHER DISCLOSURE IS MADE BY YOU TO OTHER THAN FCI PERSONNEL WITHOUT WRITTEN AUTHORIZATION FROM FCI JAPAN K.K.

PRODUCT NO.

10012993-22RMC

REVISIONS

| REV | DESCRIPTION | ECN      | BY  | DATE     |
|-----|-------------|----------|-----|----------|
| 1   | SKETCHED    |          | M.H | 8/23/'02 |
| A   | RELEASED    | J20485   | M.H | 9/2/'02  |
| B   | REVISED     | J04-0148 | M.H | 4/23/'04 |



| 許容差の指定なき寸法公差 |      |
|--------------|------|
| 10 以下        | ±0.3 |
| 10をこえ100未満   | ±0.5 |
| 100 以上       | ±0.8 |
| 角 度          | ±3°  |

DO NOT SCALE PRINT  
FD-004A REV F

THIS INFORMATION IS CONFIDENTIAL AND IS DISCLOSED TO YOU ON CONDITION THAT NO FURTHER DISCLOSURE IS MADE BY YOU TO OTHER THAN FCI PERSONNEL WITHOUT WRITTEN AUTHORIZATION FROM FCI JAPAN K.K.

| SHEET INDEX | ISSUE  |  | MAT    | DR               | DATE    | CUSTOMER COPY    | TITLE  |         |
|-------------|--------|--|--------|------------------|---------|------------------|--|---------|
|             | SH NO. |  |        |                  |         |                  | S/D SMIL CARDBUS EJECT MECH.<br>2 STEP ABOVE MOUNT |         |
|             |        |  |        | M. Hasegawa      | 4/23/04 |                  | PRODUCT FAMILY                                     | CODE JP |
| LINEAR      |        |  | FINISH | M. Hasegawa      | 4/23/04 |                  | SATF Header CB SMIL IL                             |         |
| ANGLES      |        |  |        | CHK Yamada       | 4/26/04 | THIRD ANGLE PROJ | SCALE  | SIZE    |
|             |        |  |        | APPD M. Hasegawa | 4/26/04 |                  | 2/1  | B       |
|             |        |  |        |                  |         |                  | DWG. NO.   | REV     |
|             |        |  |        |                  |         |                  | 10012993   | B       |
|             |        |  |        |                  |         |                  |  | SHEET   |
|             |        |  |        |                  |         |                  |  | 2 of    |

**FCI**

S/D SMIL CARDBUS EJECT MECH.  
2 STEP ABOVE MOUNT

PRODUCT FAMILY SATF Header CB SMIL IL CODE JP

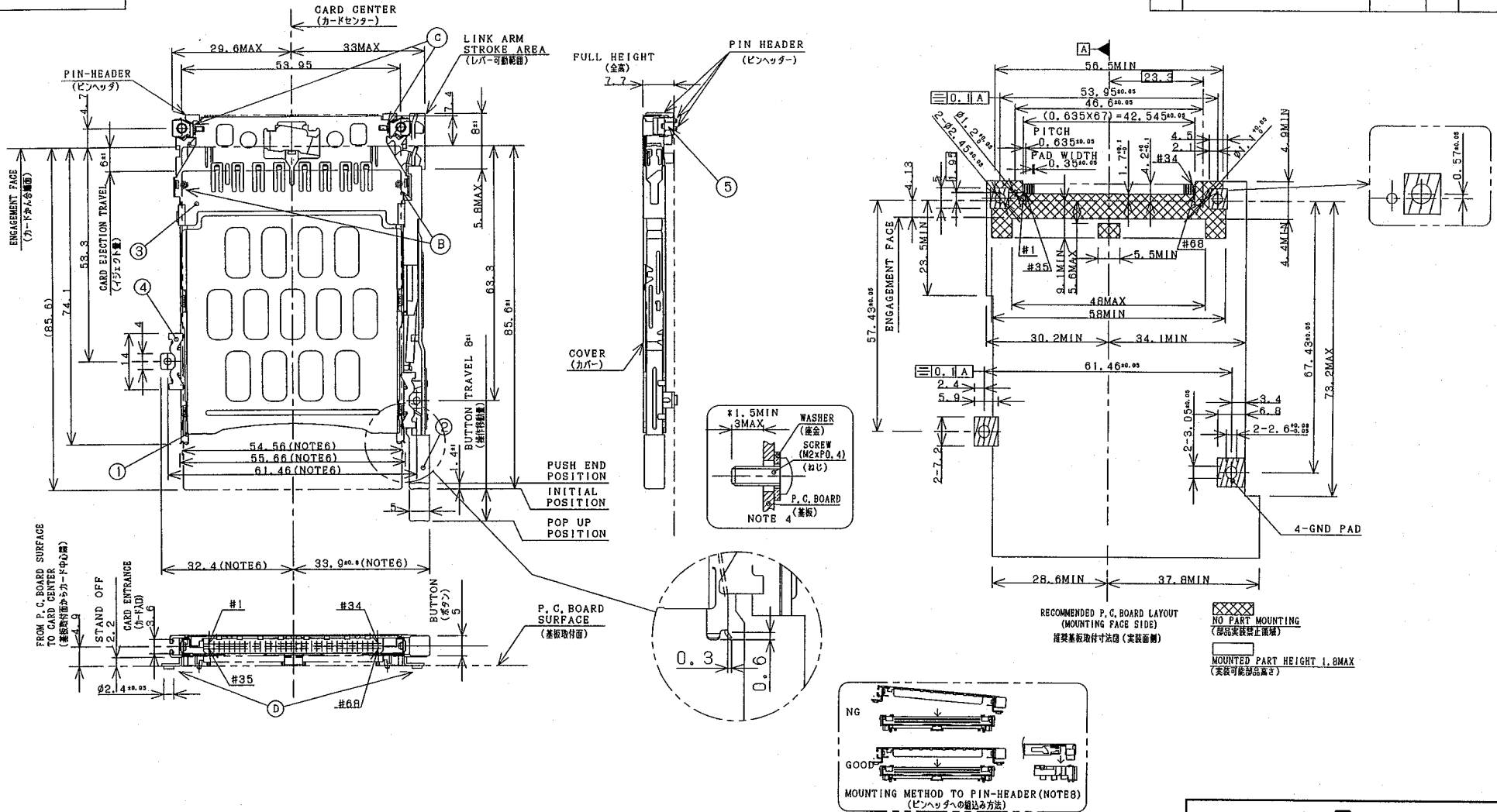
SCALE 2/1 SIZE B DWG. NO. 10012993 REV B SHEET 2 of

PRODUCT NO.

1001293-22ROC

REVISIONS

| REV | DESCRIPTION | ECN      | BY  | DATE    |
|-----|-------------|----------|-----|---------|
| A   | RELEASED    | J04-0148 | M.H | 4/23/04 |



| 許容差の指定なき寸法公差  |      |
|---------------|------|
| 10 以下         | ±0.3 |
| 10 をこえ 100 未満 | ±0.5 |
| 100 以上        | ±0.8 |
| 角 度           | ±3°  |

| SHEET INDEX | ISSUE  |  | MAT | DR          | DATE    | CUSTOMER COPY    | TITLE   |
|-------------|--------|--|-----|-------------|---------|------------------|---|
|             | SH NO. |  |     |             |         |                  |   |
|             |        |  |     | M. Hasegawa | 4/23/04 |                  | S/D SMTIL CARDBUS EJECT MECH.<br>2 STEP ABOVE MOUNT |
| LINEAR      |        |  |     | M. Hasegawa | 4/23/04 |                  | PRODUCT FAMILY<br>SATF Header CB SMT IL             |
| ANGLES      |        |  |     | Y. Yamada   | 4/26/04 | THIRD ANGLE PROJ | SCALE 2/1   |
|             |        |  |     |             | 4/26/04 | UNIT MM          | SIZE B  |
|             |        |  |     |             |         |                  | DWG. NO. 1001293                                    |
|             |        |  |     |             |         |                  | REV A   |
|             |        |  |     |             |         |                  | SHEET 3 of 3  |

DO NOT SCALE PRINT

THIS INFORMATION IS CONFIDENTIAL AND IS DISCLOSED TO YOU ON CONDITION THAT NO FURTHER DISCLOSURE IS MADE BY YOU TO OTHER THAN FCI PERSONNEL WITHOUT WRITTEN AUTHORIZATION FROM FCI JAPAN K.K.

DF-004A REV F

