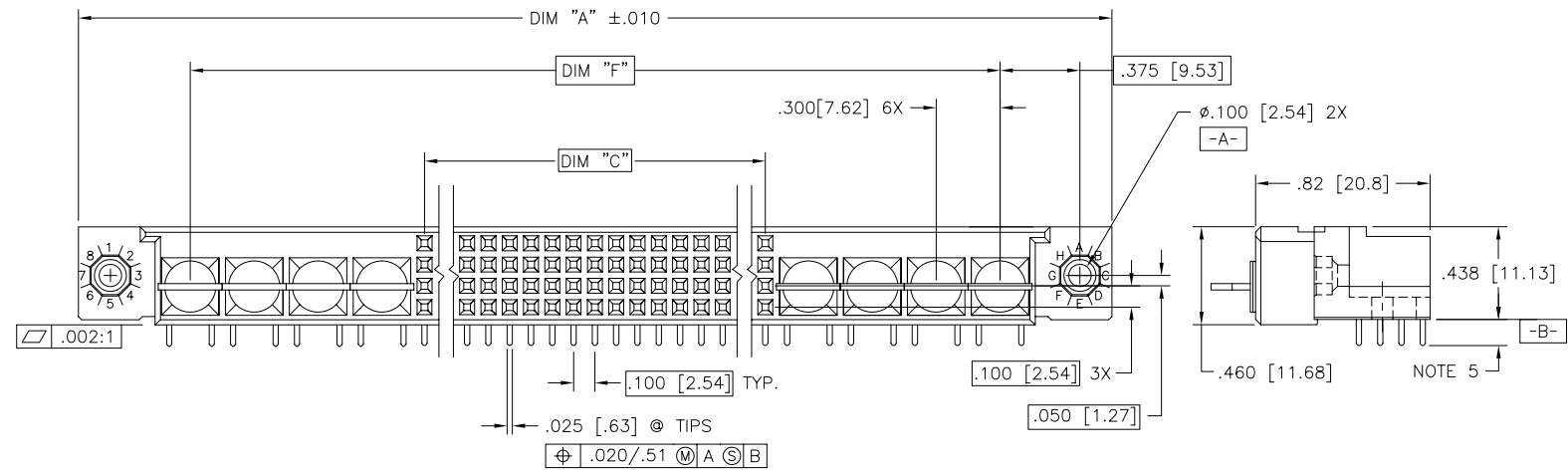
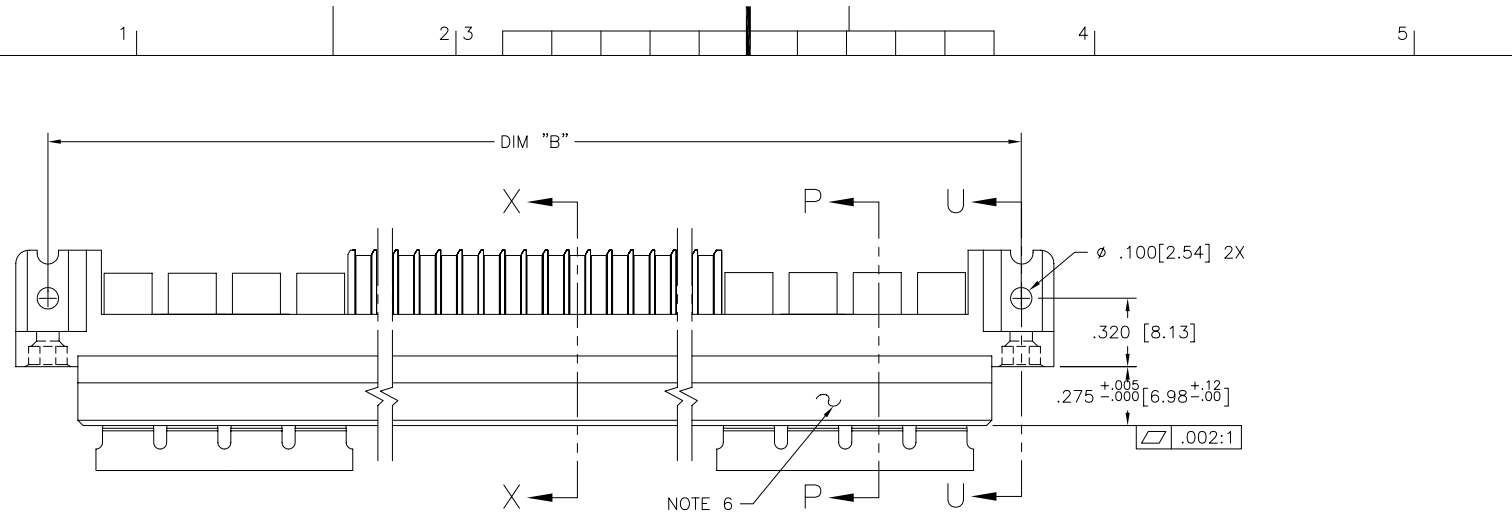




FCIconnect.com

Copyright FCI

PRODUCT NUMBER  
SEE NOTE 1



mat'l. code NOTE 3		surface ISO 1302 <input checked="" type="checkbox"/>	tolerance ISO 406 ISO 1101	projection 	product family HPC
ltr	ecn no	dr	date	tolerances unless otherwise specified	title
A	V23463	JM	10/19/92	angles linear .xx $\pm$ .01/.3	4 ROW R/A RECEPTACLE SOLDER TAIL, 0 G.P., 8 P.P
B	V40243	PDP	1/13/94	.xxx $\pm$ .005/.13	
C	V91214	HTB	5/18/99	0'±2' .xxxx $\pm$ .0020/.051	scale 1:1
D	V00255	LSS	1/13/00	dr D.SHEAFFER 10/6/92	dwg no
E	M06-0255	MHT	7/06/06	enr S.CLARK 10/6/92	sheet 1 of 2 size
				chr S.CLARK 10/6/92	50566
				appd S.CLARK 10/6/92	A3
sheet index	revision sheet	E 1	E 2		type Product Customer Drawing

form: A3

PRODUCT NUMBER	DIM.	LENGTH FORMULAS
SEE NOTE 1	DIM A	.100/2.54 X NO. OF COLUMNS + 3.15/80
	DIM B	.100/2.54 X NO. OF COLUMNS + 2.850/72.39
	DIM C	.100/2.54 X NO. OF COLUMNS - .100/2.54
	DIM F	.100/2.54 X NO. OF COLUMNS + 2.100/53.34

NOTES:

① PRODUCT NUMBERING CODE:  
 50566 - X YYY Z  
 TAIL LENGTH (NOTE 5)  
 NO. OF POSITIONS (NOTE 2)  
 PLATING (NOTE 4)  
 BASE NUMBER

PRODUCT NUMBERING CODE FOR  
 SELECT LOAD PART NUMBERS:  
 50566 - XYYYY  
 SEQUENCE NUMBER  
 ALWAYS 'XX'  
 BASE NUMBER

② THIS PRODUCT IS CONFIGURED IN SIZES OF  
 6 THRU 80 COLUMNS IN INCREMENTS OF ONE.  
 i.e.: 6,7,8,9.....79,80.

③ HOUSING MATERIAL: GLASS AND MINERAL FILLED  
 HIGH-TEMP THERMOPLASTIC, FLAME RETARDANT  
 PER UL94V-0 COLOR: BLACK  
 CONTACT MATERIAL: BeCu

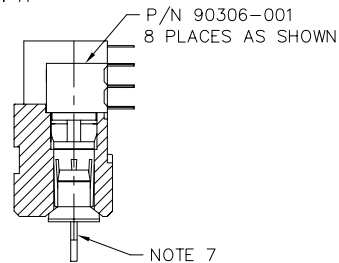
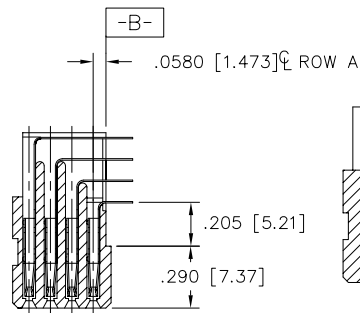
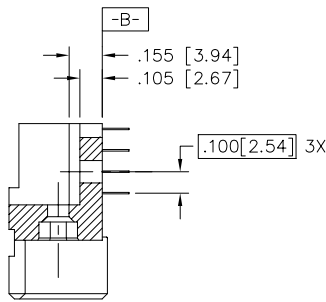
④ PLATING CONTACT AREA OPTIONS:  
 1 = 30u"/.76u GOLD  
 3 = 50u"/1.27u GOLD  
 5 = 30u"/.76u GXT  
 ALL SOLDER TAILS SnPb  
 POWER CONTACTS 30u" / .76u GOLD

⑤ TAIL LENGTH OPTIONS:  
 E = .125±.010 / 3.18±.25  
 F = .145±.010 / 3.68±.25  
 H = .180±.010 / 4.57±.25  
 ALL POWER TAILS = .145 / 3.68

⑥ MANUFACTURE'S NAME, PART NUMBER AND LOT CODE  
 TO APPEAR ON THIS SURFACE PER BUS-12-108.

⑦ POWER SOCKET LOCATOR(P/N 50233) TO BE  
 REMOVED AFTER SOLDERING OPERATION.

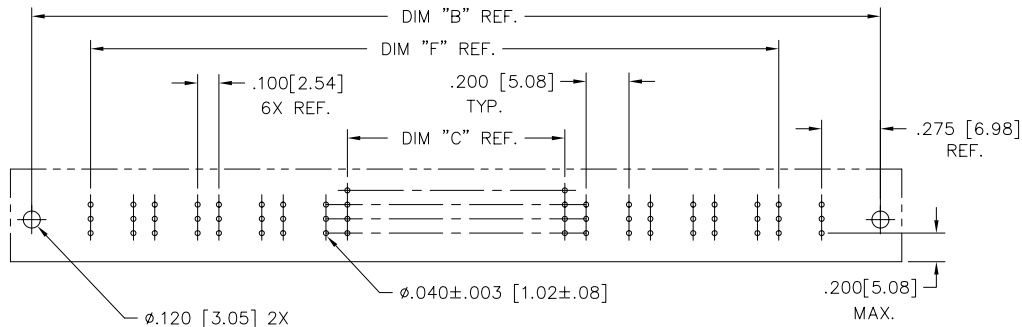
8. FOR DOCUMENTATION MENU, SEE  
 SPECIFICATION BUS-01-057.



SECTION U-U

SECTION X-X

SECTION P-P



RECOMMENDED PCB LAYOUT  
 (ALL HOLES LOCATED ON .100 [2.54] GRID  
 UNLESS OTHERWISE SPECIFIED)

mat'l. code		surface ISO 1302 ✓	tolerance ISO 406 ISO 1101	projection ⊕	product family HPC
ltr	ecn	no	dr	date	tolerances unless otherwise specified
E					angles linear .xx±.01/.3
					0°±2' .xxx±.005/.13
					.xxx±.0020/.05
		dr	D.SHEAFFER	10/6/92	INCH/MM
		enr	S.CLARK	10/6/92	scale 1:1
		chr	S.CLARK	10/6/92	FCJ
		appd	S.CLARK	10/6/92	dwg no 50566
sheet	revision				sheet 2 of 2 size A3
index	sheet				type Product Customer Drawing



Copyright FCI