

ZONE	REV	SCR NUMBER	DESCRIPTION	BY	DATE	APPROVED
ALL	-	DSMH-726HWR.VER01	NEW RELEASE	HCL-SD	04/12/2007	D.SMITH
	A	MCHU-76HMLS.VER02	KEEP OUT ZONES ADDED	HCL-AP	10/09/2007	D.SMITH
	B	CSAS-83KKVW.VER01	ADDED NEW PART NUMBERS FOR NEW PLATING CODES IN ASSEMBLY PART NUMBER ASSIGNMENT TREE. MODIFIED NOTE 4 AND 7. REMOVED REVISION COLUMN IN TABLE 1.	HCL-MH	03/12/2010	C.SAMMIS

RIGHT POLARIZING BACKPLANE MODULE
ASSEMBLY PART NUMBER ASSIGNMENT
335 - X 0 XX - X X X

LOAD
4 = STANDARD LOAD (1)
7 = CUSTOM LOAD, LEADED
8 = CUSTOM LOAD, LEAD FREE
L = CUSTOM LOAD, LEADED, ADVANCED PLATING
N = CUSTOM LOAD, LEAD FREE, ADVANCED PLATING

NUMBER OF COLUMNS
05 = 5 COLUMN MODULE
10 = 10 COLUMN MODULE
25 = 25 COLUMN MODULE

MINIMUM PIN WIPE LENGTH, SEE DETAIL U
3 = 1.00 mm WIPE
4 = 2.00 mm WIPE
5 = 3.00 mm WIPE

PLATING CODE (4)
0 = 735 4 = 804
1 = 732 5 = 803
2 = 769 6 = 806
3 = 768 7 = 805

POLARIZING PIN LOCATION CODE (SEE TABLE 2)

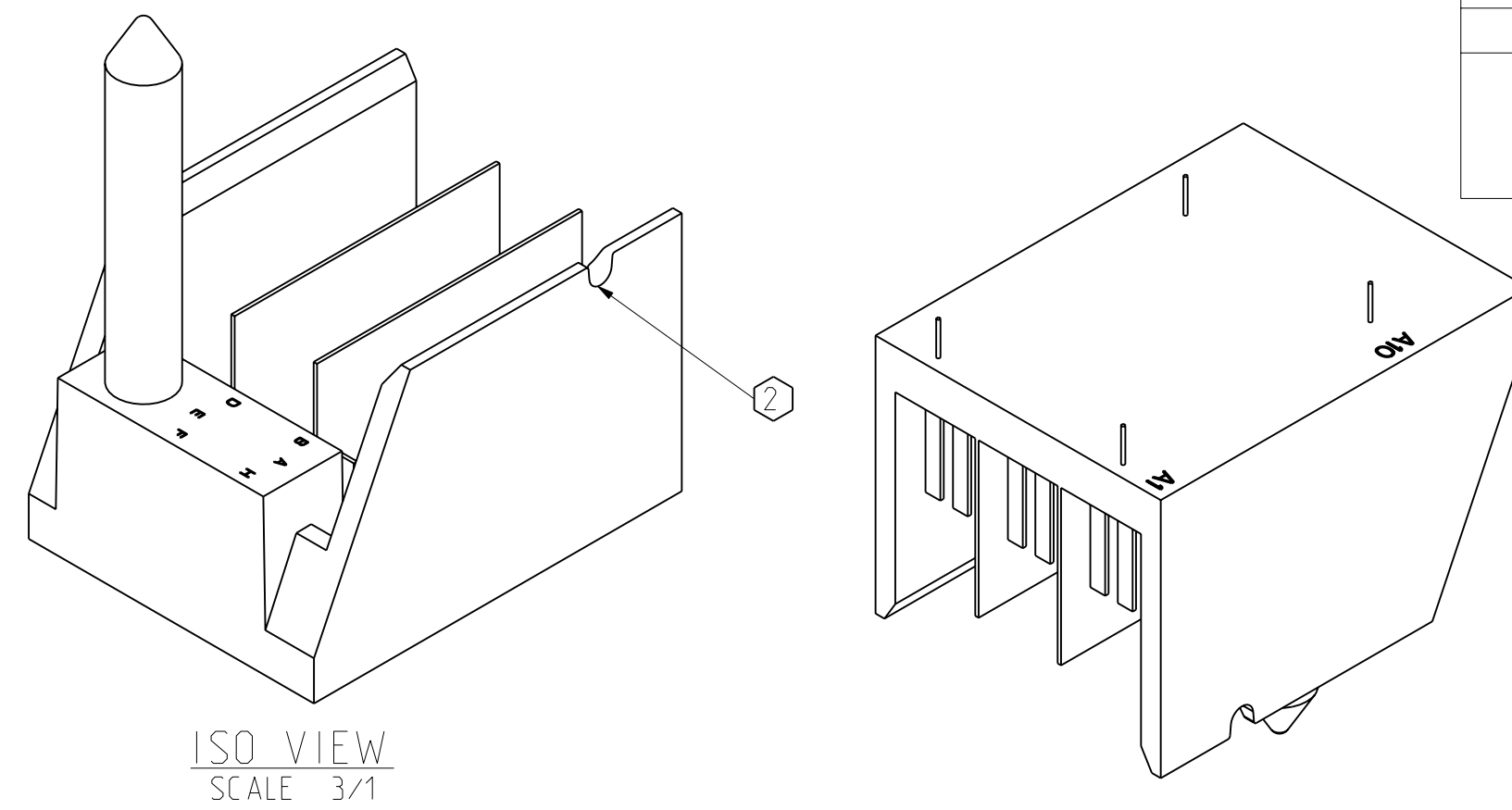
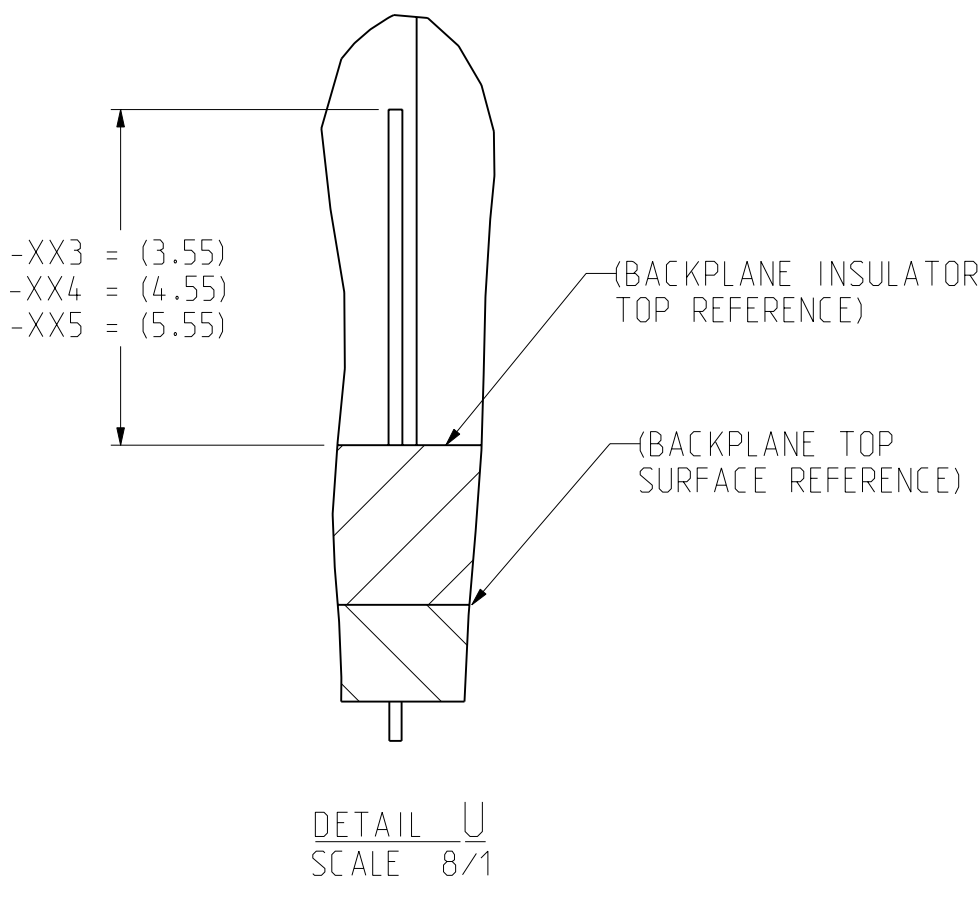
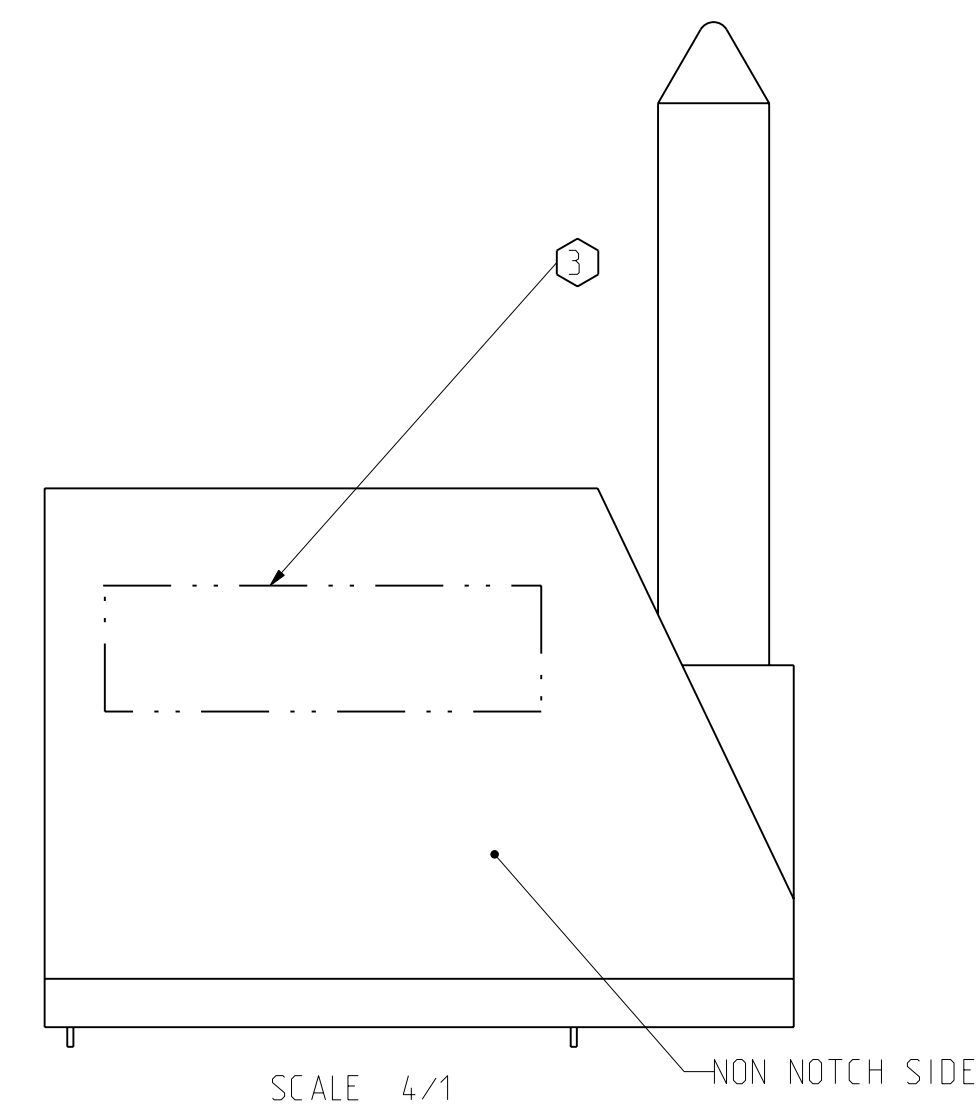
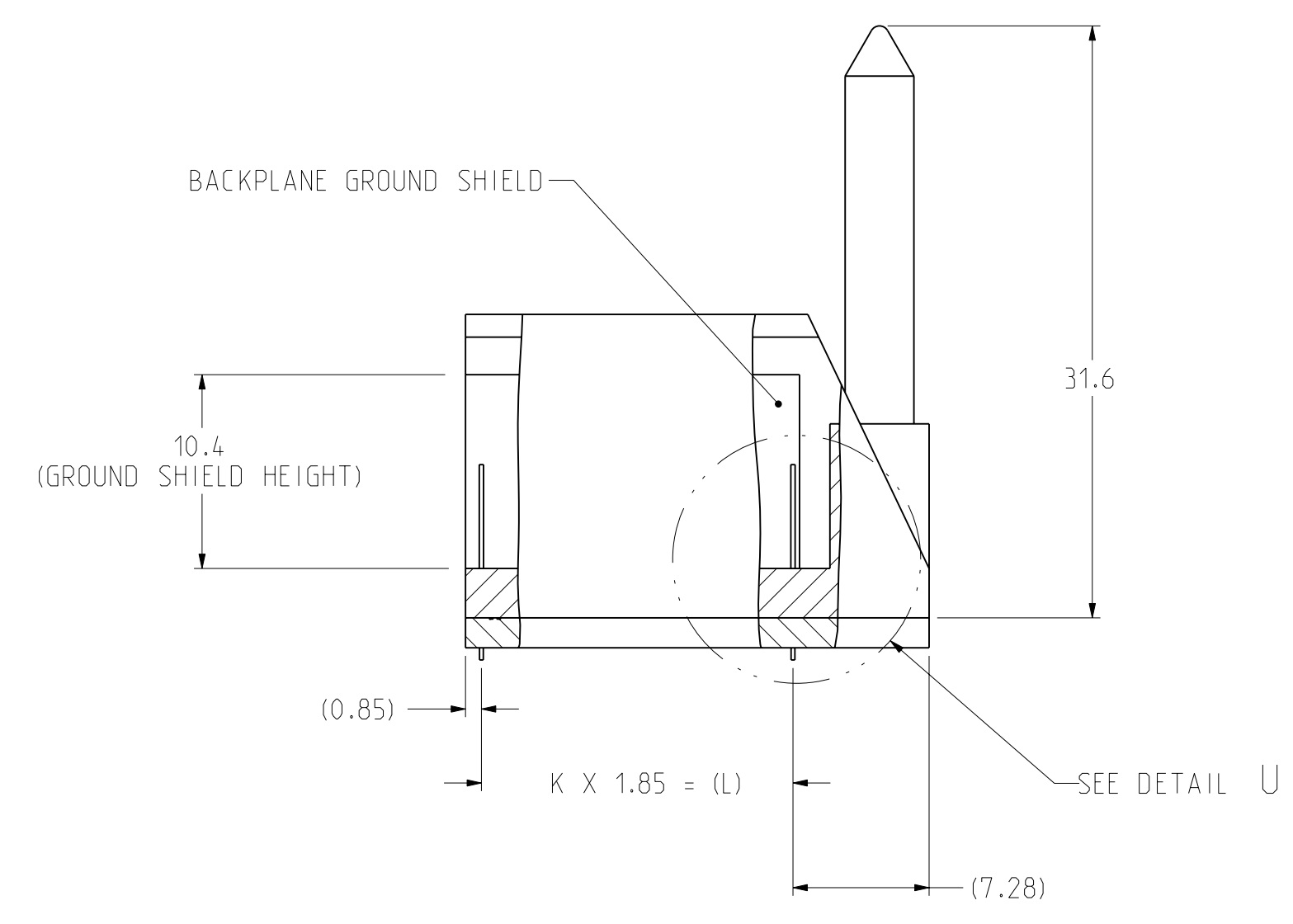
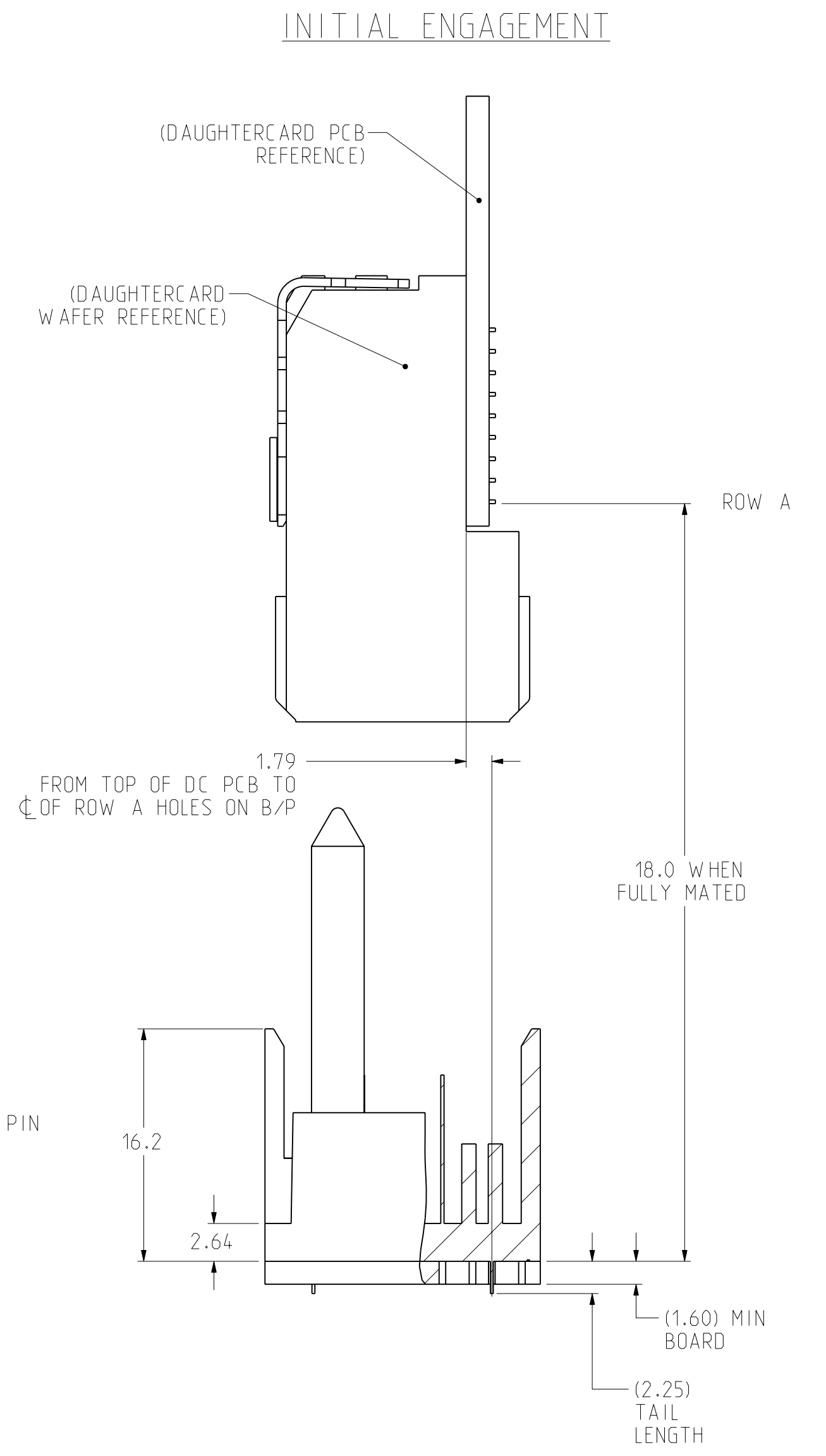
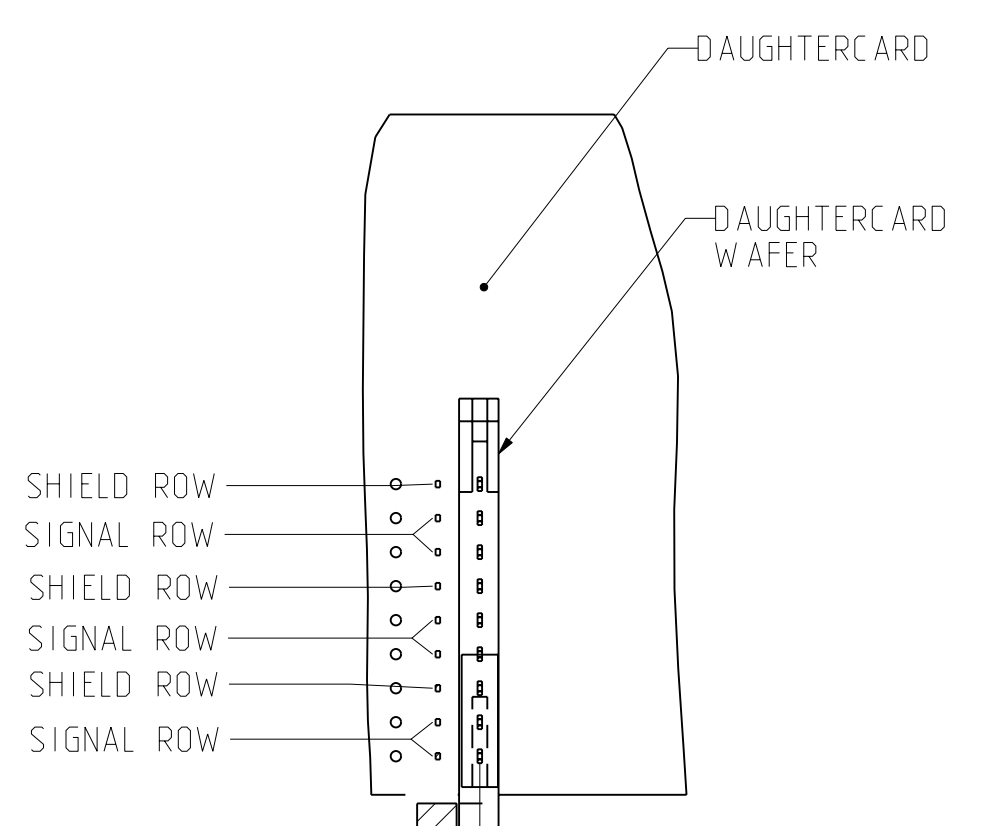
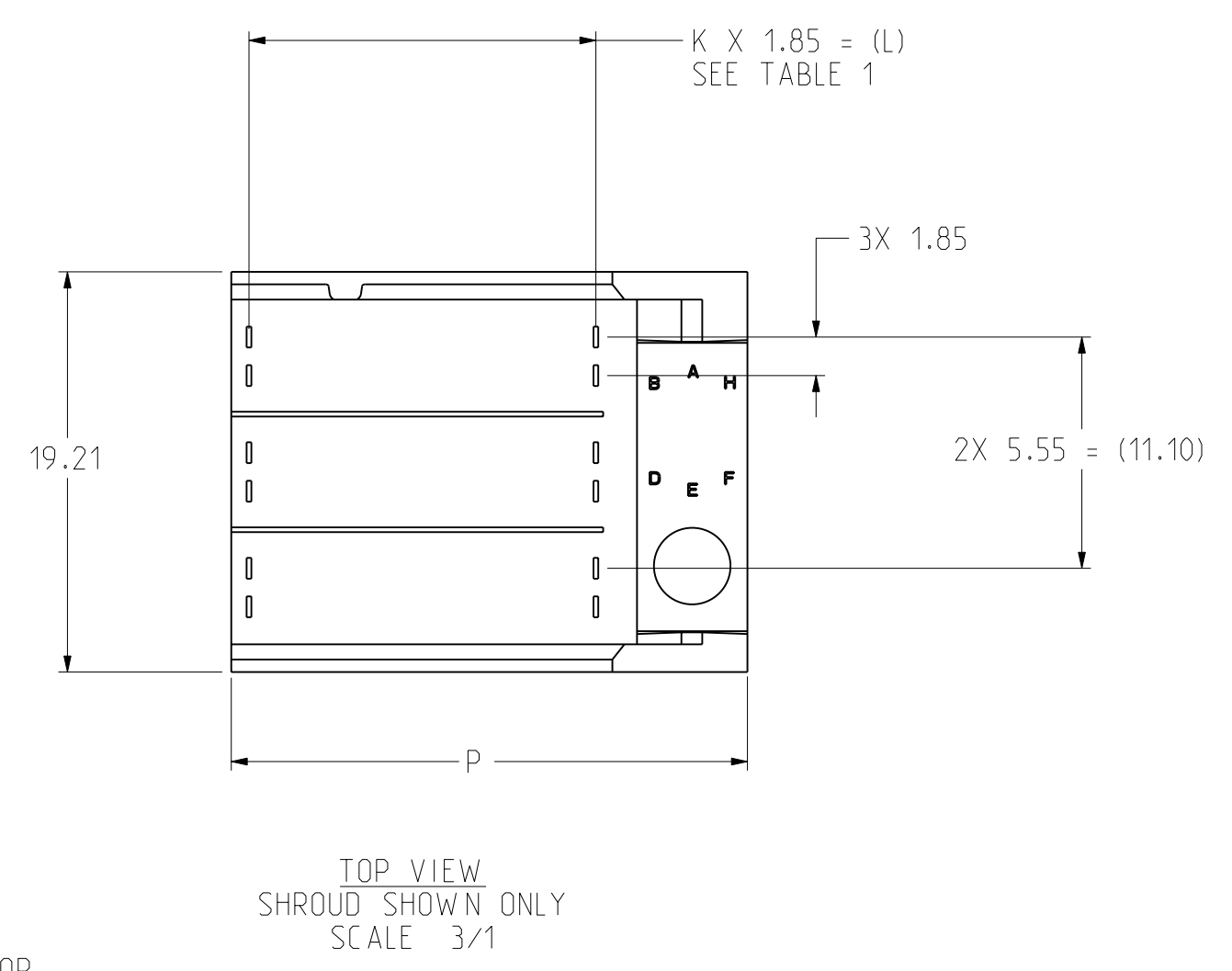


TABLE 1

ASSEMBLY PART NUMBER	K	(L)	P	TOTAL NUMBER OF DIFFERENTIAL PAIRS
335-X005-XXX	4	(7.4)	15.53	15
335-X010-XXX	9	(16.65)	24.78	30
335-X025-XXX	24	(44.40)	52.53	75

TABLE 2

PART NUMBER 335-X0XX-(XXX)	-0XX	-AXX	-BXX	-CXX	-DXX	-EXX	-FXX	-GXX	-HXX
POLARIZING PIN ORIENTATION									



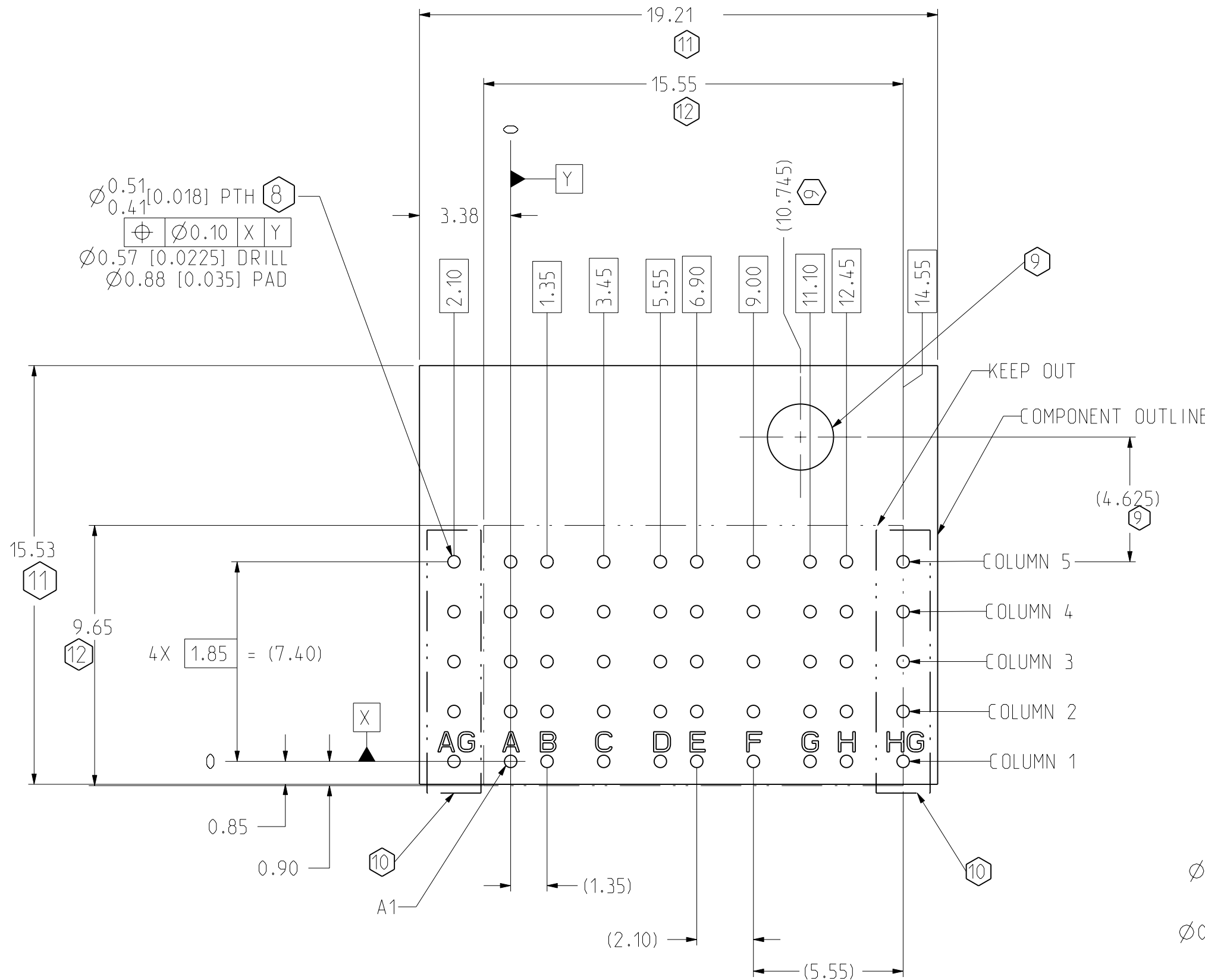
- NOTES:
- REFER TO TB-2085 FOR GbX PRODUCT SPECIFICATIONS.
 - NOTCH DESIGNATES "ROW A" SIDE OF SHROUD. NOTCH FEATURE ON OPPOSITE SIDE FROM PART MARKING.
 - PART MARKING AS FOLLOWS:
LINE 1: "ATCS" AND DATECODE (ATCS YYWW).
LINE 2: MODULE PART NUMBER (335-###-###).
LINE 3: WORK ORDER NUMBER (###*****), WHERE "*" DENOTES MANUFACTURING LOCATION.
 - 9TH DIGIT OF PART NUMBER IDENTIFIES PLATING:
735 - NI SULFAMATE, STANDARD GOLD, LEADED
732 - NI SULFAMATE, HIGH GOLD, LEADED
769 - NI SULFAMATE, STANDARD GOLD, LEAD-FREE
768 - NI SULFAMATE, HIGH GOLD, LEAD-FREE
804 - NANO NI, STANDARD GOLD, LEADED
803 - NANO NI, HIGH GOLD, LEADED
806 - NANO NI, STANDARD GOLD, LEAD-FREE
805 - NANO NI, HIGH GOLD, LEAD-FREE
 - FOR REPAIR PROCEDURE FOR SIGNAL BLADE, SEE TB-2099.
 - USE MATING GAUGE PART NUMBER XXX-XXXX-XXX AFTER INSERTION ONTO BOARD TO CHECK POSITION OF BLADES.
 - IF 4TH DIGIT OF THE PART NUMBER IS 7 OR 8 OR L OR N (CUSTOM PART), DIGIT 5 THROUGH 10 DO NOT FOLLOW THE PARADIGM IN TABLE.

TOLERANCES	DESIGN	03/16/2007	D.SMITH	Amphenol TCS A Division of Amphenol Corporation 200 Innovative Way, Nashua, NH 03062 603.879.3000	
0.0	±0.25	DRAWN	03/16/2007	HCL-AP	TITLE RIGHT POLARIZED BACKPLANE MODULE 3 PAIR GbXe
0.00	±0.13	CHK	03/16/2007	D.SMITH	PART NO. SEE PART NUMBER TREE
0.000	±	APVD	04/12/2007	D.SMITH	REV N/A
ANGLES	±				DRAWING NO. C-335-4005-500
UNLESS OTHERWISE SPECIFIED DIMENSIONS ARE IN MM. DECIMAL MARKER IS A PERIOD.				PRO/E TYPE: S1-P1031-CU-MS-BP-SHRD-RTPOL-05 PRO/E DRAWING: C-335-4005-500	
CUSTOMER USE DRAWING				SIZE D SCALE 1/1 SHEET 1 OF 2	

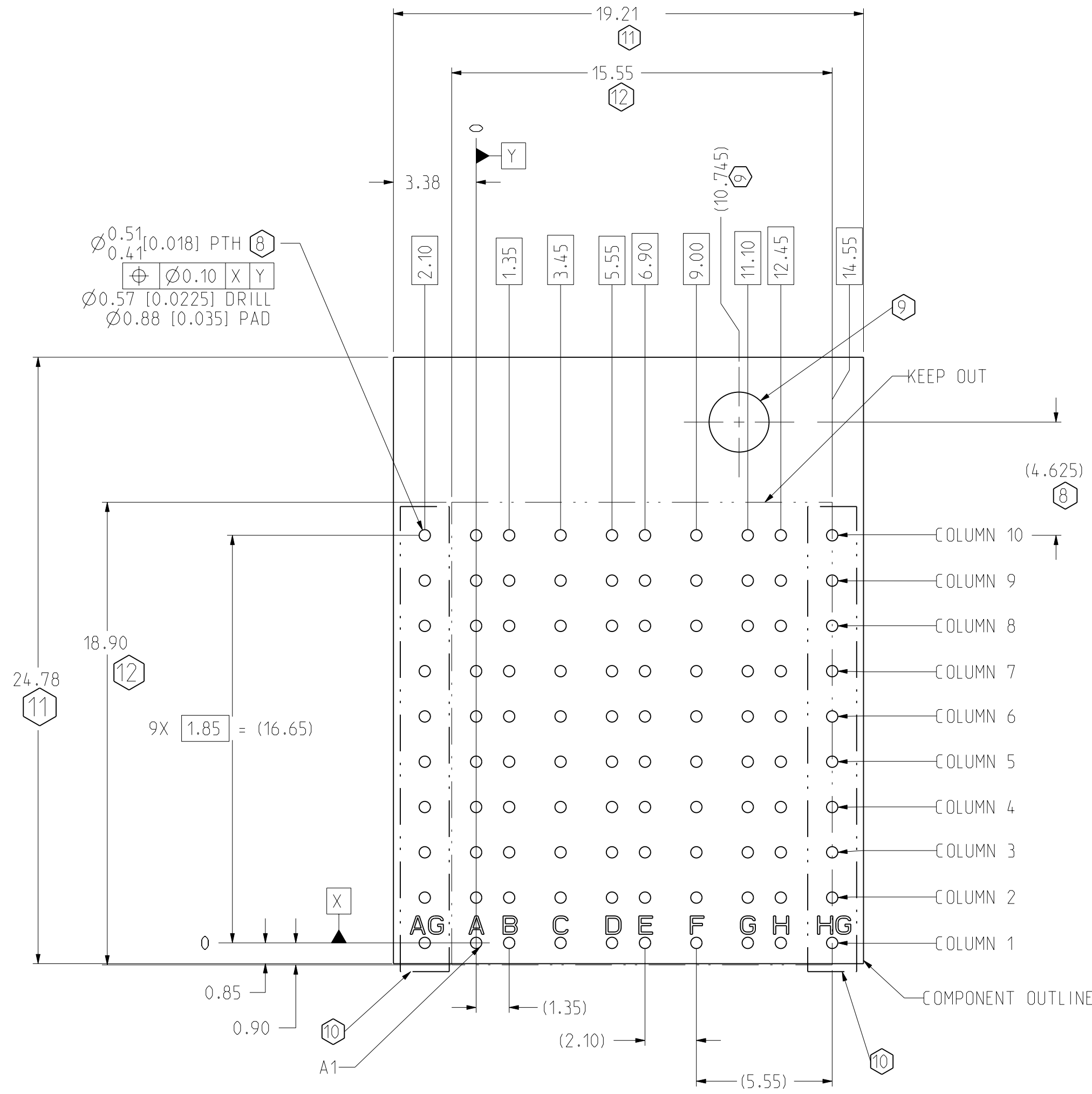
INTERPRET PER ASME Y14.5M
CODE IDENT 31413

DRW NO. C-335-4005-500 SH 1 REV B

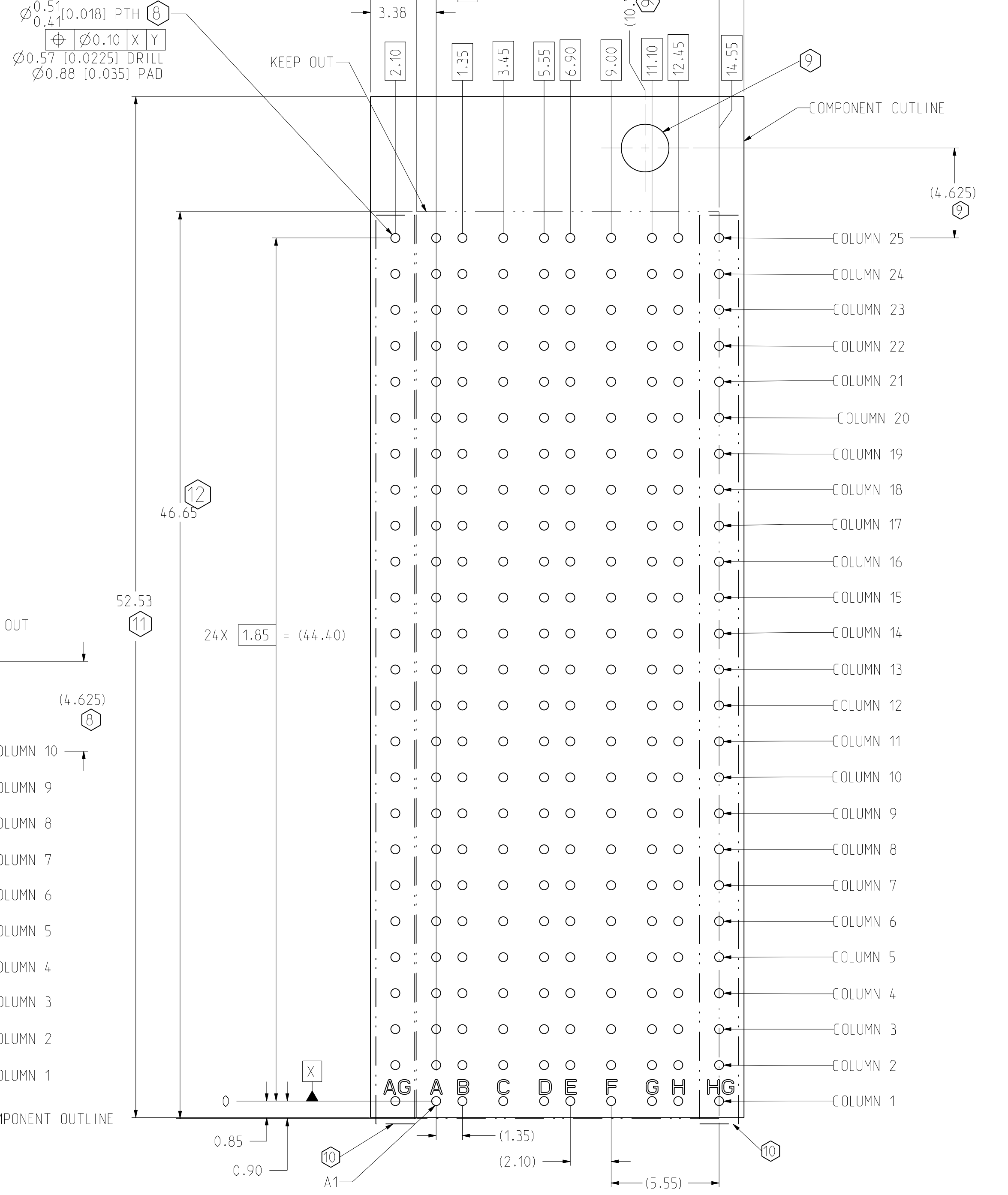
ZONE	REV	SCR NUMBER	DESCRIPTION	BY	DATE	APPROVED
			SEE SHEET 1			



5 POSITION LEFT POLARIZING
GbXe BACKPLANE HOLE PATTERN
COMPONENT SIDE SHOWN
SCALE 6/1



10 POSITION LEFT POLARIZING
GbXe BACKPLANE HOLE PATTERN
COMPONENT SIDE SHOWN
SCALE 6/1



25 POSITION LEFT POLARIZING
GbXe BACKPLANE HOLE PATTERN
COMPONENT SIDE SHOWN
SCALE 6/1

- 12 NO SURFACE TRACES IN THE KEEP OUT ZONES
- 11 SEE DOCUMENT 190-0006-000 FOR KEEPOUT ZONES.
- 10 ADDITIONAL ROWS AG AND HG RECOMMENDED FOR ALL APPLICATIONS. (THESE ROWS SHOULD BE CONNECTED TO GROUND.)
- 9 OPTIONAL HOLE LOCATION FOR GROUNDED PIN OR ADDITIONAL GUIDE PIN SUPPORT. SEE DRAWING C-564-0471-000 FOR DETAIL AND LOCATION. FOR DC BOARD WEIGHT > 8IBS., REFER TO TB-2104 FOR PROPER GUIDE PIN SIZING.
- 8 STATED PAD SIZE MAY REQUIRE FILLETING. FOR DETAILED ROUTING GUIDELINES, SEE TB-2090.

NOTES:

TOLERANCES	DESIGN 03/16/2007 D.SMITH	Amphenol TCS A Division of Amphenol Corporation 200 Innovative Way, Nashua, NH 03062 603.879.3000	PART NO.	SEE PART NUMBER TREE	REV	N/A	
0.0 ±0.25	DRAWN 03/16/2007 HCL-AP		TITLE	RIGHT POLARIZED BACKPLANE MODULE 3 PAIR GbXe	REV	B	
0.00 ±0.13	CHK 03/16/2007 D.SMITH		DRAWING NO.	C-335-4005-500	PROJ TYPE	S1-P1031-CU-HS-BP-SHRD-RTPOL-05	1.0
0.000 ± -	APVD 04/12/2007 D.SMITH		PROJ DRAWING	C-335-4005-500	SCALE	1/1	B.0
ANGLES ± -	UNLESS OTHERWISE SPECIFIED DIMENSIONS ARE IN MM. DECIMAL MARKER IS A PERIOD.	CUSTOMER USE DRAWING		SIZE	D	SHEET 2 OF 2	

