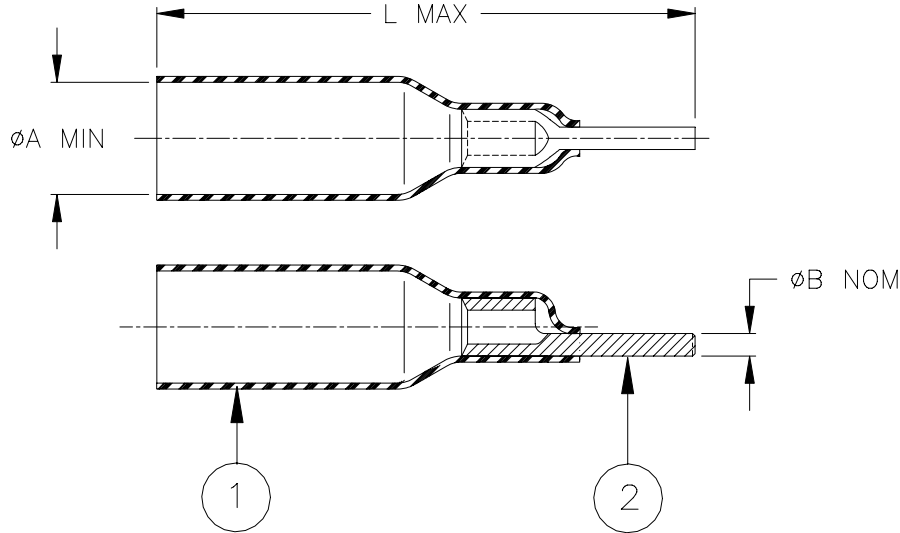


SPECIFICATION CONTROL DRAWING



Product Name	Product Dimensions				Wire Dimensions		
	øA min	øB nom	L max	Color (1)	Size Range mm ² (AWG)	øG	
	[0.160]	[0.080]	[1.200]			min	max
B-106-6201	4.0 [0.160]	2.0 [0.080]	30.5 [1.200]	Red	0.5 - 1.0 (AWG 22-18)	1.4 [0.055]	4.0 [0.160]

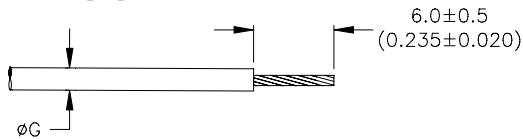
MATERIALS

1. INSULATION SLEEVE: Heat-shrinkable, transparent color (1), radiation cross-linked modified polyamide with thermoplastic adhesive coating inside.
2. PIN TERMINAL: Tin-plated copper alloy.
BASE METAL: C110 Copper.
PLATING: Tin-plated per ASTM B545, Class A.

APPLICATION

1. These controlled crimp devices are designed to terminate a tin-plated or bare copper stranded wire having an insulation rated for at least 75°C to a pin terminal. It will provide a splash proof and strain relief connection.
UL listed wire connector 91J4.
2. Temperature range: -55°C to +125°C.
3. For application tooling and installation, see RPIP-684-00.

For best results, prepare the wire as shown:



DuraSeal is a trademark of Tyco Electronics Corporation.

tyco Electronics		Tyco Electronics Corporation 300 Constitution Drive, Menlo Park, CA. 94025, U.S.A.		<i>Raychem</i>		TITLE: DURASEAL PIN TERMINAL	
Unless otherwise specified dimensions are in millimeters. [Inches dimensions are shown in brackets]					DOCUMENT NO.: B-106-6201		
TOLERANCES: 0.00 N/A 0.0 N/A 0 N/A		ANGLES: N/A ROUGHNESS IN MICRON		Tyco Electronics reserves the right to amend this drawing at any time. Users should evaluate the suitability of the product for their application.			
DRAWN BY: M. FORONDA		CAGE CODE: 06090		REPLACES: D030373		DCR NUMBER: D060179	
SCALE: ---		REV.: A		DATE: 17-Jul-06		SHEET: 1 of 1	