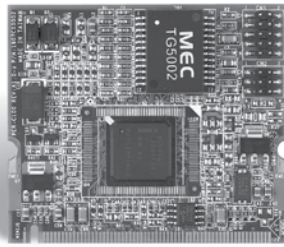


# 9761815202/ 9761815203

Mini PCI Ethernet Module



## Specifications

Main Specifications	
Form Factor	Mini PCI Type 3 A (50.8mm x 59.6mm)
Controller	Realtek 8100C for 10/100Base-TX Ethernet Realtek 8110S for 10/100/1000Base-TX Ethernet
Speed	Supports 10Mbps / 100Mbps / 1000Mbps, auto-negotiation
Function	IEEE 802.3x compliant flow control support IEEE 802.1Q Virtual LAN support Wake-on-LAN support
Power Management	ACPI and PCI Power Management
Operating Temperature	32°F~ 140°F (0°C ~ 60°C)

## Ordering Information

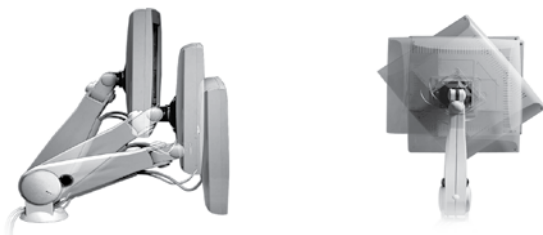
- **9761815202**  
10/100Base-TX Ethernet Kit, Realtek 8110C
- **9761815203**  
10/100/1000Base-TX Ethernet Kit, Realtek 8110S

## Features

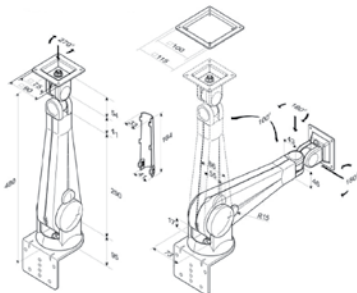
- Mini PCI Type 3 Interface
- Single 10/100Base-TX or 10/100/1000Base-TX Ethernet Port
- Supports Wake-on-LAN Function

# ARM-LA0115

LCD Flat Panel Monitor Arm (VESA 75/100)



**Dimension** Unit: mm



## Features

- SUSPA Series System Ensures The Stability Of Product And Strength Of Quality
- Supports Monitors From 8 Kg To 15 Kg Depending Each User's Demands
- Y-Y Connection Adjusts In Different Positions For Comfortable Viewing
- Cable Location Helps To Organize The Cables In Order
- Adjusting Knob Adapts To Different Monitor Weights
- Screen Pivots 180° Front Or Back
- Screen Pivots 180° Up Or Down
- Screen Pivots 270° Left Or Right
- Gross Weight: 11 lb (5 Kg)
- Supports AOP-9150, AOP-9120, AOP-8120, AOP-8150, APC-9172, APC-8152, APC-8172, APC-8122, OPD-212A, OPD-215A, OPD-217A, AMB-232

## Ordering Information

- **ARM-LA0115**  
LCD Flat Panel Monitor Arm