

Avago

20 & 26.5mm

Range



Carclo Technical Plastics

111 Buckingham Avenue, Slough, Berkshire SL1 4PF ENGLAND / 600 Depot Street Latrobe PA. 15650 USA

Web: www.carclo-optics.com e-mail: sales@carclo-optics.com

Tel UK: 0044 (0) 1753 575011 Tel USA 00 (1) 724 539 6982



carclo
technical plastics

Avago Aveon 20 & 26.5mmRange

Carclo Technical Plastics

111 Buckingham Avenue, Slough, Berkshire SL1 4PF ENGLAND / 600 Depot Street Latrobe PA. 15650 USA

Web: www.carclo-optics.com e-mail: sales@carclo-optics.com

Tel UK: 0044 (0) 1753 575011 Tel USA 00 (1) 724 539 6982



carclo
technical plastics

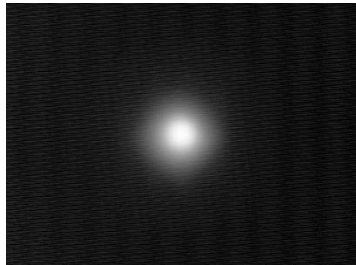
Avago Aveon 20mm range

Part No.	Description	White		
		FWHM#	EFF	Cd/lm
10199	Plain Tight	9.25*9.07	85.9%	19.76
10200	Frosted Narrow	12.98*12.64	83.2%	11.33
10210	Ripple Medium	22.16*21.37	85.9%	5.79
10201	Medium Frosted	21.86*21.67	79.9%	3.98
10211	Ripple Wide	45.21*45.26	83.4%	1.68
10202	Wide Frosted	31.51*31.17	79.0%	2.46
10203	Elliptical	47.99*9.54	83.1%	4.58
10204	Elliptical Orthogonal*	47.45*10.01	81.8%	4.47
10357	wide angle reflector			

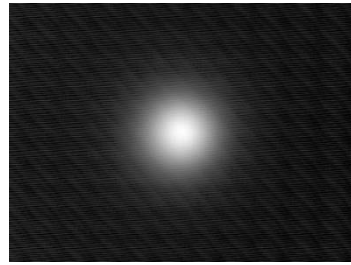
*Orthogonal is the elliptical beam turned through 90deg.

#Full Width Half Maximum i.e. total viewing angle

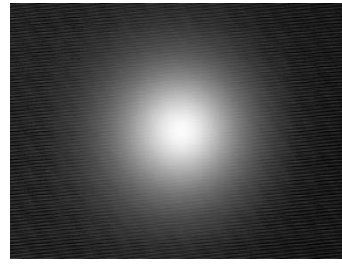
Base of lens to PCB height is 3.6mm



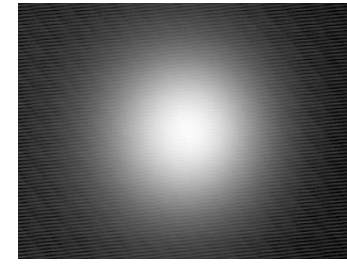
10199



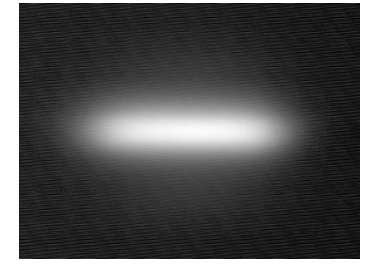
10200



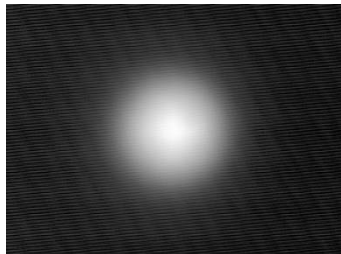
10201



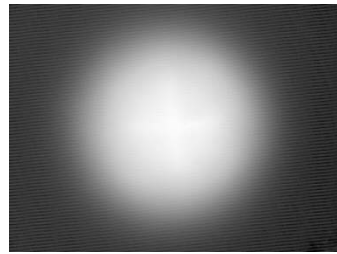
10202



10203 & 10204



10210



10211

Avago Aveon 26.5mm range

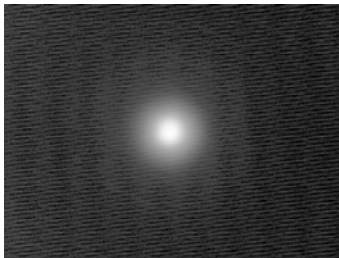
Part No.	Description	White		
		FWHM#	EFF	Cd/lm
10048	Plain Tight	6.91*6.89	84.9%	25.65
10124	Frosted Narrow	11.27*10.94	81.8%	13.79
10108	Medium Frosted	22.32*21.97	78.7%	3.92
10260	Frosted Wide	Optic will not fit LED		
10049	Elliptical	44.01*8.14	80.3%	5.80
10224	Elliptical Orthogonal*	48.25*8.14	80.8%	5.35
10234	Elliptical Ramp Optic	45.61*7.83	80.0%	5.57



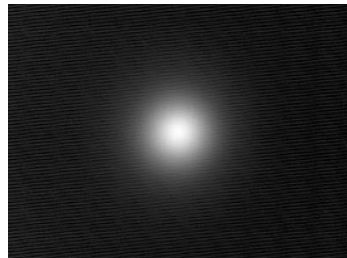
Part No.	Colour	Description
10449	White	4.3mm foot (not Stocked)
10459	White	2.0mm foot (Not Stocked)
10469	White	0.8mm foot (Stocked)
10479	Black	4.3mm foot (Not Stocked)
10489	Black	2.0mm foot (Not Stocked)
10499	Black	0.8mm foot (Not Stocked)

*Orthogonal is the elliptical beam turned through 90deg.

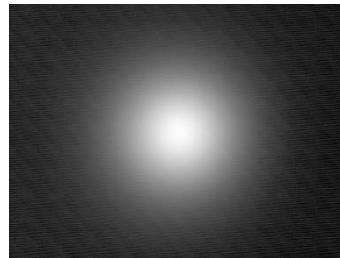
Full Width Half Maximum i.e. total viewing angle



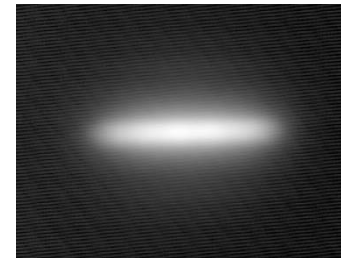
10048



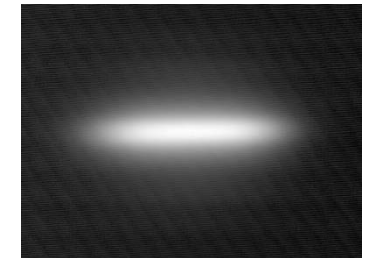
10124



10108



10049 & 10224



10234

Avago Jade 20 & 26.5mm Range

Carclo Technical Plastics

111 Buckingham Avenue, Slough, Berkshire SL1 4PF ENGLAND / 600 Depot Street Latrobe PA. 15650 USA

Web: www.carclo-optics.com e-mail: sales@carclo-optics.com

Tel UK: 0044 (0) 1753 575011 Tel USA 00 (1) 724 539 6982



carclo
technical plastics

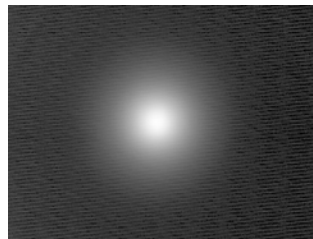
Avago Jade 20mm range

Part No.	Description	White		
		FWHM#	EFF	Cd/lm
10003	Plain Tight	11.27*11.25	90.1%	12
10138	Frosted Narrow	16.53*16.80	91.6%	7.59
10003/15	Ripple Medium	20.14*20.54	90.7%	3.92
10139	Medium Frosted	23.22*23.03	87.4%	4.25
10003/25	Ripple Wide	36.33*34.19	85.3%	2.24
10140	Wide Frosted	31.37*31.60	82.2%	2.51
10003/L25	Elliptical	44.14*14.80	89.3%	4.01
10192	Elliptical Orthogonal*	46.94*13.72	90.1%	3.99
10034	wide angle reflector			

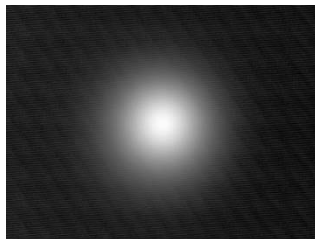
*Orthogonal is the elliptical beam turned through 90deg.

#Full Width Half Maximum i.e. total viewing angle

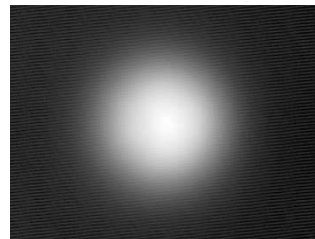
Base of lens to PCB height is 3.6mm



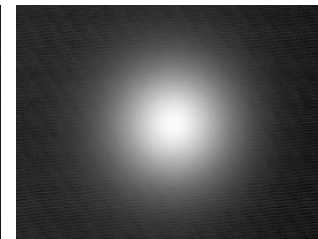
10003



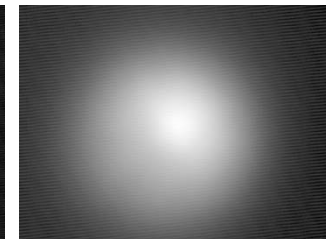
10138



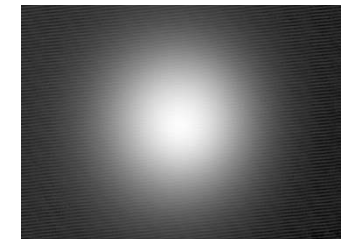
10003/15



10139



10003/25



10140

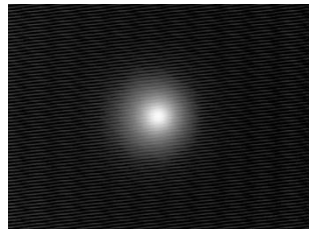
Avago Jade 26.5mm range

Part No.	Description	White		
		FWHM#	EFF	Cd/lm
10048	Plain Tight	8.31*8.14	88.8%	20.07
10124	Frosted Narrow	13.59*13.26	86.6%	11.15
10108	Medium Frosted	23.82*23.78	81.7%	4.01
10260	Frosted Wide	28.15*28.09	82.1%	3.05
10049	Elliptical	43.87*10.94	85.5%	5.40
10224	Elliptical Orthogonal*	47.19*11.25	85.1%	4.60
10234	Elliptical Ramp Optic	45.17*10.94	85.1%	5.30

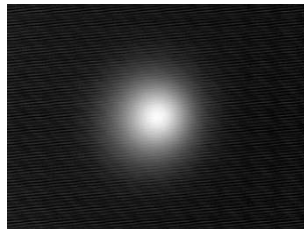
Part No.	Colour	Description
10441	White	4.3mm foot (not Stocked)
10451	White	2.0mm foot (Not Stocked)
10461	White	0.8mm foot (Stocked)
10471	Black	4.3mm foot (Not Stocked)
10481	Black	2.0mm foot (Not Stocked)
10491	Black	0.8mm foot (Not Stocked)

*Orthogonal is the elliptical beam turned through 90deg.

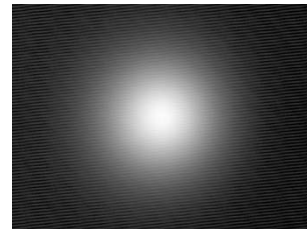
Full Width Half Maximum i.e. total viewing angle



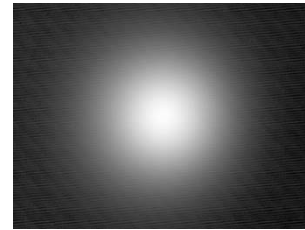
10048



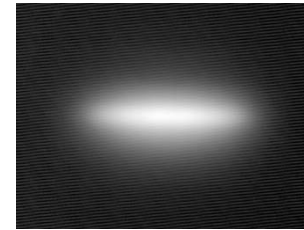
10124



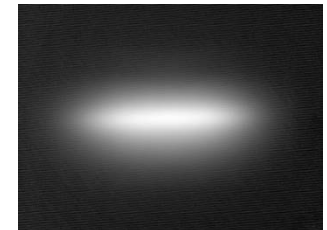
10108



10260



1049 & 10224



10234

Avago Moonstone 20 & 26.5mm Range



Carclo Technical Plastics

111 Buckingham Avenue, Slough, Berkshire SL1 4PF ENGLAND / 600 Depot Street Latrobe PA. 15650 USA

Web: www.carclo-optics.com e-mail: sales@carclo-optics.com

Tel UK: 0044 (0) 1753 575011 Tel USA 00 (1) 724 539 6982

Avago Moonstone 20mm range

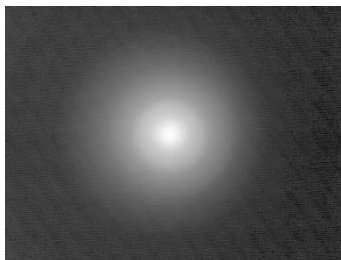
Part No.	Description	Warm White		
		FWHM#	EFF	Cd/lm
10199	Plain Tight	11.12*11.09	88.5%	8.19
10200	Frosted Narrow	17.81*17.41	88%	5.31
10210	Ripple Medium	26.46*25.97	87.7%	3.24
10201	Medium Frosted	27.77*27.28	82.8%	2.43
10211	Ripple Wide	46.49*46.02	83.9%	1.24
10202	Wide Frosted	39.32*40.35	80.6%	1.41
10203	Elliptical	45.97*17.33	85.7%	2.66
10204	Elliptical Orthogonal*	45.23*20.03	84.5%	2.29
10357	wide angle reflector			



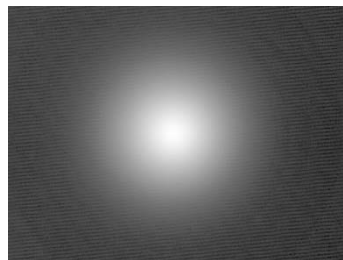
*Orthogonal is the elliptical beam turned through 90deg.

#Full Width Half Maximum i.e. total viewing angle

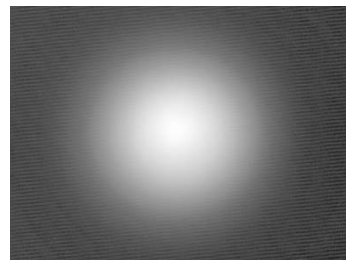
Base of lens to PCB height is 3.6mm



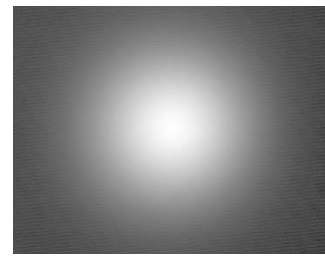
10199



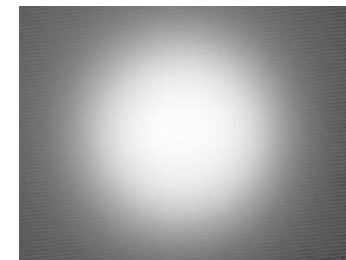
10200



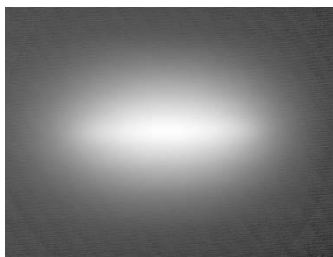
10210



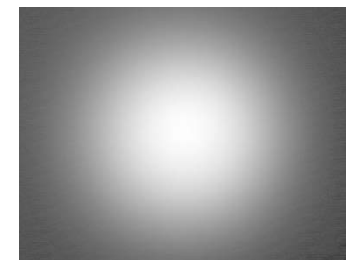
10201



10211



10203 & 10204



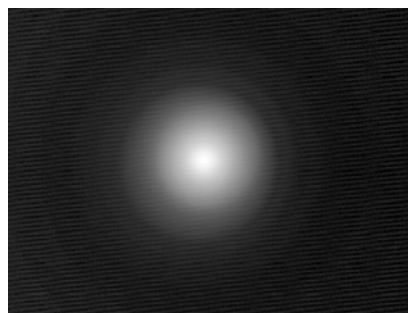
10202

Avago Moonstone 26.5mm range

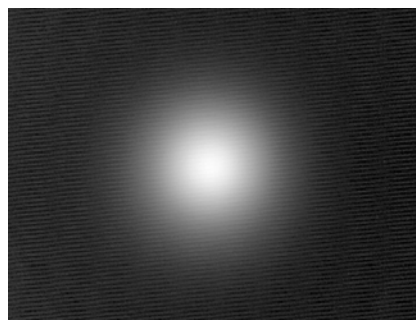
Part No.	Description	Warm White		
		FWHM [#]	EFF	Cd/lm
10391	Plain Tight	12	87.2%	10.50
10392	Frosted Narrow	17.2	83.1%	6.00
10393	Medium Frosted	25.5	78.5%	2.76
10394	Frosted Wide			
10395	Elliptical	44*16	83.1%	2.99

WHITE HOLDERS			BLACK HOLDERS		
4.3 PEG Not Stocked	2.0 PEG Not stocked	0.8 PEG Stocked	4.3 PEG Not Stocked	2.0 PEG Not Stocked	0.8 PEG Not Stocked
10449	10459	10469	10479	10489	10499

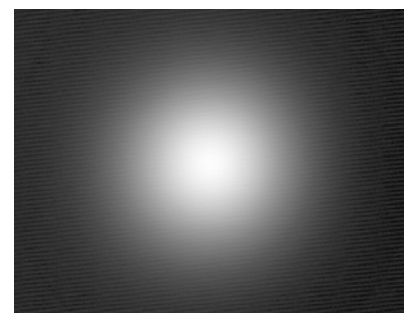
Results for white LED



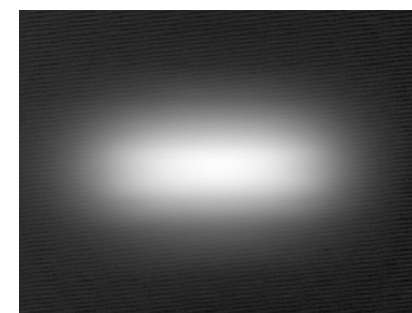
10391



10392



10393



10395

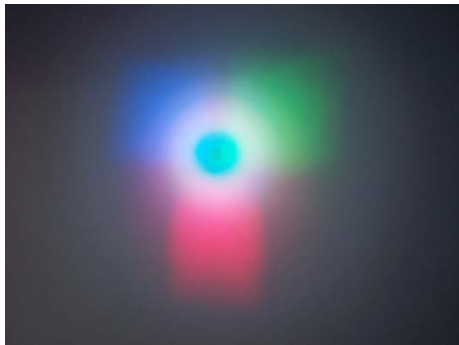
Avago RGB Moonstone 20mm range

Part No.	Description	White		
		FWHM#	EFF	Cd/lm
10199	Plain Tight	13.10*13.54	86.2%	12.17
10200	Frosted Narrow	17.81*17.41	85.1%	6.71
10201	Medium Frosted	25.43*25.96	81.0%	2.73
10202	Wide Frosted	38.02*38.09	76.7%	1.38

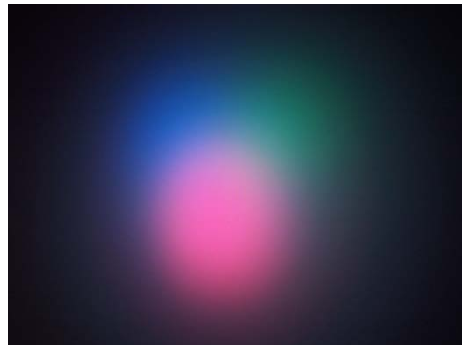
*Orthogonal is the elliptical beam turned through 90deg.

#Full Width Half Maximum i.e. total viewing angle

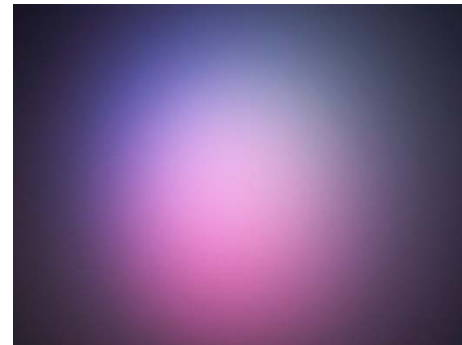
Base of lens to PCB height is 3.6mm



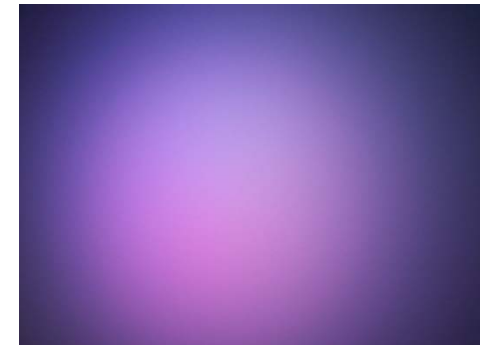
10199



10200



10201

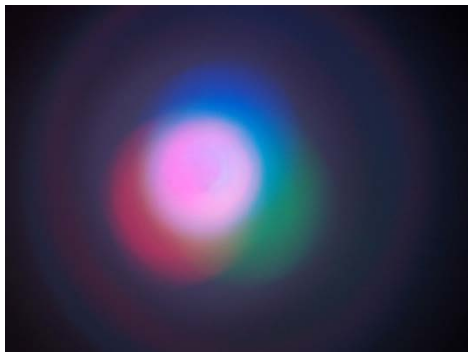


10202

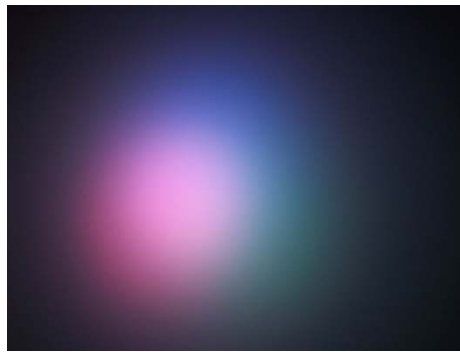
Avago RGB Moonstone 26.5mm range

Part No.	Description	Warm White		
		FWHM [#]	EFF	Cd/lm
10391	Plain Tight	12.2	87.2%	13
10392	Frosted Narrow	15.9	88%	6.30
10393	Medium Frosted	26.5	81%	2.4
10394	Frosted Wide	29.1	84.7%	2.2
10395	Elliptical			

WHITE HOLDERS			BLACK HOLDERS		
4.3 PEG Not Stocked	2.0 PEG Not stocked	0.8 PEG Stocked	4.3 PEG Not Stocked	2.0 PEG Not Stocked	0.8 PEG Not Stocked
10449	10459	10469	10479	10489	10499



10391



10392



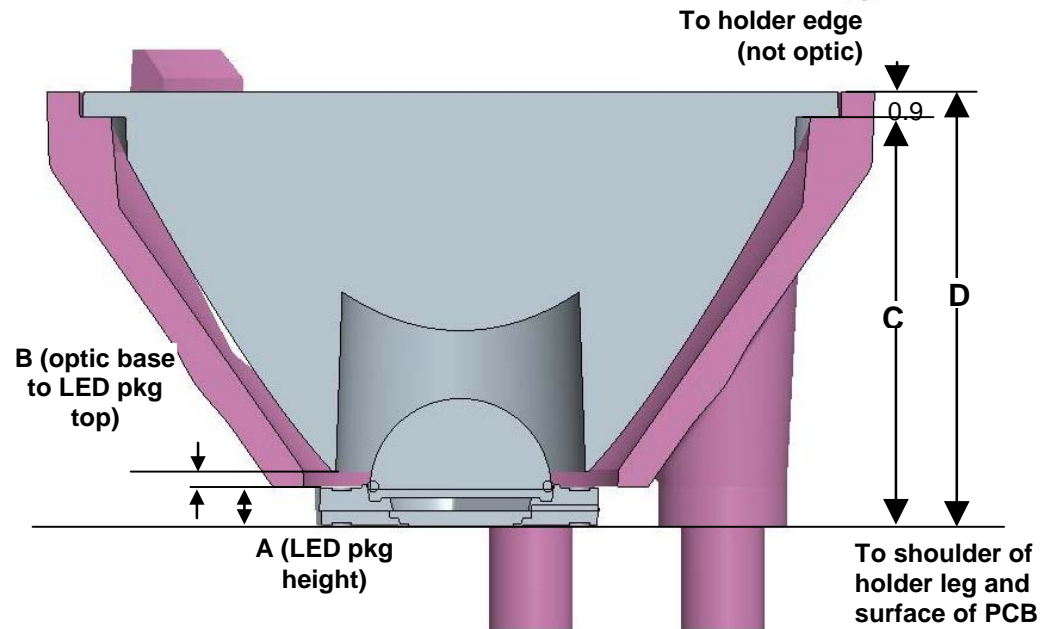
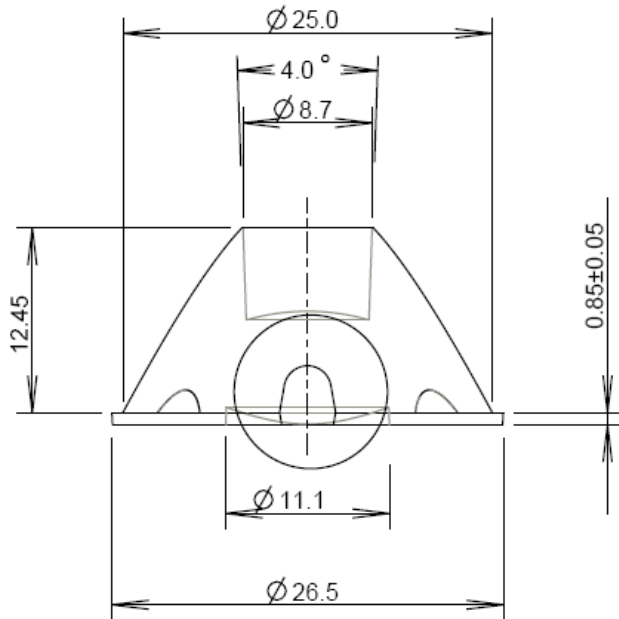
10393



10394

26.5mm OPTIC

Part No.	TYPE
10391	Plain Tight
10392	Narrow Frosted
10393	Medium Frosted
10394	Wide Frosted
10395	Elliptical
10396	Elliptical Ortho



Notes:

- CARCLO multi-chip holder compatible with LED package mounted on 19.9mm (across flats) star board, otherwise drill holes on PCB for location pegs on legs. Refer to Drawing 60475 for hole separation
- The multichip holder leg height includes an extra 1.0mm for the AcuLED since only a 13mm (across flats) star board is available. The CARCLO holder reaches over the AcuLED star board so that the holder sits directly on the PCB (and not the star board).

26.5mm Holder location holes

