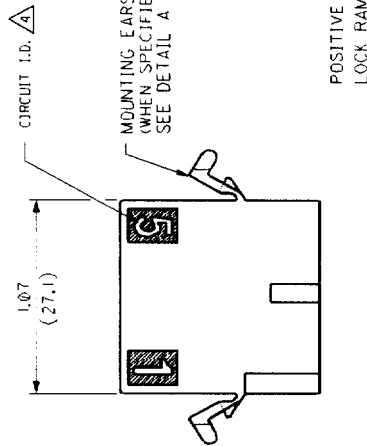
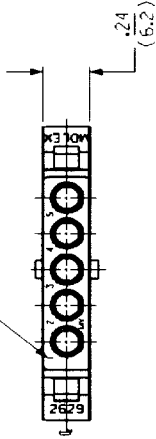
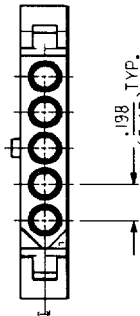


RECEPTACLE

CIRCUIT NUMBERS

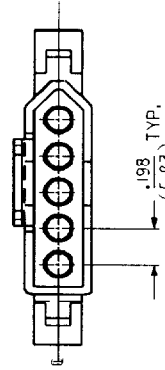
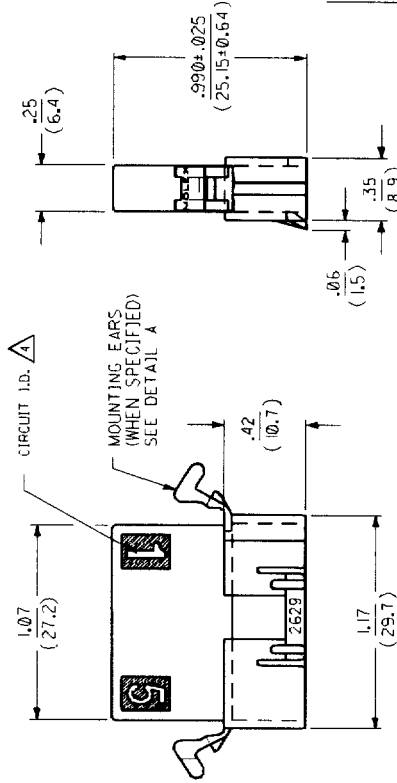
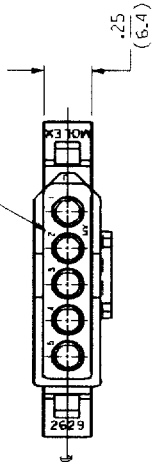


VIEW OF RECEPTACLE VERSION WITH PASSIVE LOCK RAMPS



PLUG

CIRCUIT NUMBERS



DATE	BY	CHKD	APP'D	SCALE
8/1/98	RAS	KBW	RW	2:1

DATE	BY	CHKD	APP'D	SCALE
8/1/98	RAS	KBW	RW	2:1

DATE	BY	CHKD	APP'D	SCALE
8/1/98	RAS	KBW	RW	2:1

DATE	BY	CHKD	APP'D	SCALE
8/1/98	RAS	KBW	RW	2:1

REV	DATE	BY	CHKD	APP'D	SCALE
1	8/1/98	RAS	KBW	RW	2:1
2	8/1/98	RAS	KBW	RW	2:1

REV	DATE	BY	CHKD	APP'D	SCALE
1	8/1/98	RAS	KBW	RW	2:1
2	8/1/98	RAS	KBW	RW	2:1

REV	DATE	BY	CHKD	APP'D	SCALE
1	8/1/98	RAS	KBW	RW	2:1
2	8/1/98	RAS	KBW	RW	2:1

REV	DATE	BY	CHKD	APP'D	SCALE
1	8/1/98	RAS	KBW	RW	2:1
2	8/1/98	RAS	KBW	RW	2:1

REV	DATE	BY	CHKD	APP'D	SCALE
1	8/1/98	RAS	KBW	RW	2:1
2	8/1/98	RAS	KBW	RW	2:1

REV	DATE	BY	CHKD	APP'D	SCALE
1	8/1/98	RAS	KBW	RW	2:1
2	8/1/98	RAS	KBW	RW	2:1

REV	DATE	BY	CHKD	APP'D	SCALE
1	8/1/98	RAS	KBW	RW	2:1
2	8/1/98	RAS	KBW	RW	2:1

REV	DATE	BY	CHKD	APP'D	SCALE
1	8/1/98	RAS	KBW	RW	2:1
2	8/1/98	RAS	KBW	RW	2:1

REV	DATE	BY	CHKD	APP'D	SCALE
1	8/1/98	RAS	KBW	RW	2:1
2	8/1/98	RAS	KBW	RW	2:1

REV	DATE	BY	CHKD	APP'D	SCALE
1	8/1/98	RAS	KBW	RW	2:1
2	8/1/98	RAS	KBW	RW	2:1

REV	DATE	BY	CHKD	APP'D	SCALE
1	8/1/98	RAS	KBW	RW	2:1
2	8/1/98	RAS	KBW	RW	2:1

REV	DATE	BY	CHKD	APP'D	SCALE
1	8/1/98	RAS	KBW	RW	2:1
2	8/1/98	RAS	KBW	RW	2:1

LEGEND:

TYPE:
 P = PLUG
 R = RECEPTACLE

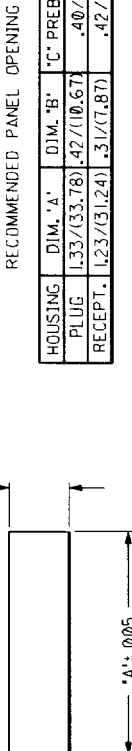
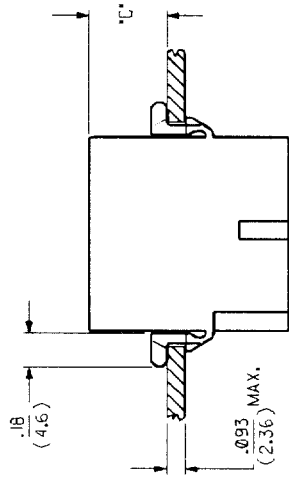
PLUG FEATURES:
 BLANK = WITH PREBENT EARS
 1 = WITHOUT EARS

RECEPTACLE FEATURES:
 BLANK = WITH PREBENT EARS, WITH POSITIVE LOCK RAMP
 1 = WITHOUT EARS, WITH POSITIVE LOCK RAMP
 2 = WITHOUT EARS, WITH PASSIVE LOCK RAMP

COLOR:
 BLANK = NATURAL COLOR
 AM = AMBER BK = BLACK BU = BLUE
 BN = BROWN GY = GRAY GN = GREEN
 OR = ORANGE RD = RED YW = YELLOW

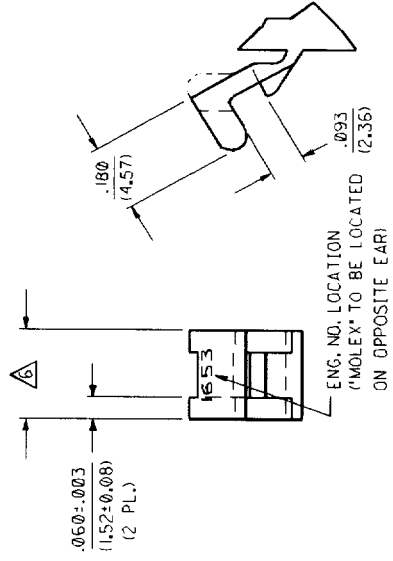
MATERIAL:
 BLANK = NYLON TYPE 66, 94V-2 PER SMES-128-A*

PLUG		RECEPTACLE	
ORDER NO	ENG NO	ORDER NO	ENG NO
03-09-2057	2629-P1	03-09-1057	2629-R1
PRELIMINARY	2629-P	PRELIMINARY	2629-R
		03-09-1054	2629-R2



HOUSING	DIM. 'A'	DIM. 'B'	'C' - PREBENT EAR
PLUG	1.33/(33.78)	.42/(10.67)	.40/(10.1)
RECEPT.	1.23/(31.24)	.31/(7.87)	.42/(10.6)

- NOTES:
1. MOLEX PRODUCT SPEC 02-09 APPLIES.
 2. 2629-P* (PLUG) WILL ACCEPT 2629-R* 5 CIRCUIT RECEPTACLES OR 1490-R* 4 CIRCUIT RECEPTACLE.
 3. ACCEPTS MOLEX .093 SERIES TERMINALS.
 4. CIRCUIT I.D. NUMBERS ON HOUSING APPEAR ON PARTS FROM TOOLS BUILT AFTER 1/6/92.
 5. LOCK RAMP ON THIS SIDE OF PART AVAILABLE IN EITHER A POSITIVE LOCK RAMP OR PASSIVE LOCK RAMP STYLE.
 6. FOR DIMENSION, SEE SHEET 1.



DETAIL A

.093/(2.36) PREBENT MOUNTING EAR
 (SCALE 4:1)

REV.	DATE	BY	CHKD.	DESCRIPTION
1	2/3/89	FW		REVISED TO INCLUDE MOUNTING EAR
2				

REVISIONS

SEE CHART SD-2629-*

MOLEX INCORPORATED

5 CIRCUIT RECEPTACLE

093/(2.36) HOUSINGS

PLUG & RECEPTACLE

REVISIONS

DATE

BY

CHKD.

DESCRIPTION