

**PLEASE CHECK WWW.MOLEX.COM FOR LATEST PART INFORMATION**

**Part Number:** [0395100005](#)  
**Status:** **Active**  
**Description:** 3.81mm (.150") Pitch Eurostyle™ Horizontal Plug, 5 Circuits

**Documents:**

[3D Model](#) [Product Specification PS-39500-001 \(PDF\)](#)  
[Drawing \(PDF\)](#) [RoHS Certificate of Compliance \(PDF\)](#)

**General**

|                             |                           |
|-----------------------------|---------------------------|
| Product Family              | Terminal Blocks           |
| Series                      | <a href="#">39510</a>     |
| Application                 | Wire-to-Board             |
| Component Type              | Plug                      |
| Product Literature Order No | USA-355                   |
| Product Name                | ESE, Eurostyle™ Pluggable |
| Type                        | Euro Block                |

**Physical**

|                               |                    |
|-------------------------------|--------------------|
| Circuits (Loaded)             | 5                  |
| Entry Angle                   | Vertical           |
| Lock to Mating Part           | None               |
| Number of Rows                | 1                  |
| Orientation                   | Horizontal         |
| Panel Mount                   | No                 |
| Pitch - Mating Interface (in) | 0.150 In           |
| Pitch - Mating Interface (mm) | 3.81 mm            |
| Polarized to Mating Part      | Yes                |
| Stackable                     | No                 |
| Temperature Range - Operating | -40°C to +105°C    |
| Wire Size AWG                 | 16, 18, 20, 22, 24 |
| Wire Size mm²                 | 0.20 - 1.31        |

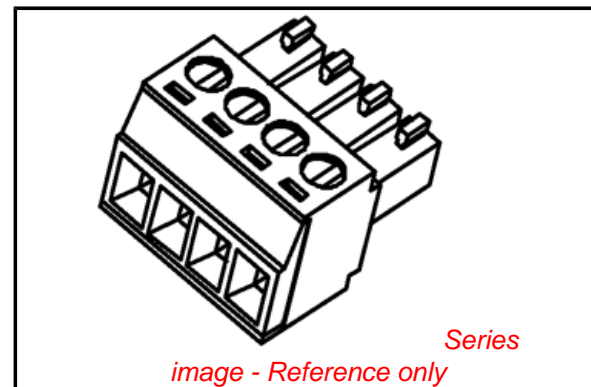
**Electrical**

|                               |      |
|-------------------------------|------|
| Current - Maximum per Contact | 8A   |
| Voltage - Maximum             | 300V |

**Material Info**

**Reference - Drawing Numbers**

|                       |              |
|-----------------------|--------------|
| Product Specification | PS-39500-001 |
| Sales Drawing         | SD-39510-001 |



**EU RoHS**

**ELV and RoHS  
Compliant**  
**REACH SVHC**  
 Not Reviewed  
**Halogen-Free**  
**Status**  
**Not Reviewed**

**China RoHS**



**Need more information on product  
environmental compliance?**

Email [productcompliance@molex.com](mailto:productcompliance@molex.com)  
 For a multiple part number RoHS Certificate of  
 Compliance, [click here](#)

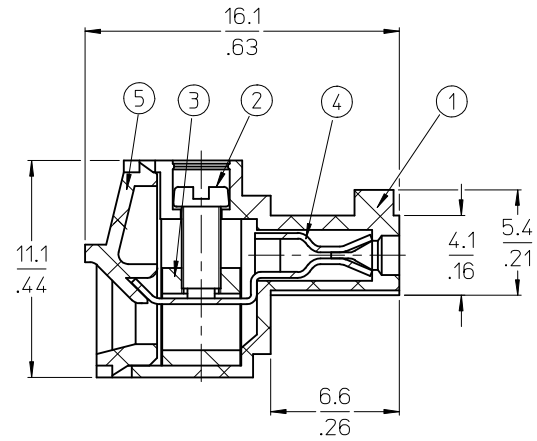
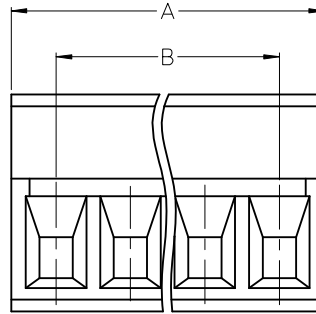
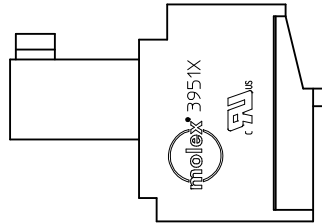
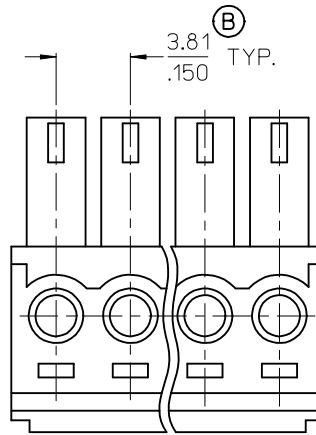
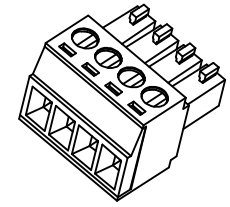
Please visit the [Contact Us](#) section for any  
 non-product compliance questions.

**Search Parts in this Series**

[39510Series](#)

**Mates With**

Most 3.81mm (.150") Pitch Industry  
 Standard PCB Headers, [39511](#) Vertical PCB  
 Header, [39512](#) Horizontal PCB Header



**SPECIFICATIONS:**

**1. MATERIAL:**

- (1). BODY: NYLON 66 (PA 66, UL94V-0).
- (2). SCREW: STEEL.
- (3). CAGE (\*): BRASS
- (4). CONTACT: BRASS
- (5). COVER: NYLON 66 (PA 66, UL94V-0).

**(B) 2. PRODUCT SPECIFICATION: PS-39500-001.**

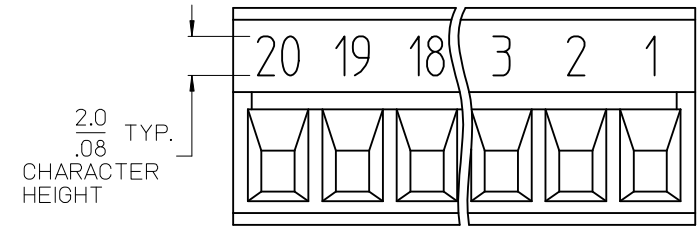
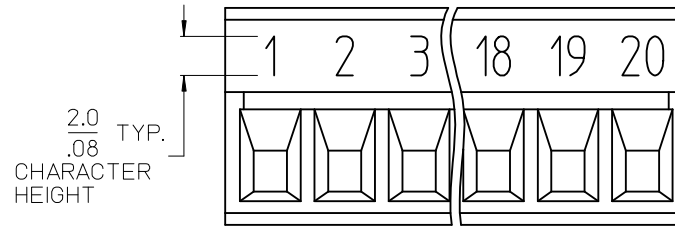
- 3. WIRE RANGE: 30 - 16AWG.
- 4. TORQUE: 2 in-lbs.
- 5. WIRE STRIP LENGTH: 6.50/.256.
- 6. NUMBER OF CIRCUIT POSITIONS AVAILABLE = 2 THROUGH 20.

**(B) 7. ASSEMBLY IS ROHS COMPLIANT BY EXEMPTION.**

COMPONENTS MARKED WITH AN ASTERISK (\*) ARE ROHS COMPLIANT BY EXEMPTION, ALL OTHERS ARE ROHS COMPLIANT.

|   |                  |   |  |   |                              |                      |                        |
|---|------------------|---|--|---|------------------------------|----------------------|------------------------|
| ADD IMPRINTING<br>EC NO: WNA2009-0837<br>DRAWN: CLYORK 2009/06/16<br>CHKD: RDEROSS 2009/06/17<br>APPR: RDEROSS 2009/06/17 | DESCRIPTION<br>B | QUALITY SYMBOLS<br>▽=0<br>▽=0   | GENERAL TOLERANCES (UNLESS SPECIFIED)  | DIMENSION STYLE<br>MM/IN                | SCALE<br>4:1                 | DESIGN UNITS<br>INCH | THIRD ANGLE PROJECTION |
|   |                  | 4 PLACES ± --- ± ---<br>3 PLACES ± --- ± .005<br>2 PLACES ± 0.13 ± .01<br>1 PLACE ± 0.3 ± --- | DRAWN BY DATE<br>EHILE 2006/03/20      | TITLE<br>3.81MM, EURO PLUG, RIGHT ANGLE |                              |                      |                        |
|   |                  | ANGULAR ± 2 °   | CHECKED BY DATE<br>EHILE 2006/03/20    |   |                              |                      |                        |
|   |                  | DRAFT WHERE APPLICABLE MUST REMAIN WITHIN DIMENSIONS  | APPROVED BY DATE<br>RDEROSS 2006/03/20 | MATERIAL NO.<br>SEE CHART               | DOCUMENT NO.<br>SD-39510-001 | SHEET NO.<br>1 OF 2  |                        |

| Circuit size | Material Numbers |           |           |                  |           |           |                  |           |           |                  |           |           | Dimensional Information |      |       |      |      |    |      |
|--------------|------------------|-----------|-----------|------------------|-----------|-----------|------------------|-----------|-----------|------------------|-----------|-----------|-------------------------|------|-------|------|------|----|------|
|              | Black            |           |           |                  |           |           | Green            |           |           |                  |           |           |                         |      |       |      |      |    |      |
|              | 100% Tin         |           |           | 30 u" Gold       |           |           | 100% Tin         |           |           | 30 u" Gold       |           |           | Dim. A                  |      | Dim B |      |      |    |      |
|              | Printing Options |           |           | Printing Options |           |           | Printing Options |           |           | Printing Options |           |           | mm                      | inch | mm    | inch |      |    |      |
|              | None             | 10A       | 11A       | None             | 10A       | 11A       | None             | 10A       | 11A       | None             | 10A       | 11A       | None                    | 10A  | 11A   | mm   | inch | mm | inch |
| 2            | 395100002        | 395100102 | 395100202 | 395100502        | 395100602 | 395100702 | 395105002        | 395105102 | 395105202 | 395105502        | 395105602 | 395105702 | 8.4                     | 0.33 | 3.8   | 0.15 |      |    |      |
| 3            | 395100003        | 395100103 | 395100203 | 395100503        | 395100603 | 395100703 | 395105003        | 395105103 | 395105203 | 395105503        | 395105603 | 395105703 | 12.2                    | 0.48 | 7.6   | 0.30 |      |    |      |
| 4            | 395100004        | 395100104 | 395100204 | 395100504        | 395100604 | 395100704 | 395105004        | 395105104 | 395105204 | 395105504        | 395105604 | 395105704 | 16.0                    | 0.63 | 11.4  | 0.45 |      |    |      |
| 5            | 395100005        | 395100105 | 395100205 | 395100505        | 395100605 | 395100705 | 395105005        | 395105105 | 395105205 | 395105505        | 395105605 | 395105705 | 19.8                    | 0.78 | 15.2  | 0.60 |      |    |      |
| 6            | 395100006        | 395100106 | 395100206 | 395100506        | 395100606 | 395100706 | 395105006        | 395105106 | 395105206 | 395105506        | 395105606 | 395105706 | 23.7                    | 0.93 | 19.1  | 0.75 |      |    |      |
| 7            | 395100007        | 395100107 | 395100207 | 395100507        | 395100607 | 395100707 | 395105007        | 395105107 | 395105207 | 395105507        | 395105607 | 395105707 | 27.5                    | 1.08 | 22.9  | 0.90 |      |    |      |
| 8            | 395100008        | 395100108 | 395100208 | 395100508        | 395100608 | 395100708 | 395105008        | 395105108 | 395105208 | 395105508        | 395105608 | 395105708 | 31.3                    | 1.23 | 26.7  | 1.05 |      |    |      |
| 9            | 395100009        | 395100109 | 395100209 | 395100509        | 395100609 | 395100709 | 395105009        | 395105109 | 395105209 | 395105509        | 395105609 | 395105709 | 35.1                    | 1.38 | 30.5  | 1.20 |      |    |      |
| 10           | 395100010        | 395100110 | 395100210 | 395100510        | 395100610 | 395100710 | 395105010        | 395105110 | 395105210 | 395105510        | 395105610 | 395105710 | 38.9                    | 1.53 | 34.3  | 1.35 |      |    |      |
| 11           | 395100011        | 395100111 | 395100211 | 395100511        | 395100611 | 395100711 | 395105011        | 395105111 | 395105211 | 395105511        | 395105611 | 395105711 | 42.7                    | 1.68 | 38.1  | 1.50 |      |    |      |
| 12           | 395100012        | 395100112 | 395100212 | 395100512        | 395100612 | 395100712 | 395105012        | 395105112 | 395105212 | 395105512        | 395105612 | 395105712 | 46.5                    | 1.83 | 41.9  | 1.65 |      |    |      |
| 13           | 395100013        | 395100113 | 395100213 | 395100513        | 395100613 | 395100713 | 395105013        | 395105113 | 395105213 | 395105513        | 395105613 | 395105713 | 50.3                    | 1.98 | 45.7  | 1.80 |      |    |      |
| 14           | 395100014        | 395100114 | 395100214 | 395100514        | 395100614 | 395100714 | 395105014        | 395105114 | 395105214 | 395105514        | 395105614 | 395105714 | 54.1                    | 2.13 | 49.5  | 1.95 |      |    |      |
| 15           | 395100015        | 395100115 | 395100215 | 395100515        | 395100615 | 395100715 | 395105015        | 395105115 | 395105215 | 395105515        | 395105615 | 395105715 | 57.9                    | 2.28 | 53.3  | 2.10 |      |    |      |
| 16           | 395100016        | 395100116 | 395100216 | 395100516        | 395100616 | 395100716 | 395105016        | 395105116 | 395105216 | 395105516        | 395105616 | 395105716 | 61.8                    | 2.43 | 57.2  | 2.25 |      |    |      |
| 17           | 395100017        | 395100117 | 395100217 | 395100517        | 395100617 | 395100717 | 395105017        | 395105117 | 395105217 | 395105517        | 395105617 | 395105717 | 65.6                    | 2.58 | 61.0  | 2.40 |      |    |      |
| 18           | 395100018        | 395100118 | 395100218 | 395100518        | 395100618 | 395100718 | 395105018        | 395105118 | 395105218 | 395105518        | 395105618 | 395105718 | 69.4                    | 2.73 | 64.8  | 2.55 |      |    |      |
| 19           | 395100019        | 395100119 | 395100219 | 395100519        | 395100619 | 395100719 | 395105019        | 395105119 | 395105219 | 395105519        | 395105619 | 395105719 | 73.2                    | 2.88 | 68.6  | 2.70 |      |    |      |
| 20           | 395100020        | 395100120 | 395100220 | 395100520        | 395100620 | 395100720 | 395105020        | 395105120 | 395105220 | 395105520        | 395105620 | 395105720 | 77.0                    | 3.03 | 72.4  | 2.85 |      |    |      |



ⓑ 10A IMPRINTING

ⓑ 11A IMPRINTING

|   |                               |   |  |                      |            |              |              |                                |  |  |  |
|---|-------------------------------|---|--|----------------------|------------|--------------|--------------|--------------------------------|--|--|--|
| SEE SHEET ONE<br>EC NO: WNA2009-0837<br>DRAWN: CLYORK 2009/06/16<br>CHKD: RDEROSS 2009/06/17<br>APPR: RDEROSS 2009/06/17<br>B | QUALITY SYMBOLS<br>▽=0<br>▽=0 | GENERAL TOLERANCES (UNLESS SPECIFIED)   |  | DIMENSION STYLE      |            | SCALE        | DESIGN UNITS | THIRD ANGLE PROJECTION         |  |  |  |
|   |                               |   |  | MM/IN                |            | 4:1          | INCH         |                                |  |  |  |
|   |                               |   |  | mm                   | INCH       | DRAWN BY     | DATE         | TITLE                          |  |  |  |
|   |                               |   |  | 4 PLACES ± --- ± --- | ± ---      | EHILE        | 2006/03/20   | 3.81MM, EURO PLUG, RIGHT ANGLE |  |  |  |
|   |                               | 3 PLACES ± --- ± .005   |  | CHECKED BY           | DATE       |              |              |                                |  |  |  |
|   |                               | 2 PLACES ± 0.13 ± .01   |  | EHILE                | 2006/03/20 |              |              |                                |  |  |  |
|   |                               | 1 PLACE ± 0.3 ± ---   |  | APPROVED BY          | DATE       |              |              |                                |  |  |  |
|   |                               | ANGULAR ± 2 °   |  | RDEROSS              | 2006/03/20 |              |              |                                |  |  |  |
|   |                               | DRAFT WHERE APPLICABLE MUST REMAIN WITHIN DIMENSIONS  |  | MATERIAL NO.         |            | DOCUMENT NO. |              | SHEET NO.                      |  |  |  |
|   |                               |   |  | SEE CHART            |            | SD-39510-001 |              | 2 OF 2                         |  |  |  |
|   |                               | THIS DRAWING CONTAINS INFORMATION THAT IS PROPRIETARY TO MOLEX INCORPORATED AND SHOULD NOT BE USED WITHOUT WRITTEN PERMISSION |  |                      |            |              |              |                                |  |  |  |